

Printed-circuit board connector - IPC 16/ 4-ST-10.16 - 1969399

Please be informed that the data shown in this PDF Document is generated from our Online Catalog. Please find the complete data in the user's documentation. Our General Terms of Use for Downloads are valid (<http://download.phoenixcontact.com>)



Plug component, Nominal current: 76 A, Rated voltage (III/2): 1000 V, Number of positions: 4, Pitch: 10.16 mm, Connection method: Screw connection, Color: green, Contact surface: Silver

The figure shows a 5-pos. version of the product

Why buy this product

- Can be plugged into PC 16 plugs or inverted IPC 16 headers
- Unlimited 600 V UL approval
- Inverted IPC 16 plugs with pin contacts for touch-proof device outputs (with IPC 16 G) or free-hanging cable/cable connections



Key commercial data

| | |
|------------------------|---|
| Packing unit | 1 |
| Minimum order quantity | 1 |
| Catalog page | Page 464 (CC-2011) |
| GTIN |  4 017918 943646 |
| Custom tariff number | 85366990 |
| Country of origin | POLAND |

Technical data

Dimensions / positions

| | |
|------------------------|----------|
| Pitch | 10.16 mm |
| Dimension a | 30.48 mm |
| Number of positions | 4 |
| Screw thread | M4 |
| Tightening torque, min | 1.7 Nm |
| Tightening torque max | 1.8 Nm |

Technical data

| | |
|-----------------------------|---------------|
| Range of articles | IPC 16/...-ST |
| Insulating material group | I |
| Rated surge voltage (III/3) | 8 kV |
| Rated surge voltage (III/2) | 8 kV |

Printed-circuit board connector - IPC 16/ 4-ST-10.16 - 1969399

Technical data

Technical data

| | |
|---|--------------------|
| Rated surge voltage (II/2) | 6 kV |
| Rated voltage (III/2) | 1000 V |
| Rated voltage (II/2) | 1000 V |
| Connection in acc. with standard | EN-VDE |
| Nominal current I _N | 76 A |
| Nominal voltage U _N | 1000 V |
| Nominal cross section | 16 mm ² |
| Maximum load current | 76 A |
| Insulating material | PA |
| Inflammability class according to UL 94 | V0 |
| Internal cylindrical gage | A6 |
| Stripping length | 14 mm |
| Nominal voltage, UL/CUL Use Group B | 600 V |
| Nominal current, UL/CUL Use Group B | 55 A |
| Nominal voltage, UL/CUL Use Group C | 600 V |
| Nominal current, UL/CUL Use Group C | 55 A |

Connection data

| | |
|---|--|
| Conductor cross section solid min. | 0.75 mm ² |
| Conductor cross section solid max. | 16 mm ² |
| Conductor cross section stranded min. | 0.75 mm ² |
| Conductor cross section stranded max. | 16 mm ² |
| Conductor cross section stranded, with ferrule without plastic sleeve min. | 0.5 mm ² |
| Conductor cross section stranded, with ferrule without plastic sleeve max. | 16 mm ² Only in connection with CRIMPFOX 16 S |
| Conductor cross section stranded, with ferrule with plastic sleeve min. | 0.5 mm ² |
| Conductor cross section stranded, with ferrule with plastic sleeve max. | 16 mm ² Only in connection with CRIMPFOX 16 S |
| Conductor cross section AWG/kcmil min. | 18 |
| Conductor cross section AWG/kcmil max | 6 |
| 2 conductors with same cross section, solid min. | 0.75 mm ² |
| 2 conductors with same cross section, solid max. | 6 mm ² |
| 2 conductors with same cross section, stranded min. | 0.75 mm ² |
| 2 conductors with same cross section, stranded max. | 6 mm ² |
| 2 conductors with same cross section, stranded, ferrules without plastic sleeve, min. | 0.5 mm ² |
| 2 conductors with same cross section, stranded, ferrules without plastic sleeve, max. | 4 mm ² |
| 2 conductors with same cross section, stranded, TWIN ferrules with plastic sleeve, min. | 0.5 mm ² |
| 2 conductors with same cross section, stranded, TWIN ferrules with plastic sleeve, max. | 6 mm ² |
| Minimum AWG according to UL/CUL | 20 |

Printed-circuit board connector - IPC 16/ 4-ST-10.16 - 1969399

Technical data

Connection data

| | |
|---------------------------------|---|
| Maximum AWG according to UL/CUL | 6 |
|---------------------------------|---|

Classifications

eclass

| | |
|------------|----------|
| eCl@ss 4.0 | 272607xx |
| eCl@ss 4.1 | 27260701 |
| eCl@ss 5.0 | 27260701 |
| eCl@ss 5.1 | 27260701 |
| eCl@ss 6.0 | 27260704 |
| eCl@ss 7.0 | 27440402 |

etim

| | |
|----------|----------|
| ETIM 3.0 | EC001121 |
| ETIM 4.0 | EC002638 |
| ETIM 5.0 | EC002638 |

unspsc

| | |
|---------------|----------|
| UNSPSC 6.01 | 30211810 |
| UNSPSC 7.0901 | 39121409 |
| UNSPSC 11 | 39121409 |
| UNSPSC 12.01 | 39121409 |
| UNSPSC 13.2 | 39121409 |

Approvals

Approvals

Approvals

UL Recognized / cUL Recognized / cULus Recognized

Ex Approvals

Approvals submitted

Approval details

Printed-circuit board connector - IPC 16/ 4-ST-10.16 - 1969399

Approvals

UL Recognized

| | B | C |
|--------------------------------|-------|-------|
| mm ² /AWG/kcmil | 20-6 | 20-6 |
| Nominal current I _N | 55 A | 55 A |
| Nominal voltage U _N | 600 V | 600 V |

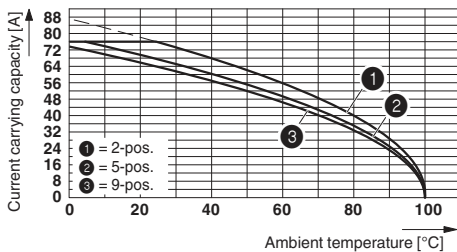
cUL Recognized

| | B | C |
|--------------------------------|-------|-------|
| mm ² /AWG/kcmil | 20-6 | 20-6 |
| Nominal current I _N | 55 A | 55 A |
| Nominal voltage U _N | 600 V | 600 V |

cULus Recognized

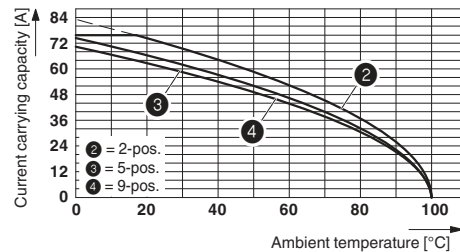
Drawings

Diagram



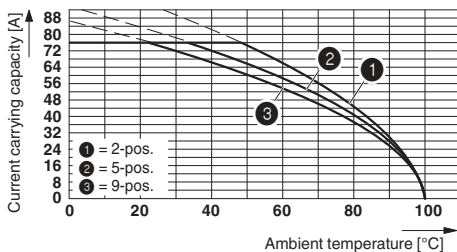
Derating curve for: IPC 16/...-ST-10,16 with DFK-IPC 16/...-G-10,16

Diagram



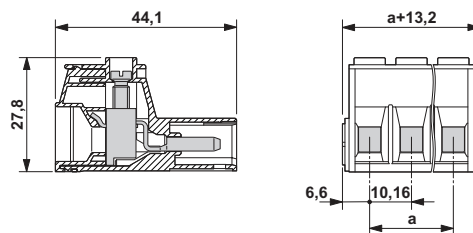
Derating curve for: IPC 16/...-ST-10,16 with IPC 16/...-G-10,16

Diagram



Derating curve for: PC 16/...-ST-10,16 with IPC 16/...-ST-10,16

Dimensioned drawing



The illustration shows the 3-pos. version

