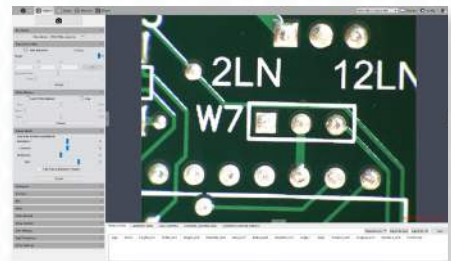




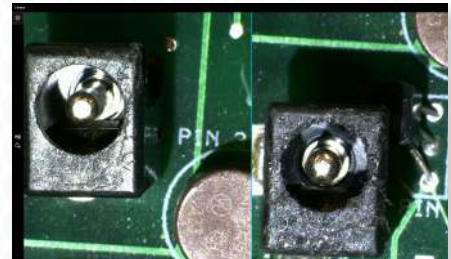
Mighty Cam ES	Macro Lens	Heavy Duty Post Stand	LED Ring Light
HDMI/USB Camera designed for quick & accurate inspection	3x - 70x Magnification	Accommodates a large variety of parts	Provides uniformity & shadow free illumination



Excellent Color Reproduction



USB Mode- Advanced Imaging/ Measurement Software Included



HDMI Mode: Image/Video Capture, On-Screen Tools (No PC required)

Mighty Cam ES

[3x-43x] w/ Macro Lens & Post Stand

High Definition 1080p inspection system with a 22" monitor offering superb image quality. **Provides a magnification range of 3x to 43x with excellent field of view at a 20mm-300mm working distance.** You can operate this system with or without a PC. Without a PC, the camera connects directly to the included HDMI monitor. View and record images using the included on screen tools. Images & videos can be saved to the included SD card. Connect the camera to a PC to utilize more advanced features in the included software.

Features

- 3x-43x Magnification
- Camera features HDMI and USB outputs for use with an HD monitor or PC
- Save high resolution image/video files to the included SD Card - no PC required
- Advanced imaging/measurement software included for PC mode
- LED ring light with 96 ultra-bright, adjustable LEDs

Mighty Cam ES		
<i>3x-43x w/ Macro Lens & Post Stand</i>		
Item #	26700-108-ES	
Magnification	3x-43x	
Working Distance	20mm - 300mm	
Interface	USB 2.0 & HDMI	
Resolution	2MP 2592 (H) x 1944 (V)	
Frame Rate	USB 2.0 @ 15FPS	HDMI @ 15FPS
Software	USB 2.0 Mosaic V2	HDMI Cloud 1.0 ver
Package Contents	<ul style="list-style-type: none"> • Mighty Cam ES (26100-259) • Macro Lens (26700-182) • Standard Post Stand (26800B-571) • N-Type Focus Mount (26800B-578) • 22" LCD HD Monitor (26700-406) • LED Ring Light (26200B-216) 	