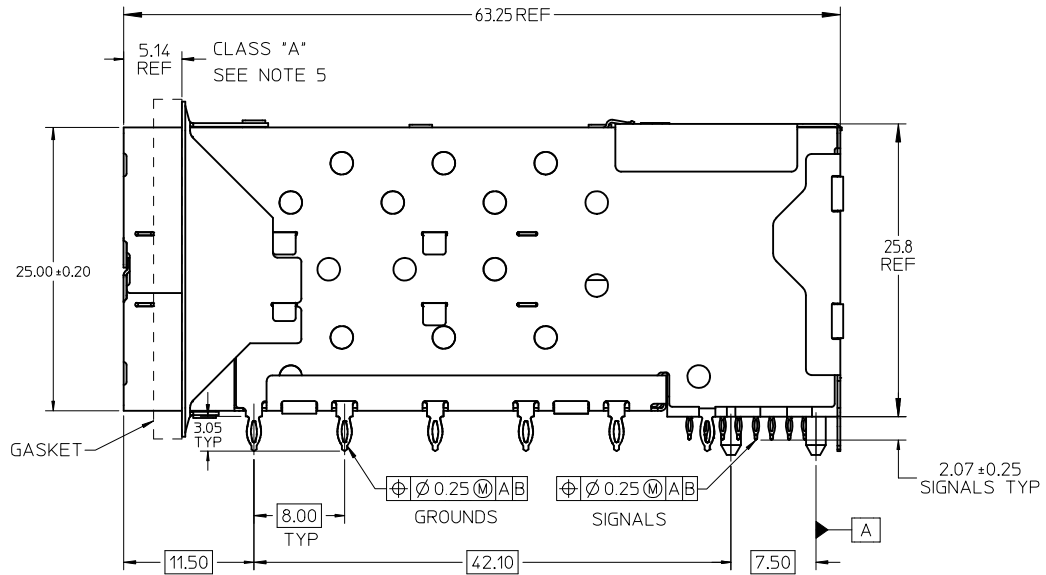


MATERIAL NO.	TAIL PLATING
761040001	MATTE TIN / LEAD
761045001	MATTE TIN

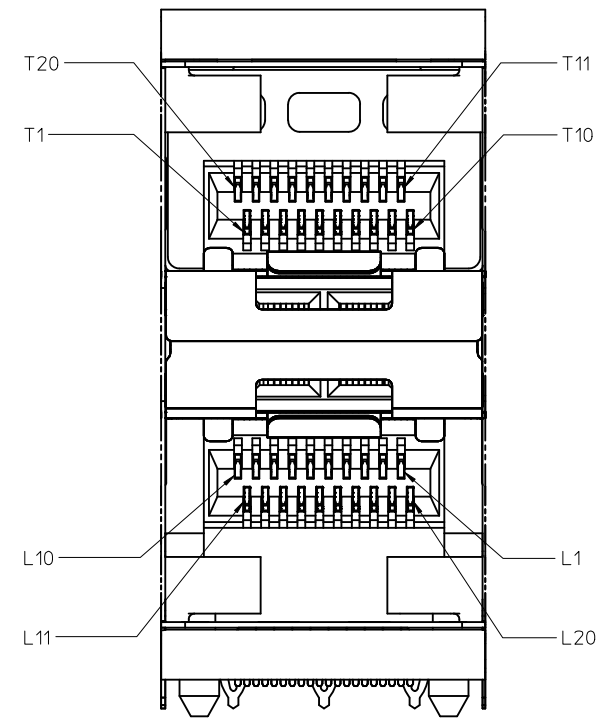
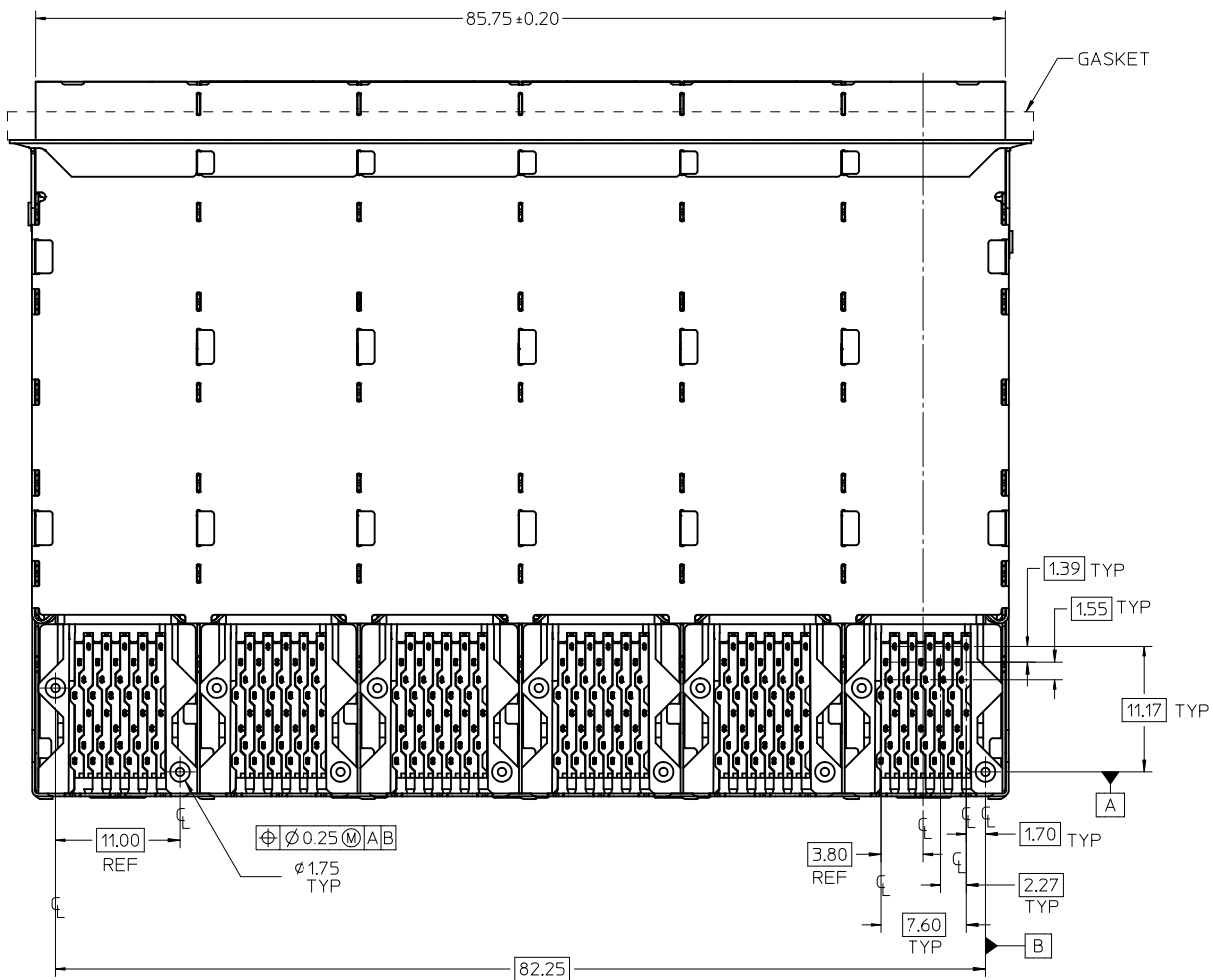
DATE CODE LOCATION  
SEE NOTE 7  
6X

- NOTES:
- MATERIAL:
    - CAGE: NICKEL SILVER, THICKNESS: 0.25mm
    - CONNECTOR HOUSING: GLASS FILLED LIQUID CRYSTAL POLYMER (LCP), UL 94V-0, COLOR: BLACK
    - OVERMOLD TERMINAL HOUSING: GLASS FILLED LIQUID CRYSTAL POLYMER (LCP), UL 94V-0, COLOR: BLACK
    - TERMINALS: TIN BRASS
    - EMI GASKET: CONDUCTIVE ELASTOMER
  - FINISHES:
    - TERMINALS: CONTACT AREA: 0.76 MICROMETERS MINIMUM HARD GOLD OVER 1.27 MICROMETERS MINIMUM NICKEL.
    - COMPLIANT TAIL - MATTE TIN/LEAD OPTION: 0.76 TO 1.52 MICROMETERS 90/10 MATTE TIN-LEAD OVER 0.76 MICROMETERS MINIMUM NICKEL.
    - COMPLIANT TAIL - MATTE TIN OPTION: 0.76 TO 1.52 MICROMETERS MATTE TIN OVER 0.76 MICROMETERS MINIMUM NICKEL.
  - REFER TO PS-75310-001 PRODUCT SPEC FOR ALL ELECTRICAL, MECHANICAL AND ENVIRONMENTAL SPECIFICATIONS.
  - REFER TO PK-75451-001 FOR ALL PACKAGING SPECIFICATIONS.
  - ALL EXTERIOR SURFACES TO BE CLASS 'B' SURFACE EXCEPT THE UNDER SIDE OF THE CAGE WHERE THE PCB WOULD BE LOCATED AND AS NOTED. THE SURFACES TO CONFORM TO THE MOLEX COSMETIC DOC PS-45499-002.
  - REFER TO AS-76090-001 FOR HIGH SPEED ROUTING RECOMMENDATIONS.
  - DATE CODE LOCATION IS SHOWN ABOVE.
    - DATE CODE FORMAT: DDDY MX A1
    - DDD = DAY OF THE YEAR
    - Y = YEAR
    - MX = MOLEX
    - A = ALPHA CHARACTER - INDICATES MANUFACTURING LINE
    - 1 = NUMERIC CHARACTER - INDICATES PRODUCTION SHIFT



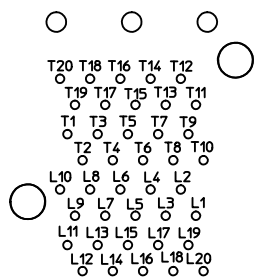
<b>ADD NOTE 6 &amp; 7</b> EC NO: UCP2011-2594 DRW: MWOLFE 2011/03/08 CHK: DBARKER 2011/03/08 APPR: SWILLER 2011/09/20	QUALITY SYMBOLS ▽=0 ▽=0 ▽=0	GENERAL TOLERANCES (UNLESS SPECIFIED)		DIMENSION STYLE <b>MM ONLY</b>		SCALE <b>3:1</b>	DESIGN UNITS <b>METRIC</b>	THIRD ANGLE PROJECTION			
		4 PLACES ± --- ± ---	3 PLACES ± --- ± ---	2 PLACES ± 0.13 ± ---	1 PLACE ± 0.25 ± ---	DRAWN BY JLONG	DATE 01-18-2007	TITLE <b>STACKED SFP+ 2X6 ASS'Y WITH ELASTOMERIC GASKET</b>			
		ANGULAR ± 5 °				CHECKED BY MSANDBERG	DATE 01-18-2007	MOLEX INCORPORATED			
		DRAFT WHERE APPLICABLE MUST REMAIN WITHIN DIMENSIONS				APPROVED BY RNELSON	DATE 01-18-2007	DOCUMENT NO. <b>SD-76104-001</b>	SHEET NO. <b>1 OF 4</b>		

THIS DRAWING CONTAINS INFORMATION THAT IS PROPRIETARY TO MOLEX INCORPORATED AND SHOULD NOT BE USED WITHOUT WRITTEN PERMISSION

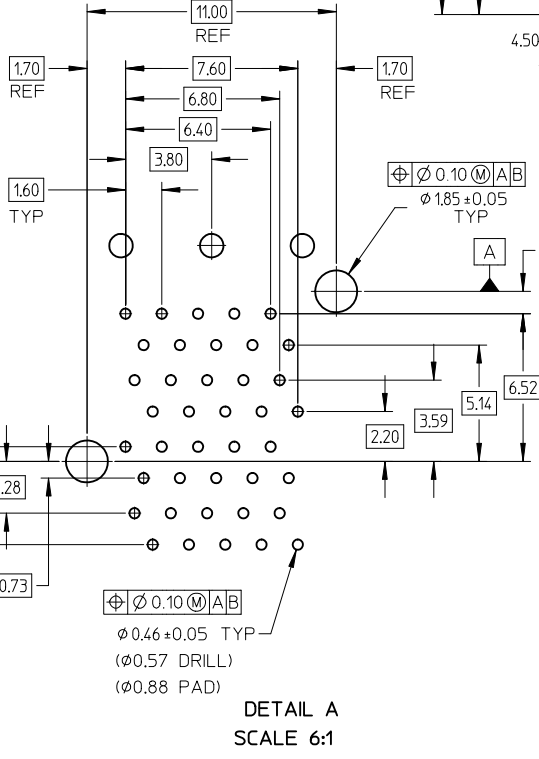
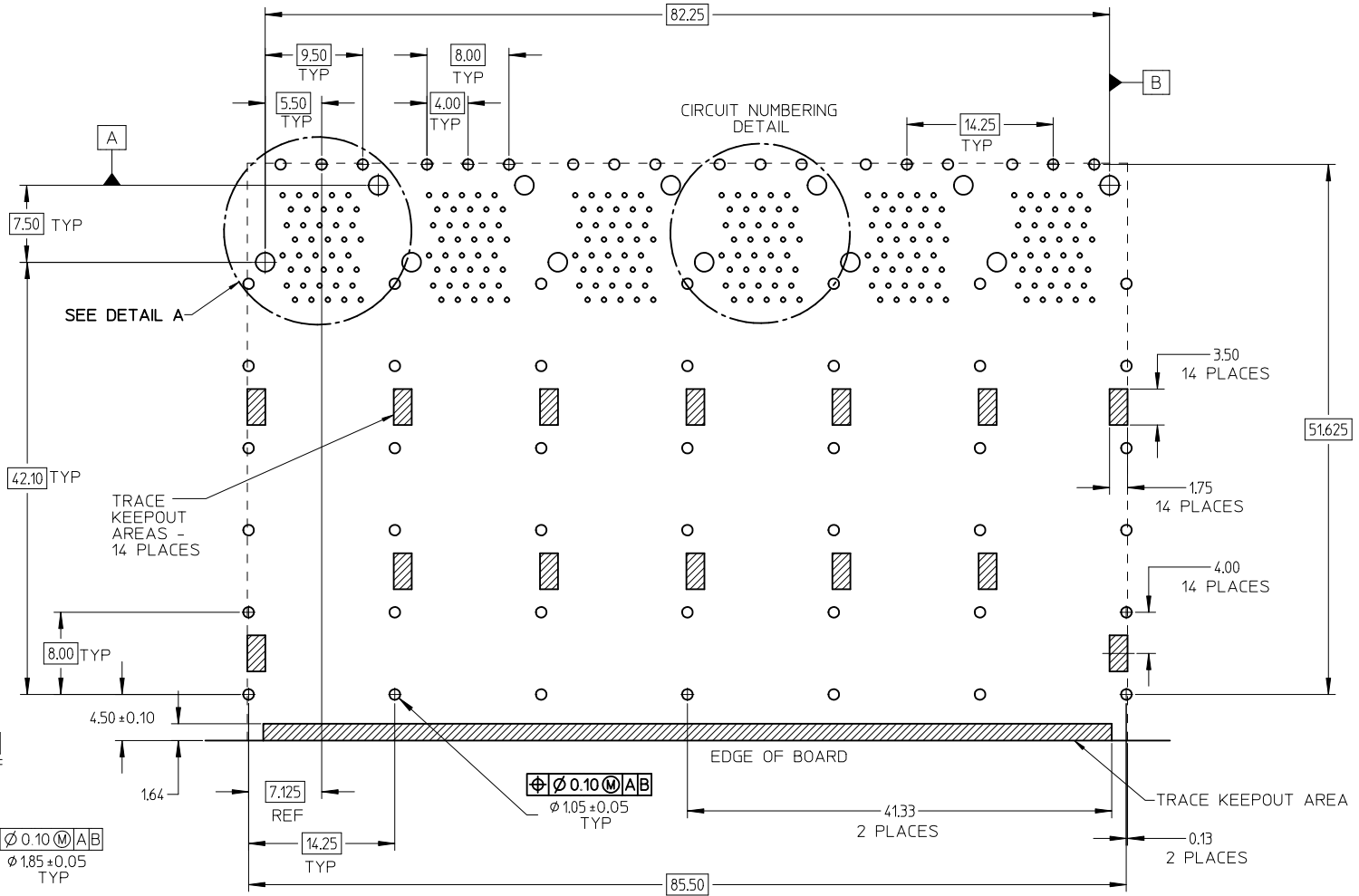


DETAIL B  
SCALE 6:1  
CIRCUIT NUMBERING

<b>ADD DETAIL B</b> EC NO: UCP2011-2594 DRWN:WOLFE 2011/03/08 CHKD:BBARKER 2011/03/08 APPR:SMILLER 2011/09/20	QUALITY SYMBOLS ▽=0 ▽=0 ▽=0	GENERAL TOLERANCES (UNLESS SPECIFIED)		DIMENSION STYLE <b>MM ONLY</b>	SCALE <b>3:1</b>	DESIGN UNITS <b>METRIC</b>	THIRD ANGLE PROJECTION		
		4 PLACES ± --- ± --- 3 PLACES ± --- ± --- 2 PLACES ± 0.13 ± --- 1 PLACE ± 0.25 ± ---	mm    INCH ± ---    ± --- ± ---    ± --- ± 0.13    ± --- ± 0.25    ± ---	DRAWN BY JLONG	DATE 01-18-2007	<b>STACKED SFP+ 2X6 ASS'Y WITH ELASTOMERIC GASKET</b>			
		ANGULAR ± 5 °		CHECKED BY MSANDBERG	DATE 01-18-2007	<b>MOLEX INCORPORATED</b>			
		DRAFT WHERE APPLICABLE MUST REMAIN WITHIN DIMENSIONS		APPROVED BY RNELSON	DATE 01-18-2007	MATERIAL NO. <b>SEE TABLE</b>	DOCUMENT NO. <b>SD-76104-001</b>	SHEET NO. <b>2 OF 4</b>	



CIRCUIT NUMBERING DETAIL  
COMPONENT SIDE OF BOARD  
SCALE 5:1

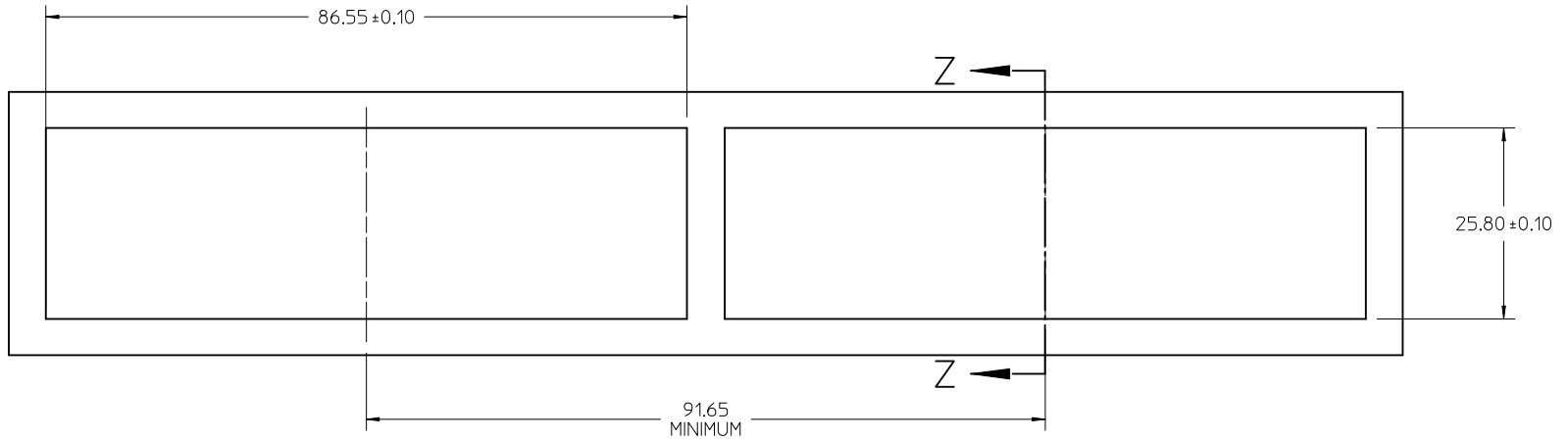


DETAIL A  
SCALE 6:1

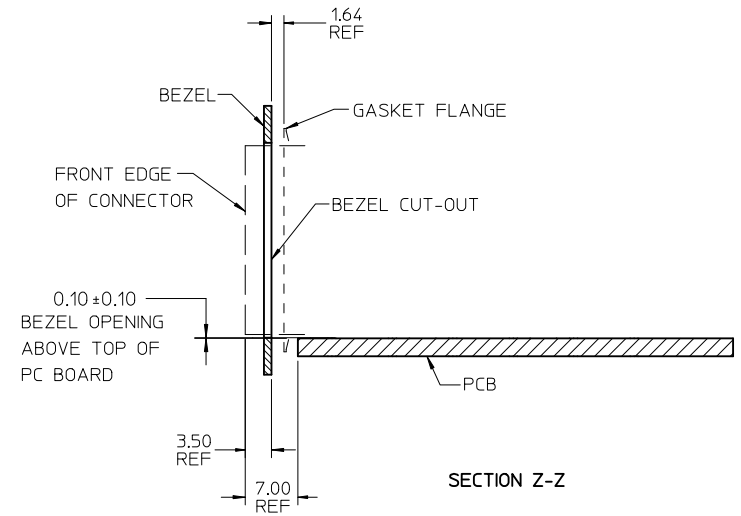
RECOMMENDED PCB LAYOUT - COMPONENT SIDE  
RECOMMENDED PCB THICKNESS - 2.36 MM (.093 INCH)

THE ENTIRE AREA OF CONNECTOR FOOTPRINT  
TO BE CONSIDERED THE KEEP OUT AREA FOR COMPONENTS  
THIS AREA IS INDICATED BY THE DASHED LINE

CHG EC NO: UCP2011-2594 2011/03/08 DRWN:WOLFE CHKD:BBARKER APPR:SMILLER 2011/03/08 2011/09/20	DESCRIPTION REV 1	QUALITY SYMBOLS	GENERAL TOLERANCES (UNLESS SPECIFIED)	DIMENSION STYLE MM ONLY	SCALE 3:1	DESIGN UNITS METRIC	THIRD ANGLE PROJECTION
		▽=0	4 PLACES ± --- ± ---	DRAWN BY JLONG	DATE 01-18-2007	TITLED <b>STACKED SFP+ 2X6 ASS'Y WITH ELASTOMERIC GASKET</b>	
		▽=0	3 PLACES ± --- ± ---	CHECKED BY MSANDBERG	DATE 01-18-2007		
		▽=0	2 PLACES ± 0.13 ± ---	APPROVED BY RNELSON	DATE 01-18-2007		
▽=0	1 PLACE ± 0.25 ± ---	MATERIAL NO. <b>SEE TABLE</b>		DOCUMENT NO. SD-76104-001			
DRAFT WHERE APPLICABLE MUST REMAIN WITHIN DIMENSIONS			ANGULAR ± 5 °		MOLEX INCORPORATED		SHEET NO. 3 OF 4
THIS DRAWING CONTAINS INFORMATION THAT IS PROPRIETARY TO MOLEX INCORPORATED AND SHOULD NOT BE USED WITHOUT WRITTEN PERMISSION							



BEZEL CUT-OUT DETAIL  
BEZEL THICKNESS: 0.8 - 2.6



ADD SECOND BEZEL CUTOUT IEC NO: UCP2011-2594 DRWN:WOLFE 2011/03/08 CHKD:BBARKER 2011/03/08 APPR:SMILLER 2011/09/20	QUALITY SYMBOLS	GENERAL TOLERANCES (UNLESS SPECIFIED)		DIMENSION STYLE MM ONLY		SCALE 2:1	DESIGN UNITS METRIC	THIRD ANGLE PROJECTION	
	▽=0	4 PLACES	± ---	± ---	DRAWN BY	DATE	STACKED SFP+ 2X6 ASS'Y WITH ELASTOMERIC GASKET		
	▽=0	3 PLACES	± ---	± ---	JLONG	01-18-2007			
	▽=0	2 PLACES	± 0.13	± ---	CHECKED BY	DATE	MOLEX INCORPORATED SD-76104-001		
▽=0	1 PLACE	± 0.25	± ---	MSANDBERG	01-18-2007				
		ANGULAR ± 5 °		APPROVED BY	DATE	DOCUMENT NO.		SHEET NO.	
		DRAFT WHERE APPLICABLE MUST REMAIN WITHIN DIMENSIONS		RNELSON	01-18-2007	SEE TABLE		4 OF 4	
				MATERIAL NO.		THIS DRAWING CONTAINS INFORMATION THAT IS PROPRIETARY TO MOLEX INCORPORATED AND SHOULD NOT BE USED WITHOUT WRITTEN PERMISSION			
				SIZE					