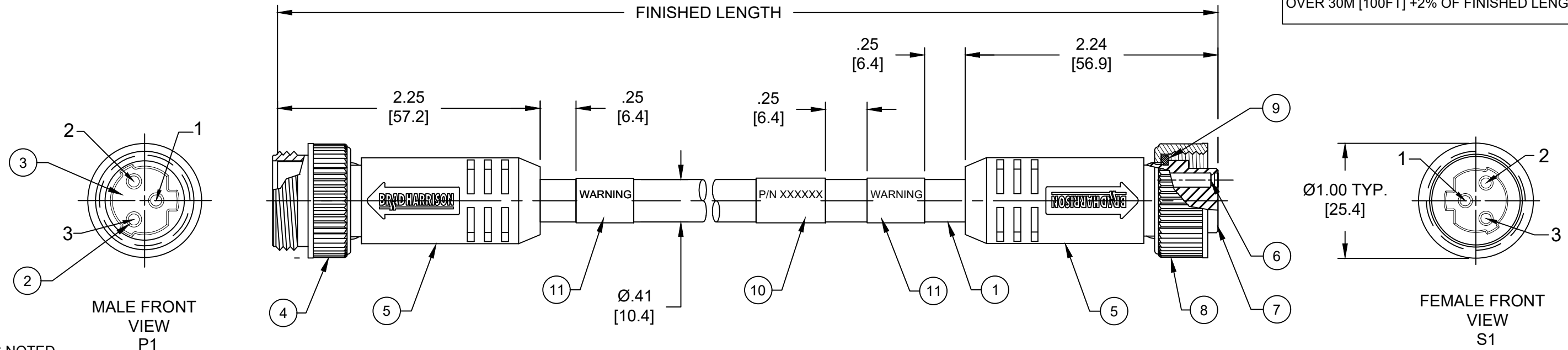


| PART NO | ENGINEERING NO. | FINISHED LENGTH |
|------------|-----------------|------------------|
| 1300102117 | 113130K13M005 | 0.5M [1FT 7 IN] |
| 1300102099 | 113130K13M300 | 30M [98FT 5 IN] |
| 1300102225 | 113130K13M750 | 75M [246FT 1 IN] |

| CABLE LENGTH TOLERANCES | |
|--------------------------|-------------------------|
| <.3M [1FT]: | +19mm-0 [+ .75in-0] |
| .3 - .9M [1 - 3FT]: | +44.5mm-0 [+1.75in-0] |
| .9 - 1.8M [3 - 6FT]: | +55.6mm-0 [+2.19in-0] |
| 1.8 - 3.7M [6 - 12FT]: | +88.9mm-0 [+3.50in-0] |
| 3.7 - 7.3M [12 - 24FT]: | +165.1mm-0 [+6.50in-0] |
| 7.3-14.6M [24 - 48FT]: | +317.5mm-0 [+12.50in-0] |
| 14.6 - 30.5M [48-100FT]: | +622.3mm-0 [+24.50in-0] |
| OVER 30M [100FT]: | +2% OF FINISHED LENGTH |



- NOTES:
- MATERIAL: AS NOTED
 - FINISH: AS NOTED
 - ELECTRICAL:
VOLTAGE: 500V PER IEC60664
600V PER UL2237
CURRENT: 13A
 - TEMP RATING: -20°TO +90°C
 - PROTECTION: IP67 (WHEN MATED)
 - COUPLING THREAD: 7/8-16UN
 - UL LISTED FILE: E258922
 - ALL DIMENSIONS ARE FOR REFERENCE UNLESS TOLERANCED OR NOTED OTHERWISE

PART NO. LEGEND

113130K13M010

FINISHED LENGTH
M005 = 0.5 METER
M010 = 1 METER
M100 = 10 METER

WIRING DIAGRAM

| P1 | S1 |
|----|----|
| 1 | 1 |
| 2 | 2 |
| 3 | 3 |

| ITEM | DESCRIPTION | MATERIAL | FINISH |
|------|----------------------|---------------|--------------|
| 11 | WARNING LABEL | VINYL | BLACK/ORANGE |
| 10 | WRAP LABEL | VINYL | BLACK/YELLOW |
| 9 | FRICTION RING | NYLON | WHITE |
| 8 | FEMALE COUPLING NUT | ZINC DIE-CAST | BLACK E-COAT |
| 7 | 3P FEMALE INSERT | TPE | BLACK |
| 6 | CONTACT SOCKET | COPPER ALLOY | GOLD PLATED |
| 5 | OVER MOLD | TPE | BLACK |
| 4 | MALE COUPLING NUT | ZINC DIE-CAST | BLACK E-COAT |
| 3 | 3P MALE INSERT | TPE | BLACK |
| 2 | CONTACT PIN | COPPER ALLOY | GOLD PLATED |
| 1 | CABLE 16/3 (HI FLEX) | TPE JACKET | YELLOW |

CABLE FLEX CHARACTERISTICS:

| | |
|----------------------|------------------------------------|
| TORSIONAL FLEX TEST | 20 MILLION CYCLES PER MIL-C-13777G |
| BEND FLEX TEST | 20 MILLION CYCLES PER MIL-C-13777G |
| WELD SLAG RESISTANCE | WOODHEAD STANDARD S-300 |

| | | | |
|--|--|---|----------------------------|
| FUNCTIONAL SYMBOLS F/A=0 F/C=0 F/P=0 | DRAWING CONTAINS INFORMATION THAT IS PROPRIETARY TO MOLEX ELECTRONIC TECHNOLOGIES, LLC AND SHOULD NOT BE USED WITHOUT WRITTEN PERMISSION | | |
| | DIMENSION UNITS: INCH/MM | | |
| DIVISIONAL SYMBOLS | GENERAL TOLERANCES (UNLESS SPECIFIED) | CURRENT REV DESC: ITEM 9 DESCRIPTION O-RING CHANGED TO FRICTION RING, UPDATE BORDER | |
| | 4 PLACES ±--- ±--- | mm | INCH |
| DRAWING | 3 PLACES ±--- ±--- | EC NO: 706622 | 2022/05/11 |
| | 2 PLACES ±--- ±--- | DRWN: RSTONE | 2022/05/13 |
| | 1 PLACE ±--- ±--- | CHK'D: ALEON01 | 2022/05/17 |
| | 0 PLACES ±--- ±--- | APPR: BWOODMAN | 2022/05/17 |
| DRAFT WHERE APPLICABLE MUST REMAIN WITHIN DIMENSIONS | ANGULAR TOL ± --- ° | INITIAL REVISION: | DOCUMENT NUMBER |
| | THIRD ANGLE PROJECTION | DRWN: RSTONE | SD-130010-037 |
| DRAWING | B-SIZE | APPR: BWOODMAN | DOC TYPE DOC PART REVISION |
| | SERIES: 130010 | 2017/02/09 | PSD 001 D1 |
| SHEET NUMBER | GENERAL MARKET | 2017/03/02 | 1 OF 1 |
| | 1 OF 1 | | |