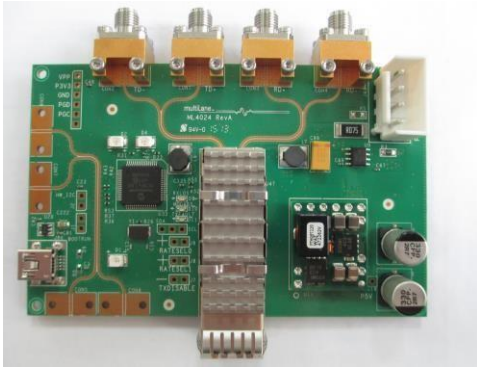


SFP28 MCB

ML4024

SFP28 Host module
28G Interconnects



Key Features

- DUT voltage supply control (3.15V, 3.3V, 3.45V)
- DUT Current Sense
- Superior Signal Integrity Performance Rogers 3003 based PCBs
- Low Insertion Loss
- Temperature Monitor
- Four corner test capability
- Supports 28G interfaces
- I2C master driven from both on board micro controller or external pin headers
- USB interface
- User friendly GUI for I2C R/W commands and loading custom MSA Memory Maps
- TX and RX channels comes with matching trace length
- On-board LEDs showing MSA output Alarms states
- On-board buttons/jumpers for MSA input control signals
- 2.92mm 40GHz edge launch k connectors
- OSP plating

Ordering information ML4024

Superior Integrity and Performance

Summary

SFP28 Host (Small Form Factor 28) MSA Compliant Master Host board **ML4024**, is designed to provide an efficient and easy method of programming and testing 28G SFP28 transceivers.

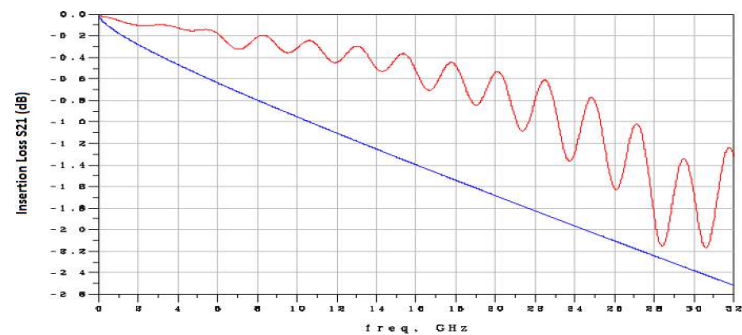
The **ML4024** comes complete with Window's based software and user manual to enable intuitive memory map programming and testing, controlled via mini B USB.

The SFP28 host is designed to simulate an ideal environment for SFP28 transceivers module and cable testing, characterization and manufacturing tests. Its properties make the host board as electrically transparent as possible, allowing for a more accurate assessment of the module's performance.

Software Capabilities

SFP28 Module Status/Control
MSA Compliancy

Compliant with CEI-28G-VSR MCB characteristics



Blue: MCB reference SDD21
Red: ML4024 SDD21

Applications

- 28G Electrical module testing and characterization
- High-speed data interface between an ASIC (SerDes) and the SFP28 module

North America

48521 Warm Springs Blvd. Suite 310
Fremont, CA 94539
USA
+1 510 573 6388

Worldwide

Houmal Technology Park
Askarieh Main Road
Houmal, Lebanon
+961 5 941 668

Asia

14F-5/ Rm.5, 14F., No 295
Sec.2, Guangfu Rd. East Dist.,
Hsinchu City 300, Taiwan (R.O.C)
+886 3 5744 591