

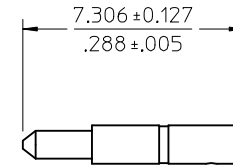
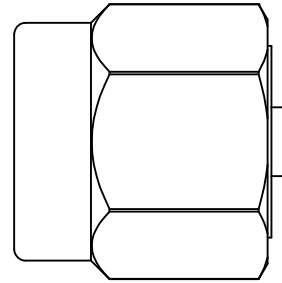
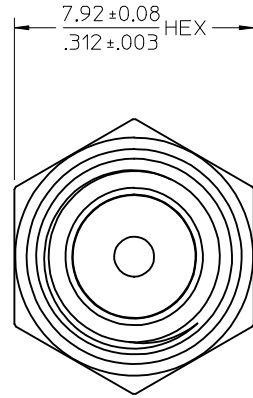
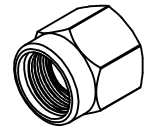
MATERIALS AND FINISHES

BODY, COUPLING NUT: STAINLESS STEEL
PLATED GOLD OVER NICKEL

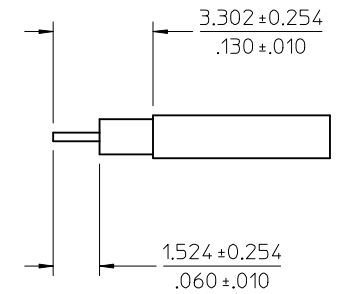
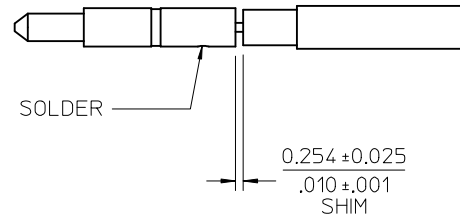
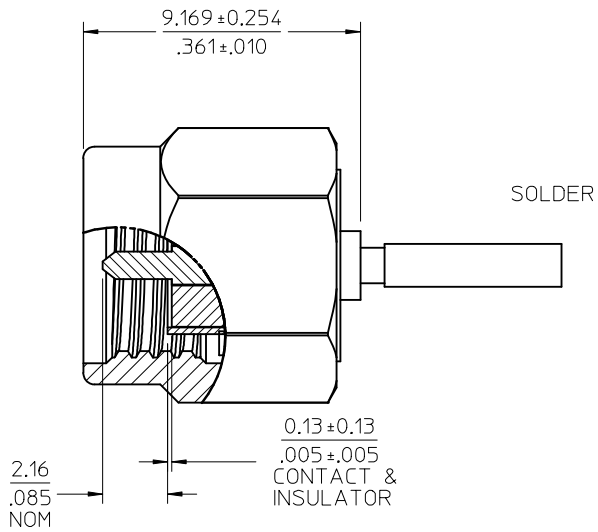
CENTER CONTACT: BRASS
PLATED GOLD OVER NICKEL

INSULATOR: TEFLON

GASKET: SILCONE RUBBER



CONTACT



PART # 73251-3830

MIL-STD-348A, FIG. 310.1		INTERFACE	
SPECIFICATION		DESCRIPTION	
DIMENSION STYLE MM/IN		SCALE	DESIGN UNITS METRIC
DRAWN BY AZR		DATE 2009/06/17	TITLE SMA PLUG STRAIGHT FOR 047 CABLE 50 OHMS SMA-PC
CHECKED BY SSS		DATE 2009/06/17	MOLEX INCORPORATED
APPROVED BY JDW		DATE 2009/06/17	
MATERIAL NO. 732513830		DOCUMENT NO. SD-73251-383	SHEET NO. 1 OF 1
THIS DRAWING CONTAINS INFORMATION THAT IS PROPRIETARY TO MOLEX INCORPORATED AND SHOULD NOT BE USED WITHOUT WRITTEN PERMISSION			

CHG: RELEASE
DRAWING.

EC NO: URF2009-0751
DRWIN:ROBERTSON 2009/06/18
CHKD:SSS 2009/06/18
APPR:WIENER 2009/06/18

QUALITY SYMBOLS
 = 0
 = 0

GENERAL TOLERANCES (UNLESS SPECIFIED)

	mm	INCH
4 PLACES	± .005	± .0004
3 PLACES	± .003	± .0002
2 PLACES	± .002	± .0001
1 PLACE	± .001	± .00005

ANGULAR ± 2 °

DRAFT WHERE APPLICABLE
MUST REMAIN
WITHIN DIMENSIONS

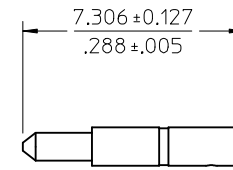
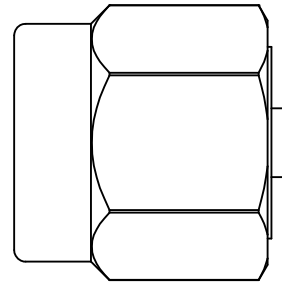
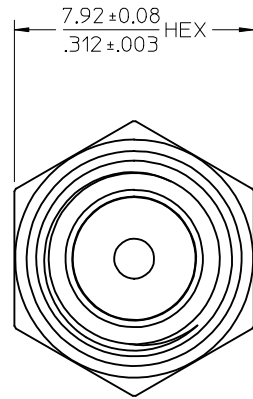
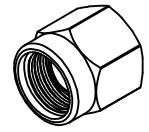
MATERIALS AND FINISHES

BODY, COUPLING NUT: STAINLESS STEEL
PLATED GOLD OVER NICKEL

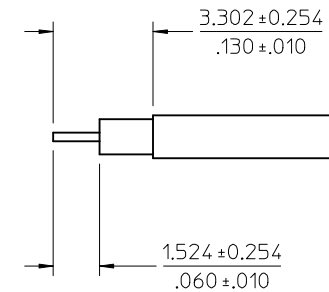
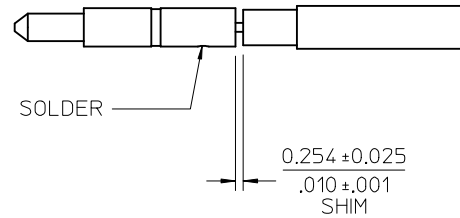
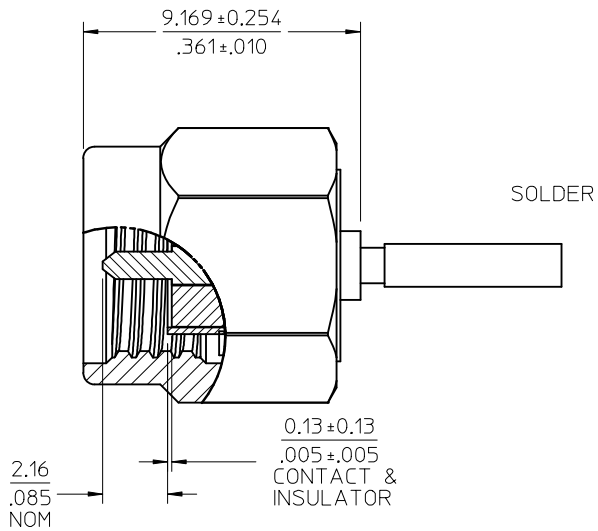
CENTER CONTACT: BRASS
PLATED GOLD OVER NICKEL

INSULATOR: TEFLON

GASKET: SILCONE RUBBER



CONTACT



PART # 73251-3830

MIL-STD-348A, FIG. 310.1		INTERFACE	
SPECIFICATION		DESCRIPTION	
DIMENSION STYLE MM/IN		SCALE	DESIGN UNITS METRIC
DRAWN BY AZR		TITLE SMA PLUG STRAIGHT FOR 047 CABLE 50 OHMS SMA-PC	
CHECKED BY SSS		APPROVED BY JDW	
DATE 2009/06/17		DATE 2009/06/17	
MATERIAL NO. 732513830		DOCUMENT NO. SD-73251-383	
SHEET NO. 1 OF 1		MATERIAL NO. 732513830	
THIS DRAWING CONTAINS INFORMATION THAT IS PROPRIETARY TO MOLEX INCORPORATED AND SHOULD NOT BE USED WITHOUT WRITTEN PERMISSION			

CHG: RELEASE
DRAWING.

EC NO: URF2009-0751
DRWIN:ROBERTSON 2009/06/18
CHKD:SSS 2009/06/18
APPR:WIENER 2009/06/18

QUALITY SYMBOLS
▽=0
▽=0

GENERAL TOLERANCES (UNLESS SPECIFIED)
4 PLACES ± .005
3 PLACES ± .005
2 PLACES ± .005
1 PLACE ± .005
ANGULAR ± 2°
DRAFT WHERE APPLICABLE
MUST REMAIN
WITHIN DIMENSIONS

DRAWN BY
AZR
CHECKED BY
SSS
APPROVED BY
JDW
DATE
2009/06/17

MOLEX MOLEX INCORPORATED
SD-73251-383