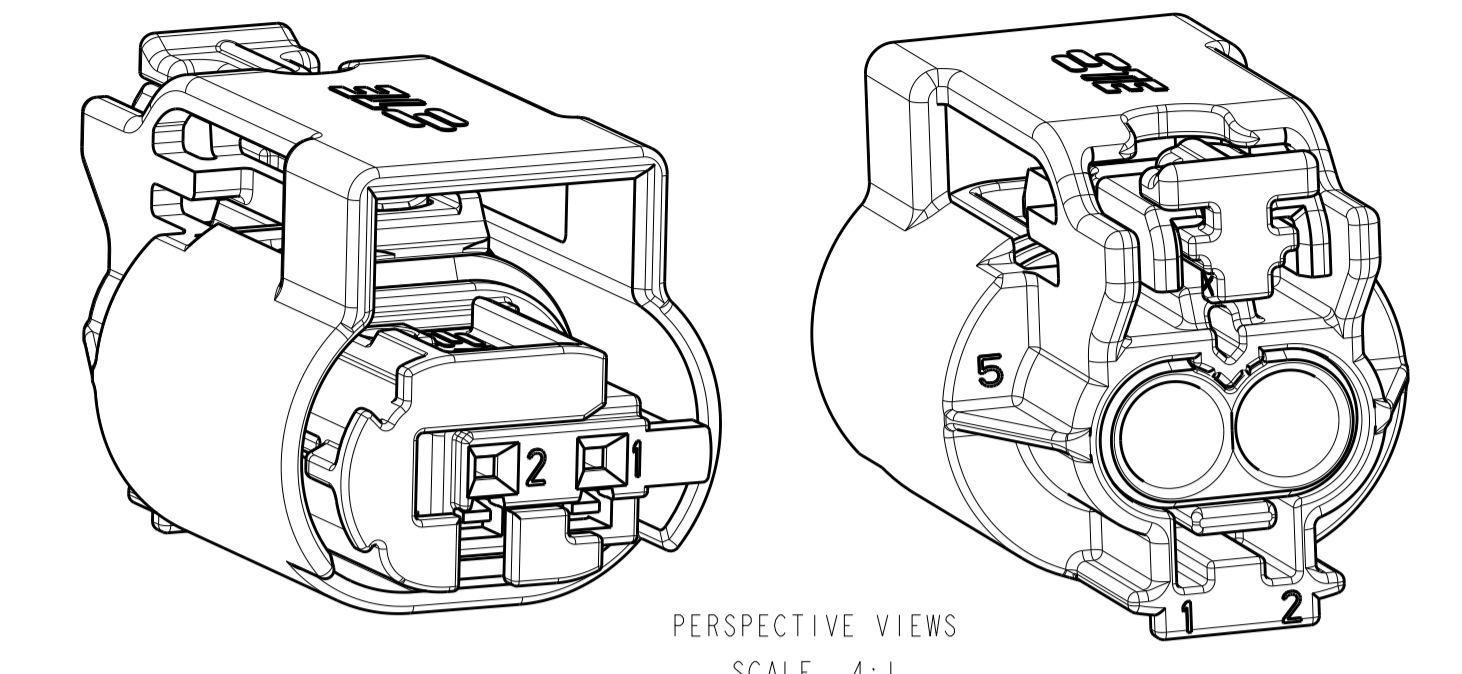
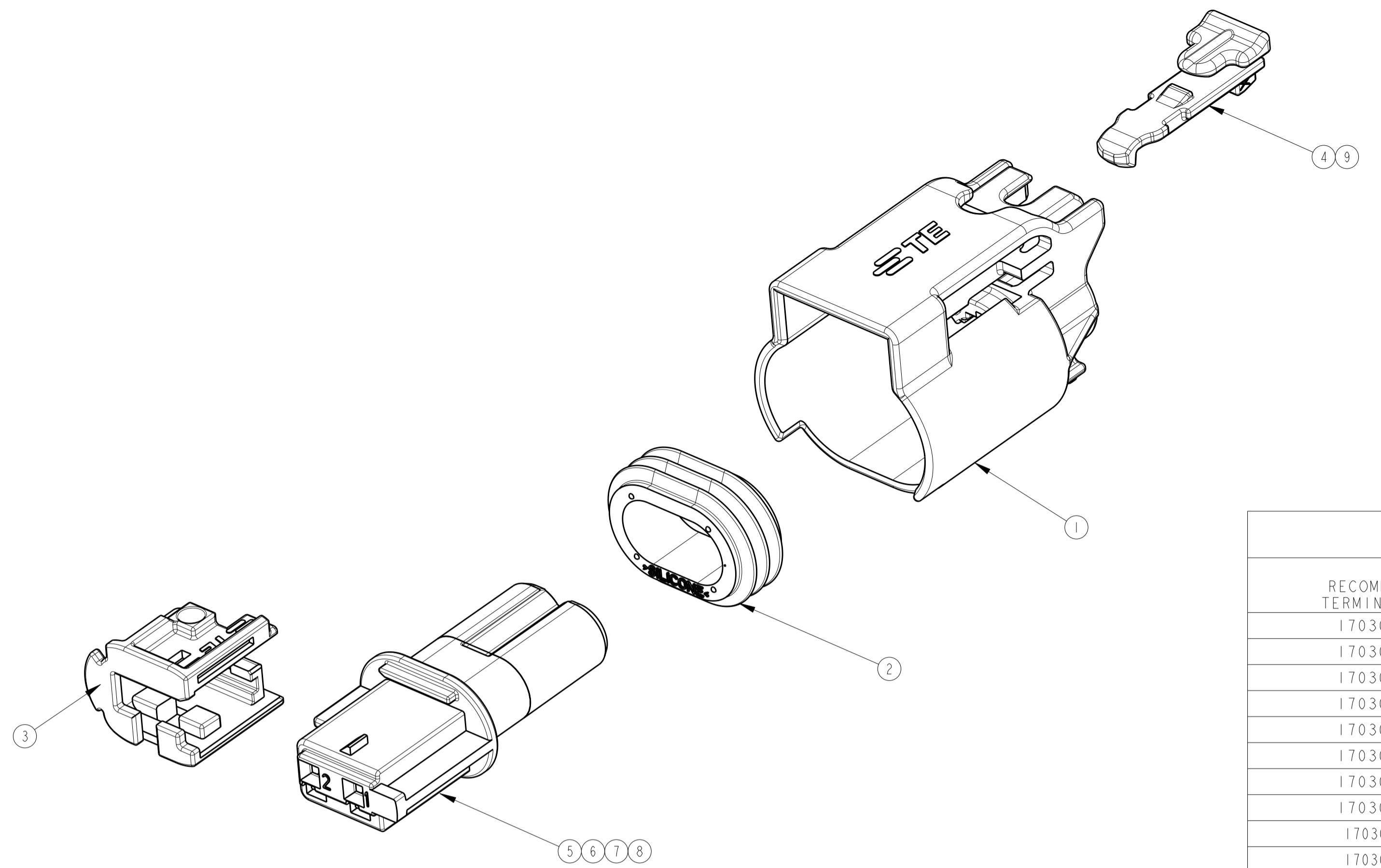
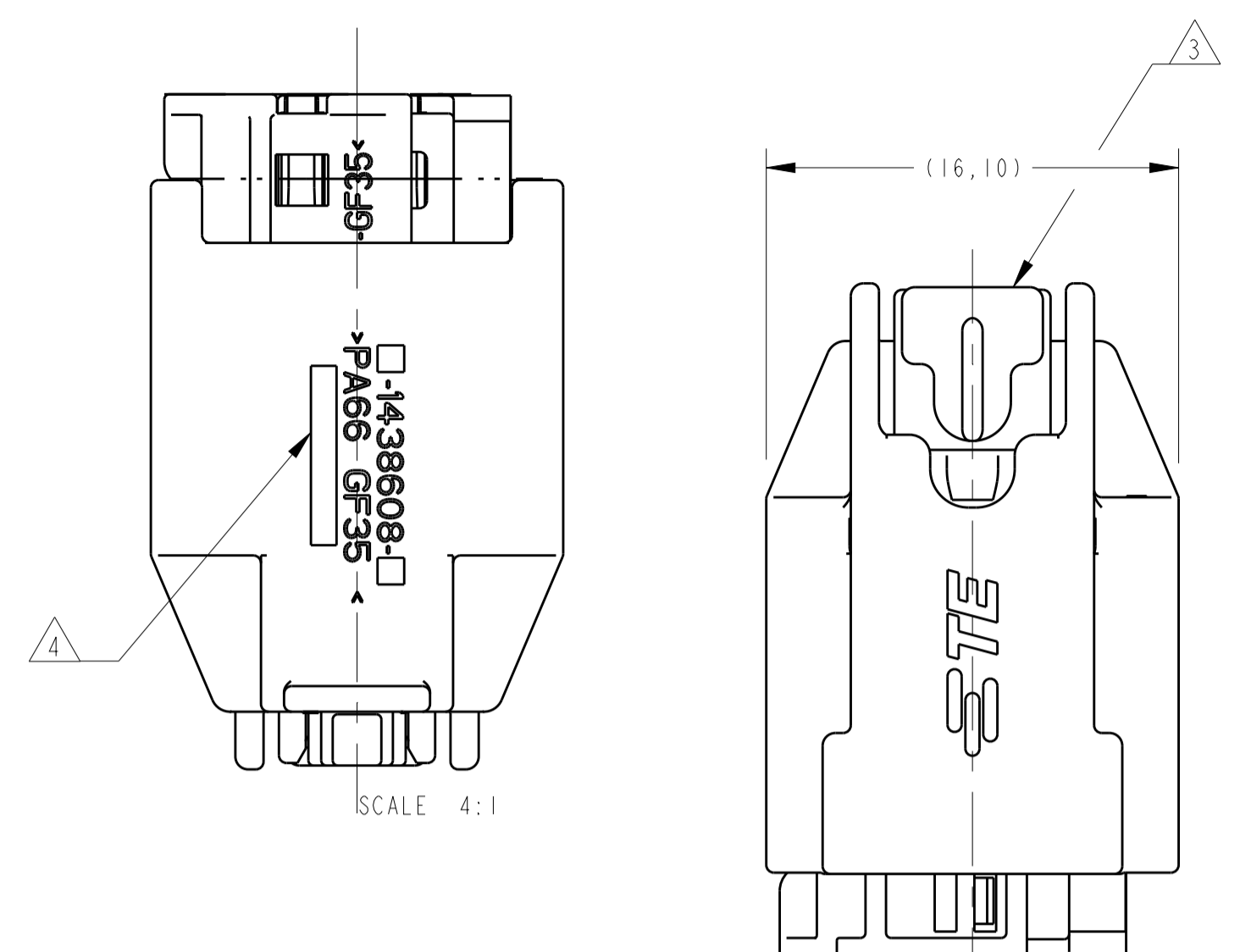


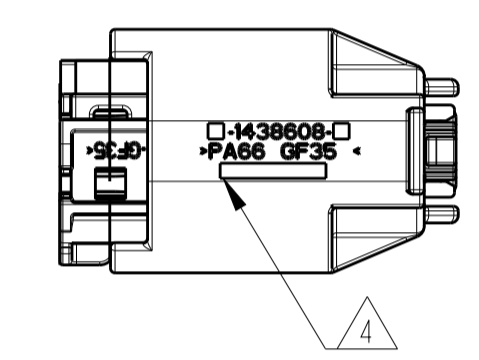
LOC		DIST		REVISIONS			
IN		00		REV	DATE	BY	APPV
G				REVISÉ DRAWING	ECO-14-011432	29JUL2014	NCL LWP
G1				REVISÉ BY	ECO-18-012392	18MAR2019	LAA DAO

creo
 Creo Parametric 2.0
DO NOT REVISE
EXCEPT BY CAD



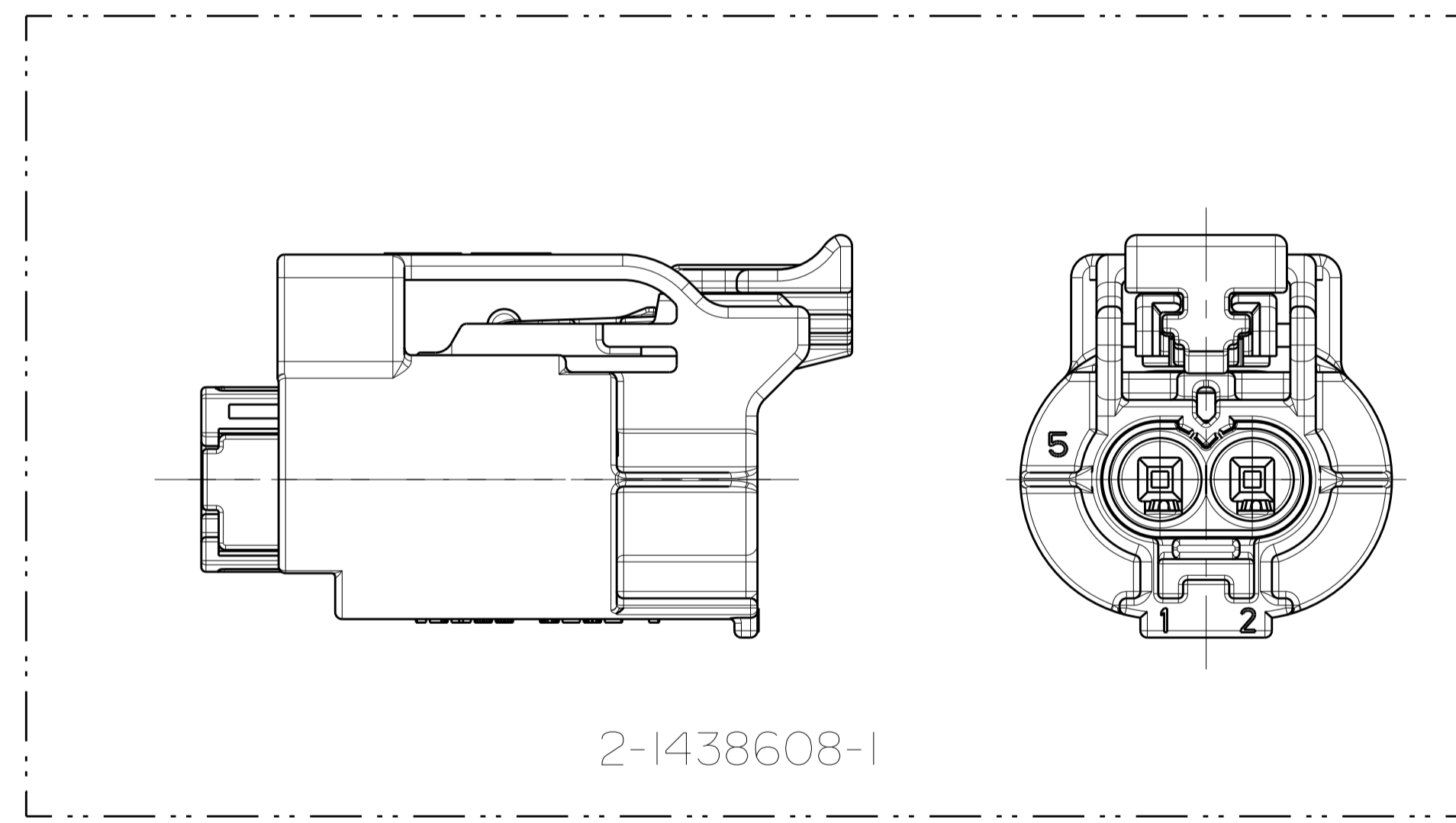
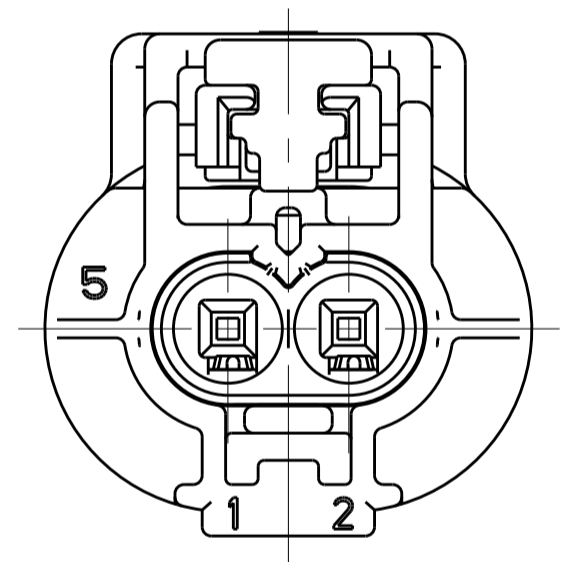
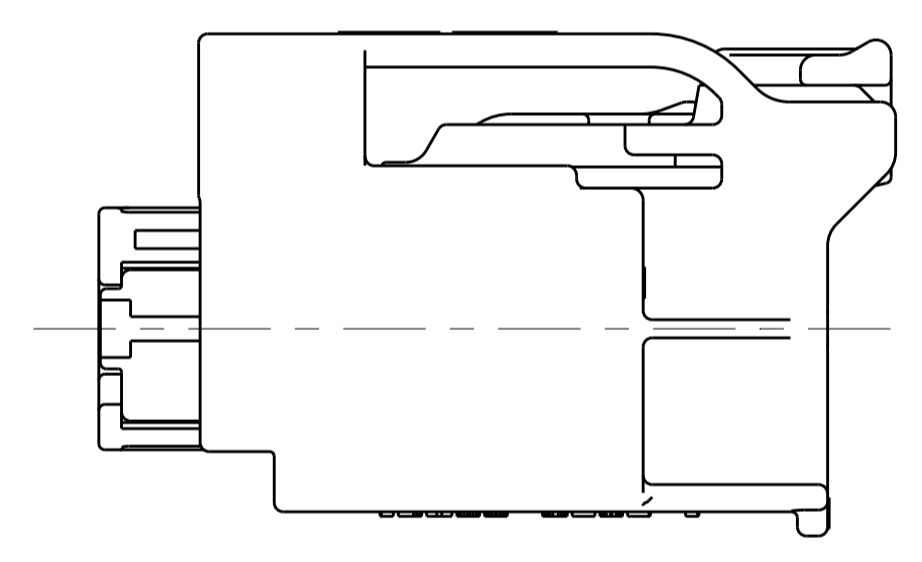
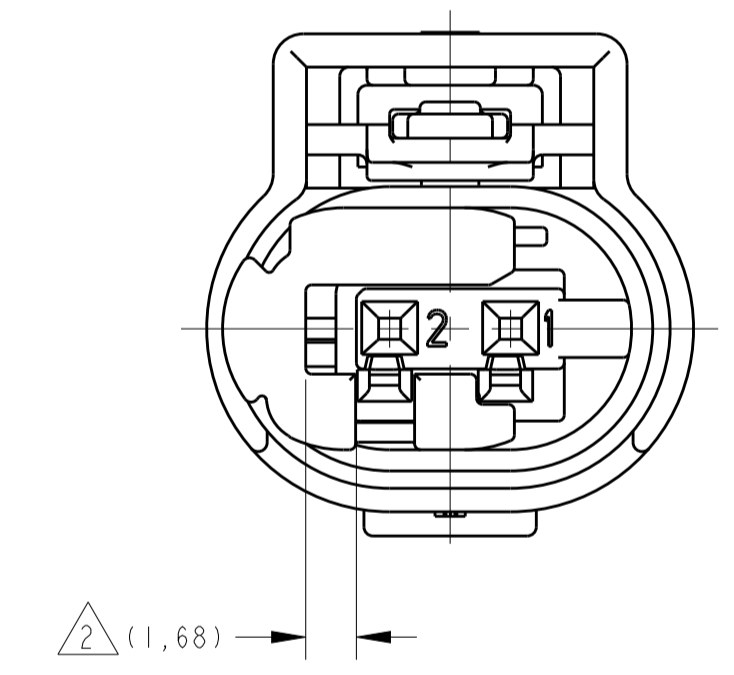
RECOMMENDED TERMINAL AND WIRE SEAL CHART

RECOMMENDED TERMINAL P/N	PLATING	WIRE SIZE TYPE	RECOMMENDED WIRE SEAL (CORRESPONDING TO WIRE SIZE AND TYPE)
1703032-5	GOLD	20AWG TXL	967067-1
1703032-1	TIN	20AWG TXL	967067-1
1703032-5	GOLD	18AWG TXL	967067-1
1703032-1	TIN	18AWG TXL	967067-1
1703032-5	GOLD	20AWG GXL	967067-1
1703032-1	TIN	20AWG GXL	967067-1
1703032-5	GOLD	0.75mm ² FRL	967067-1
1703032-1	TIN	0.75mm ² FRL	967067-1
1703032-5	GOLD	0.50mm ² FRL	967067-1
1703032-1	TIN	0.50mm ² FRL	967067-1
2288140-1	TIN	0.35mm ² FRL	967067-2
2288140-1	TIN	0.22mm ² FRL	967067-2



MARK OF TE-BR ASSY LINE NUMBER

1
2



- 1- 1438608-5 MOSTRADO.
1- 1438608-5 SHOWN.
- 2- TPA MOSTRADO EM POSIÇÃO DE PRÉ-TRAVA.
2- TPA SHOWN IN PRE-LATCHED POSITION.
- 3- CPA MOSTRADO EM POSIÇÃO DE PRÉ-TRAVA.
3- CPA SHOWN IN PRE-LATCHED POSITION.
- 4- GRAVACAO JULIANA DE DATA COM QUATRO DIGITOS (DDDD), PN ASSEMBLY, IDENTIFICACAO DO MATERIAL, E PARA TE-BR, IDENTIFICACAO DA LINHA DE MONTAGEM CONFORME TABELA ABAIXO, LOCALIZADA NESTA AREA.
4- MARK FOUR DIGIT JULIAN DATE CODE (DDDD), ASSEMBLY PART NUMBER, MATERIAL IDENTIFICATION, AND FOR TE-BR, THE ASSY LINE ID AS BELOW TABLE, LOCATED IN APPROXIMATE AREA SHOWN.
- 5- TERMINAIS, CABOS E SELOS VENDIDOS SEPARADAMENTE. (VER TABELA DE PN'S PARA TERMINAIS, CABOS, SELOS, ACABAMENTO E BITOLA RECOMENDADOS).
5- TERMINALS AND WIRE SEALS SOLD SEPARATELY. (SEE RECOMMENDED TERMINAL AND WIRE SEAL TABLE FOR P/N'S, PLATING, AND WIRE SIZE).
- 6- VER ESPECIFICACAO DE APLICACAO N. 114-18025.
6- SEE APPLICATION SPEC. NO. 114-18025.
- 7- VERSAO NEUTRA.
7- NEUTRAL VERSION.
- 8- ALIVIO DE MATERIAL (VER FOLHA 2 DE 2).
8- MATERIAL RECESS (SEE SHEET 2 OF 2).

- 9- COR OPCIONAL DO SELO - NATURAL.
9- OPTIONAL SEAL COLORS - NATURAL.
- 10- PRODUTO TESTADO CONFORME NORMA SAE/USCAR-2 REV.4 COM AS SEGUINTE EXCECOES:
11A. FORÇA DE INSERÇÃO DO TPA DA PRÉ MONTAGEM PARA TRAVADO = 12N. MIN.
11B. "CLICK" AUDIVEL = 1db MIN.
11C. FORÇA DE EXTRAÇÃO DO CPA DA POSIÇÃO TRAVADO PARA PRÉ TRAVADO = 7N MIN.
10- PRODUCT TESTED IN ACORDANCE WITH SAE/USCAR-2 REV.4 WITH THE FOLLOWING EXCEPTIONS:
11A. TPA PRESET TO LOCK FORCE = 12N. MIN.
11B. AUDIBLE "CLICK" = 1db MIN.
11C. CPA LOCK TO PRESET FORCE = 7N MIN.
- 11- SUPERFÍCIE DE VEDAÇÃO NESTA ÁREA, NÃO PERMITIDO MARCAS DE CHUPAGEM E DIVISÕES DO MOLDE. RUGOSIDADE DO MOLDE RA=0,8µm; ÂNGULO DE SAÍDA 15° (VER FOLHA 2 DE 2).
11- IN THIS AREA SEALING SURFACE AROUND, NO SINK MARKS AND TOOL PARTING PERMITTED. MOLD SURFACE RA=0,8µm; DRAFTING ANGLE 15° (SEE SHEET 2 OF 2)
- 2- PINOS DE CONTATO CONFORME DESENHO TE 114-18063 (VER FOLHA 2 DE 2)
2- CONTACT PINS ACCORDING TO INTERFACE DRAWING TE 114-18063 (SEE SHEET 2 OF 2)

SUPERSEDED

ITEM	DESCRIPTION	MATERIAL	FINISH
9	CPA	PBT, 30% GLASS FILLED	VIOLET
8	INNER PLUG HOUSING KEYING X	NYLON 6/6, 35% GLASS FILLED	GREEN
7	INNER PLUG HOUSING KEYING C	NYLON 6/6, 35% GLASS FILLED	BLUE
6	INNER PLUG HOUSING KEYING B	NYLON 6/6, 35% GLASS FILLED	DARK GREY
5	INNER PLUG HOUSING KEYING A	NYLON 6/6, 35% GLASS FILLED	BLACK
4	CPA	PBT, 30% GLASS FILLED	RED
3	TPA	NYLON 6/6, 35% GLASS FILLED	RED
2	PERIPHERAL SEAL	SILICONE RUBBER	LIGHT BLUE
1	OUTER PLUG HOUSING	NYLON 6/6, 35% GLASS FILLED	BLACK

THIS DRAWING IS A CONTROLLED DOCUMENT.

DIMENSIONS: mm

TOLERANCES UNLESS OTHERWISE SPECIFIED:

0 PLC	±
1 PLC	±0.5
2 PLC	±0.13
3 PLC	±
4 PLC	±

ANGLES: 40°/30°

MATERIAL: SEE TABLE

FINISH: SEE TABLE

APPROVED: B. BUCHTER 28APR2004

NAME: PLUG ASSEMBLY, 2 POSITION, SEALED, MOS CLEAN BODY CONNECTOR

SIZE: A1

CAGE CODE: 00779

DRAWING NO: 114-37012

WEIGHT: -

CUSTOMER DRAWING

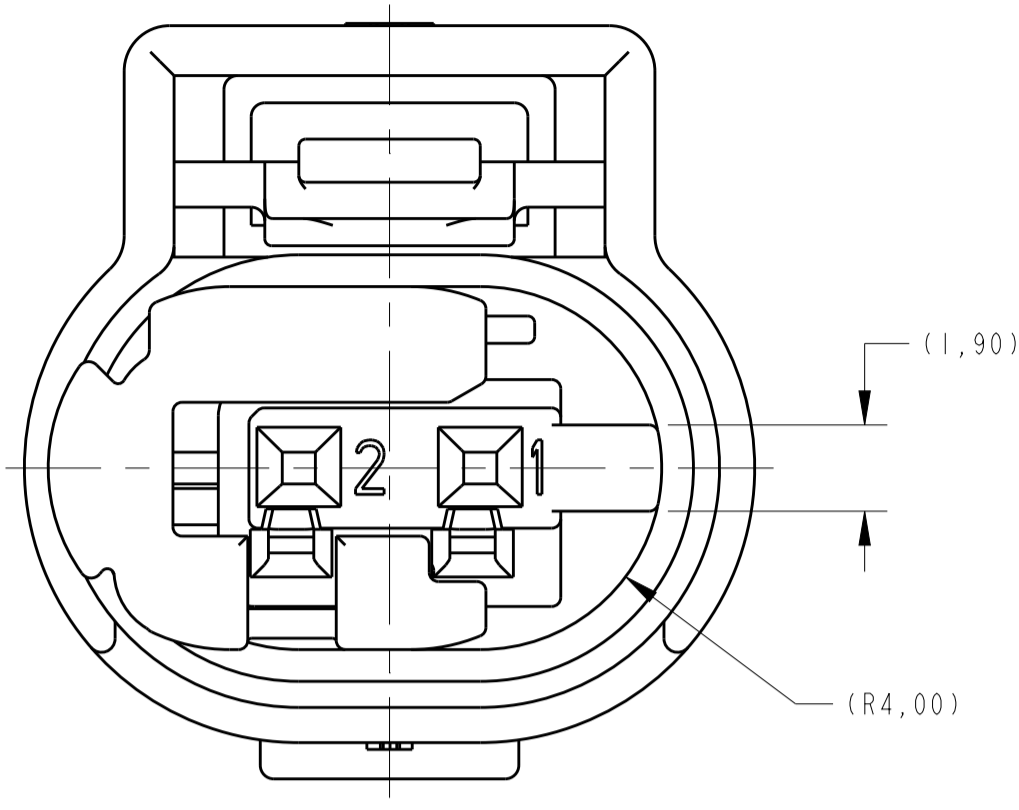
SCALE: 4:1

SHEET: 1 OF 2

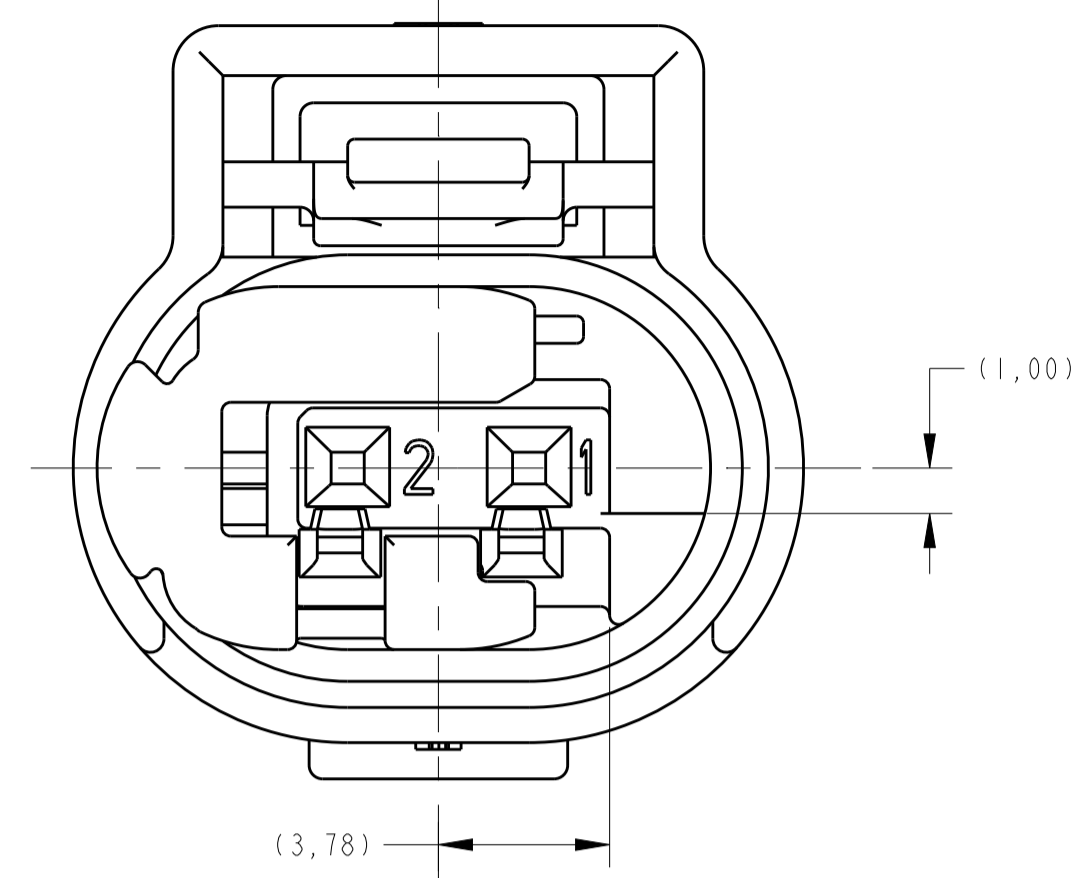
REV: G1

LOC	DIST	REV	DATE	BY	APPV	DESCRIPTION
IN	00					SEE SHEET 1

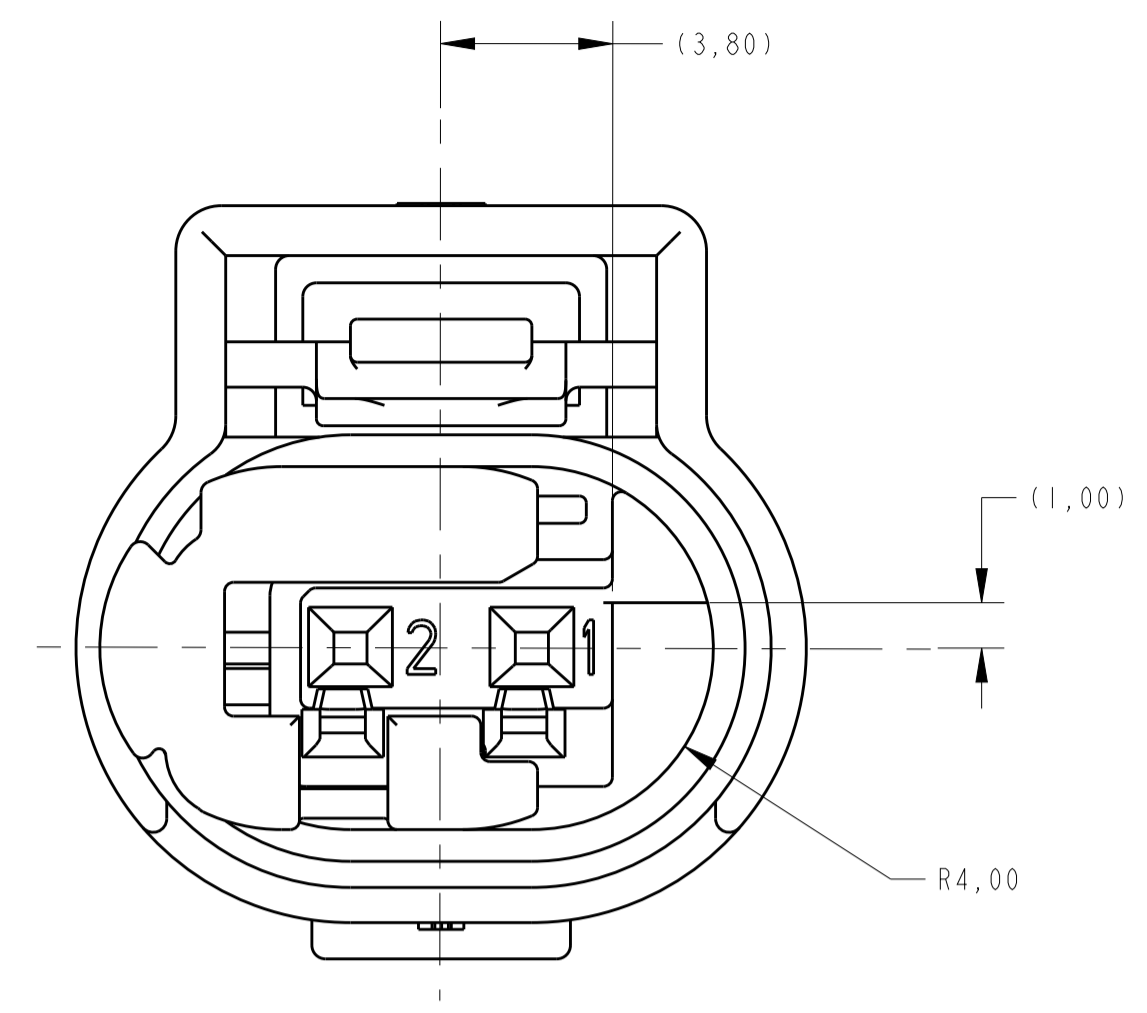
creo
 Creo Parametric 2.0
DO NOT REVISE EXCEPT BY CAD



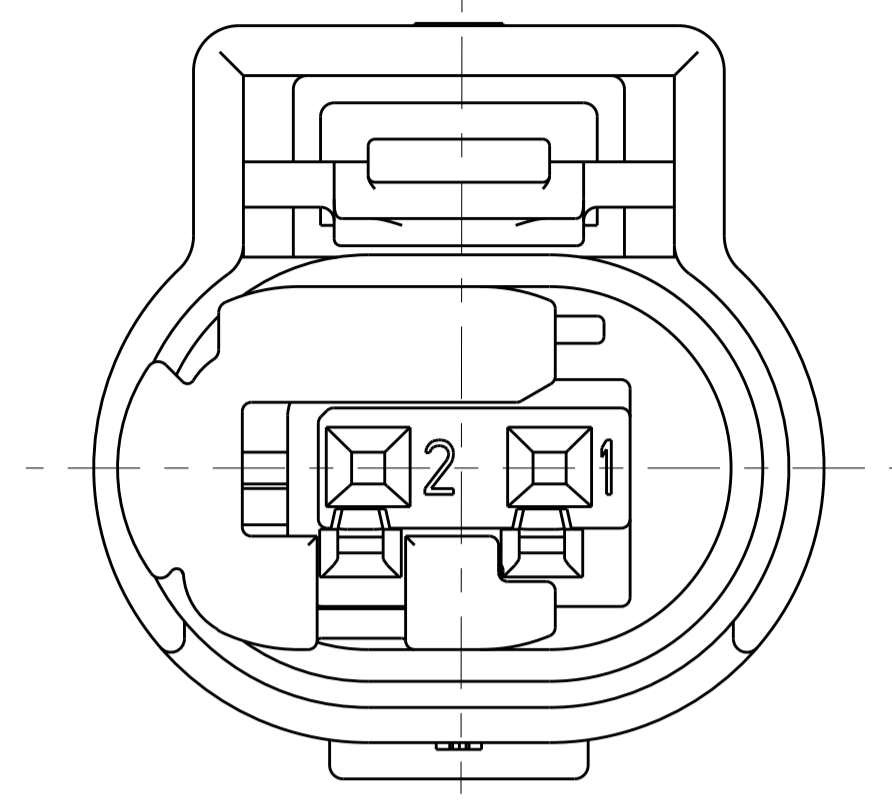
KEY CODE A
 1-1438608-1 AND 1-1438608-5 AND 2-1438608-1 ONLY
 SCALE 6:1



KEY CODE B
 1-1438608-2 AND 1-1438608-6 ONLY
 SCALE 6:1

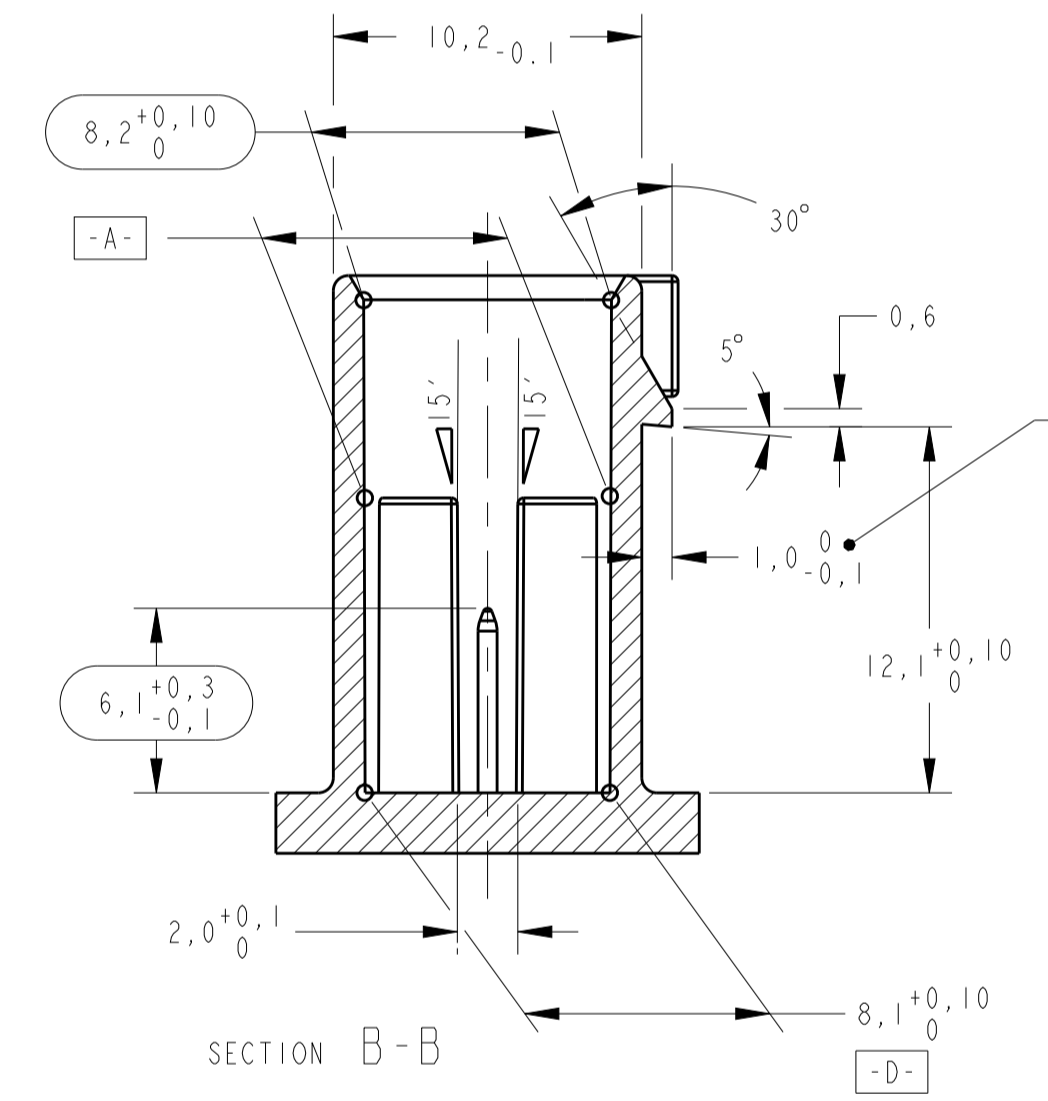
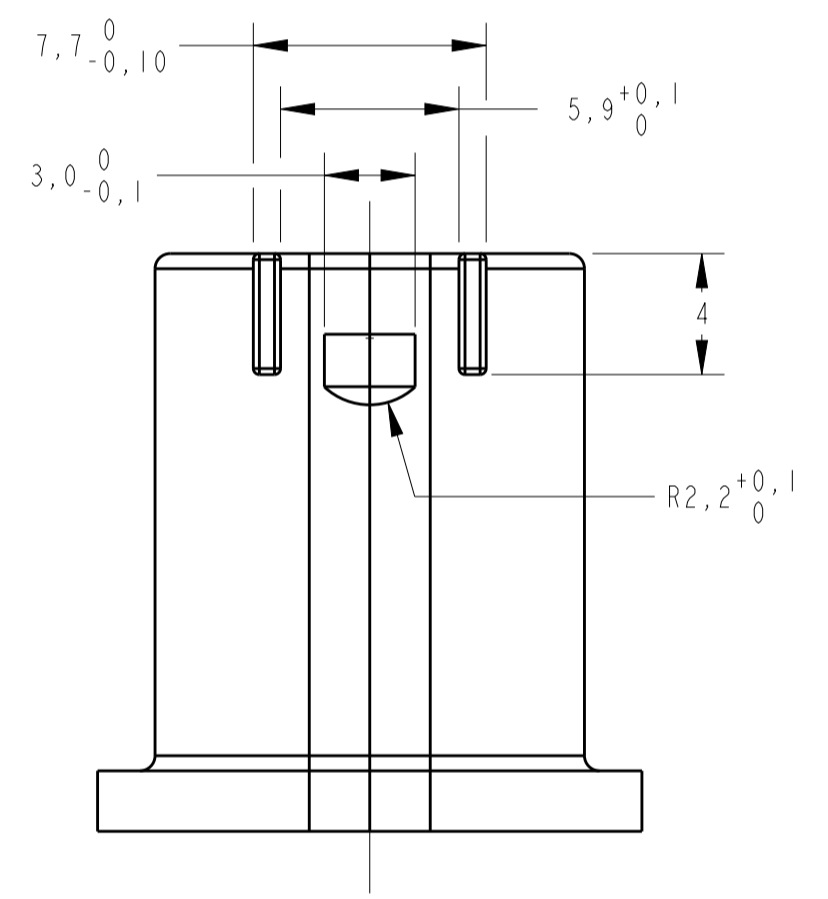


KEY CODE C
 1-1438608-3 AND 1-1438608-7 ONLY
 SCALE 6:1

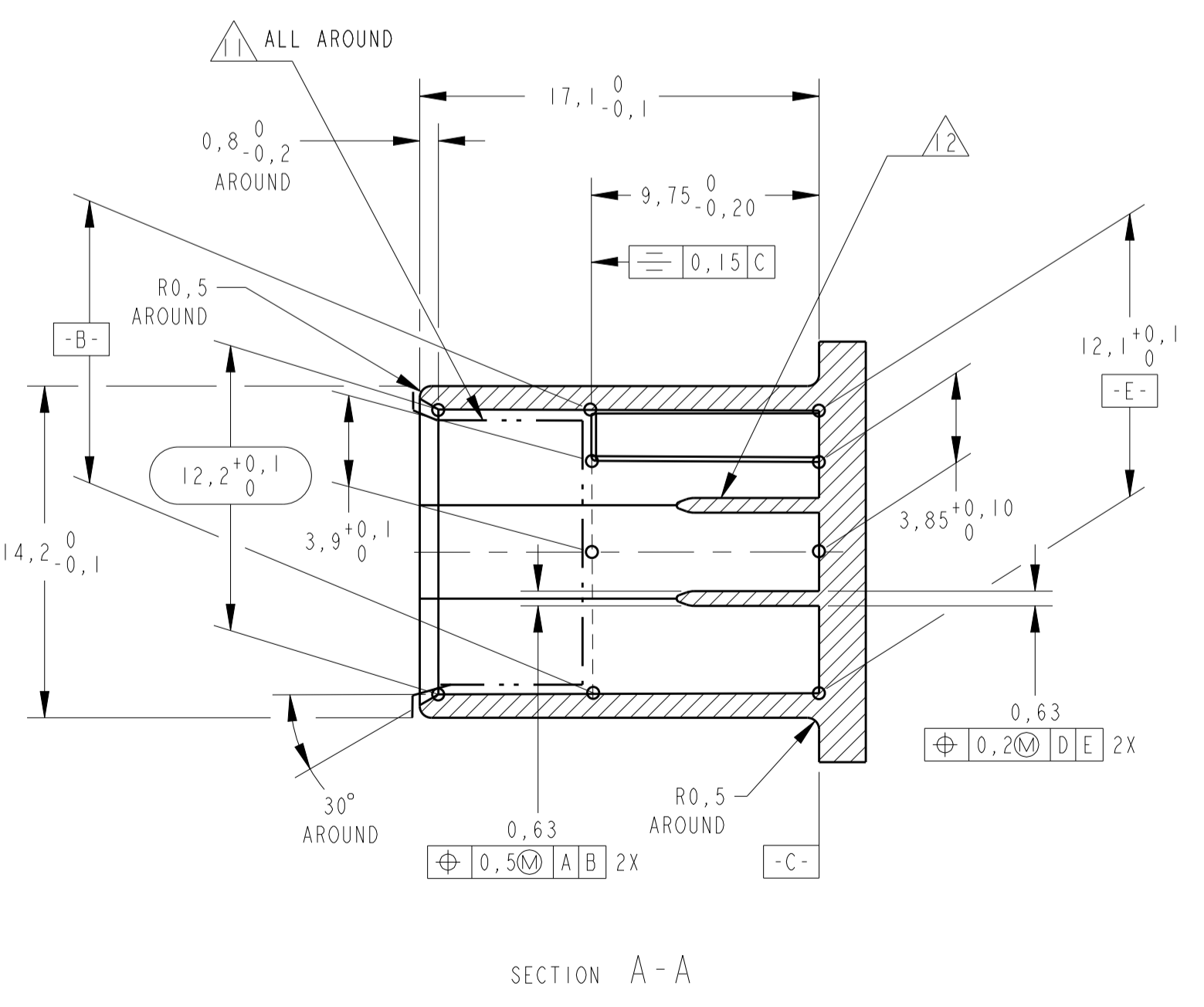
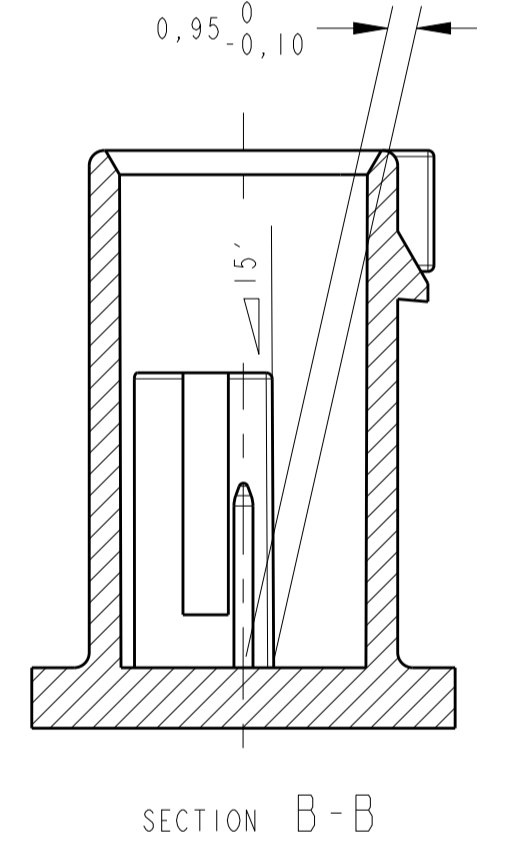
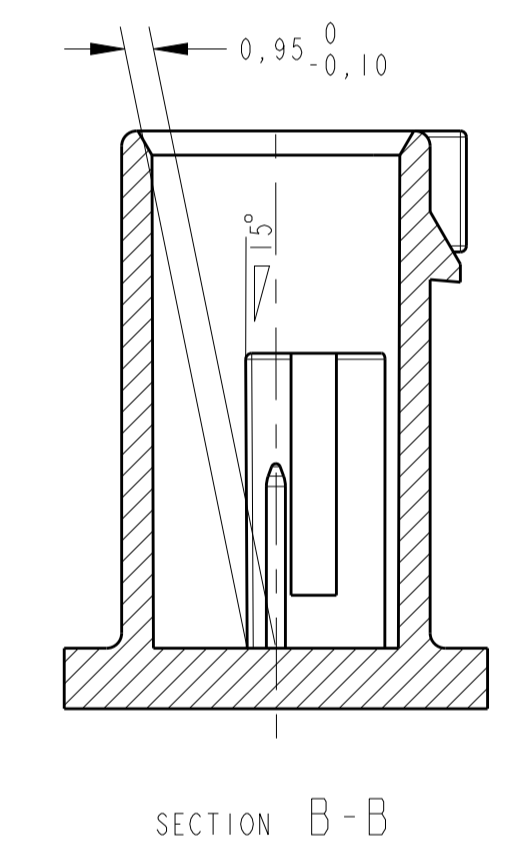
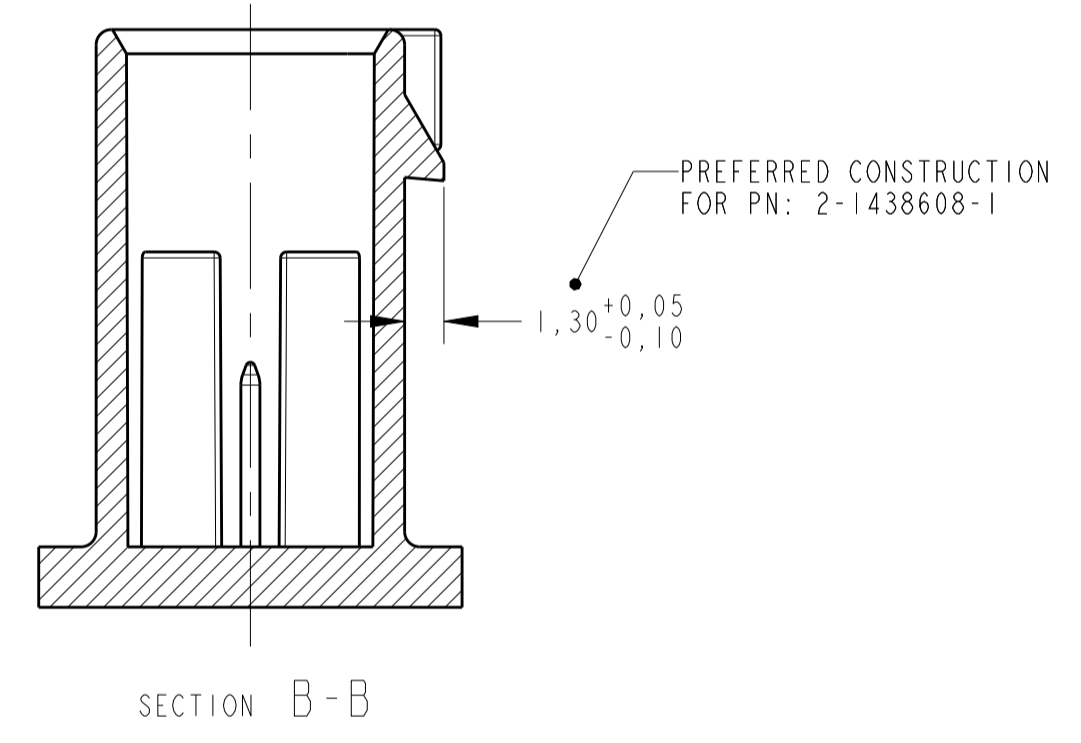


KEY CODE D 1: Δ
 1-1438708-4 AND 1-1438608-8 ONLY
 SCALE 6:1

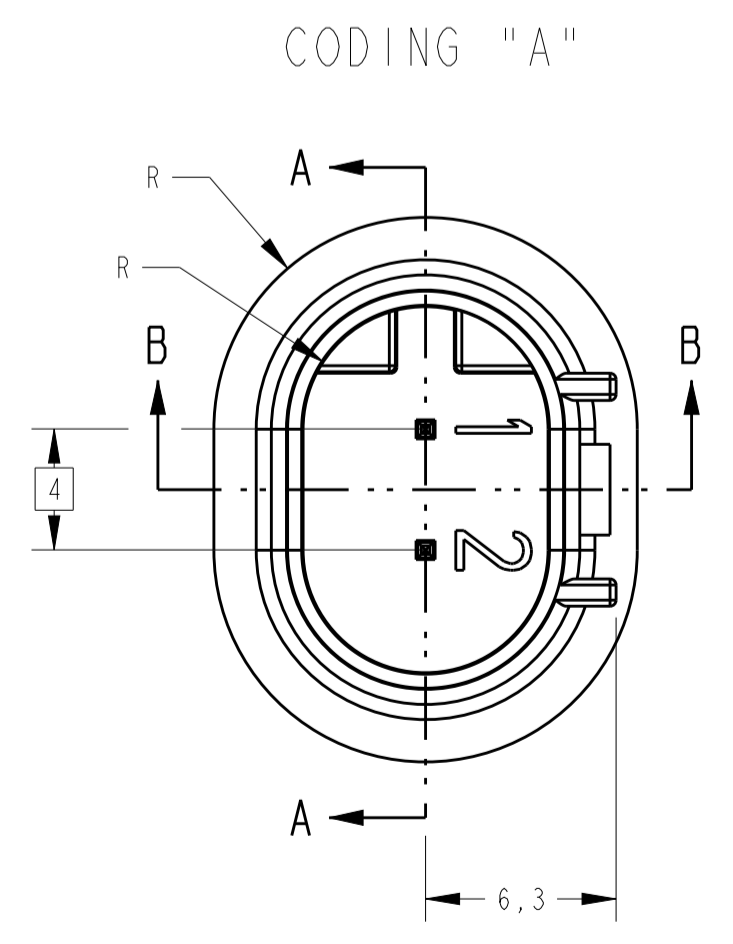
MATING CONNECTOR INFORMATION



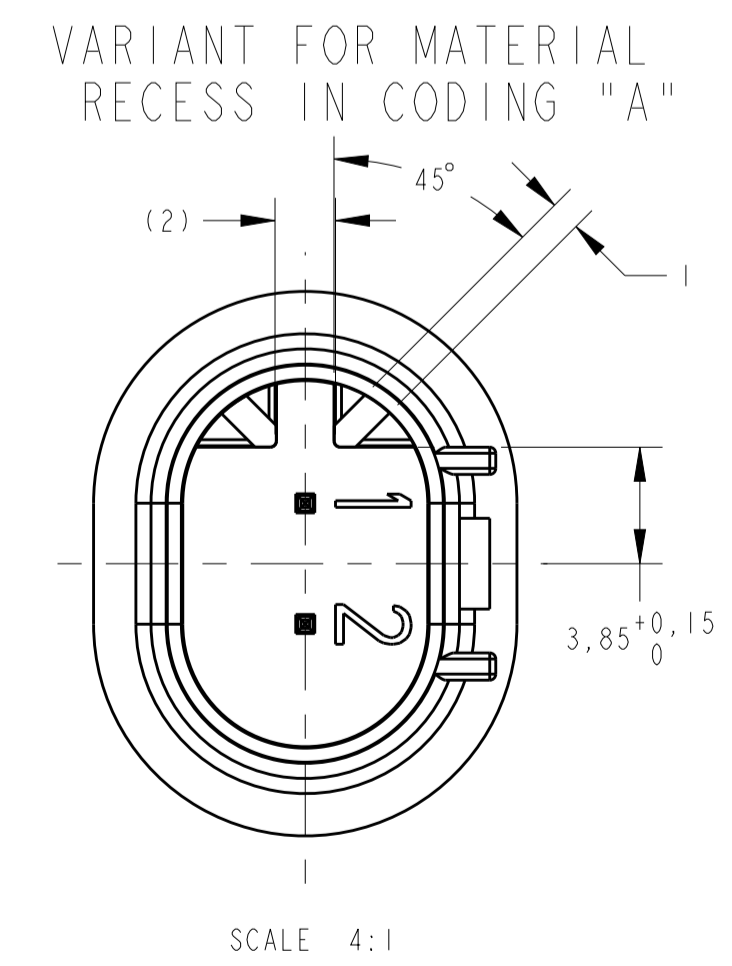
- CONSTRUCTION FOR PNs:
- 1-1438608-1
 - 1-1438608-3
 - 1-1438608-5
 - 1-1438608-7
 - 2-1438608-1
 - 1-1438608-2
 - 1-1438608-4
 - 1-1438608-6
 - 1-1438608-8



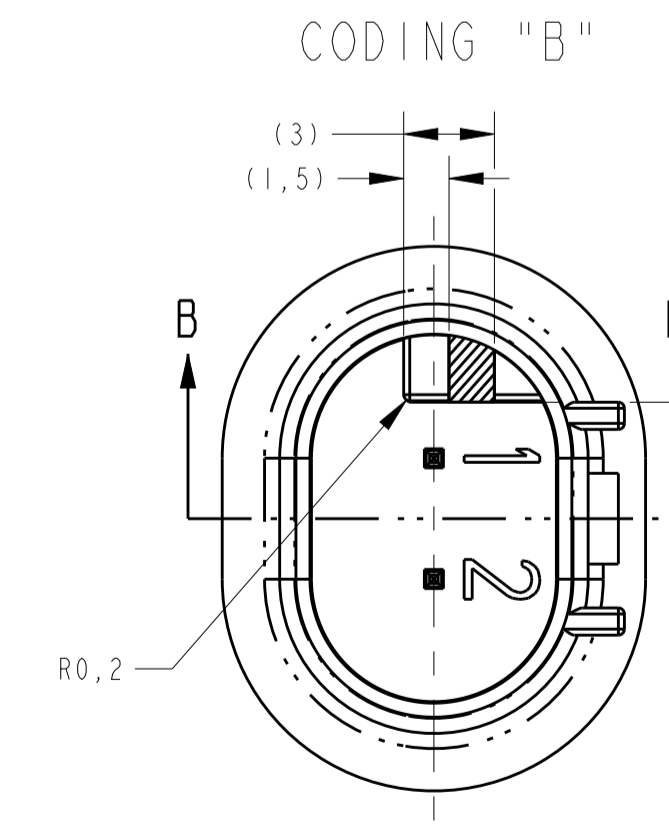
SECTION A-A



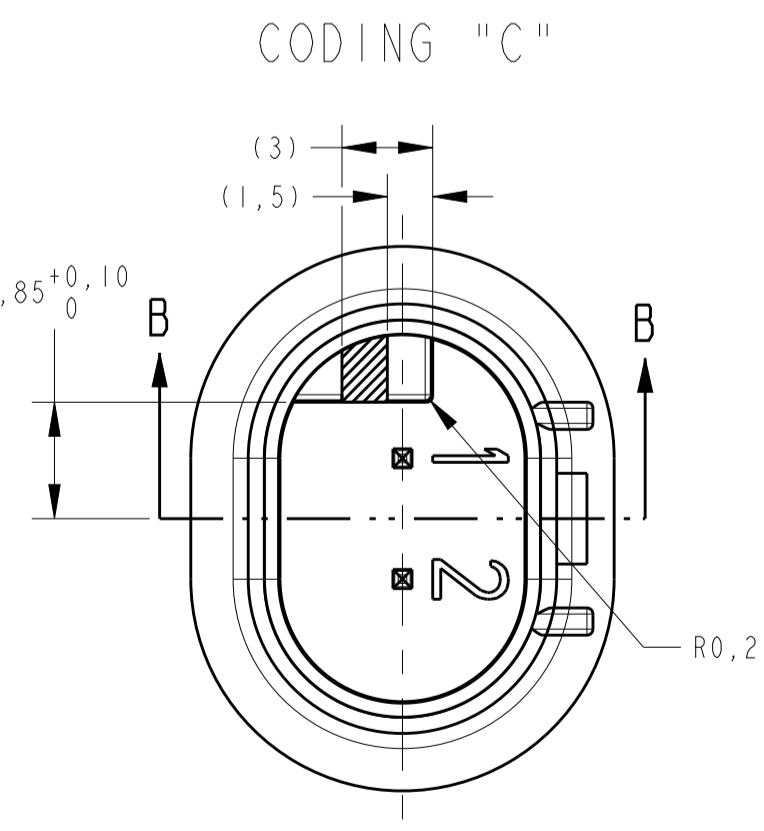
SCALE 4:1



SCALE 4:1



SCALE 4:1



SCALE 4:1

THIS DRAWING IS A CONTROLLED DOCUMENT.		OWN: R. FOLTZ 28APR2004	TE Connectivity
DIMENSIONS: mm		CHK: B. BUCHNER 28APR2004	
TOLERANCES UNLESS OTHERWISE SPECIFIED:		APPV: B. BUCHNER 28APR2004	NAME: PLUG ASSEMBLY, 2 POSITION, SEALED, MOS CLEAN BODY CONNECTOR
0 PLC	±	PRODUCT SPEC	SIZE: A1
1 PLC	±0,5	APPLICATION SPEC	CAGE CODE: 00779
2 PLC	±0,13	ANGLES	DRAWING NO: 114-37012
3 PLC	±	FINISH	WEIGHT
4 PLC	±	SEE TABLE	CUSTOMER DRAWING
MATERIAL: SEE TABLE		SCALE: 4:1	SHEET 2 OF 2
REV: G1		DATE: 28APR2004	