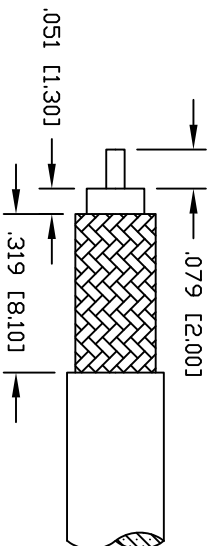
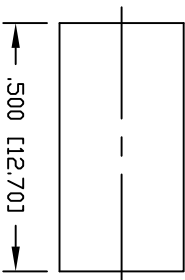
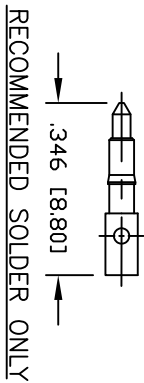
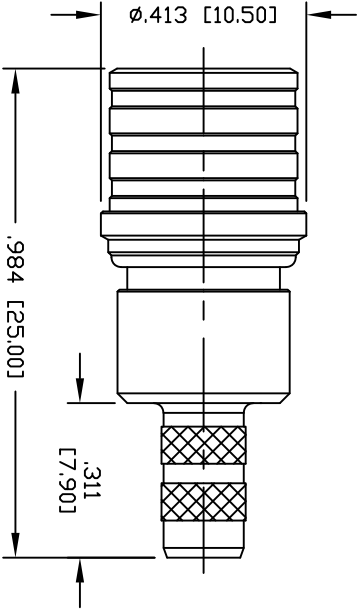


PART NO.		ROA-5000-C1		
REV	DESCRIPTION	DWN	DATE	APPROVED
A	UPGRADED CONNECTOR DESIGN, DWG FORMAT & SPECS	CZ	12/21/20	JDMc



SPECIFICATIONS:

IMPEDANCE: 50 Ohms
 FREQUENCY RANGE: 0-6 GHz
 INSULATION RESISTANCE: 5k MΩ min.
 TEMPERATURE RANGE: -65°C TO 165°C
 FOR RG-55, 55A, 55B, 142, 142A, 142B, 223 & 400/U,
 ALPHA 9055, 9055B, 9223, BELDEN 8219, 83242 & 84142 CABLES

#	DESCRIPTION	QTY	MATERIAL	FINISH
6	COUPLING NUT	1	BRASS	CUSnZn
5	FERRULE	1	BRASS	CUSnZn
4	GROUND RING	1	PHOSPHOR BRONZE	CUSnZn
3	PIN	1	BRASS	GOLD
2	INSULATOR	1	PTFE	NATURAL
1	BODY	1	BRASS	CUSnZn

CUSTOMER OUTLINE DRAWING ALL DIMENSIONS ARE REFERENCE ONLY	
UNLESS OTHERWISE SPECIFIED: DIMENSIONS ARE IN INCHES AND [MILLIMETERS]	
DRAWN C. ZUNIGA	12/21/20
CHECKED	
ORG DRAWN C. ZUNIGA	03/09/04

ROHS COMPLIANT

PROPRIETARY AND CONFIDENTIAL
 THIS DRAWING CONTAINS
 INFORMATION PROPRIETARY TO
 RF INDUSTRIES. ANY
 UNAUTHORIZED USE OF THIS
 DRAWING IS EXPRESSLY
 PROHIBITED WITHOUT WRITTEN
 PERMISSION FROM RF
 INDUSTRIES. ANY VIOLATION IS
 PUNISHABLE UNDER U.S.
 COPYRIGHT LAWS.

RF Industries
 DIVISION OF RF INDUSTRIES, LTD. (858) 549-5340
 7610 MIRAMAR RD.
 SAN DIEGO, CA 92126
 (858) 549-5340
 (858) 549-5345 FAX

QMA CRIMP PLUG

DWG # **ROA-5000-C1**

CABLE GROUP	CONTROL #	SCALE	FORMAT	SHEET	REVISION
C1	000000	NTS	A	1 OF 1	A