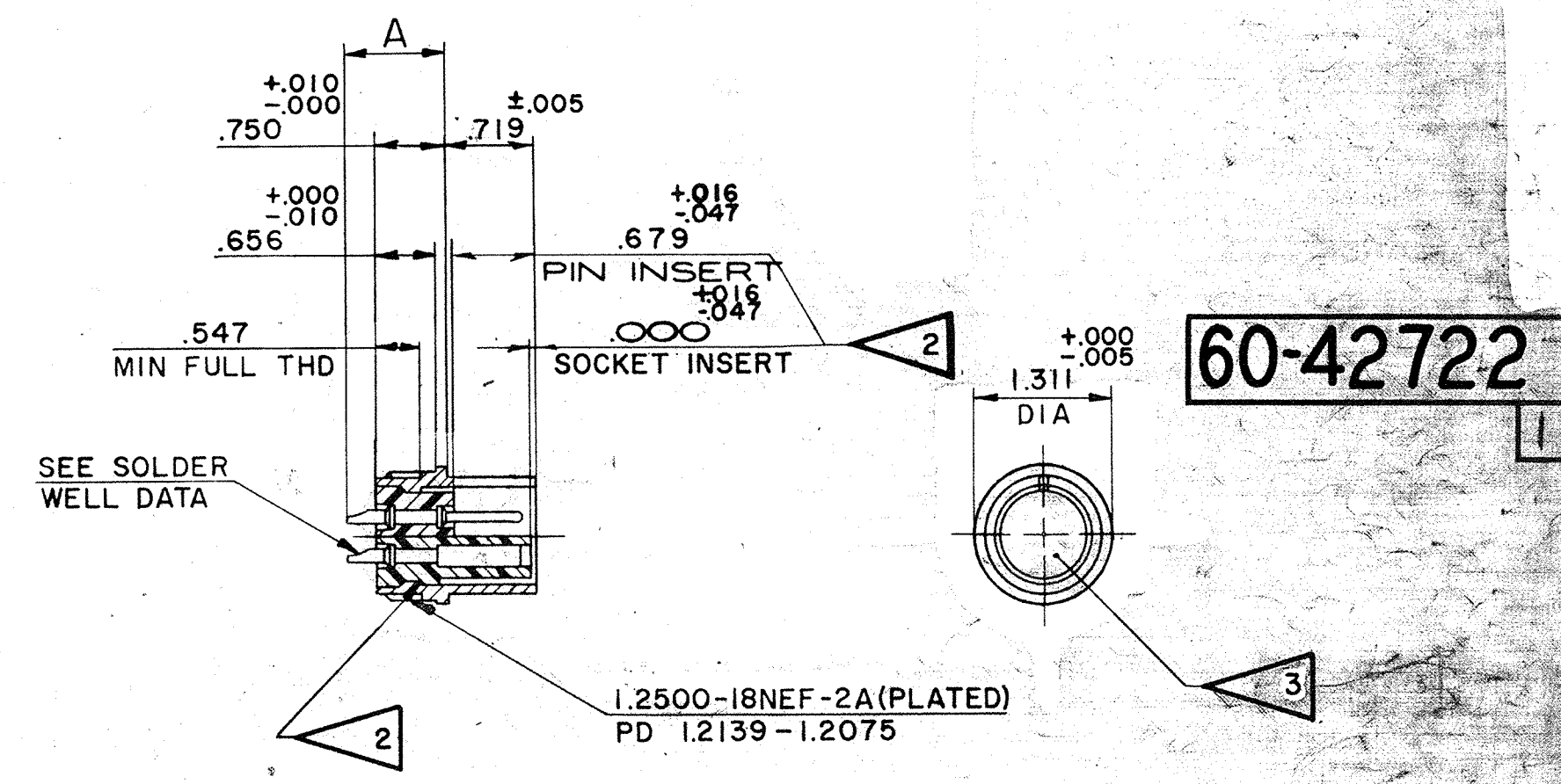


ASSY NO.	ORDNANCE NO.	SHELL	INSERT	CONTACT			RELEASE	WT-LB
				QTY	SIZE	PART NO.		
60-42722-2P	8724237	60-37256-22	10-74822-2P	3	8	10-35531	35508-509	
-2S	8724238		-2S	3	8	10-35532		
-4P	8724239		-4P	2	8	10-35531		
				2	12	10-33646		
-4S	8724240		-4S	2	8	10-35532		
				2	12	10-33644		
-7P	8724241		-7P	1	0	10-35527		
-7S	8724242		-7S	1	0	10-35528		
-15P	8724245		-15P	5	12	10-33646		
				1	16M	10-40599		
-15S	8724246		-15S	5	12	10-33644		
				1	16M	10-40598		
-19P	8724247		-19P	14	16M	10-40599		
-19S	8724248		-19S	14	16M	10-40598		
-22P	8724249		-22P	4	8	10-35531		
-22S	8724250		-22S	4	8	10-35532		
-23P	8724243		-23P	8	12	10-33646		
-23S	8724244		-23S	8	12	10-33644		

REL	WAS	DATE	D'MAN	APPD.
35508-509		1-29-62	Lambert	Johnd
1 39123	ADD. TEST 9-4435			
-2	(PRO SPEC)			



USE OF THIS DOCUMENT IS UNLIMITED. DOCUMENTS REFERENCED HEREON CONTAIN LIMITED RIGHTS DATA.

SOLDER WELL DATA						
CONTACT SIZE	0	4	8	12	16	16M
WELL DIA.	.469 ±.005 -.003		.209 ±.004 -.002	.116 ±.004 -.002		.078 ±.004 -.002
WELL DEPTH	.625		.500	.250		.188
DIMENSION A ±.045	1.125		.813	.813		.813

- FOR CONTACT SIZE, SPACING & SERVICE RATING, SEE DRAWING AND IO431.
- DIMENSIONS MUST BE MAINTAINED WHEN INSERTS ARE PRESSED FIRMLY AGAINST INDICATED SHOULDER. SOCKET INSERT FACE MAY PROJECT FROM SHELL .047 MAX OR RECEDE IN SHELL .016 MAX AS DIMENSIONED.
- UNITS ILLUSTRATED MEET THE MATERIAL & FINISH REQUIREMENTS OF AN3106A PER MIL-C-5015.

4. FOR MATING RECEPTACLE ASSEMBLIES, SEE DRAWINGS 60-42022, 60-42122, & 60-42222.

MATERIAL SPEC.	PROCESS SPEC. ASSY 9-3103-1 TEST 9-4435	SCINTILLA MAGNETO DIVISION BENDIX AVIATION CORPORATION SIONEY, N.Y., U.S.A.				TOLERANCES UNLESS OTHERWISE SPECIFIED DECIMALS ± .010			
HEAT TREAT. SPEC.	FINISH SPEC.	NAME CONNECTOR, ELECTRICAL PLUG, TYPE C22MC				NEXT ASSEMBLY SEE WT COL			
		D'MAN	CHECKER	MAT.	ST DS	CR-D MAN	APPROVED	SCALE	SUPPERSEDED BY
		LAMBERT	Horton		White	Quinn	Hammer	NONE	REF 60-42622
		5-19-65	6-30-59		2-2-59	7-2-58			60-42722