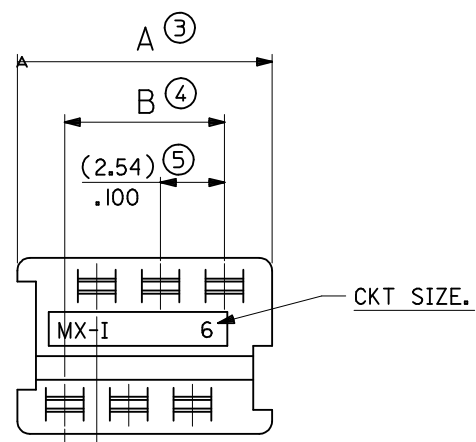


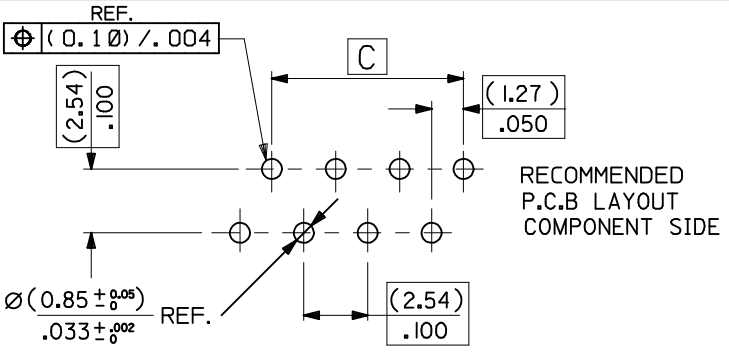
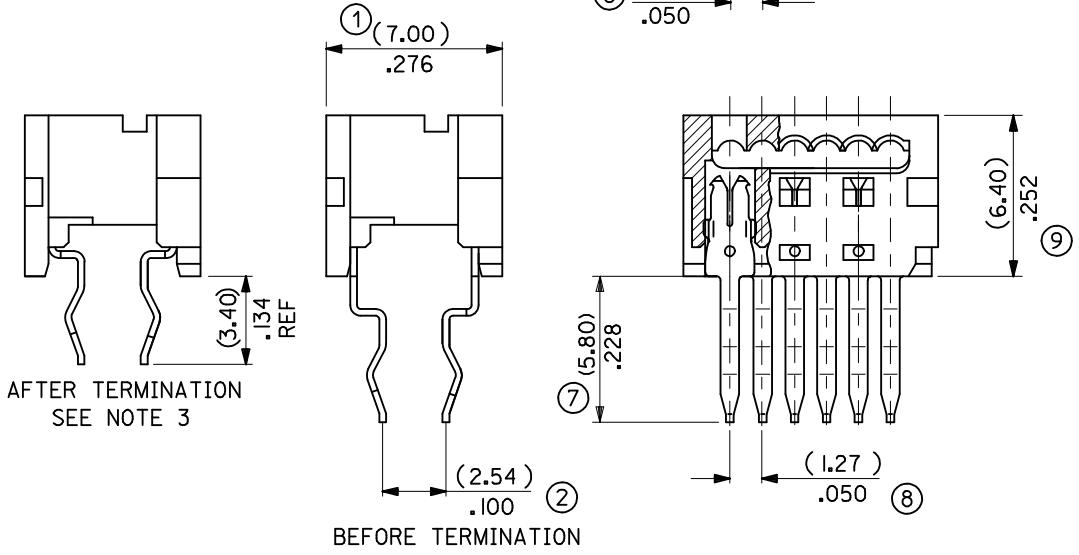
| | | | | | |
|----------|----------|----|---------------|---------------|---------------|
| 90584 | -**26 | 26 | (35.53)/1.399 | (31.75)/1.250 | (30.48)/1.200 |
| | -**24 | 24 | (32.99)/1.299 | (29.21)/1.150 | (27.94)/1.100 |
| | -**22 | 22 | (30.45)/1.199 | (26.67)/1.050 | (25.40)/1.000 |
| | -**20 | 20 | (27.91)/1.099 | (24.13)/.950 | (22.86)/.900 |
| | -**18 | 18 | (25.37)/.999 | (21.59)/.850 | (20.32)/.800 |
| | -**16 | 16 | (22.83)/.899 | (19.05)/.750 | (17.78)/.700 |
| | -**14 | 14 | (20.29)/.799 | (16.51)/.650 | (15.24)/.600 |
| | -**12 | 12 | (17.75)/.699 | (13.97)/.550 | (12.70)/.500 |
| | -**10 | 10 | (15.21)/.599 | (11.43)/.450 | (10.16)/.400 |
| | -**08 | 8 | (12.67)/.499 | (8.89)/.350 | (7.62)/.300 |
| | -**06 | 6 | (10.13)/.399 | (6.35)/.250 | (5.08)/.200 |
| 90584 | -**04 | 4 | (7.59)/.299 | (3.81)/.150 | (2.54)/.100 |
| PART NO. | CCT SIZE | | DIMENSION A | DIMENSION B | DIMENSION C |



HOUSING
MATL. POLYESTER, RATED UL 94V-0, COLOUR WHITE.

IDT CONTACT
MATL : PHOSPHOR BRONZE (0.28)/.011 REF THICK.
PLATING : (2-4um) / 80-160u" TIN

- NOTES:**
1. APPL. CLASS TO DIN 40040 HME (-25°C/+100°C)
 2. PRODUCT SPECIFICATION: PS-99020-0011
 3. WIRE TERMINATION SPEC: ES-99033-0002
 4. PACKAGING SPEC: PK-90584-001
- 90584- * * * *
- 04 TO 26 = CKT SIZE.
 - 3= NO CIRCUITS VOIDED.
 - 4= CIRCUITS 4 & 5 VOIDED.
 - 1= INDIVIDUAL TUBED ASSY
 - 2= STACKED TUBED ASSY - SEE SHEET 2
 - 8 = NON STANDARD TUBE OPTION - SEE SHEET 3
 - 9= NON STANDARD OPTION - SEE SHEET 3



| | | | | | | | | | | | |
|---|-------------------------------|---|-----------------------|---------------------------|---------------------|---------------------------|--|--|---|---|---------------------------|
| ADDED NON STD TUBE EC NO: IPG2015-0003 DRWN:DBYRNES 2014/07/07 CHKD: APPR:STGRFFIN 2014/10/30 | QUALITY SYMBOLS ▽=0 ▽=0 | GENERAL TOLERANCES (UNLESS SPECIFIED) | | DIMENSION STYLE MM/IN | SCALE 5:1 | DESIGN UNITS METRIC | THIRD ANGLE PROJECTION | | | | |
| | | 4 PLACES ± --- ± --- | 3 PLACES ± --- ± .010 | 2 PLACES ± 0.25 ± --- | 1 PLACE ± --- ± --- | ANGULAR ± 2 ° | DRAWN BY DMCNAMAR DATE 2003/09/01 | CHECKED BY BMAGUIRE DATE 2003/09/01 | APPROVED BY MWILHITE DATE 2003/09/01 | TITLE 1.27MM PF LOW PRO IDT BOARD-IN CONNECTOR | MATERIAL NO. SDA-90584 |
| DRAFT WHERE APPLICABLE MUST REMAIN WITHIN DIMENSIONS | | SEE CHART | | MATERIAL NO. SDA-90584 | | MATERIAL NO. SDA-90584 | | | | | |
| SIZE A3 | | THIS DRAWING CONTAINS INFORMATION THAT IS PROPRIETARY TO MOLEX INCORPORATED AND SHOULD NOT BE USED WITHOUT WRITTEN PERMISSION | | | | | | | | | |