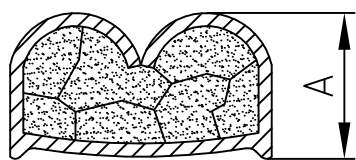
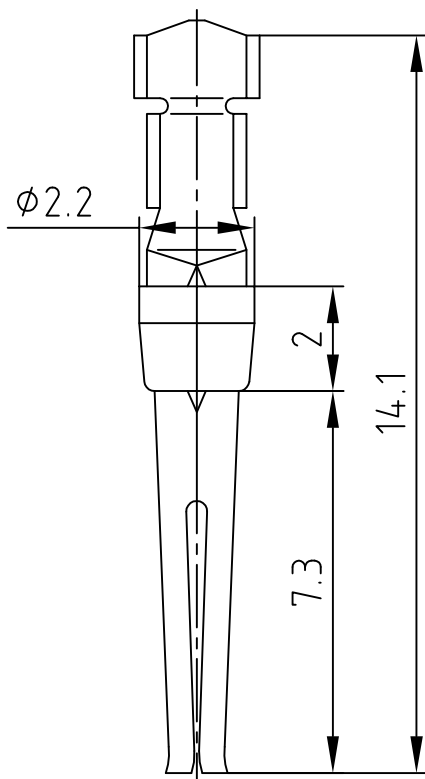


used for: D-SUB

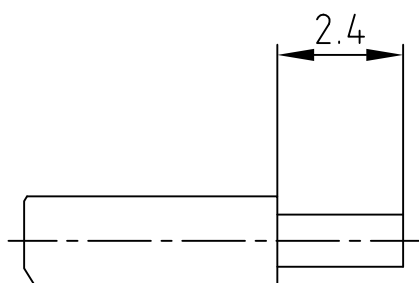


(b)

Wire size AWG	Crimp height A
28	0,61 - 0,76
26	0,66 - 0,81
24	0,66 - 0,86



STRIPPING DIMENSIONS (b)



(b) TECHNICAL DATA:

Material Stamped Contacts: Phosphor Bronze
 Finish: Gold Flash over Nickel in the Contact Area
 Temperature Range: -55°C to +125°C
 Rated Current: 7.5A
 Test Voltage: 1000V eff. at 50Hz
 Contact Resistance: <= 10mOhm
 Insulation Resistance: >= 5000MOhm
 Crimping: Use Crimp Tool 360X10079X

Directive 2002/95/EC RoHS compliant

THIS DRAWING MAY NOT BE COPIED OR REPRODUCED IN ANY WAY, AND MAY NOT BE PASSED ON TO A THIRD PARTY WITHOUT WRITTEN PERMISSION.
 OWNERSHIP AND COPYRIGHT OF CONEC GmbH
 DO NOT ALTER CAD DRAWING BY HAND

				tolerance				scale: 5:1	
				material: SEE NOTES					
				title: SOCKET CONTACT CRIMP AWG 28-24					
				dwg no: AutoCAD 2006		DIN-A 4			
				part no: 162A11889X		sh: 1/1			
2002	date	name							
drawn	22.02.	Parei							
appd.	22.02.	E. Mickenbecker							
norm									
d-old									
3 x b	Ä 4116	27.09.2011	Lehmen.	CONEC®					
a	Original								
rev.	description	date	name						



dwg no: AutoCAD 2006
 16K1A500
 part no: 162A11889X