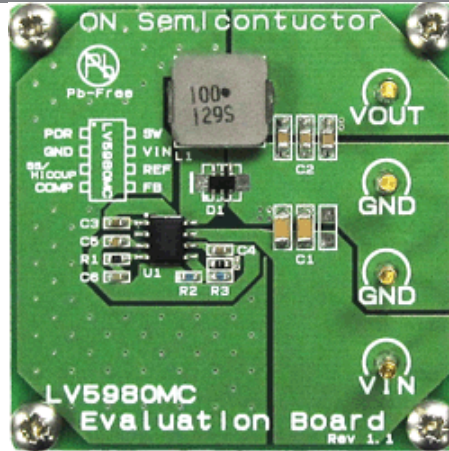




LV5980MCGEVB:1-Channel DC-DC Converter Evaluation Board

Evaluation Board Description

LV5980MC is 1ch DCDC converter with built-in power Pch MOSFET. The recommended operating range is 4.5V to 23V. The maximum current is 3A. The operating current is about 63μA, and low power consumption is achieved.



Design Support

- » [Technical Documentation](#)
- » [Design Resources](#)
- » [Technical Support](#)
- » [Sales Support](#)

Evaluation Board Information

Evaluation Board	Status	Pb-free	Short Description	Parts Used	Action
LV5980MCGEVB	Active		1-Channel DC-DC Converter Evaluation Board	LV5980MC-AH	

Technical Documents

Type	Document Title	Document ID/ Size	Rev
Eval Board: BOM	LV5980MCGEVB Bill of Materials ROHS Compliant	LV5980MCGEVB_BOM_ROHS.PDF - 42.0 KB	0
Eval Board: Gerber	LV5980MCGEVB Gerber Layout Files (Zip Format)	LV5980MCGEVB_GERBER.ZIP - 216.0 KB	0
Eval Board: Schematic	LV5980MCGEVB Schematic	LV5980MCGEVB_SCHEMATIC.PDF - 618.0 KB	0
Eval Board: Test Procedure	LV5980MCGEVB Test Procedure	LV5980MCGEVB_TEST_PROCEDURE.PDF - 887.0 KB	0

