

4

3

2

1

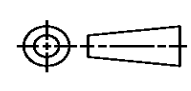

THIS DRAWING IS UNPUBLISHED. RELEASED FOR PUBLICATION
 © COPYRIGHT ALL RIGHTS RESERVED.

LOC	DIST	REVISIONS			
P	LTR	DESCRIPTION	DATE	DWN	APVD
	B1	ECR-16-009824	28JUL2016	GK	SD

REPLACED BY OCEAN STYLE APPLICATOR PART NUMBER 2151286-1

FOR REPLACEMENT PARTS FOR APPLICATOR 1528481
 REFER TO ADDITIONAL PAGE(S). SPARE PARTS KIT (IF LISTED)
 WILL REMAIN AVAILABLE.

THE REPLACEMENT OCEAN STYLE APPLICATOR HAS THE
 SAME TERMINATOR/PRESS INTERFACE AS APPLICATOR
 1528481

THIS DRAWING IS A CONTROLLED DOCUMENT.		DWN	GOPALAKRISHNA HV		
DIMENSIONS:		CHK	GOPALAKRISHNA HV		
		TOLERANCES UNLESS OTHERWISE SPECIFIED:		 TE Connectivity	
		APVD	STOUGH DALE		
		PRODUCT SPEC	NAME		
		APPLICATION SPEC	FINE ADJ SIDE FD HD-I APPL		
MATERIAL		WEIGHT	SIZE	CAGE CODE	DRAWING NO
FINISH			A3		©- 1528481
		CUSTOMER ACCESSIBLE PRODUCTION DRAWING		SCALE	SHEET 1 OF 2 REV B1

PART NUMBER	REV	FIRST USED	TERMINATOR	FEED TYPE	DESCRIPTION
1528481-1	B	-	LEADMAKER	MECH POST FEED	CUTS CARRIER
1528481-2	B	-	BENCH	MECH PRE FEED	CUTS CARRIER
1528481-6	B	-	LEADMAKER	MECH POST FEED	CONTINUOUS CARRIER
7-1528481-1	B	-	LEADMAKER	MECH POST FEED	-1 AND SPARE PARTS
7-1528481-2	B	-	BENCH	MECH PRE FEED	-2 AND SPARE PARTS
7-1528481-6	B	-	LEADMAKER	MECH POST FEED	-6 AND SPARE PARTS
7-1528481-7	A	-	-	-	SPARE PARTS KIT

THIS DRAWING IS A CONTROLLED DOCUMENT.

CRIMP DATA AMP TERMINAL AMP CRIMP SPECS

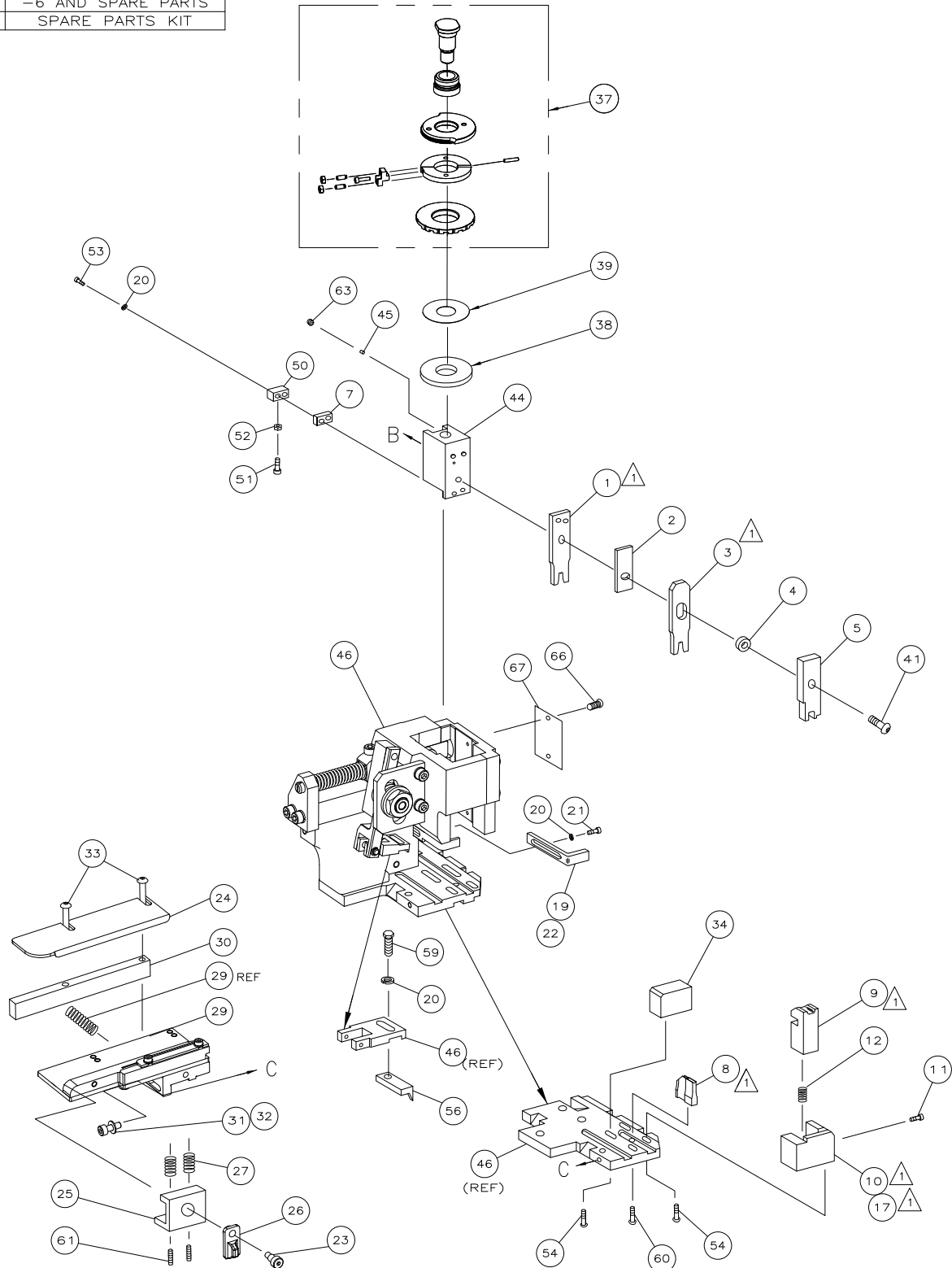
CRIMP	SIZE	TYPE	RANGE
WIRE	1.40 [.055 IN]	F	30-22 AWG
INSUL	2.29 [.090 IN]	F	1.00-1.90 [.040-.075 IN]
WIRE STRIP LENGTH	APPL INSTRUCTION		
3.96-4.75 [.156-.187 IN]	408-8322 & 408-8490		

TERMINAL	APPL SPEC	FEED
-	114-1012	9.05 [.356 IN]

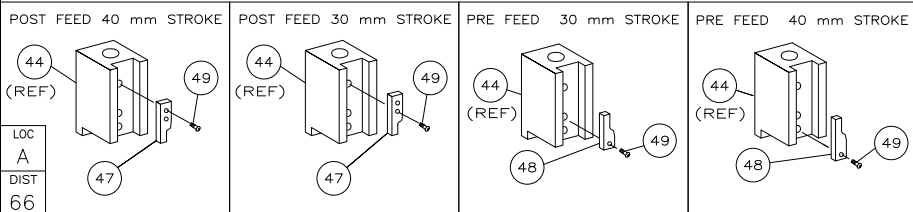
WIRE SIZE mm ² AWG	CRIMP HEIGHT *	REF SETTING *
22 AWG	0.94 ±0.05 [.037 ±0.002 IN]	B 3
24 AWG	0.89 ±0.05 [.035 ±0.002 IN]	B 7
26 AWG	0.84 ±0.05 [.033 ±0.002 IN]	C 1
28 AWG	0.81 ±0.05 [.032 ±0.002 IN]	C 3
30 AWG	0.79 ±0.05 [.031 ±0.002 IN]	C 5

SET UP GAGE	LAYOUT
458637-3	L1426168

- 1. RECOMMENDED SPARE PARTS.
- 2. GREASE RAM, CAM, CAM FOLLOWER AND FEED ROD LIGHTLY.
- 3. LUBRICATE DAILY PER THE APPLICATOR INSTRUCTION SHEET SUPPLIED WITH THE APPLICATOR.
- 4. FEED REQUIRES ADJUSTMENT WHEN CHANGING FROM ONE TERMINAL TO ANOTHER.



VIEW B ROTATED 180°



*** WARNING:**

ON INSTALLATION, SET WIRE DISC TO LARGEST WIRE SIZE SETTING. USE OF SETTINGS BELOW MIN REQUIRED CRIMP HEIGHT SETTING WILL CAUSE DAMAGE TO CRIMP TOOLING.

GUIDE OFF INSULATION BARREL

QTY	REQD	PER	ASSY	PART NO	DESCRIPTION	ITEM NO	
-	1	1	1	1	1528481	PRINT, APPLICATOR LOG SHEET	73
-	1	1	1	1	1338705-3	DOCUMENTATION PACKAGE	72
-	1	1	1	1			70
-	1	1	1	1	461264-5	PLATE, IDENTIFICATION	68
-	2	2	2	2	21017-2	SCR,DRIVE(#2x.19)ID PLATE	67
-	1	1	1	1			66
-	1	1	1	1	3-18031-0	SCR,SKT SET(M6X6)RAM	65
-	2	2	2	2	2-18032-5	SCR,SKT,SET(M5X20)DRAG	64
-	1	1	1	1	18024-7	SCR,BHC(M4X10)ANVIL	63
-	1	1	1	1	5-18022-2	SCR,HEX(M4X8)FEED FINGER	62
-	1	1	1	1			61
-	1	1	1	1	1338685-1	PAWL, FEED	60
-	4	4	4	4	18024-8	SCR,BHC(M4X12)SHEAR HOLDER	59
-	2	2	2	2	1-18023-3	SCR,SHC(M4X16)TERM HLD DWN	58
-	1	1	1	1	18030-1	NUT,HEX(M3)HOLD DOWN	57
-	1	1	1	1	811242-5	BUMPER, HOLDDOWN	56
-	1	1	1	1	690753-2	SPACER, TONKER	55
-	1	1	1	1	18024-3	SCR,BHC(M3X10)CAM	54
-	1	1	1	1	1338675-1	CAM, PRE FEED 30 & 40 mm ST	53
-	1	1	1	1	1338676-1	CAM, POST FEED 30 & 40 mm ST	52
-	1	1	1	1	1320999-3	APPLICATOR BASIC SUBASSY	51
-	1	1	1	1	690191-1	PLUG, NYLON	50
-	1	1	1	1	1338660-1	RAM	49
-	1	1	1	1			48
-	1	1	1	1	2-18024-6	SCR,BHC(M8X25)RAM	47
-	1	1	1	1	690125-1	SHIM SUBASSY	46
-	1	1	1	1	469367-7	SPACER, FINE ADJUST	45
-	1	1	1	1	879103-3	FINE ADJUST HEAD SUBASSY	44
-	1	1	1	1			43
-	1	1	1	1	1320934-1	SUPPORT, TERMINAL	42
-	2	2	2	2	1-18024-0	SCR,BHC(M4X20)STRIP GUIDE	41
-	1	1	1	1	18027-2	WASHER, FLAT(M4)	40
-	1	1	1	1	1-18023-2	SCR,SKT CAP(M4X12)MOUNT BLOCK	39
-	1	1	1	1	1320908-1	SPACER, STRIP GUIDE	38
-	1	1	1	1	1633073-1	STRIP GUIDE PLATE ASSY	37
-	2	2	2	2	1-22284-0	SPRING, DRAG	36
-	1	1	1	1	356835-1	LEVER, DRAG RELEASE	35
-	1	1	1	1	240792-1	DRAG, TERMINAL	34
-	1	1	1	1	1320928-1	PLATE, STRIP GUIDE	33
-	1	1	1	1	980371-4	SCR,SHC SHLD	32
-	1	1	1	1	690472-2	STRIPPER	31
-	1	1	1	1	1-18023-1	SCR,SHC(M4X10)STRIPPER	30
-	4	4	4	4	18025-2	WASHER_LOCK(M4)STRIPPER	29
-	1	1	1	1	690472-1	STRIPPER	28
-	1	1	1	1	1338684-1	HOLDER, SHEAR, FRONT (NO-CUT)	27
-	1	1	1	1			26
-	1	1	1	1	3-22280-3	SPRING, SHEAR	25
-	1	1	1	1	356885-4	STOP, SHEAR	24
-	1	1	1	1	1320921-1	HOLDER, SHEAR, FRONT (CUT)	23
-	1	1	1	1	462006-4	SHEAR, FLOAT (FRONT)	22
-	1	2	2	1	1-1333201-5	ANVIL	21
-	1	1	1	1	240641-3	SPACER, DEPRESSOR (REAR)	20
-	1	1	1	1			19
-	1	1	1	1	2-455889-0	DEPRESSOR, SHEAR (FRONT)	18
-	1	1	1	1	2-238011-2	SPACER, BLOCK CRIMPER	17
-	1	2	2	1	6-456134-3	CRIMPER, INSULATION	16
-	1	1	1	1	455888-7	SPACER, CRIMPER	15
-	1	2	2	1	1-456402-6	CRIMPER, WIRE	14
-	1	1	1	1			13
-	1	1	1	1			12
-	1	1	1	1			11
-	1	1	1	1			10
-	1	1	1	1			9
-	1	1	1	1			8
-	1	1	1	1			7
-	1	1	1	1			6
-	1	1	1	1			5
-	1	1	1	1			4
-	1	1	1	1			3
-	1	1	1	1			2
-	1	1	1	1			1

THIS INFORMATION IS CONFIDENTIAL AND PROPRIETARY TO TYCO ELECTRONICS CORPORATION AND ITS WORLDWIDE SUBSIDIARIES AND AFFILIATES. IT MAY NOT BE DISCLOSED TO ANYONE, OTHER THAN TYCO ELECTRONICS PERSONNEL, WITHOUT WRITTEN AUTHORIZATION FROM TYCO ELECTRONICS CORPORATION, HARRISBURG, PENNSYLVANIA, USA.