

# 4 / 5 Pin Mini ISO Automotive Relay Socket

**SC792**



**For use with, PC792A, PC792B, PC792C, PC792E and PC792H**

## FEATURES

- Mini ISO Automotive Relay Socket
- Heat Stabilized Thermoplastic
- -40 to 140°C Operating Temperature
- For Use with Wire Harnessing
- Seven Versions
  - Socket Only
    - 1 No Mounting Bracket for Relay
    - 2 No Mounting Bracket for Relay or Flasher
    - 3 With Mounting Bracket for Relay
  - With 12" Wire Leads
    - 1-5PIN-4Wire No Mounting Bracket for Relay
    - 1-5PIN-5Wire No Mounting Bracket for Relay
    - 3-5PIN-4Wire With Mounting Bracket for Relay
    - 3-5PIN-5Wire With Mounting Bracket for Relay

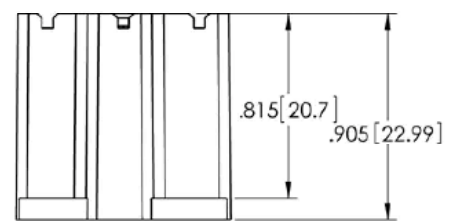
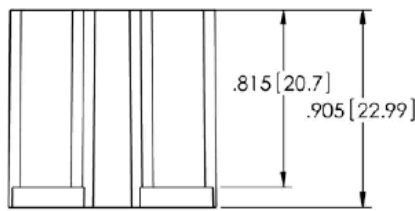
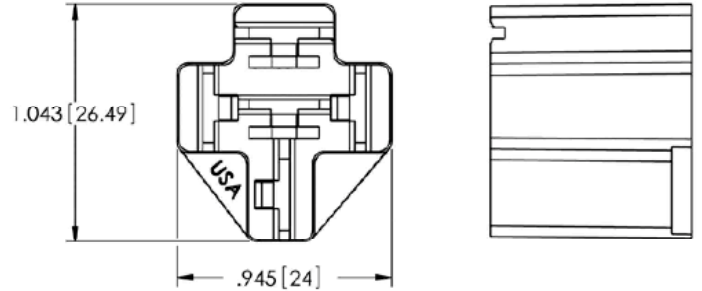
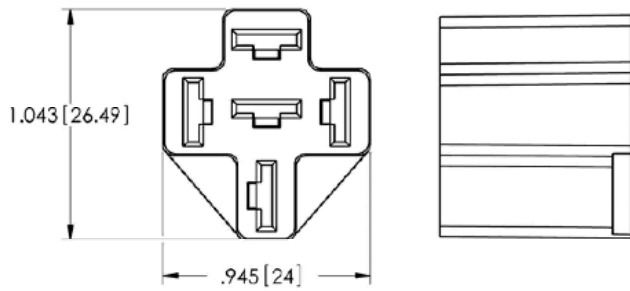
## ORDERING INFORMATION

| Part Number        | Description  | Terminal Form |
|--------------------|--|---------------|
| SC792-1            | 5 Pin Connector without Mounting Bracket for Wire Harness.   | Crimp 1A,1C   |
| SC792-2            | 5 Pin Connector for Relay Or Flasher without Mounting Bracket for Wire Harness.  | Crimp 1A,1C   |
| SC792-3            | 5 Pin Connector with Mounting Bracket for Wire Harness.  | Crimp 1A,1C   |
| SC792-1-5PIN-4Wire | 5 Pin Connector with 4 Wire Harness, without Mounting Bracket, SPST, 12" Wire Leads, 14 awg at Load Contacts 30 and 87, 18 awg at Coil Contacts 85 and 86.     | — 1A          |
| SC792-1-5PIN-5Wire | 5 Pin Connector with 5 Wire Harness without Mounting Bracket, SPDT, 12" Wire Leads, 14 awg at Load Contacts 30, 87 and 87a, 18 awg at Coil Contacts 85 and 86. | — 1A,1C       |
| SC792-3-5PIN-4Wire | 5 Pin, 4 Wire with Wall Mount Bracket, SPST, 12" Wire Leads, 14 awg at Load Contacts 30 and 87, 18 awg at Coil Contacts 85 and 86.                             | — 1A          |
| SC792-3-5PIN-5Wire | 5 Pin, 5 Wire with Wall Mount Bracket, SPDT, 12" Wire Leads, 14 awg at Load Contacts 30, 87 and 87a, 18 awg at Coil Contacts 85 and 86.                        | — 1A,1C       |

| Order From      | Part Number | AWG   | Blade |
|-----------------|-------------|-------|-------|
| TE Connectivity | 42100       | 14-18 | 1/4"  |
| TE Connectivity | 42281       | 14-18 | 1/4"  |
| TE Connectivity | 42904       | 12-16 | 1/4"  |
| TE Connectivity | 60249       | 12-16 | 1/4"  |
| TE Connectivity | 60253       | 12-14 | 1/4"  |

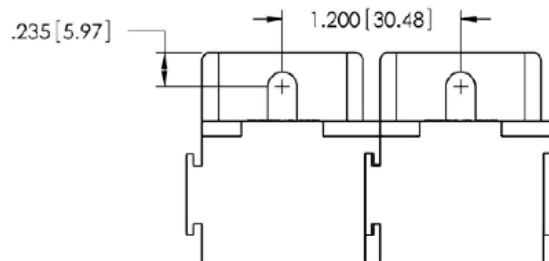
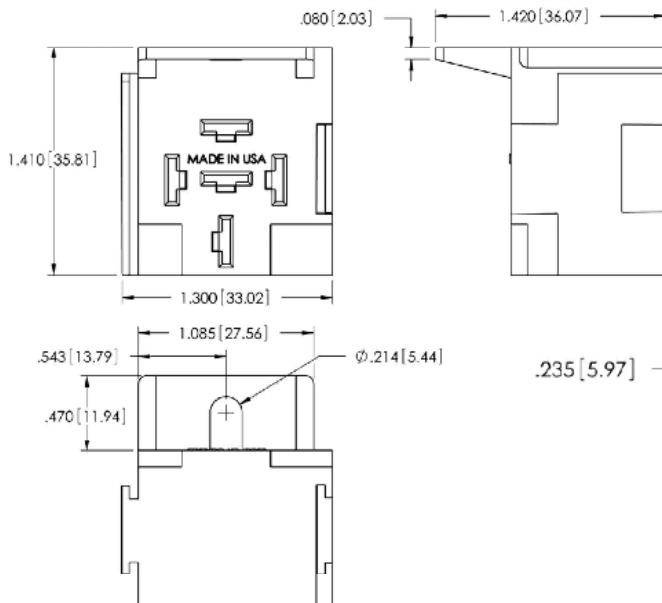
Picker Components references these terminals to be used with our Automotive\* Series Sockets. Current capability of the terminals depends on the gauge of wire used, the quality of the crimp, the addition of solder or a weld, operating conditions, temperature cycling, etc. Terminals to be purchased separately.

**DIMENSIONS (inches/mm)**



**SC792-1, SC792-1-5PIN-4Wire & SC792-1-5PIN-5WIRE**

**SC792-2**



**SC792-3, SC792-1-5PIN-4WIRE & SC792-1-5PIN-5WIRE**

**SC792-3 are Stackable**