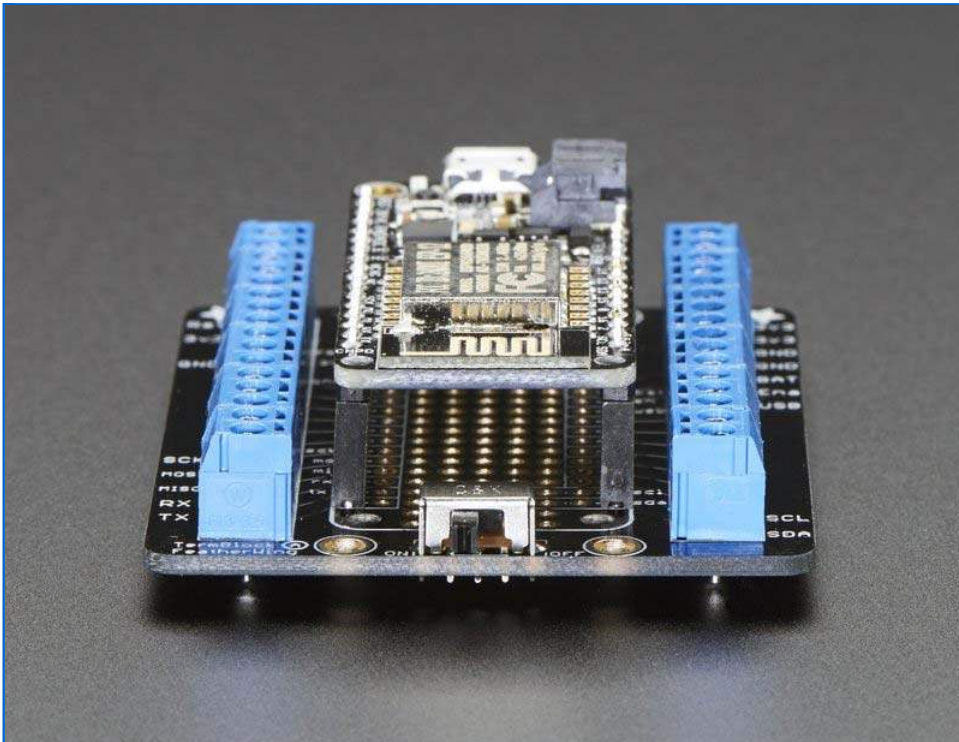
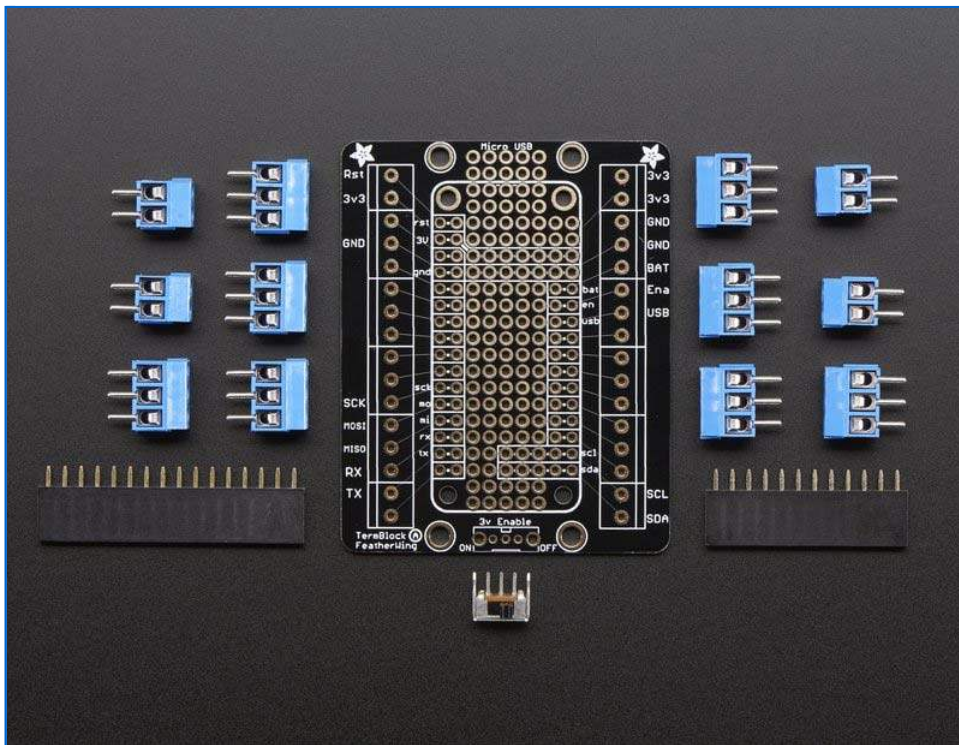


Finally, there's a spot for soldering in a slide switch. This connects the **EN** pin to ground when in the 'off' position, cutting off the 3.3V regulator. Note that the FONA Feather uses both VBat and 3.3V as power supplies so you won't be able to fully turn off the FONA Feather with this switch.

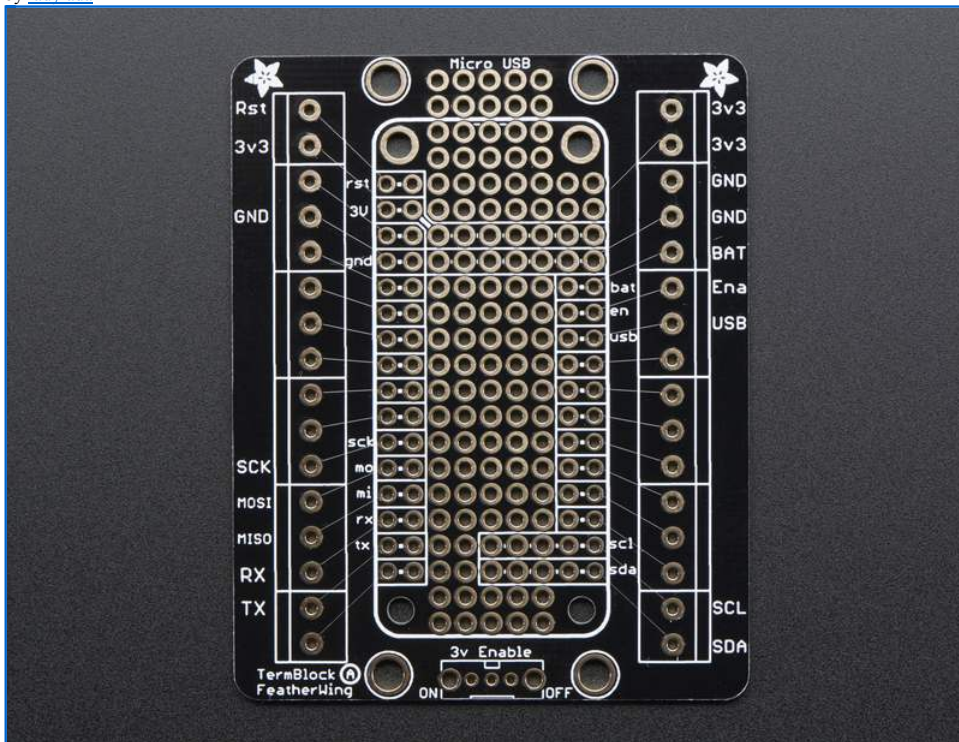


Comes as a kit with a nice PCB, socket headers, terminal blocks, and a slide switch. Soldering is required to assemble the Terminal Block Breakout FeatherWing, but it's not too tough if you've got a soldering iron and some basic hand tools.



Pinouts

by [lady ada](#)



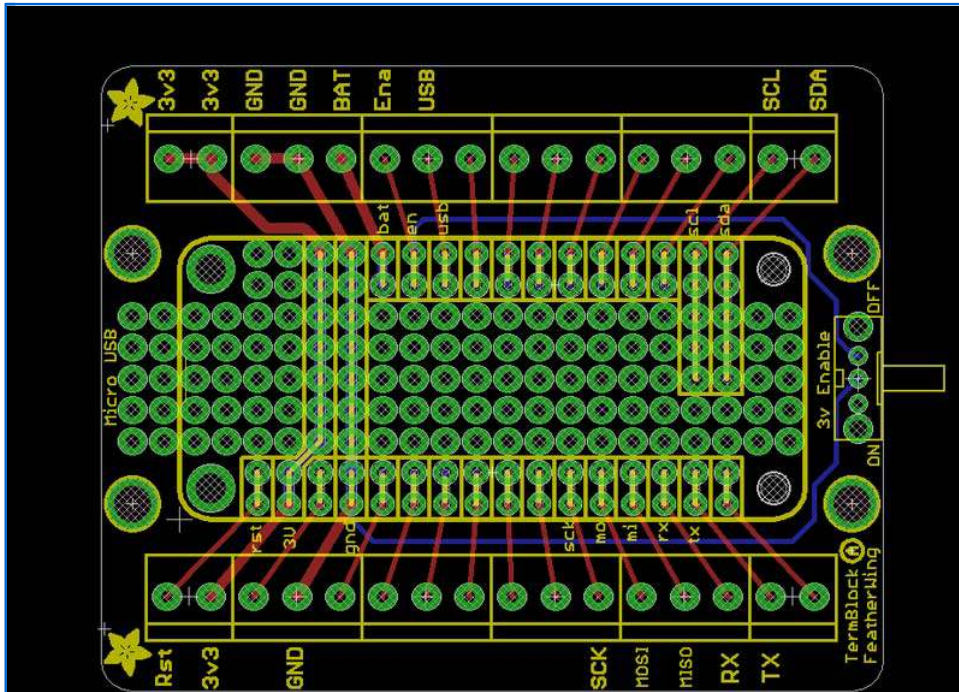
The TerminalBlock Featherwing doesn't have any active components. Instead, it just breaks out all the existing connections from a Feather. Note that Feathers use different chipsets so not all pins are labeled on purpose!

The only pins you can depend on are:

- 3.3V power
- 3.3V enable
- VBat power

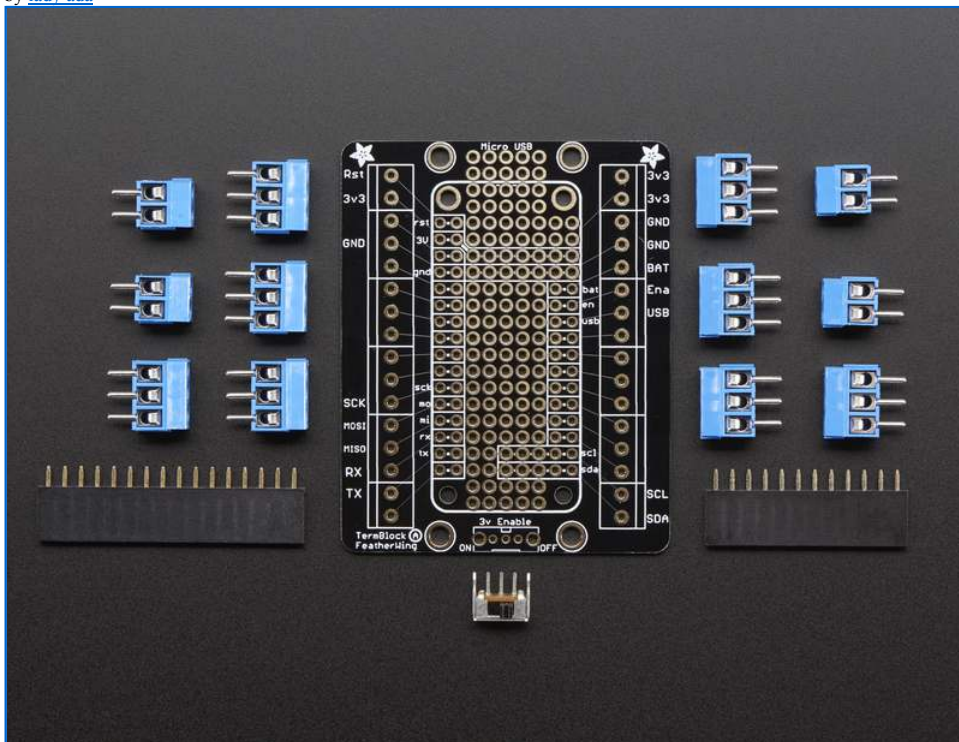
- USB power
- GND
- Reset
- I2C: SDA & SCL
- SPI: MOSI, MISO, SCK
- UART: RX & TX

Check your Feather documentation and product page for details on what other pins are available and what they are connected to

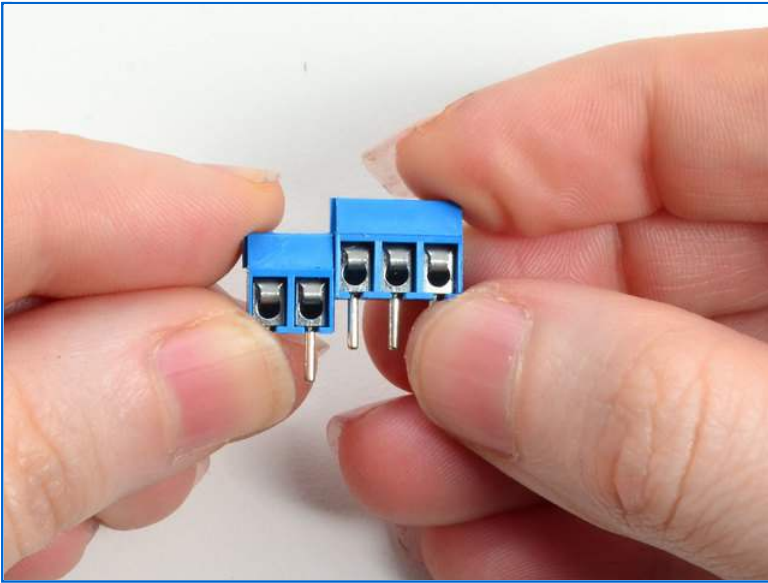


Assembly

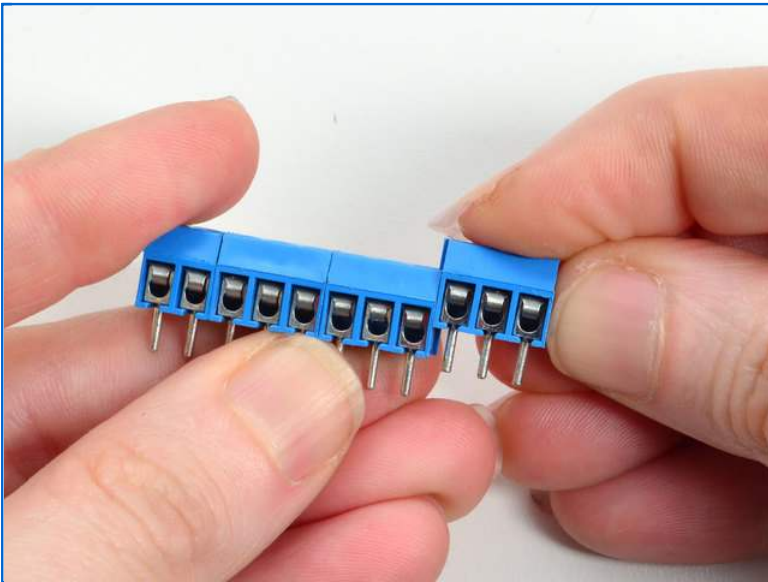
by [lady ada](#)



Start by grabbing the blue terminal blocks. Terminal blocks only come in 2 and 3 pin sizes, but can be slid together to form



longer strips. Start by connecting a 2 and 3 pin piece together. There's nubs on either side so line those up and you'll be able to slide them together

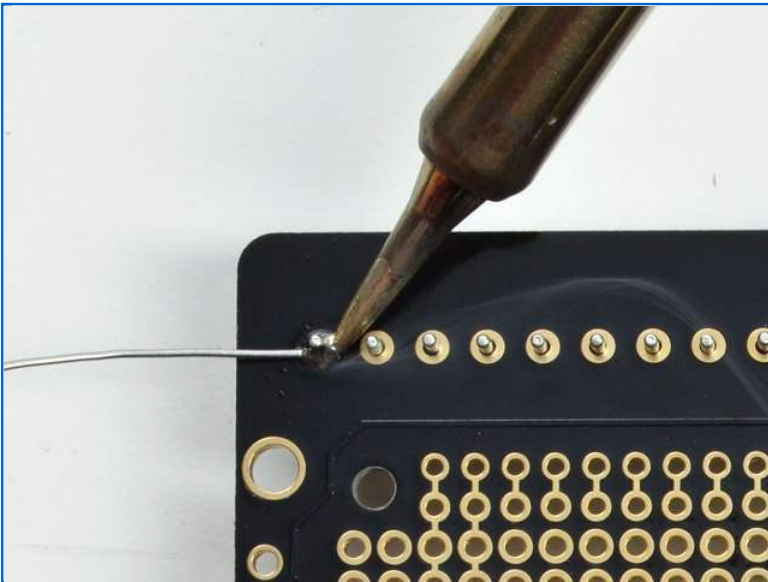
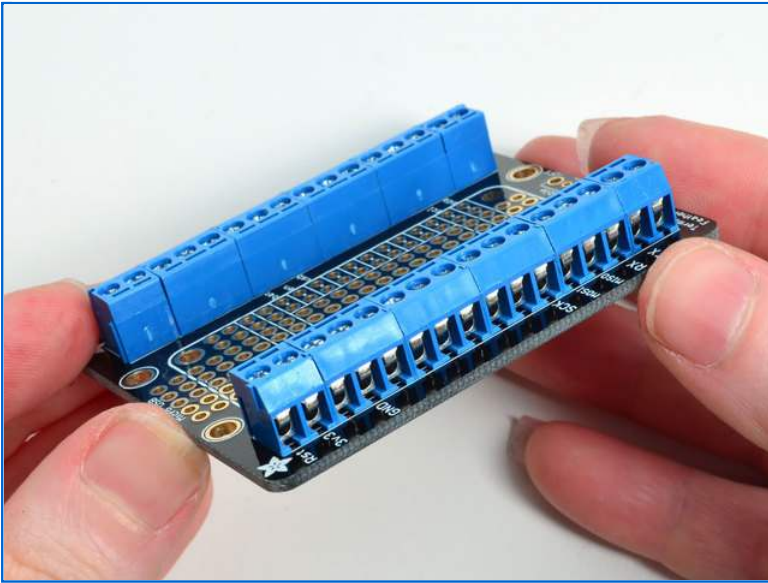


Keep sliding more 3-pin blocks on until you get a 2-pin block with four 3-pin blocks in the middle and then another 2-pin block at the end

Make two of these long strips



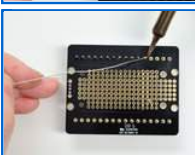
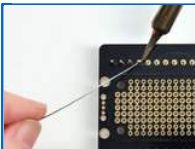
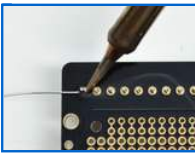
Place the two strips on either side of the breakout PCB with the terminal block holes facing out



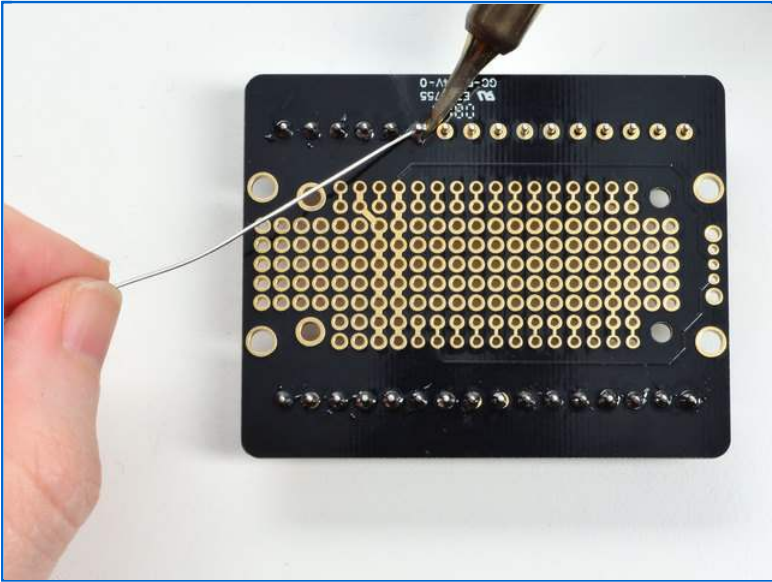
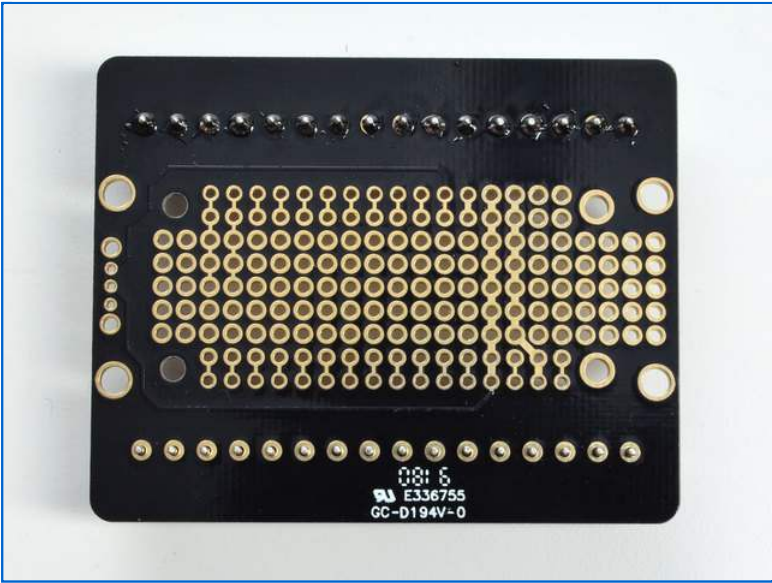
Flip over the board and solder in all of the terminal block pins with plenty of solder

Be sure to solder all pins for reliable electrical contact.

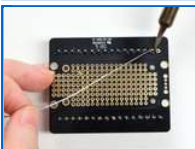
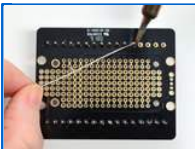
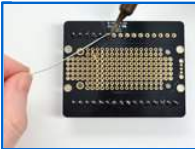
(For tips on soldering, be sure to check out our [Guide to Excellent Soldering](#)).

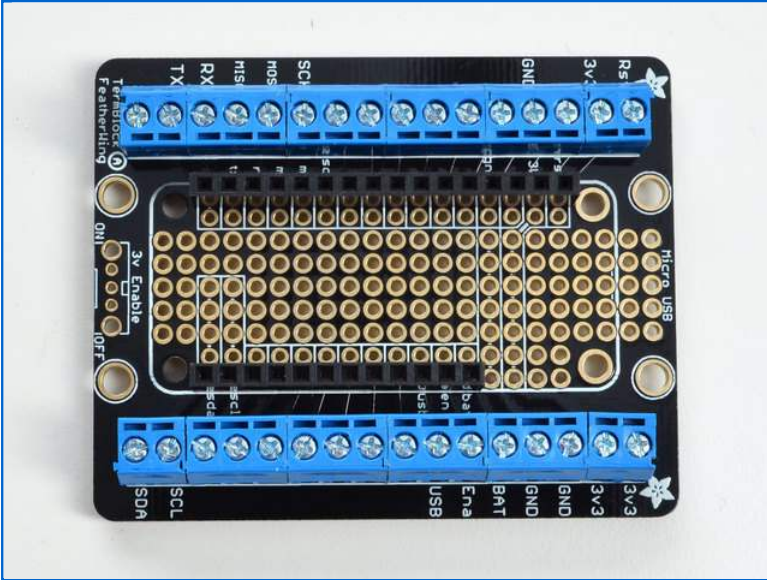
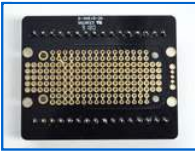


Check the first row once its done, to make sure each pin is shiny and completely soldered

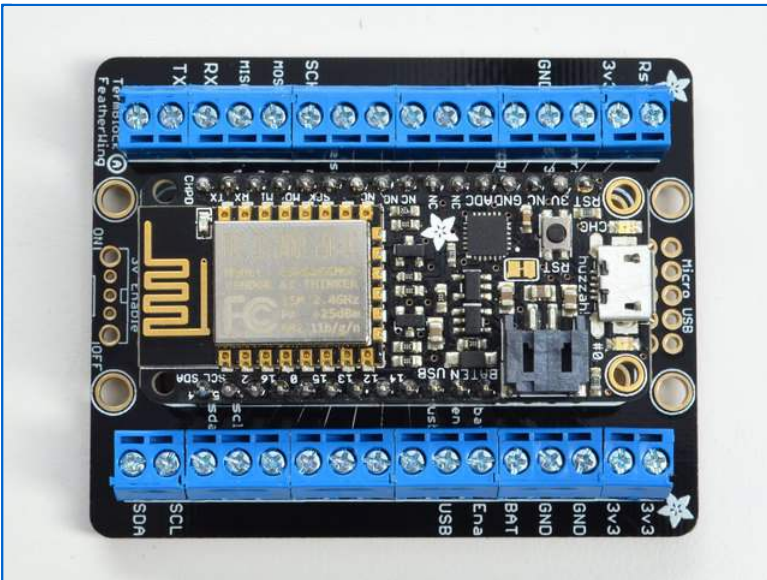


Do the other row of terminal blocks



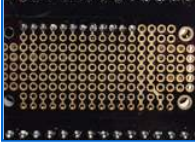
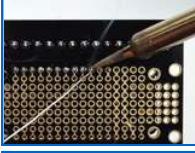
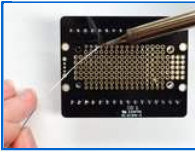
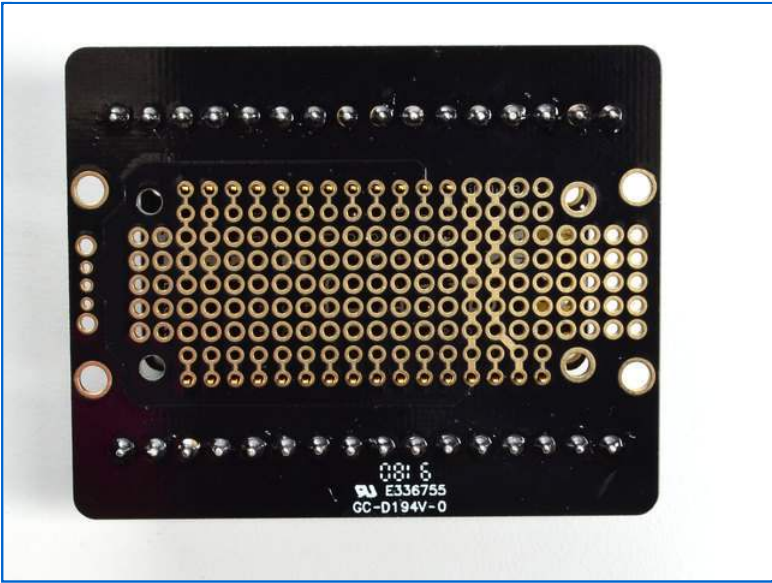


Next up place the 12-pin and 16-pin headers in the center part of the breakout in the outer-most set of holes

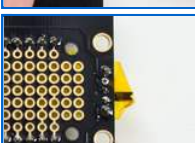
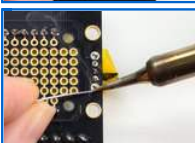
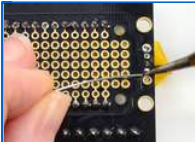
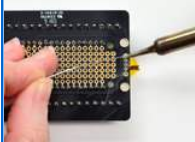
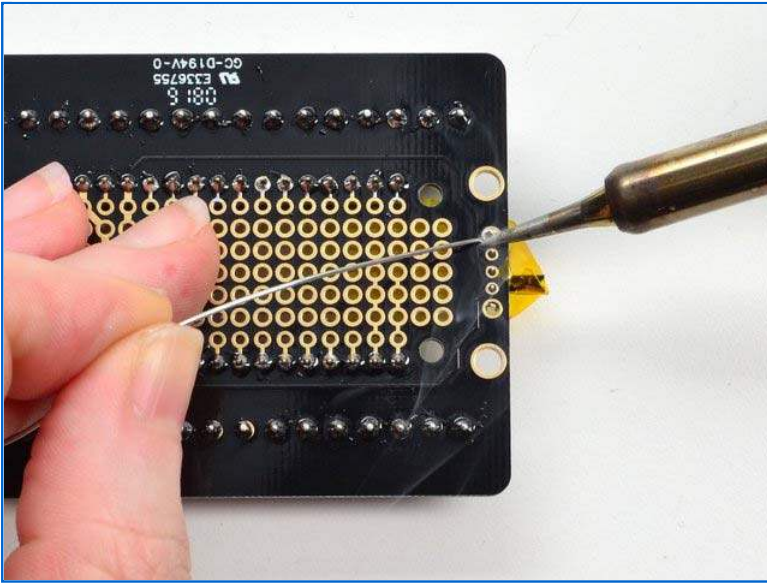


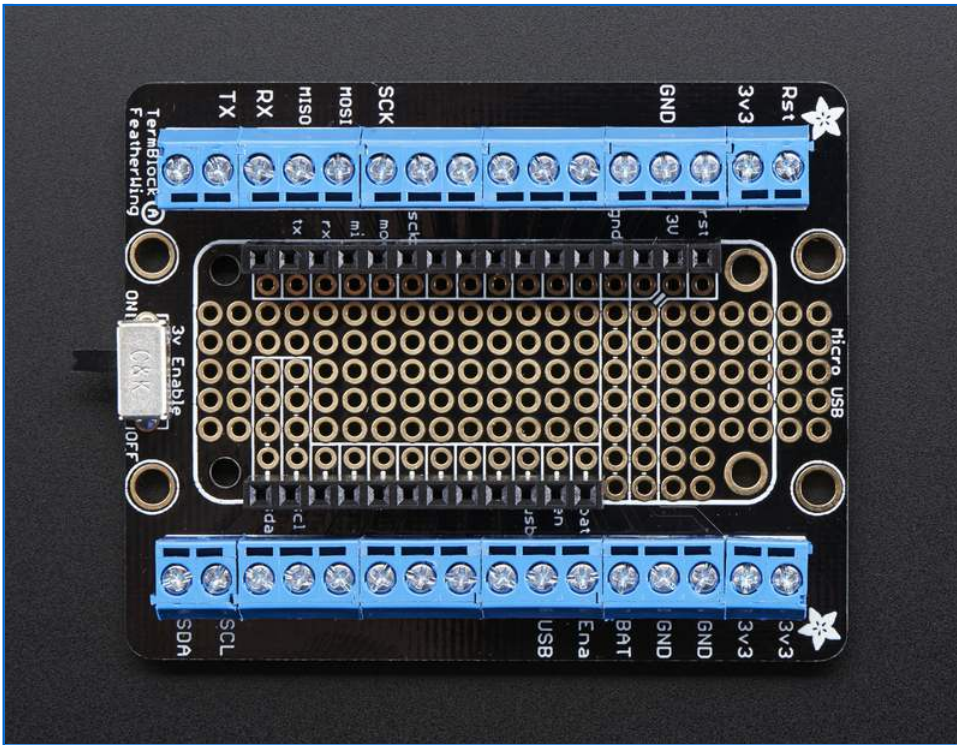
If you have a Feather, plugging it into the headers will keep them nicely aligned so you dont need to tape them in place

Flip over and solder in one row of the header



Solder in the other row of header





Downloads

by [lady_ada](#)

Datasheets

[OS102011MA1QS1 slide switch](#)

Schematic

