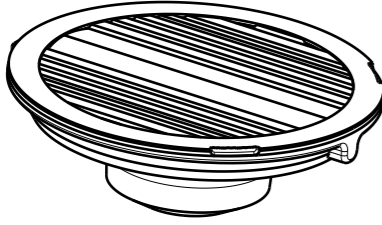
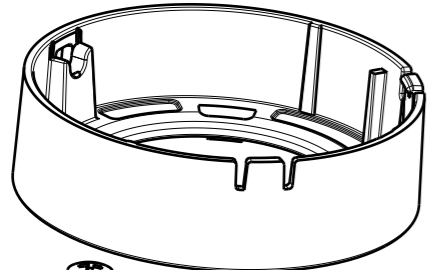


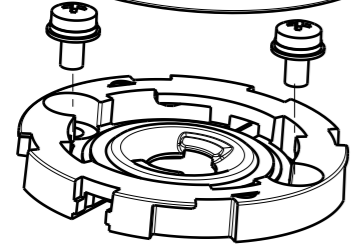
4



Ronda optics



F15635\_RONDA-HLD-C

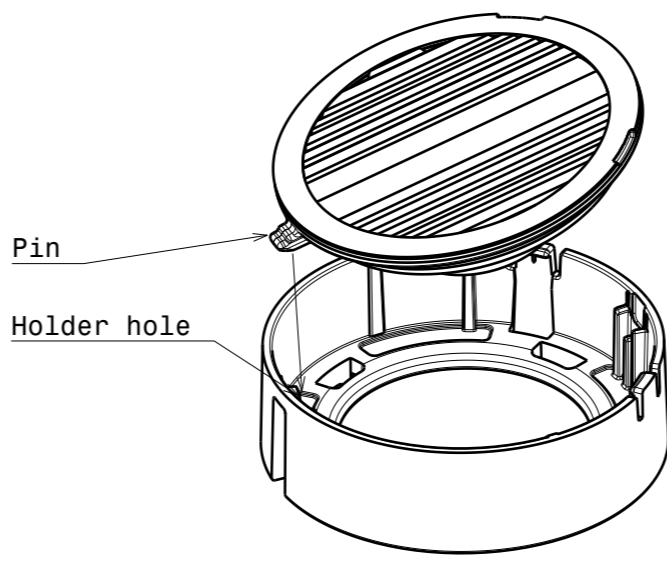


M3 screw+washer

Hekla socket, see compatibility [www.ledil.com](http://www.ledil.com)



Led, see compatibility [www.ledil.com](http://www.ledil.com)

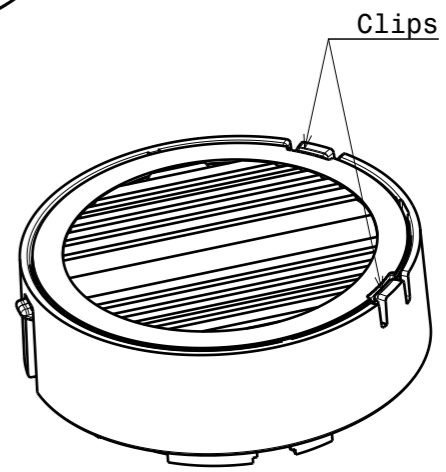
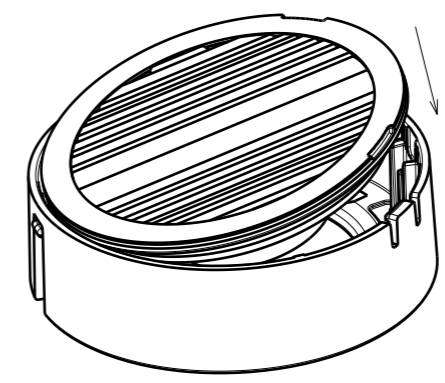


Pin

Holder hole

OPTIC/HOLDER ASSEMBLY

1. Place pin on the side of the lens into relative hole on the holder.
2. Press the lens under clips on the holder, ensuring both clips are fixed.



Clips

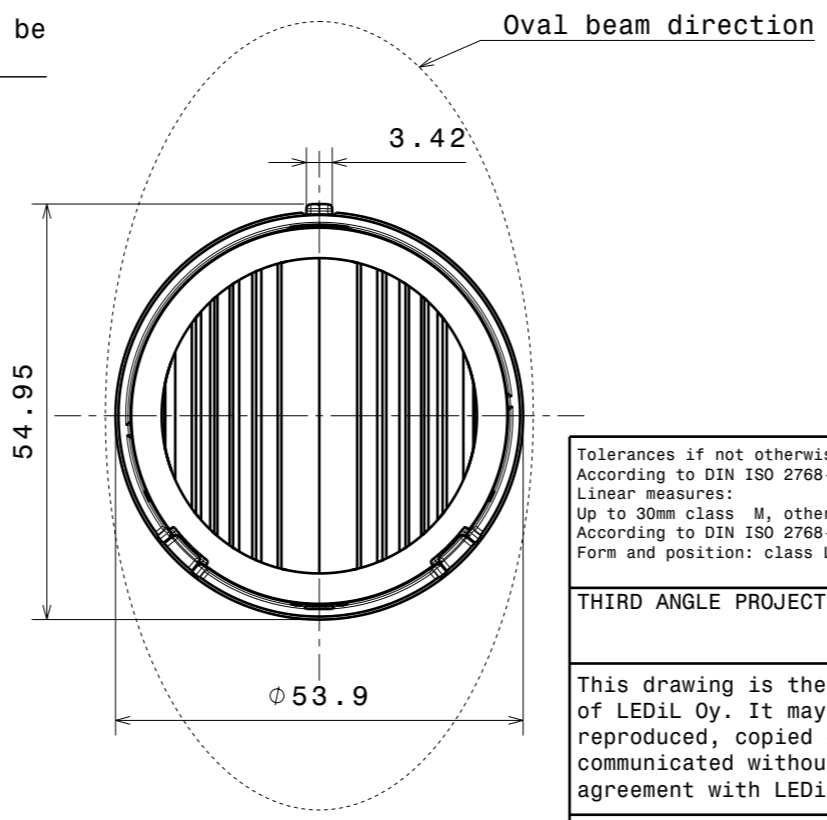
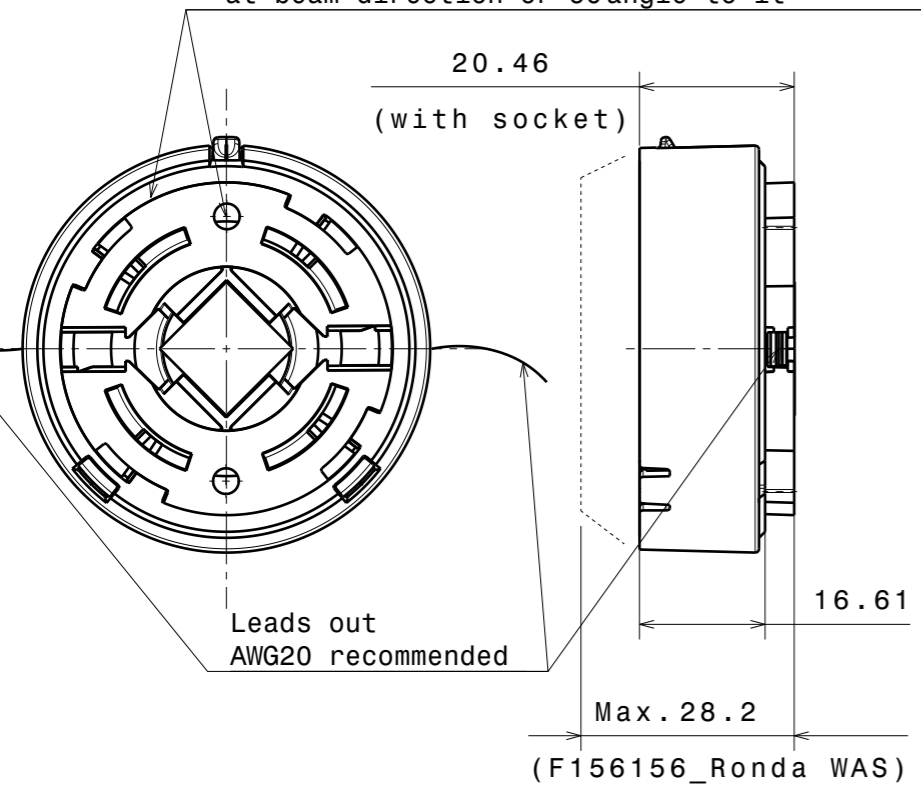
3

3

2

2

Holder C can be turned 90°->fixing screw can be at beam direction or 90°angle to it



Tolerances if not otherwise shown  
According to DIN ISO 2768-1  
Linear measures:  
Up to 30mm class M, otherwise class C.  
According to DIN ISO 2768-2  
Form and position: class L

**LEDiL** Ledil Oy  
Salorankatu 10  
FIN 24240 SALO  
Finland

THIRD ANGLE PROJECTION:

DRAWING TITLE  
**RONDA-C\_Datasheet**

This drawing is the property of LEDiL Oy. It may not be reproduced, copied or communicated without a written agreement with LEDiL Oy.

SIZE	PART NUMBER		
<b>A3</b>			

SCALE	1:1	WEIGHT		SHEET	1/1
-------	-----	--------	--	-------	-----

1

1