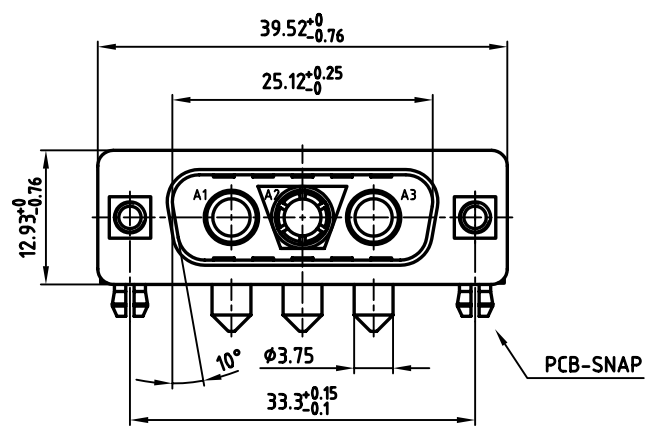
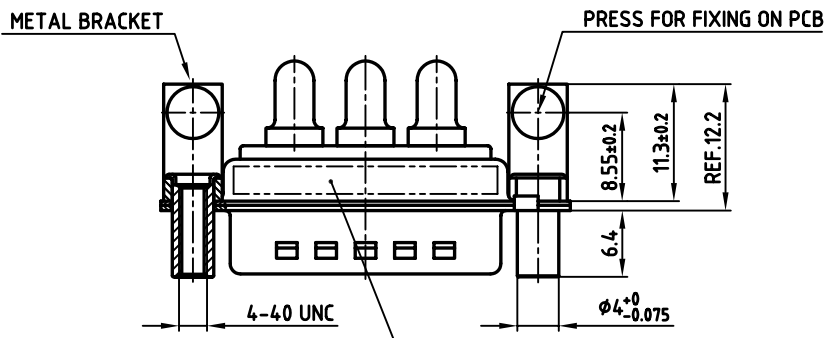


P.C.B.-HOLE DRILLINGS (b)

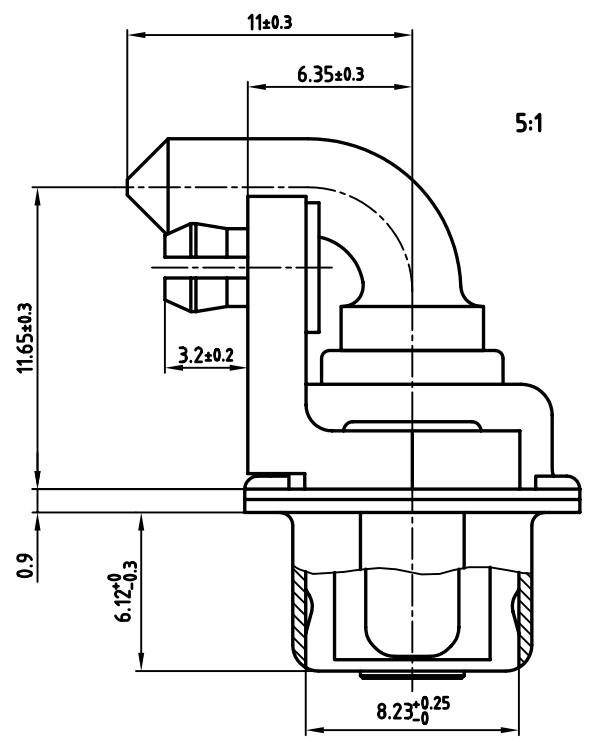


PCB-SNAP

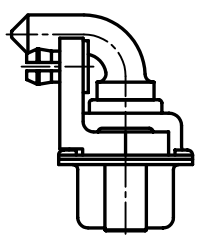


SEE NOTE 8

used for: D-SUB COMBINATION

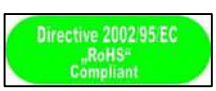


5:1



NOTES:

- METALSHELLS: STEEL; min. 315µm TIN over 40-80µm NICKEL
- INSULATORS: PBT GF UL 94 V-0, GREEN
- HIGH POWER CONTACTS 40A: COPPER ALLOY
PLATING MATING AREA: 30µm HARD GOLD OVER min. 50µm NICKEL
PLATING TERMINATION SIDE: 160-240µm TIN OVER 80µm NICKEL
MALE CONTACT ON POS. A1 + A3
FEMALE CONTACT ON POS. A2
- METAL BRACKET: ZINC DIE CAST; 300µm COPPER/40-120µm NICKEL/120-200µm TIN
- THREADED LOCK: COPPER ALLOY; min. 200µm TIN over 80µm NICKEL
- PCB-SNAP: COPPER ALLOY; min. 200µm TIN over 80µm NICKEL
PCB-HOLE: 3.1 ± 0.1; PCB THICKNESS 1.6mm
- MAXIMUM TORQUE VALUE FOR THREAD: 6 in.LB
- CONNECTOR IS PART MARKED: 303W3CPXX58P40X CONEC ABC



APPROVAL # FREIGABE # DEBLOCAGE # AUTORIZACION # APPROVAL	
CUSTOMER APPROVAL DATE:	
NAME:	TITLE:
COMPANY NAME:	
APPROVAL # FREIGABE # DEBLOCAGE # AUTORIZACION # APPROVAL	

THIS DRAWING MAY NOT BE COPIED OR REPRODUCED IN ANY WAY, AND MAY NOT BE PASSED ON TO A THIRD PARTY, WITHOUT WRITTEN PERMISSION. OWNERSHIP AND COPYRIGHT OF CONEC Gmbh DO NOT ALTER CAD DRAWING BY HAND

rev.	description	date	name
1 x b	Ä 2580	02.10.2006	Lehmen
a	Origin		

tolerance		scale:	2:1 (5:1)
	dim. in mm	material:	SEE NOTES
2002	date	name	title:
drawn	16.05.	E. Mickenbecker	D-SUB COMBINATION MALE 90°
appd.	16.05.	J. Resonnek	3W3CP
norm			with threaded lock, metal bracket and snap
d-old			dwg no: AutoCAD 2000 DIN-A
			3
			sh: 1/1

part no: 303W3CPXX58P40X	
--------------------------	--