

CABLE 320 RF: RF CABLE ASSEMBLY, I-PEX MHF I LK PLUG + SMA STRAIGHT BULKHEAD JACK + MULTIPLE CABLE OPTIONS - 3GHz

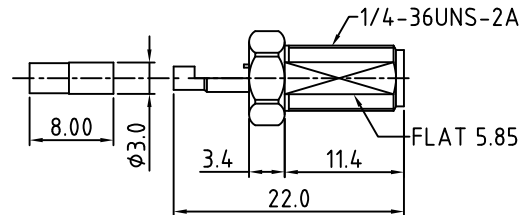
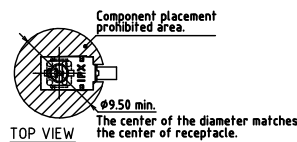
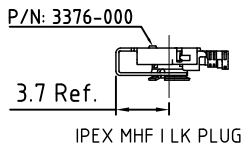
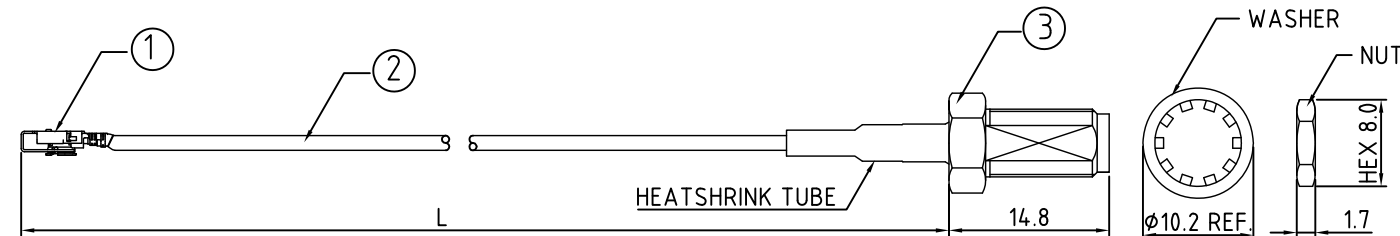
SPECIFICATIONS:

1. I-PEX MHF I LK PLUG, P/N:
 - Ø1.37MM CABLE: 20670-001R-37 + 3376-000
 - Ø1.13MM CABLE: 20670-001R-13 + 3376-000
 - RG178 CABLE: 20670-001R-18 + 3376-000
2. COAXIAL CABLE, SEE P/N OPTION FOR DETAIL.
3. SMA STRAIGHT BULKHEAD JACK, GOLD. P/N: RFCT-SMA010-F78.

USAGE PRECAUTIONS: CABLES USING 'MICRO' COAX ARE DELICATE:
 (i) HANDLE WITH CARE.
 (ii) DO NOT TWIST; APPLY EXCESSIVE FORCES OR SHARP BENDS TO THE CABLE. DO NOT FORCEFULLY DEFORM WIRES.
 (iii) CONSULT CONNECTOR MANUFACTURER'S DATASHEETS FOR DETAILED NOTES ON HANDLING INSTRUCTIONS.

NOTES:

1. THE ORIENTATION OF CONNECTORS ON DRAWING IS FOR REFERENCE ONLY, IF THE ORDER IS LEFT BLANK THE CONNECTOR WILL NOT HAVE FIXED ORIENTATION.
2. FIXED ORIENTATION IS SUGGESTED FOR CABLE LENGTH 25MM TO 100MM. PLEASE SPECIFY THE FIXED ORIENTATIONS FROM THE ORDER CODE (F1, F2, ETC)
3. CONTACT GRAD CONN IF THE ORIENTATION YOU REQUIRE IS NOT SHOWN.
4. WORKING FREQUENCY RANGE: DC-3GHz.
5. OPERATING TEMPERATURE: -40°C TO +85°C.
6. IMPEDANCE: 50 OHM.



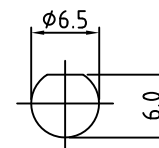
HOW TO ORDER
 CABLE 320 RF - X X X - X X - X - X

"L" LENGTH IN MM
 eg: 100MM = 100
 (MIN. = 025, MAX. = 400)
 STANDARD = 100, 150, 200)
 Tolerance: <50mm : ±2mm.
 51-200mm: ±5mm.
 201-400mm: ±7mm.

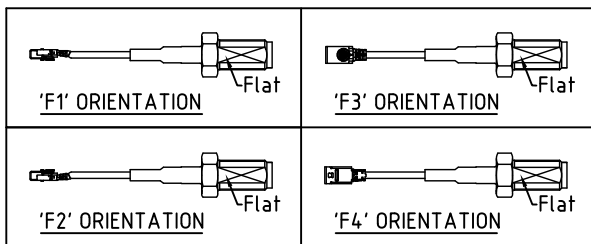
CABLE SIZE OPTIONS:
 1 = Ø1.37MM CABLE, COLOR: BLACK
 2 = Ø1.13MM CABLE, COLOR: GRAY (NON-STANDARD)
 3 = RG178 CABLE, COLOR: BROWN (NON-STANDARD)

WASHER AND NUT OPTIONS:
 BLANK = SEPERATELY PACKED (STANDARD)
 A = ASSEMBLED WITH CONNECTOR

ORIENTATION OPTIONS:
 BLANK = DOES NOT HAVE A FIXED ORIENTATION
 F1 = MHF CONNECTION DOWN (L=25-200MM)
 F2 = MHF CONNECTION UP (L=25-200MM)
 F3 = MHF CONNECTION AND D FLAT SAME ORIENTATION (L=50-200MM)
 F4 = MHF CONNECTION AND D FLAT OPPOSITE ORIENTATION (L=50-200MM)
 (SEE NOTES 1, 2, 3 AND DIAGRAMS FOR MORE INFORMATION)



RECOMMENDED SMA MOUNTING HOLE



REV. DATE & DRN	10/27/07/18 - NYW RELEASE
11	20/07/20 - NYW
12	27/07/20 - NYW
13	29/09/20 - NYW
14	03/12/20 - NYW
15	21/02/21 - NYW
16	27/07/22 - NYW
17	05/07/23 - CC

Scale:	NTS	THIRD ANGLE	Unstated .X .XX .XXX ANGLES	Tolerances: N/A N/A N/A N/A	Material SEE NOTE
Drawn:	CC				
App'd:	XXX	Title	CABLE ASSEMBLY		NOT TO SCALE
Date:	5 JUL. '23	Revision:	1.7		Unit: mm

GRADCONN
www.gradconn.com

THIS DRAWING IS CONFIDENTIAL AND MUST NOT BE COPIED OR DISCLOSED WITHOUT WRITTEN CONSENT

Type:	Cable 320 RF
	CABLE 320 RF
Drawing Number:	Sheet 1 of 1
Drawing	E and O E