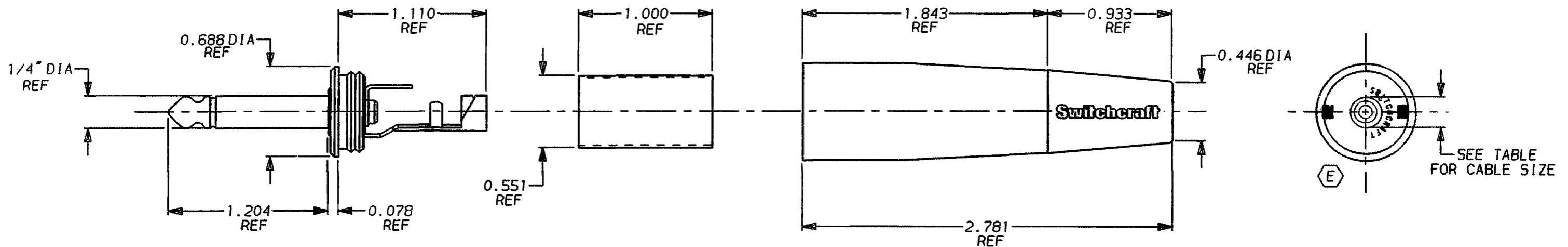
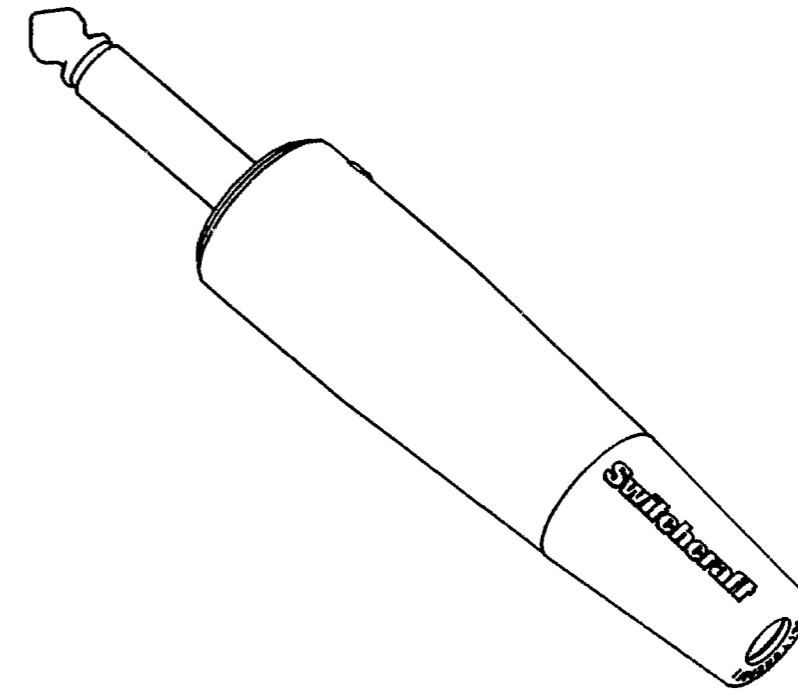


E			
PART NO.	PART REV.	HANDLE FINISH	CABLE SIZES
187D	E	NICKEL PLATE	0.200 TO 0.300 O.D.
187	F	NICKEL PLATE	0.300 TO 0.330 O.D.
187L	D	NICKEL PLATE	0.330 TO 0.355 O.D.
187BD	E	BLACK EPOXY COATING	0.200 TO 0.300 O.D.
187B	H	BLACK EPOXY COATING	0.300 TO 0.330 O.D.
187BL	D	BLACK EPOXY COATING	0.330 TO 0.355 O.D.

**PLUG SPECIFICATIONS:****MATERIALS:**

CONDUCTORS: BRASS NICKEL PLATED
 INSULATORS: XXXP PHENOLIC, GRADE LE PHENOLIC AND PPO
 TERMINALS: BRASS, ELECTRO TIN PLATED
 MAXIMUM WIRE SIZE: 14 AWG.

INSULATOR SPECIFICATIONS:

MATERIALS: MYLAR

HANDLE AND FLEX RELIEF SPECIFICATIONS:

MATERIALS:
 HANDLE: ZINC (SEE TABLE FOR FINISH)
 FLEX RELIEF: THERMOPLASTIC ELASTOMER

NOTES:

1. PLUG SUBASSEMBLY AND HANDLE SUBASSEMBLY ARE PACKED SEPARATELY IN THE SAME CONTAINER.

CUSTOMER DRAWING

CAD/CAM DWG. NO.
187.CD

SHEET 1 OF 1

					★ STAR SYMBOL DENOTES CRITICAL DIMENSION, SEE S/C ENGINEERING STANDARD ES-0001	THIS DRAWING DESCRIBES A DESIGN CONSIDERED PROPRIETARY IN NATURE, DEVELOPED AND MANUFACTURED BY SWITCHCRAFT INC. AND IS RELEASED ON A CONFIDENTIAL BASIS FOR IDENTIFICATION PURPOSE ONLY.				
					UNLESS OTHERWISE SPECIFIED	SIZE	WIDTH	MULT	LBS./IN	TEMPER
E	ECO #20751	3-22-96	RC	KS	1. ALL DIMENSIONS IN INCHES TWO PLACE DECIMAL ±.01 THREE PLACE DECIMAL ±.005 FRACTIONAL DIMENSIONS ±1/64 ANGLES ±1/2° ALL DIA'S CONCENTRIC WITHIN .005 T.I.R. 2. REMOVE ALL BURRS 3. MAKE NO DIMENSIONAL ALLOWANCES FOR APPLIED FINISHES, I.E., PLATING, PAINTING, ETC. 4. HOLES ON THE SAME CENTERLINE MUST BE ALIGNED WITHIN ±.002	FINISH		MATERIAL		
D	ECO #20697	3-22-96	RC	KS		SPEC. NO.		SPEC. NO.		
C	ECO #20627	3-22-96	RC	KS		FIRST USED ON		SCALE 1 = 0.750		
B	ECO #20063	3-19-96	RC	KS		DATE DRAWN 9-9-92	BY LR	CHK'D MW 9-17-92	APP'D GHJ 9-17-92	Switchcraft®
A	FIRST DRAWN	9-9-92	LR	GHJ		NAME PHONE PLUGS				
ISSUE	CHANGE NO.	DATE	BY	APP'D	PART NO. 187 SERIES				ISSUE E	

REVISIONS

DO NOT SCALE DRAWING