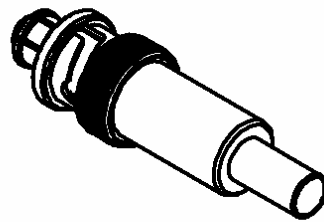
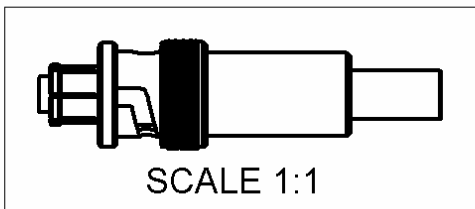
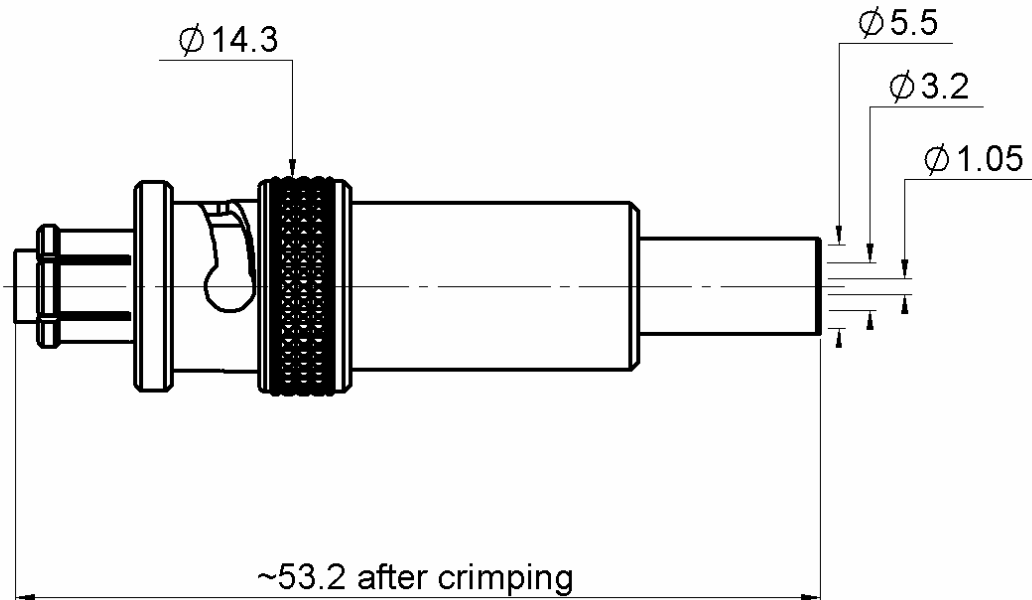


STRAIGHT PLUG CRIMP CABLE

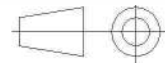
R317.072.000

5/50 S-TR

Series : SHV



All dimensions are in mm.



COMPONENTS	MATERIALS	PLATING (µm)
BODY	BRASS	NICKEL
CENTER CONTACT	BERYLLIUM COPPER	GOLD OVER NICKEL
OUTER CONTACT	BERYLLIUM COPPER	NICKEL
INSULATOR	PTFE	
GASKET	SILICONE	
OTHERS PARTS	BRASS	NICKEL
-	-	-
-	-	-

Issue : 1102 J

In the effort to improve our products, we reserve the right to make changes judged to be necessary.



STRAIGHT PLUG CRIMP CABLE

R317.072.000

5/50 S-TR

Series : SHV

PACKAGING

Standard	Unit	Other
1	-	Contact us

SPECIFICATION

ELECTRICAL CHARACTERISTICS

Impedance		50 Ω
Frequency		0-2 GHz
VSWR	1.2 +	0,3000 x F(GHz) Maxi
Insertion loss		TBD √F(GHz) dB Maxi
RF leakage	- (NA - F(GHz)) dB Maxi
Voltage rating		* Veff Maxi
Dielectric withstanding voltage		10000 Veff mini
Insulation resistance		5000 MΩ mini

CABLE ASSEMBLY

Stripping	a	b	c	d	e	f
mm	3,50	6,50	0,00	26,8	0,00	0,00

Assembly instruction :

Recommended cable(s)
 RG 58
 KX 15

Characteristics indicated on this data sheet are those that can be achieved with the highest performance cable. Intrinsic limitations of the cable may diminish the performance of the assembly

Cable retention

- pull off **180** N mini
- torque - N.cm

MECHANICAL CHARACTERISTICS

Center contact retention		
Axial force – Mating end	27	N mini
Axial force – Opposite end	27	N mini
Torque	-	N.cm mini

TOOLING

Part Number	Description	Hexagon
.	.	.
R282.223.000	CRIMPING TOOL	Hex 1.7(CC) Hex 5.4

Recommended torque		
Mating	-	N.cm
Panel nut	-	N.cm
Clamp nut	-	N.cm
A/F clamp nut	0,0000	mm

OTHER CHARACTERISTICS

- * 6000 V eff (DC)
- * 3500 V rms (AC)

Mating life	500	Cycles mini
Weight	21,0000	g

ENVIRONMENTAL

Operating temperature	-65/+165	° C
Hermetic seal	NA	Atm.cm3/s
Panel leakage	NA	

Issue : 1102 J

In the effort to improve our products, we reserve the right to make changes judged to be necessary.



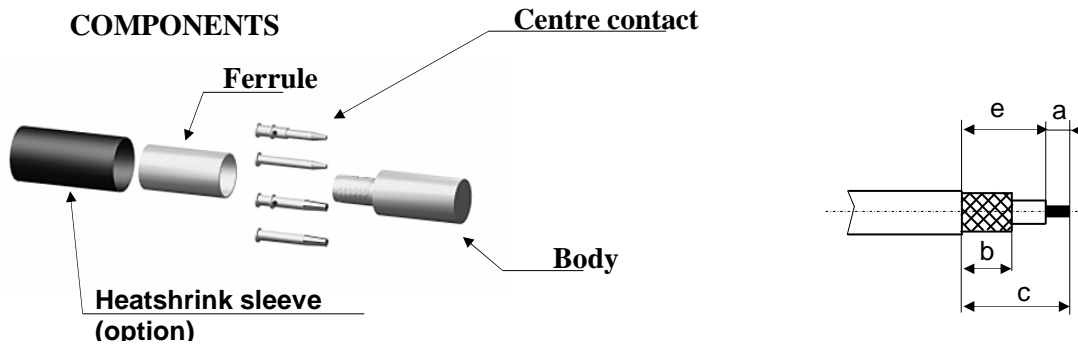
STRAIGHT PLUG CRIMP CABLE

5/50 S-TR

R317.072.000

Series : SHV

COMPONENTS



1

Slide the heatshrink sleeve onto the cable (Option).
Slide the ferrule onto the cable.
Strip the cable.

4

Slide the cable into the body until it bottoms against the insulator.

2

Slide the centre contact on until it bottoms against the cable dielectric.
Solder the centre contact.
Clean solder area.

5

Slide the ferrule over the braid.
Crimp the ferrule with crimping tool (see connector TDS).

3

Fan the braid.

6

Cut the excess of braid if necessary.
Slide the sleeve over the ferrule and heatshrink it in place (Option).

Issue : 1102 J

In the effort to improve our products, we reserve the right to make changes judged to be necessary.

