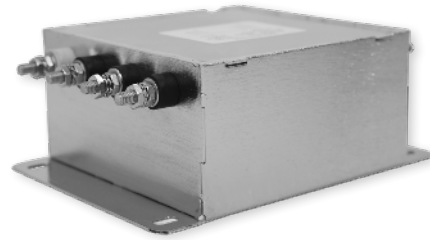


RPM8000

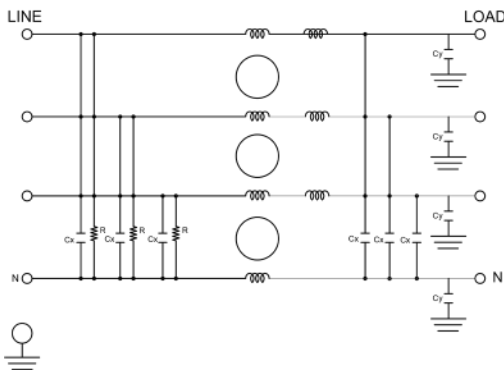
MIL/COTS 3-PHASE **WYE** EMI POWER LINE FILTER

FEATURES

- » Rated currents include **5A, 10A, 20A, 30A, 50A, 80A, 125A and 150A**
- » Dual Stage Line Filter
- » Available with **S** (studs)
- » Agency Approved to RoHS
- » Y-cap value can be adjusted to fit specification



ELECTRICAL SCHEMATIC



HOW TO ORDER

RPM8000 - Y - Z

Z = TERMINAL (-T)
X = RATED CURRENT

RPM8000=FILTER SERIES

NOTE: USE ANY COMBINATION OF -X (AMPS) WITH ANY -Y RATINGS
E.G. **RPM8000-10-S**(10 AMPS)

For **X** and **Y** options see product specification table.

SPECIFICATIONS

OPERATING FREQUENCY	50/60/400 Hz
MAX. OPERATING VOLTAGE	480 VAC +10%
AMBIENT TEMPERATURE	-40 TO 70°C
CLIMATIC CATEGORY	25/100/21
TERMINALS (-T)	STUDS: 5-50A (M5), 80A (M6), 125-150A (M10)

TYP. WEIGHT, LBS (KG) 2.7-35(1.22-15.87)

TYPICAL LEAKAGE CURRENT

@ 480 VAC 60 Hz 0 - 3.50 mA Max.

HIPOT RATINGS

LINE TO GROUND 1800 VDC

TYPICAL APPLICATIONS

- ✓ Mil-461/ DO-160

NOTE:

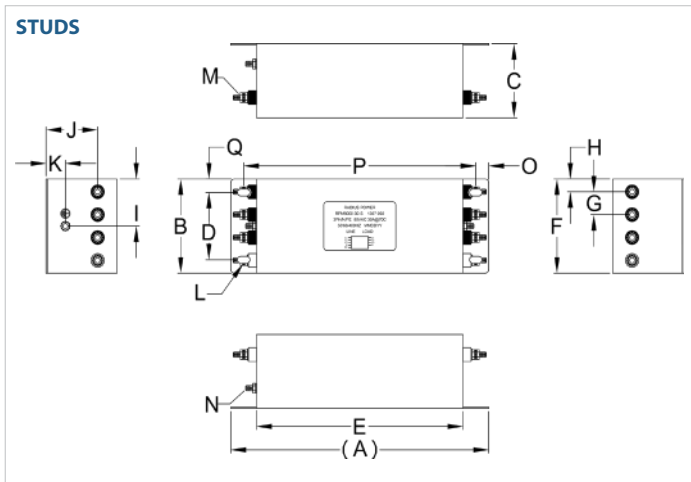
- ✓ Call for other termination types (e.g. Circular Mil-Connector, etc.)

RPM8000

MIL/COTS 3-PHASE WYE EMI POWER LINE FILTER

MODEL NO.	RATED CURRENT, A @ 40° C	LEAKAGE CURRENT, mA @ 480V AC, 60 Hz	TERMINAL OPTIONS			MAX. DIMENSIONS" (MM)		
			(QD) INPUT/ OUTPUT	(W) INPUT/ OUTPUT	(S) INPUT/ OUTPUT	WIDTH	(LENGTH)	HEIGHT
RPM8000-5-S	5	3.50			✓	4.25"(108)	6.06"(154)	2.25"(57)
RPM8000-10-S	10	3.50			✓	4.25"(108)	6.06"(154)	2.25"(57)
RPM8000-20-S	20	3.50			✓	4.00"(102)	6.76"(172)	2.75"(70)
RPM8000-30-S	30	3.50			✓	3.50"(89)	10.00"(254)	2.75"(70)
RPM8000-50-S	50	3.50			✓	3.90"(99)	12.36"(314)	3.25"(83)
RPM8000-80-S	80	3.50			✓	6.60"(168)	12.00"(305)	4.50"(114)
RPM8000-125-S	125	3.50			✓	9.60"(244)	17.00"(432)	4.50"(114)
RPM8000-150-S	150	3.50			✓	9.60"(244)	17.00"(432)	4.50"(114)

RPM8000 MECHANICAL OUTLINES (MM)



SERIES	(A)	B	C	D	E	F	G	H	I	J	K	L	M	N	O	P	Q
STUDS (5/10A)	6.06" (154)	4.25" (108)	2.25" (57)	3.50" (89)	4.25" (108)	4.25" (108)	0.90" (23)	0.75" (19)	2.13" (54)	1.80" (46)	0.75" (19)	Ø 0.40"x0.20", 4x Ø 10.2x5.1, 4x	STUD, M5, 8x	STUD, GND, M5	0.37" (10)	5.00" (127)	0.38" (10)
STUDS (20A)	6.76" (172)	4.00" (102)	2.75" (70)	3.25" (83)	5.00" (127)	4.00" (102)	1.00" (25)	0.50" (13)	2.00" (51)	2.20" (56)	1.00" (25)	Ø 0.40"x0.20", 4x Ø 10.2x5.1, 4x	STUD, M5, 8x	STUD, GND, M5	0.45" (11)	5.80" (147)	0.38" (10)
STUDS (30A)	10.00" (254)	3.50" (89)	2.75" (70)	2.50" (64)	8.00" (203)	3.50" (89)	0.85" (22)	0.48" (12)	1.75" (44)	2.00" (51)	0.75" (19)	Ø 0.48"x0.25", 4x Ø 12.2x6.5, 4x	STUD, M5, 8x	STUD, GND, M5	0.50" (13)	9.00" (229)	0.50" (13)
STUDS (50A)	12.36" (314)	3.90" (99)	3.25" (83)	3.00" (76)	10.00" (254)	4.00" (102)	0.90" (23)	0.65" (17)	2.00" (51)	2.25" (57)	1.00" (25)	Ø 0.50"x0.25", 4x Ø 12.7x6.4, 4x	STUD, M6, 8x	STUD, GND, M6	0.50" (13)	11.00" (279)	0.45" (11)
STUDS (80A)	12.00" (305)	6.60" (168)	4.50" (114)	5.12" (130)	10.00" (254)	6.60" (168)	1.50" (38)	1.00" (25)	3.30" (84)	3.50" (89)	1.00" (25)	0.59"x0.25", 4x Ø 15.2x6.4, 4x	STUD, M6, 4x	STUD, GND, M6	0.50" (13)	11.00" (279)	0.74" (19)
STUDS (125/150A)	17.00" (432)	9.60" (244)	4.50" (114)	8.00" (203)	15.00" (381)	9.60" (244)	4.80" (122)	2.40" (61)	3.25" (83)	3.25" (83)	1.00" (25)	N/A	STUD, M10, 8x	STUD, GND, M10	0.50" (13)	16.00" (406)	0.80" (20)

TYPICAL TOLERANCE: +/-0.02" (0.50MM)

RPM8000

MIL/COTS 3-PHASE **WYE** EMI POWER LINE FILTER

TYPICAL INSERTION LOSS, dB (50/50 Ohm)

Amps	Freq (MHz)	0.15	0.5	1.0	10	30
5	CM (dB)	30	48	60	55	40
	DM (dB)	22	40	55	55	45
10	CM (dB)	30	48	60	55	40
	DM (dB)	22	40	55	55	45
20	CM (dB)	30	48	60	55	40
	DM (dB)	22	40	55	55	45
30	CM (dB)	30	48	60	55	40
	DM (dB)	22	40	55	55	45
50	CM (dB)	30	48	60	55	40
	DM (dB)	22	40	55	55	45
80	CM (dB)	30	48	60	55	40
	DM (dB)	22	40	55	55	45
125	CM (dB)	30	48	60	55	40
	DM (dB)	22	40	55	55	45
150	CM (dB)	30	48	60	55	40
	DM (dB)	22	40	55	55	45



RPM8000

MIL/COTS 3-PHASE **WYE** EMI POWER LINE FILTER



RPM8000

MIL/COTS 3-PHASE **WYE** EMI POWER LINE FILTER



RPM8000

MIL/COTS 3-PHASE **WYE** EMI POWER LINE FILTER



RPM8000

MIL/COTS 3-PHASE **WYE** EMI POWER LINE FILTER