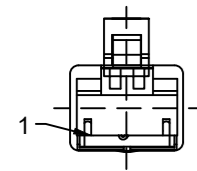
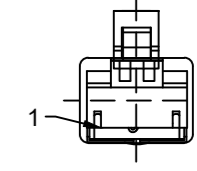


FRONT VIEW - MALE RJ45



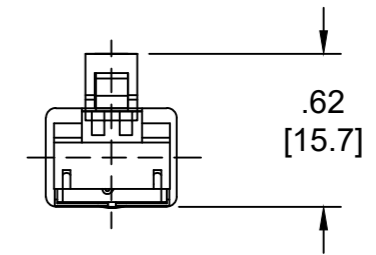
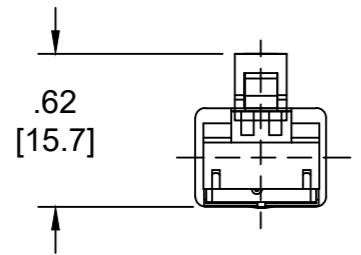
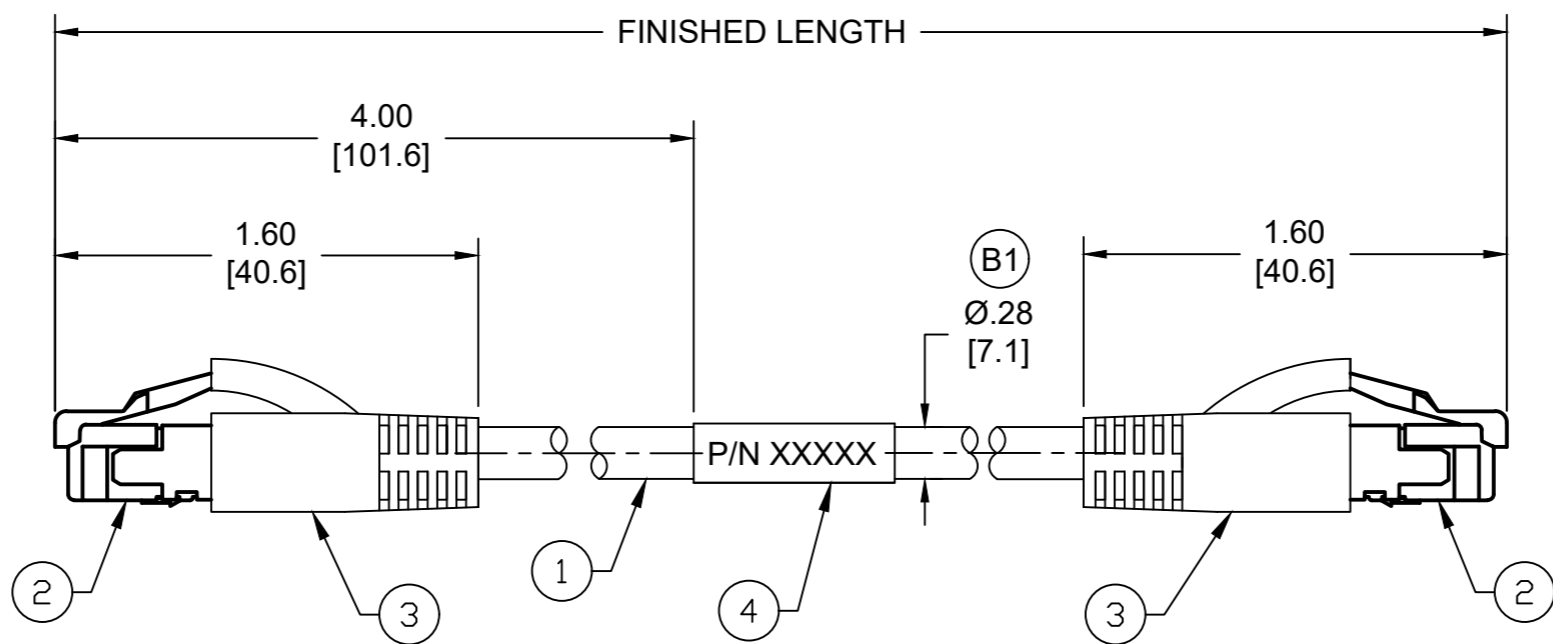
- 1-WHITE/ORANGE
- 2-ORANGE
- 3-WHITE/GREEN
- 6-GREEN

FRONT VIEW - MALE RJ45



- 1-WHITE/ORANGE
- 2-ORANGE
- 3-WHITE/GREEN
- 4-GREEN

| MATERIAL NUMBER | ENGINEERING NUMBER | FINISHED LENGTH |
|-----------------|--------------------|-----------------|
| 1201088186 | E66A06006M005 | 0.5M [1FT 8 IN] |
| 1201088179 | E66A06006M400 | 40M[131FT 3 IN] |
| 1201080448 | E66A06006M800 | 80M[262FT 6 IN] |



- NOTES:
1. MATERIAL: AS NOTED
 2. FINISH: AS NOTED
 3. ELECTRICAL:
VOLTAGE: 30V AC/DC
CURRENT: 1.5A
 4. TEMP RATING: -20°TO +75°C (B1)
 5. UL LISTED FILE: E361772 (B1)
 6. ALL DIMENSIONS ARE FOR REFERENCE UNLESS TOLERANCED OR NOTED OTHERWISE

PART NUMBER LEGEND
E66A06006M005

- FINISHED LENGTH
M005 - 0.5 METER
M010 - 1 METER
M200 - 20 METER

(B1) CABLE LENGTH TOLERANCES

| | |
|--------------------------|-------------------------|
| <.3M [1FT]: | +19mm-0 [+ .75in-0] |
| .3 - .9M [1 - 3FT]: | +44.5mm-0 [+1.75in-0] |
| .9 - 1.8M [3 - 6FT]: | +55.6mm-0 [+2.19in-0] |
| 1.8 - 3.7M [6 - 12FT]: | +88.9mm-0 [+3.50in-0] |
| 3.7 - 7.3M [12 - 24FT]: | +165.1mm-0 [+6.50in-0] |
| 7.3-14.6M [24 - 48FT]: | +317.5mm-0 [+12.50in-0] |
| 14.6 - 30.5M [48-100FT]: | +622.3mm-0 [+24.50in-0] |
| OVER 30M [100FT]: | +2% OF FINISHED LENGTH |

| ITEM | DESCRIPTION | MATERIAL | FINISH |
|------|-------------------------|---------------|-------------|
| 4 | WRAP LABEL | VINYL | BLACK/WHITE |
| 3 | RJ45 BOOT, HOODED | PVC | BLACK |
| 2 | RJ45 PLUG | POLYCARBONATE | TRANSPARENT |
| 1 | CABLE, ETHERNET, 24 AWG | TPE JACKET | BLUE |

| | | | | |
|---|---|--|--------------------------------------|--------------|
| FUNCTIONAL SYMBOLS F=0 C=0 P=0 | THIS DRAWING CONTAINS INFORMATION THAT IS PROPRIETARY TO MOLEX ELECTRONIC TECHNOLOGIES, LLC AND SHOULD NOT BE USED WITHOUT WRITTEN PERMISSION | | | |
| | DIMENSION UNITS | SCALE | | |
| | INCH/MM | NTS | EC NO: 703079 | |
| | GENERAL TOLERANCES (UNLESS SPECIFIED) | | DRWN: ABENJAMINLW 2021/10/29 | ETHERNET |
| 4 PLACES ±---- | | CHK'D: RSTONE 2022/04/12 | MALE RJ45/RJ45 #24-2P BLUE TPE CAT5E | |
| 3 PLACES ±---- | | APPR: BWOODMAN 2022/04/18 | PRODUCT CUSTOMER DRAWING | |
| 2 PLACES ±---- | | INITIAL REVISION: | DOCUMENT NUMBER | |
| 1 PLACE ±---- | | DRWN: BARDEN 2013/02/15 | SD-120108-054 | |
| 0 PLACES ±---- | | APPR: JFMURPHY 2013/04/18 | PSD 001 B1 | |
| ANGULAR TOL ± ---- ° | | DRAFT WHERE APPLICABLE MUST REMAIN WITHIN DIMENSIONS | THIRD ANGLE PROJECTION | SHEET NUMBER |
| | | | DRAWING B-SIZE | 1 OF 1 |
| | | | SERIES 120108 | |
| | | | MATERIAL NUMBER SEE CHART | |
| | | | CUSTOMER GENERAL MARKET | |