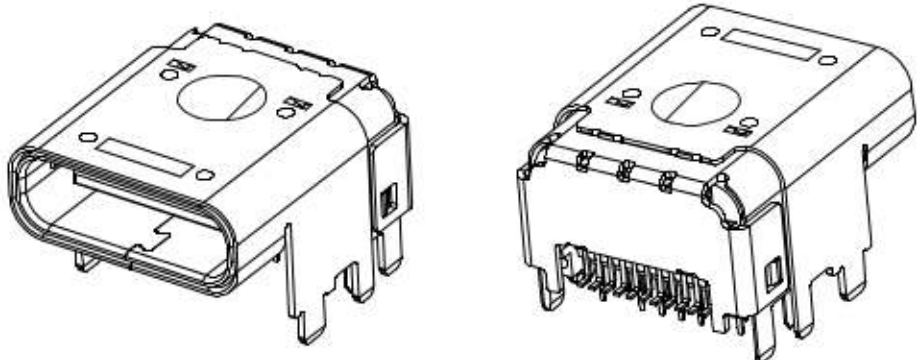
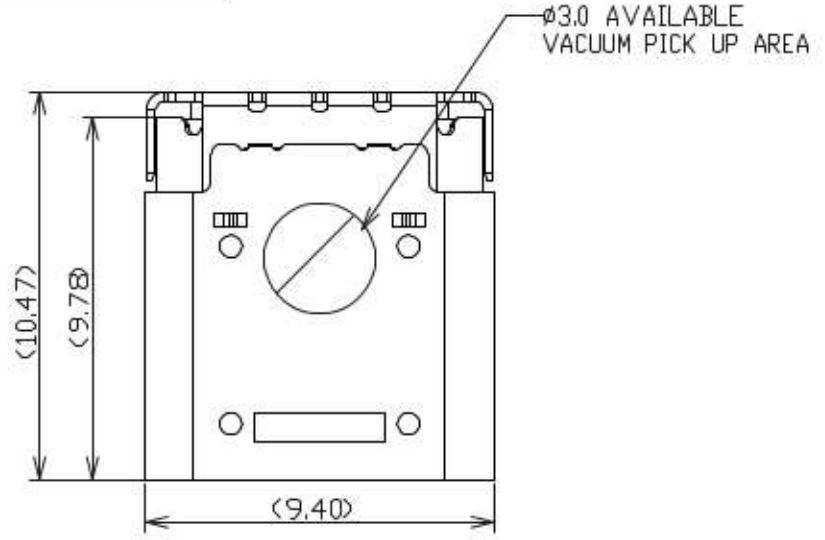


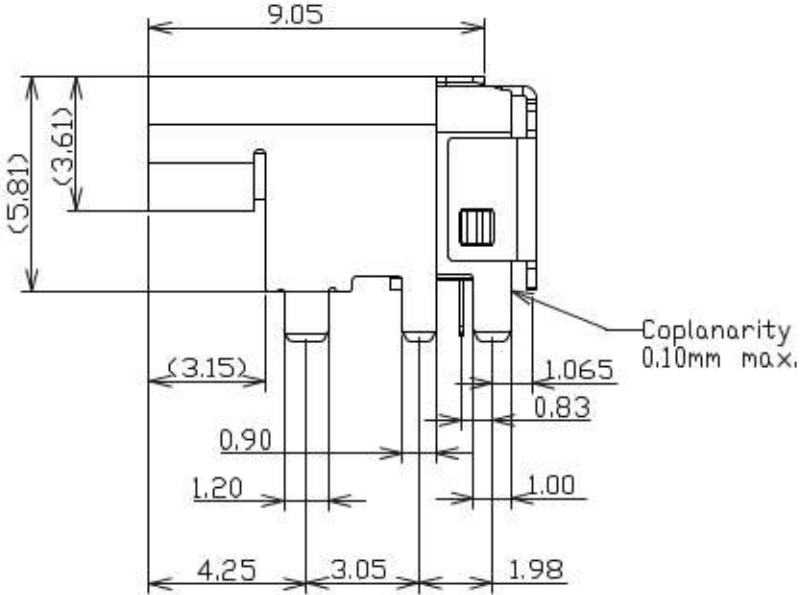
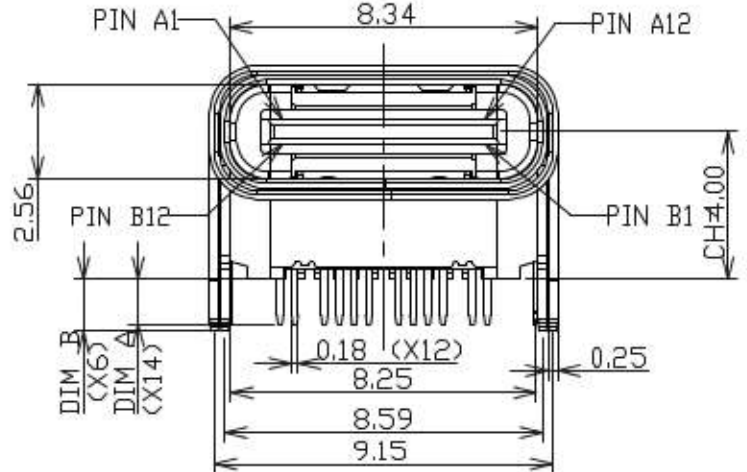
HALOGEN FREE

REV.	EC#	DESCRIPTION	DATE	DRAWN	CHECKED	APPROVED
X2	SZECRI4457	NEW RELEASE	8/09/18'	Alr.Chen	Alan.Tsal	



PRODUCT NUMBERING CODE  
 C-ARA1 - A K X X X  
 ① ② ③ ④ ⑤ ⑥

- 1.CONNECTOR TYPE:  
ARA1: USB TYPE-C FULL FEATURE CONN. RECEPTACLE - TOP MOUNT TYPE
- 2.NO. OF POSITION:  
A: 24 POSITIONS.
- 3.COLOR OF INSULATOR:  
K: BLACK.
- 4.PLATING OF CONTACT:  
1: GOLD FLASH ON CONTACT AREA,  
5: Au 30u" PLATING ON CONTACT AREA
- 5.PLATING OF FRONT SHELL  
1: SOLDERING NICKEL



PART NUMBER	DIM A	DIM B
C-ARA1-AK510	1.20mm	1.40mm
C-ARA1-AK511	1.60mm	1.80mm
C-ARA1-AK512	1.40mm	1.40mm
C-ARA1-AK515	1.20mm	1.80mm

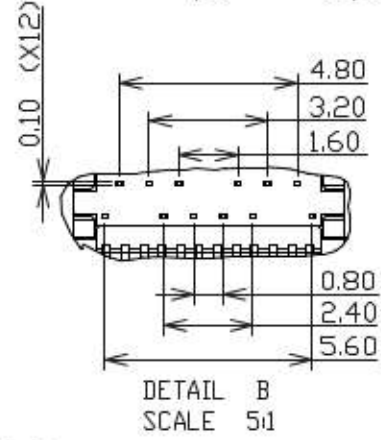
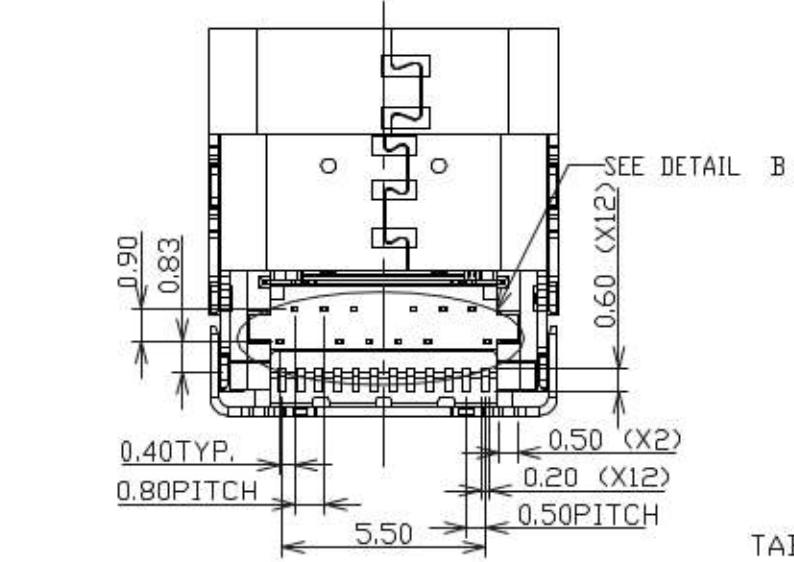


TABLE A:

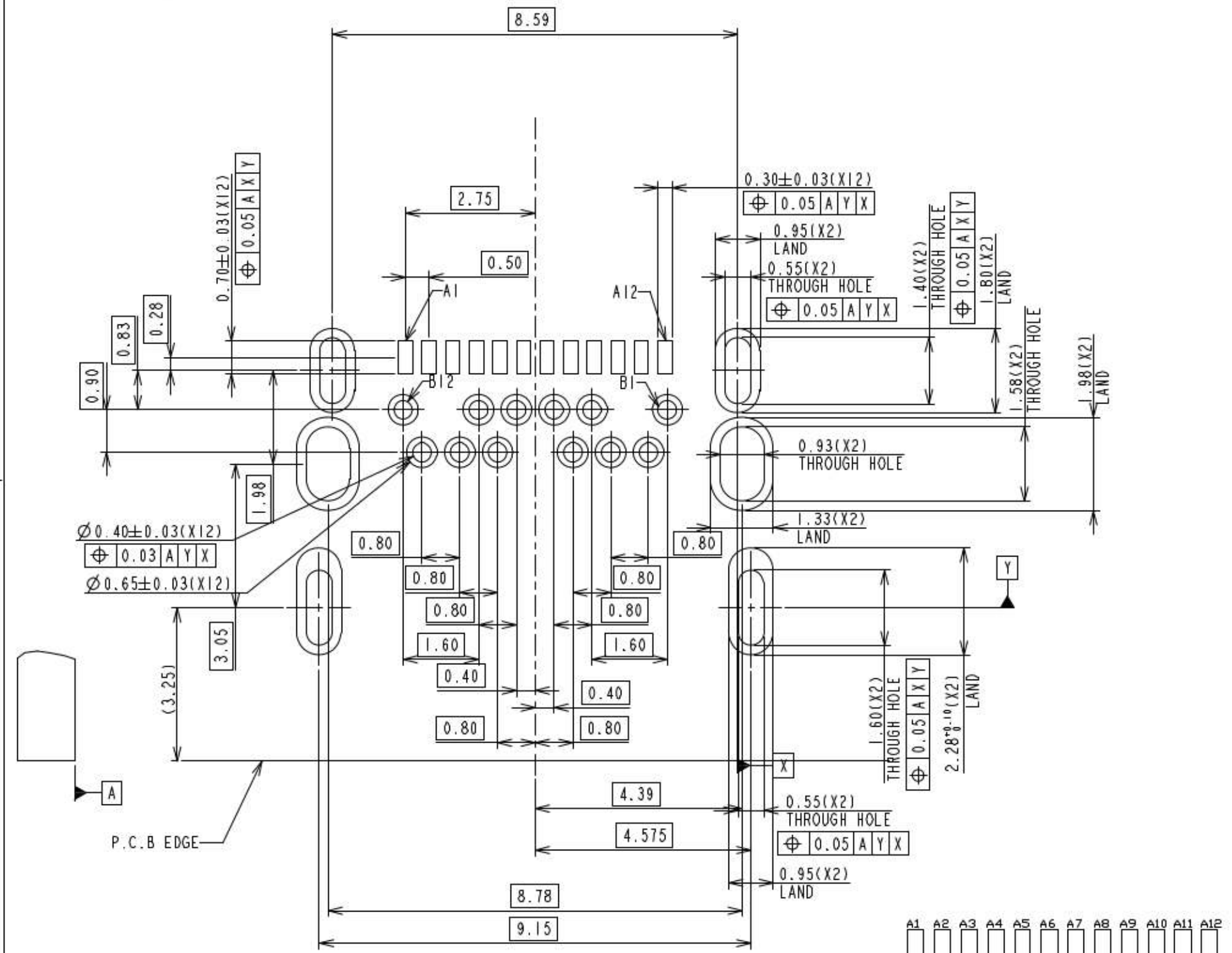
PIN NO.	A1	A2	A3	A4	A5	A6	A7	A8	A9	A10	A11	A12
SIGNAL NAME	GND	SSTXp1	SSTXn1	VBUS	CC1	Dp1	Dn1	SBU1	VBUS	SSRXn2	SSRXp2	GND
PIN NO.	B12	B11	B10	B9	B8	B7	B6	B5	B4	B3	B2	B1
SIGNAL NAME	GND	SSRXp1	SSRXn1	VBUS	SBU2	Dn1	Dp1	CC2	VBUS	SSTXn2	SSTXp2	GND

ITEM	NAME	Q'TY	PART #	MATERIAL / FINISH
6	EMI RING	2	~	METAL / Ni PLATED
5	GROUND PLATE	1	~	METAL / NI PLATED
4	OUTER SHELL	1	~	METAL / NI PLATED
3	SHELL	1	~	METAL / NI PLATED
2	CONTACT	24	~	COPPER ALLOY / Au PLATED
1	HALF PRODUCT	3	~	HI-TEMP G.F., UL94V-0

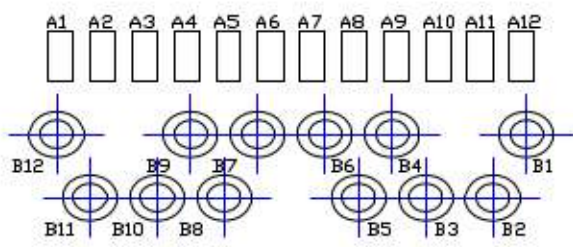
TOLERANCES UNLESS OTHERWISE SPECIFIED GENERAL X .X ±0.25 .XX ±0.13 .XXX ±0.05 ANGLES X° .X' ±30° .XX' ±20° .XXX' ±1.0°	DRAWN	DATE	<b>CnC Tech, LLC</b>  USB TYPE- C FULL FEATURE CONN. RECPTACLE TOP MOUNT TYPE
	AVEN	08/09/18'	
DESIGN	DATE		
AVEN	08/09/18'		
CHECKED	DATE	TITLE	
ROGER	08/09/18'	USB TYPE- C FULL FEATURE CONN. RECPTACLE TOP MOUNT TYPE	
APPROVED	DATE	SERIES	
ROGER	08/09/18'		
UNIT	MM	SIZE	
		A3	
C-ARA1-AK5XX		DWG NO.	C-ARA1-00-03
		REV.	X2

1 2 3 4 5 6 7 8

HALOGEN FREE



RECOMMENDED PCB LAYOUT  
THICKNESS IS 1.0mm  
TOLERANCE ± 0.05



- NOTES:
- 1.0. ELECTRICAL CHARACTERISTICS:
  - 1.1. LOW LEVEL CONTACT RESISTANCE:  
INITIAL: 40mΩ FOR ALL CONTACT MAX.  
AFTER : 50mΩ FOR ALL CONTACT MAX.
  - 1.2. DIELECTRIC WITHSTANDING VOLTAGE:  
100 VAC FOR 1 MINUTE SEA LEVEL.
  - 1.3. INSULATION RESISTANCE:  
100MΩ MIN.
  - 1.4. CURRENT RATING:  
VBUS AND GND CONTACTS RATED AT 1.25A EA.,  
PARALLELED FOR A TOTAL OF 5A.
  - 2.0. MECHANICAL CHARACTERISTICS:
  - 2.1. INSERTION FORCE: 5 ~ 20N MAX
  - 2.2. EXTRACTION FORCE:  
DURABILITY 1~1000 CYCLES 8N MIN, 20 N MAX.  
DURABILITY 1001~10000 CYCLES 6N MIN, 20 N MAX.
  - 2.3. DURABILITY : 10,000 CYCLES
  - 3.0 OPERATING TEMPERATURE: -40°C TO +85°

PART NUMBER

- C-ARA1-AK510
- C-ARA1-AK511
- C-ARA1-AK512
- C-ARA1-AK515

TOLERANCES UNLESS OTHERWISE SPECIFIED	DRAWN	DATE	CnC Tech, LLC
GENERAL X ±0.38	AVEN	08/09/18'	
XX ±0.25	DESIGN	DATE	TITLE USB TYPE- C FULL FEATURE CONN. RECEPTEALE - TOP MOUNT TYPE
XXX ±0.03	AVEN	08/09/18'	
ANGLES X° ±30°	CHECKED	DATE	SERIES C-ARA1-AK5XX SERIES
X° ±20°	ROGER	08/09/18'	
XX° ±10°	APPROVED	DATE	SIZE A3
SCALE 7:1	ROGER	08/09/18'	REV. X2
SHEET 2 OF 2	UNIT mm		
C-ARA1-AK5XX			DWG NO. C-ARA1-00-03