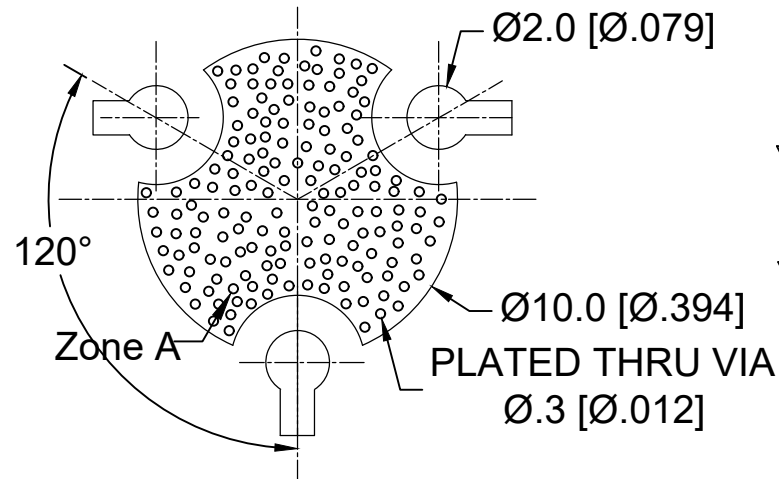
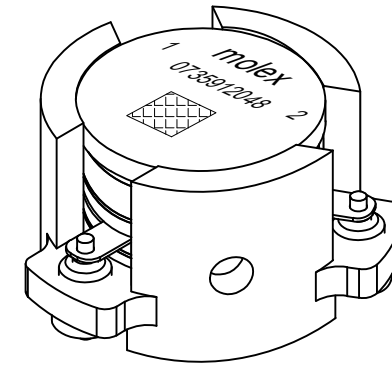
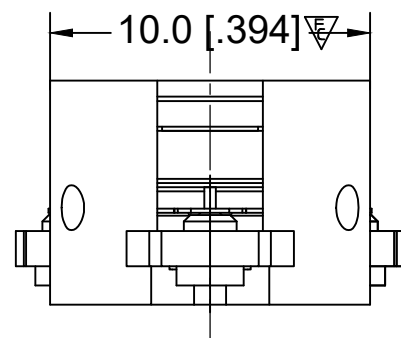
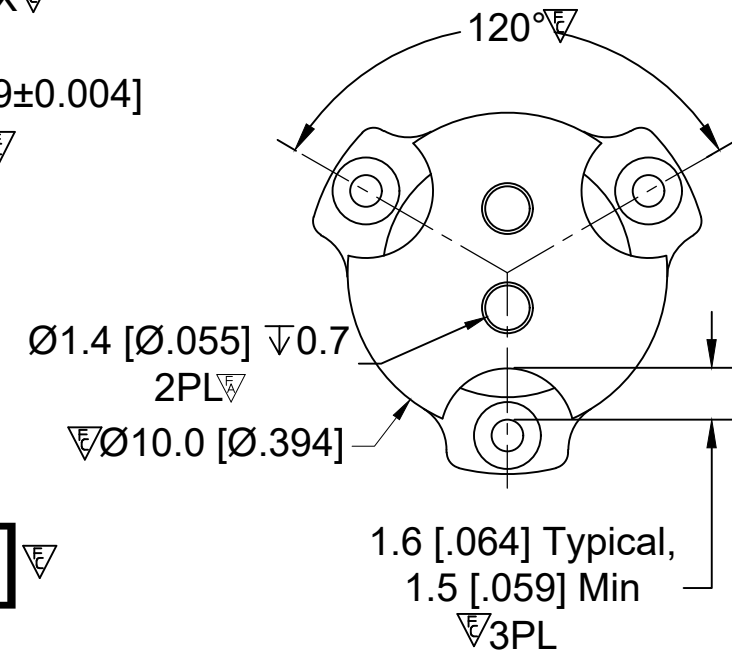
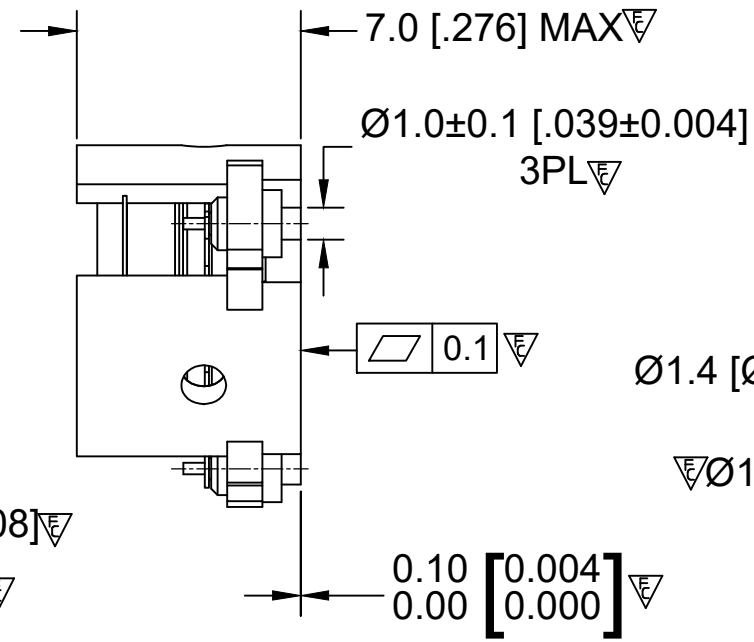
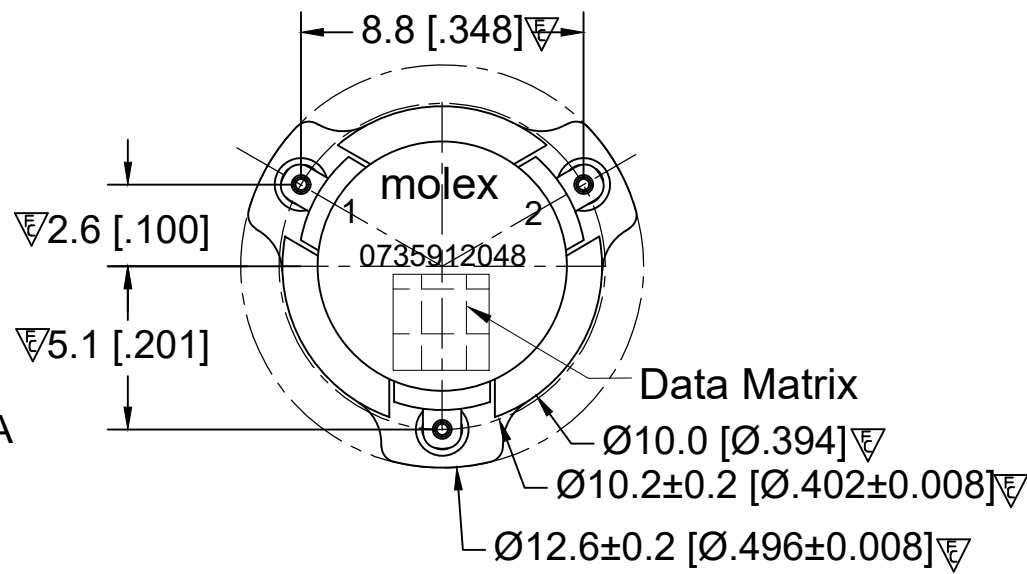


RECOMMENDED LAND PATTERN :

Zone A must be attached to heat sink. Thermal conductivity of intermediate layers between Zone A and heat sink must be better than 0.1 W / [°C x mm].



PCB Material :Rogers RO4350B,0.508mm thickness
trace width 1.07mm wide.



BODY: CARBON STEEL, SILVER PLATED

RIGID PINS: COPPER, SILVER PLATED

NOTES:

- 1.STANDARD INPUT/OUTPUT IMPEDANCE 50 Ohm
- 2.LEAD FREE, NO Nd MATERIAL, BeO FREE
- 3.THE DIMENSION OF DATE MATRIX IS 3X3MM INFORMATION INCLUDING WORK ORDER NUMBER-SERIAL NUMBER-MATERIAL NUMBER
- 4.THIS PART COMPLIES WITH ALL RoHS REQUIREMENTS

ELECTRICAL SPECIFICATIONS :

Frequency Range	: 3300~3800 MHz
Insertion Loss	: 0.25 dB Max@25°C,0.3 dB Max
Isolation	: 20 dB Min
Return Loss	: 20 dB Min
Average Power	: 20 W (CW)
Peak Power	: 160 W
FMD IMD3(2 x10W,1 MHz space):	-65 dBc Max
2nd Harmonic(20W CW)	: 50dBc min
3rd Harmonic(20W CW)	: 60dBc min
Operating Temperature	: -40°C to +110°C
Storage Temperature	: -65°C to +155°C
Direction	: CW

ENG PART#:802-330-380-VP040

THIS DRAWING CONTAINS INFORMATION THAT IS PROPRIETARY TO MOLEX ELECTRONIC TECHNOLOGIES, LLC AND SHOULD NOT BE USED WITHOUT WRITTEN PERMISSION										
FUNCTIONAL SYMBOLS	DIMENSION UNITS	SCALE	CURRENT REV DESC:							
$\nabla_A=0$	MM	1:1	RELEASE TO PROD							
$\nabla_E=0$	GENERAL TOLERANCES (UNLESS SPECIFIED)		EC NO: 696580							
$\nabla_P=0$	mm INCH		DRWN: SREN05 2022/02/21							
DIVISIONAL SYMBOLS	4 PLACES	±0.005 ±----	CHK'D: JLI252 2022/02/23							
	3 PLACES	±0.025 ±----	APPR: HWANG186 2022/03/01							
	2 PLACES	±0.13 ±----	INITIAL REVISION:							
	1 PLACE	±0.2 ±----	DRWN: SREN05 2021/11/15							
	0 PLACES	±0.4 ±----	APPR: HWANG186 2022/03/01							
	ANGULAR TOL ± 1.5 °		DRAFT WHERE APPLICABLE MUST REMAIN WITHIN DIMENSIONS							
	THIRD ANGLE PROJECTION		DRAWING		SERIES		MATERIAL NUMBER		CUSTOMER	
			A3-SIZE		73591		0735912048		CUSTOM PART	
			DOCUMENT NUMBER		DOC TYPE		DOC PART		REVISION	
			735912048		PSD		000		A	
DOCUMENT STATUS			P1		RELEASE DATE		2022/03/01		06:07:09	
9			8		7		6		4	
9			8		7		6		4	