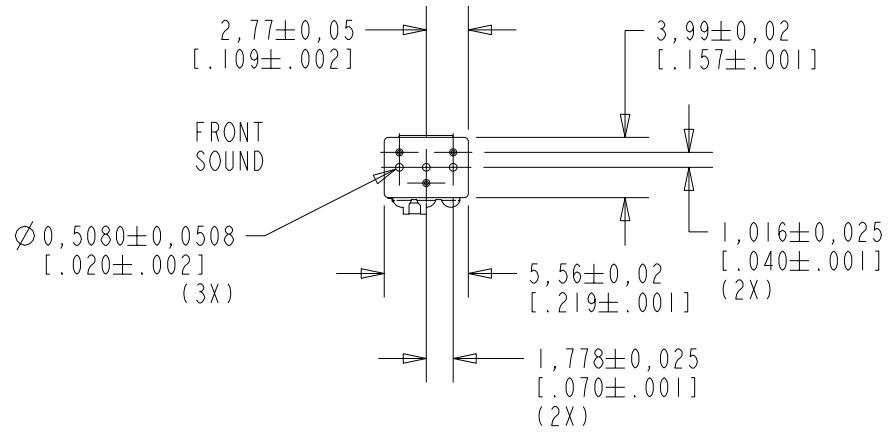
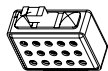
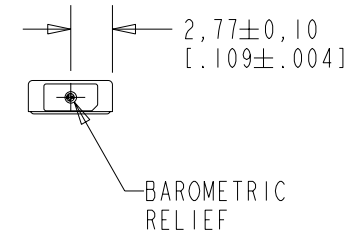
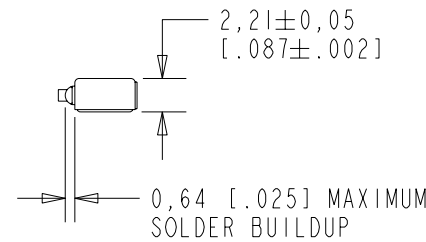
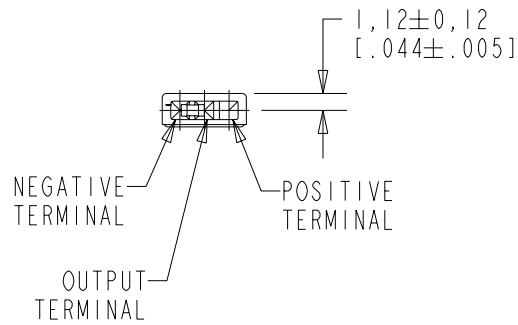


WP-25993-D63
SHT 1.1

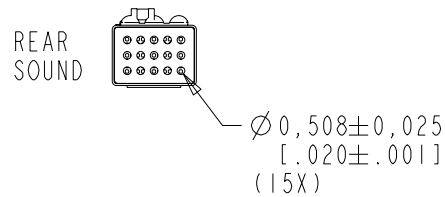


NOTE:

1. INCREASED PRESSURE AT THE FRONT SOUND INLET CAUSES A POSITIVE GOING VOLTAGE TO APPEAR AT THE OUTPUT TERMINAL, RELATIVE TO THE NEGATIVE TERMINAL.



NOMINAL WEIGHT
.13 GRAM



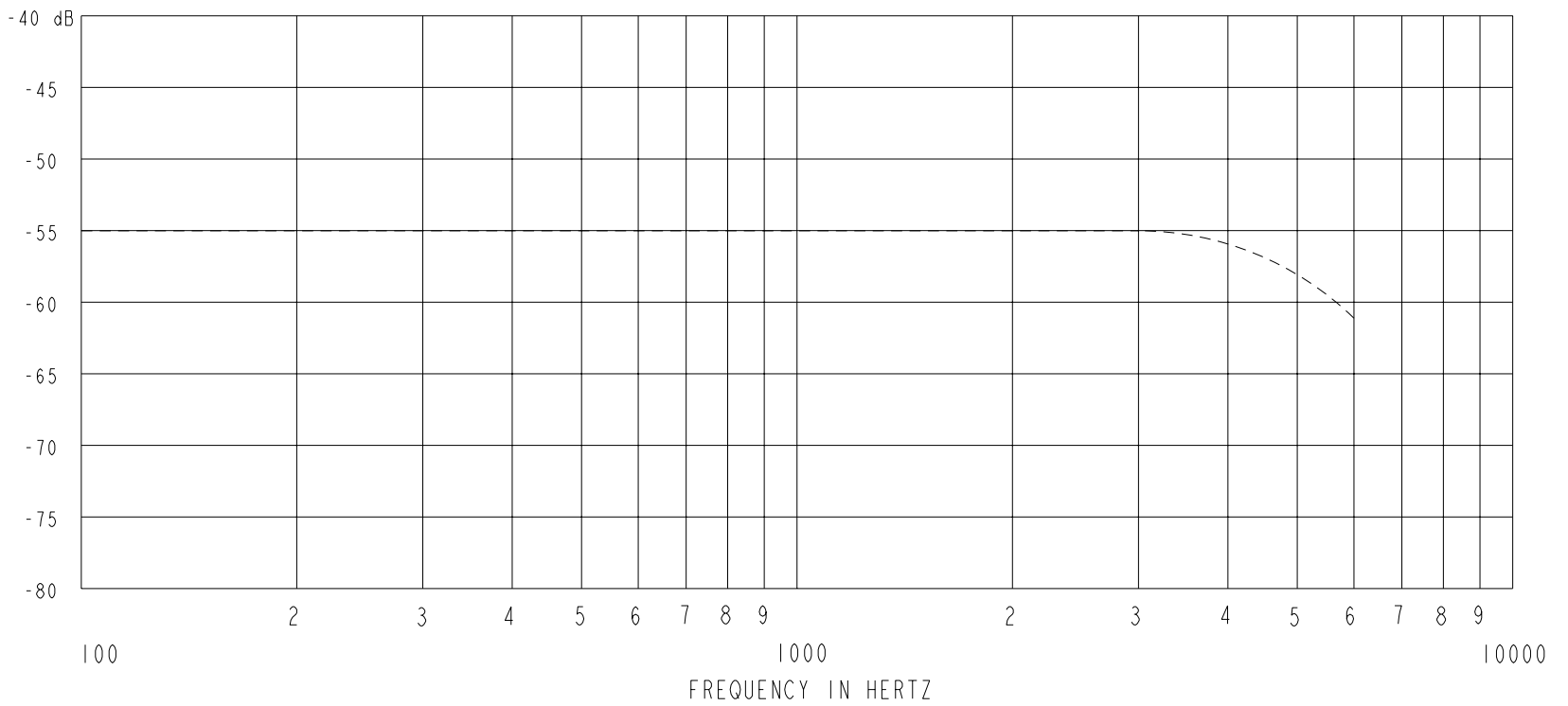
DIMENSIONS IN MILLIMETERS [INCHES]

KNOWLES ELECTRONICS
ITASCA, ILLINOIS U.S.A.

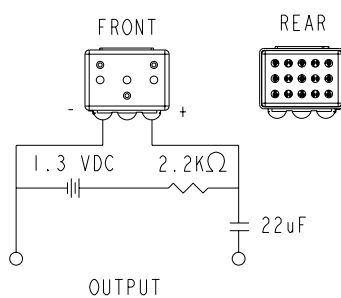
| Revision | C.O. # | Implementation Date | RELEASE LEVEL | REVISION |
|----------|-----------|---------------------|---------------|----------|
| A | MI0101749 | 12-28-07 | Released | A |

| | | | |
|----------------------|--------------|--------------|----------------|
| SCALE: 2:1 | | DR. BY: SDZ | DATE: 12-28-07 |
| DO NOT SCALE DRAWING | | CK. BY: GJP | DATE: 1-02-07 |
| TITLE: MICROPHONE | WP-25993-D63 | APP. BY: GJP | DATE: 1-02-07 |
| OUTLINE DRAWING | SHT 1.1 | | |

SENSITIVITY IN dB RELATIVE TO 1.0 VOLT/0.1 Pa (N/M²)
FOR CONDITIONS SHOWN BELOW.



| FREQUENCY | SENSITIVITY | | | DEVICE CONFORMITY | |
|-----------|-------------|-------|-------|------------------------------|------|
| | MIN. | NOM. | MAX. | RANGE OF DEVIATION FROM 1KHz | |
| 100 | --- | -55.0 | --- | -2.0 | +2.0 |
| 1000 | -59.0 | -55.0 | -51.0 | 0.0 | 0.0 |
| 4000 | --- | -57.0 | --- | -5.0 | +1.0 |



NOTES:

- CASE CONNECTED TO NEGATIVE TERMINAL.
- MICROPHONE TO BE FUNCTIONAL WITH 10 VDC SUPPLY.
- SENSITIVITY VALUES INDICATED ON THIS SPECIFICATION ARE VALID AT 50% HUMIDITY.
- PRESSURE DIFFERENCE SENSITIVITY TESTED WITH REAR SOUND PORT SEALED TO AIR VOLUME OF AT LEAST 0.5 CC.

| PORT LOCATION | DC SUPPLY | AMPLIFIER CURRENT DRAIN | OUTPUT IMPEDANCE OHMS | | |
|---------------|-----------|-------------------------|-----------------------|------|------|
| | | | MIN. | NOM. | MAX. |
| KA, JA | 1.3V | 300uA MAX. | 1000 | 2000 | 3000 |

| Revision | C.O. # | Implementation Date | RELEASE LEVEL | REVISION |
|----------|-----------|---------------------|---------------|----------|
| A | MI0101749 | 12-28-07 | Released | A |

KNOWLES ELECTRONICS
ITASCA, ILLINOIS U.S.A.

WHEN TEST LIMITS ARE USED TO ESTABLISH INCOMING INSPECTION ACCEPTANCE/REJECTION CRITERIA, CORRELATION OF TEST EQUIPMENT WITH KNOWLES IS ALSO REQUIRED FOR ELIMINATION OF EQUIPMENT AND TEST METHOD VARIATION

TITLE: MICROPHONE
PERFORMANCE SPECIFICATION

WP-25993-D63
SHT 2.1

| DR. BY | DATE |
|---------|----------|
| SDZ | 12-28-07 |
| CK. BY | DATE |
| GJP | 1-02-07 |
| APP. BY | DATE |
| GJP | 1-02-07 |