

△ MATERIAL: NYLON, UL94V-0 (COLOR - NATURAL, COLOR OF PARTS MAY VARY).
 HOUSING: 0.25 THK COPPER ALLOY.
 CONTACTS: 0.003 MIN THK TIN-LEAD OVER 0.00127 MIN THK NICKEL OVER ENTIRE CONTACT.

△ CONTACT FINISH: 0.00076 MIN THK GOLD PLATE ON PIN MATING SURFACE, 0.003 MIN THK TIN-LEAD PLATE ON SOLDER TAIL, ALL OVER 0.00127 MIN THK NICKEL BASE PLATE.

△ CONTACT FINISH: 0.00076 MIN THK GOLD PLATE ON PIN MATING SURFACE, 0.003 MIN THK TIN-LEAD PLATE ON SOLDER TAIL, ALL OVER 0.00127 MIN THK NICKEL OVER ENTIRE CONTACT.

△ CONTACT FINISH: 0.00076 MIN THK GOLD PLATE ON PIN MATING SURFACE, 0.003 MIN THK TIN-LEAD PLATE ON SOLDER TAIL, ALL OVER 0.00127 MIN THK NICKEL OVER ENTIRE CONTACT.

4. SOLDER TAIL MEETS AMP SOLDERABILITY SPECIFICATION 109-11-2.

5. MATES WITH SIMILARLY PLATED AMP-DUAC® POWER CONNECTOR RECEPTACLE HOUSINGS/SOCKET CONTACTS.

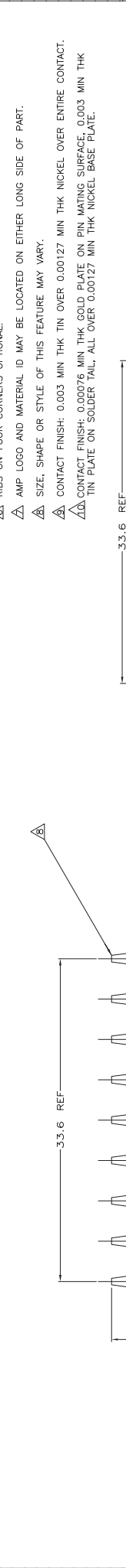
△ RIBS ON FOUR CORNERS OPTIONAL.

△ AMP LOGO AND MATERIAL ID MAY BE LOCATED ON EITHER LONG SIDE OF PART.

△ SIZE, SHAPE OR STYLE OF THIS FEATURE MAY VARY.

△ CONTACT FINISH: 0.003 MIN THK TIN OVER 0.00127 MIN THK NICKEL OVER ENTIRE CONTACT.

△ CONTACT FINISH: 0.00076 MIN THK GOLD PLATE ON PIN MATING SURFACE, 0.003 MIN THK TIN PLATE ON SOLDER TAIL, ALL OVER 0.00127 MIN THK NICKEL BASE PLATE.



MATERIAL	FINISH	CONTACT	HOUSING	COLOR	PART NO
△	△	△	△	△	1-794491-2
△	△	△	△	△	1-794491-1
△	△	△	△	△	794491-2
△	△	△	△	△	794491-1

SUPERSEDED BY 1-794491-2

SUPERSEDED BY 1-794491-1

THIS DRAWING IS A CONTROLLED DOCUMENT.			
REV.	DESCRIPTION	DATE	BY
1	INITIAL DESIGN	6-17-88	WJ
2	REVISED PER ECO-06-014732	6-17-88	WJ

DIMENSIONS:	
UNIT	VALUE
mm	108-1639
mm	108-1639
mm	108-1639
mm	108-1639
mm	108-1639
mm	108-1639

MATERIALS:	
DESCRIPTION	VALUE
BASE METAL	108-1639
FINISH	108-1639
CONTACT	108-1639
HOUSING	108-1639

APPLICATIONS:	
DESCRIPTION	VALUE
ASSEMBLY	ASSEMBLY, HEADER, VERTICAL
POSITION	18 POSITION, W/ DRAIN HOLES,
TYPE	AMP-DUAC (M)

MATERIALS:	
DESCRIPTION	VALUE
BASE METAL	108-1639
FINISH	108-1639
CONTACT	108-1639
HOUSING	108-1639

