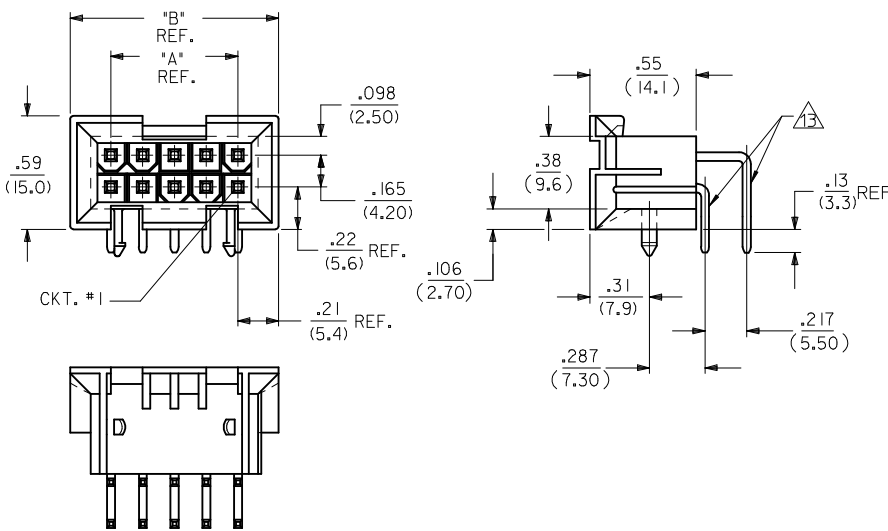


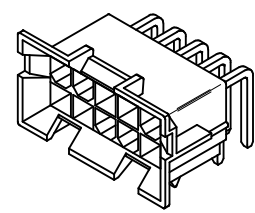
	13	12	11	10	9	8	7	6	5	4	3	2	1
	CIRCUIT SIZE	DIM. "A"	DIM. "B"										
J	6	.331 (8.40)	.76 (19.2)										
	8	.496 (12.60)	.92 (23.4)										
	10	.661 (16.80)	1.09 (27.6)										
I	12	.827 (21.00)	1.25 (31.8)										
	14	.992 (25.20)	1.42 (36.0)										
	16	1.157 (29.40)	1.58 (40.2)										
H	18	1.323 (33.60)	1.75 (44.4)										
	20	1.488 (37.80)	1.91 (48.6)										
	22	1.654 (42.00)	2.08 (52.8)										
G	24	1.819 (46.20)	2.24 (57.0)										



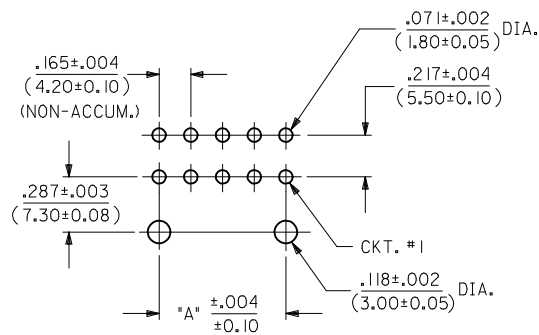
NOTES:

- MATERIAL: HOUSING: "A" = NYLON 6/6, U.L. 94V-2, COLOR: NATURAL. "B" = NYLON 6/6, U.L. 94V-0, COLOR: NATURAL. TERMINAL: BRASS ALLOY
- TERMINAL PLATING:
 - .000100/(.00254) MIN. MATTE TIN OVER .000050/(.00127) MIN. NICKEL OVERALL.
 - .000030/(.00076) MIN. SELECT GOLD AND .000100/(.00254) MIN. SELECT MATTE TIN OVER .000050/(.00127) MIN. NICKEL OVERALL.
- PRODUCT SPECIFICATION: PS-5556-002
- PACKAGING SPECIFICATION: PK-42404-002.
- 4-24 CKT. PARTS MATE WITH MINI-FIT JR. RECEPTACLES #5557, #42385, #44516 AND #42474. 2 CKT. PART MATES WITH #42385, #44516 AND #42474 ONLY.
- PART ALLOWS FOR UP TO .100/(2.54) MISALIGNMENT WITH MATING RECEPTACLE IN ANY DIRECTION. SEE MATING CONNECTOR DRAWINGS FOR SPECIFIC ALLOWANCES.
- CONNECTOR ASSEMBLIES ARE NOT TO BE MATED OR UNMATED WHILE CIRCUITS ARE LIVE.
- A MAXIMUM TOLERANCE OF .050/(1.27) ALLOWS FOR 2 POINTS OF ELECTRICAL CONTACT. A MAXIMUM TOLERANCE OF .020/(.51) ALLOWS FOR 4 POINTS OF CONTACT.
- DISCOLORATION IN THE BANDOLIER CARRIER AREA OF THE PIN IS INHERENT TO THE PLATING PROCESS AND IS DUE TO THE MASKING EFFECT OF THE CARRIER. THIS DISCOLORATION IS IN A NON-FUNCTIONAL AREA OF THE PIN AND WILL NOT AFFECT THE PERFORMANCE OF THE HEADER ASSEMBLY.
- PART IS NOT DESIGNED FOR CURRENT SHARING.
- PART IS NOT INTENDED TO PROVIDE ANY ALIGNMENT OF CUSTOMER COMPONENTS OR MODULES, SUCH AS POWER SUPPLIES AND CHASSIS.
- PARTS CONFORM TO CLASS 'B' REQUIREMENTS OF COSMETIC SPECIFICATION PS-45499-002.

- △ FORMING MARKS ARE ACCEPTABLE.
- △ CORNER CORE-OUTS ARE OPTIONAL AND MAY OR MAY NOT BE PRESENT
- 15) TEXT ON PART IS FOR REFERENCE ONLY. TEXT AND TEXT LOCATION MAY VARY DEPENDING ON PART NUMBER AND/OR TOOL.

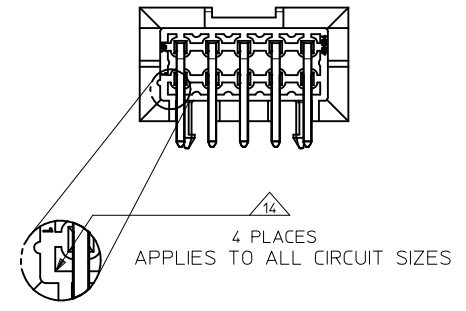
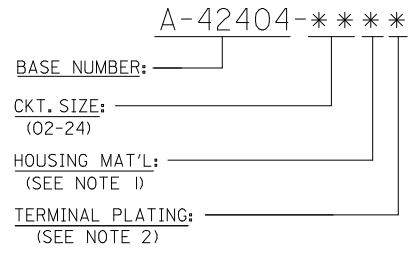


A-42404-****



RECOMMENDED HOLE LAYOUT FOR .070/(1.78) MAX. THICK P.C. BOARD VIEWED FROM COMPONENT SIDE

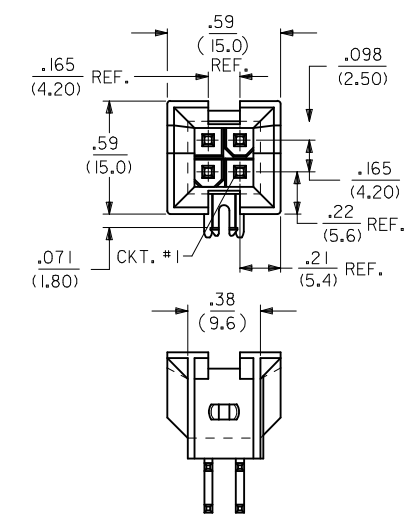
LEGEND:



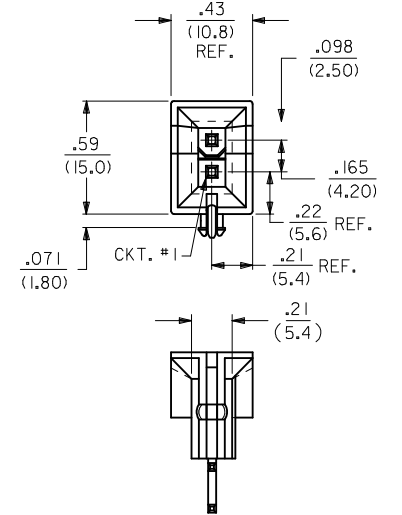
Part No.	Part No.	Part No.	Part No.	Part No.	Part No.	Part No.	Part No.	Part No.	Part No.	Part No.	Part No.	Part No.	Part No.
--*B2, --*B4	42474-***2I, 5556-PBGS*P	94V-0	PHOS. BRZ.	GOLD									
--*A2, --*A4	42474-***1I, 5556-PBGS*P	94V-2											
--*B1, --*B3	42474-***2I, 5556-PBS*P	94V-0	TIN										
--*A1, --*A3	42474-***1I, 5556-PBS*P	94V-2											
--*B2, --*B4	42474-***2I, 5556-GS*P	94V-0	BRASS	GOLD									
--*A2, --*A4	42474-***1I, 5556-GS*P	94V-2											
--*B1, --*B3	42474-***2I, 5556-S*P	94V-0	TIN										
--*A1, --*A3	42474-***1I, 5556-S*P	94V-2											
--*B2, --*B4	A-42385-***D2	94V-0	PHOS. BRZ.	GOLD									
--*A2, --*A4	A-42385-***C2	94V-2											
--*B1, --*B3	A-42385-***D1	94V-0	TIN										
--*A1, --*A3	A-42385-***C1	94V-2											
--*B2, --*B4	A-42385-***B2	94V-0	BRASS	GOLD									
--*A2, --*A4	A-42385-***A2	94V-2											
--*B1, --*B3	A-42385-***B1	94V-0	TIN										
--*A1, --*A3	A-42385-***A1	94V-2											

R.A. HEADER	MATING CONNECTOR	HSG. MAT'L.	TERM. MAT'L.	PLATING
A-42404				MATING CONNECTOR FEATURES

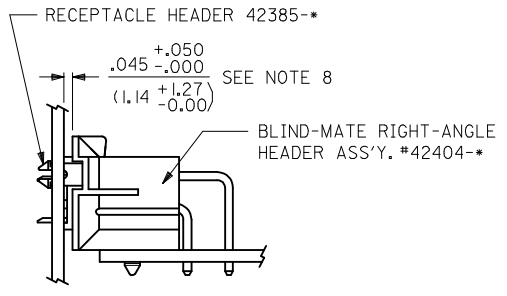
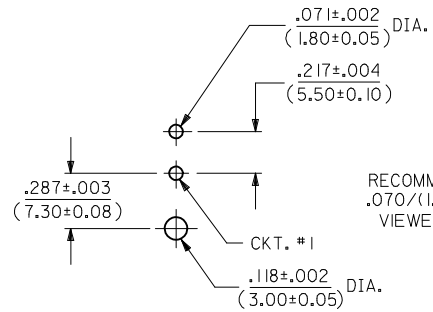
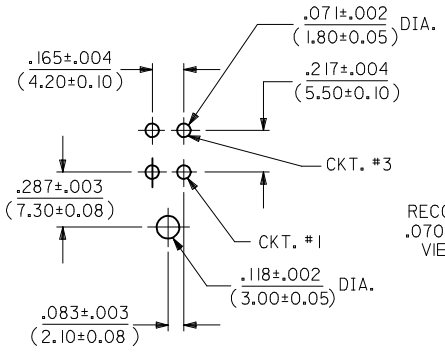
ADD BACK VIEW EC NO: UCP2017-0438 DRWNGS:LAFTER 2016/08/23 CHKD:JBELL 2016/08/23 APPR:FSMITH 2016/09/12	DESCRIPTION REV	QUALITY SYMBOLS ▽=0 ▽=0 ▽=0	GENERAL TOLERANCES (UNLESS SPECIFIED)		DIMENSION STYLE IN/MM		SCALE 2:1	DESIGN UNITS METRIC	THIRD ANGLE PROJECTION	
			4 PLACES ± --- ± --- 3 PLACES ± --- ± .10 2 PLACES ± 0.25 ± .015 1 PLACE ± 0.38 ± ---	mm INCH	DRAWN BY RWK	DATE 2/7/89	TITLE MINI-FIT JR. 2-24 CKT RIGHT ANGLE HEADER ASSY (BLIND MATE)			
			ANGULAR ±1/2°	APPROVED BY FSMITH	DATE 2011/11/01	MOLEX INCORPORATED				
			DRAFT WHERE APPLICABLE MUST REMAIN WITHIN DIMENSIONS	MATERIAL NO. SEE SHEET 3	DOCUMENT NO. SDA-42404-****	SHEET NO. 1 OF 3	THIS DRAWING CONTAINS INFORMATION THAT IS PROPRIETARY TO MOLEX INCORPORATED AND SHOULD NOT BE USED WITHOUT WRITTEN PERMISSION			



A-42404-04**



A-42404-02**



SEE RECEPTACLE DRAWINGS FOR ADDITIONAL MATING CONFIGURATIONS

SEE SHEET 1 EC NO: UCP2017-0436 DRAWN:CLAFTER 2016/08/23 CHKD:JBELL 2016/08/23 APPR:FSMITH 2016/09/21	QUALITY SYMBOLS ▽=0 ▽=0 ▽=0	GENERAL TOLERANCES (UNLESS SPECIFIED) mm INCH 4 PLACES ± --- ± --- 3 PLACES ± --- ± .010 2 PLACES ± 0.25 ± .015 1 PLACE ± 0.38 ± --- ANGULAR ±1/2°	DIMENSION STYLE IN/MM DRAWN BY DATE RWK 2/7/89 CHECKED BY DATE RJF 2/7/89 APPROVED BY DATE FSMITH 2011/11/01	SCALE 2:1 DESIGN UNITS METRIC THIRD ANGLE PROJECTION	TITLE MINI-FIT JR. 2-24 CKT RIGHT ANGLE HEADER ASSY (BLIND MATE)	MATERIAL NO. SEE SHEET 3	DOCUMENT NO. SDA-42404-****	SHEET NO. 2 OF 3
	DRAFT WHERE APPLICABLE MUST REMAIN WITHIN DIMENSIONS		THIS DRAWING CONTAINS INFORMATION THAT IS PROPRIETARY TO MOLEX INCORPORATED AND SHOULD NOT BE USED WITHOUT WRITTEN PERMISSION					
	T3		C					
	REV		C					

J
I
H
G
F
E
D
C
B
A

PART NUMBER	ENG. NUMBER	CKT. SIZE	HOUSING MATERIAL	PLATING (NOTE 2)
NOT TOOLED	A-42404-02A1	2	94V-2	MATTE TIN OVER NICKEL
15-24-6040	-04A1	4		
15-24-6060	-06A1	6		
NOT TOOLED	-08A1	8		
15-24-6100	-10A1	10		
NOT TOOLED	-12A1	12		
15-24-6140	-14A1	14		
NOT TOOLED	-16A1	16		
15-24-6180	-18A1	18		
NOT TOOLED	-20A1	20		
NOT TOOLED	-22A1	22		
15-24-6240	A-42404-24A1	24	94V-2	MATTE TIN OVER NICKEL
NOT TOOLED	A-42404-02A5	02	94V-2	SELECT GOLD OVER NICKEL
15-24-9047	A-42404-04A5	04		
15-24-9067	A-42404-06A5	06		
NOT TOOLED	A-42404-08A5	08		
15-24-9107	A-42404-10A5	10		
NOT TOOLED	A-42404-12A5	12		
15-24-9147	A-42404-14A5	14		
NOT TOOLED	A-42404-16A5	16		
15-24-9187	A-42404-18A5	18		
NOT TOOLED	A-42404-20A5	20		
NOT TOOLED	A-42404-22A5	22		
15-24-9247	A-42404-24A5	24	94V-2	SELECT GOLD OVER NICKEL
NOT TOOLED	A-42404-02B1	2	94V-0	MATTE TIN OVER NICKEL
15-24-9044	-04B1	4		
15-24-9064	-06B1	6		
NOT TOOLED	-08B1	8		
15-24-9104	-10B1	10		
NOT TOOLED	-12B1	12		
15-24-9144	-14B1	14		
15-24-9164	-16B1	16		
15-24-9184	-18B1	18		
NOT TOOLED	-20B1	20		
NOT TOOLED	-22B1	22		
15-24-9244	A-42404-24B1	24	94V-0	MATTE TIN OVER NICKEL
NOT TOOLED	A-42404-02B5	02	94V-0	SELECT GOLD OVER NICKEL
15-24-6043	A-42404-04B5	04		
15-24-6063	A-42404-06B5	06		
NOT TOOLED	A-42404-08B5	08		
15-24-6103	A-42404-10B5	10		
NOT TOOLED	A-42404-12B5	12		
15-24-6143	A-42404-14B5	14		
15-24-6163	A-42404-16B5	16		
15-24-6183	A-42404-18B5	18		
NOT TOOLED	A-42404-20B5	20		
NOT TOOLED	A-42404-22B5	22		
15-24-6243	A-42404-24B5	24	94V-0	SELECT GOLD OVER NICKEL

SEE SHEET 1

EC NO: UCP2017-0438
 DRAWNCSLAFATER 2016/08/23
 CHKD:JBELL 2016/08/23
 APPR:FSMITH 2016/09/21

REV T3

QUALITY SYMBOLS

GENERAL TOLERANCES (UNLESS SPECIFIED)

	mm	INCH
4 PLACES	± .010	± .0004
3 PLACES	± .015	± .0005
2 PLACES	± .025	± .0010
1 PLACE	± .038	± .0015

ANGULAR ±1/2°

DRAFT WHERE APPLICABLE MUST REMAIN WITHIN DIMENSIONS

DIMENSION STYLE: **IN/MM**

DRAWN BY: RWK DATE: 2/7/89
 CHECKED BY: RJF DATE: 2/7/89

APPROVED BY: FSMITH DATE: 2011/11/01

MATERIAL NO.

SIZE C

SCALE: 1:1 DESIGN UNITS: METRIC

THIRD ANGLE PROJECTION

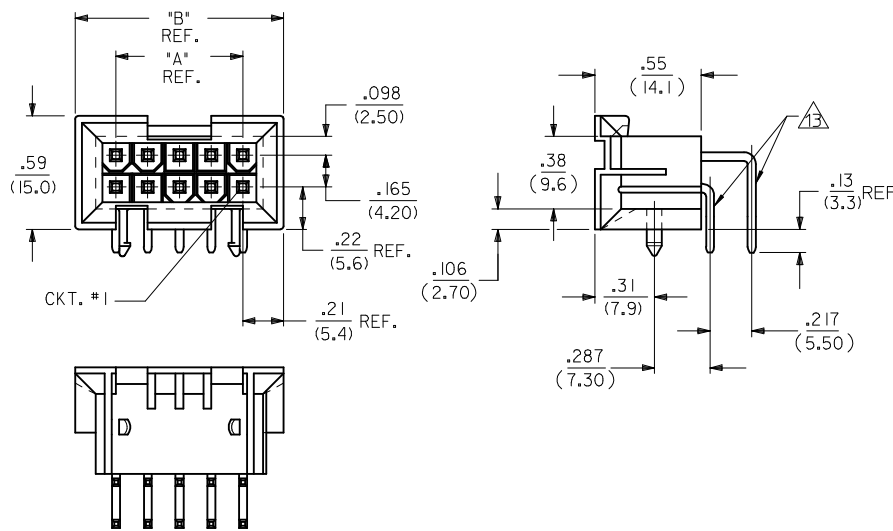
TITLE: **MINI-FIT JR. 2-24 CKT RIGHT ANGLE HEADER ASSY (BLIND MATE)**

MOLEX INCORPORATED

DOCUMENT NO. **SDA-42404-****** SHEET NO. 3 OF 3

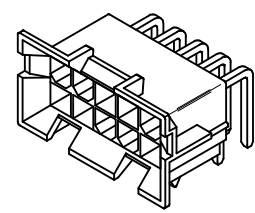
THIS DRAWING CONTAINS INFORMATION THAT IS PROPRIETARY TO MOLEX INCORPORATED AND SHOULD NOT BE USED WITHOUT WRITTEN PERMISSION

CIRCUIT SIZE	DIM. "A"	DIM. "B"
6	.331 (8.40)	.76 (19.2)
8	.496 (12.60)	.92 (23.4)
10	.661 (16.80)	1.09 (27.6)
12	.827 (21.00)	1.25 (31.8)
14	.992 (25.20)	1.42 (36.0)
16	1.157 (29.40)	1.58 (40.2)
18	1.323 (33.60)	1.75 (44.4)
20	1.488 (37.80)	1.91 (48.6)
22	1.654 (42.00)	2.08 (52.8)
24	1.819 (46.20)	2.24 (57.0)

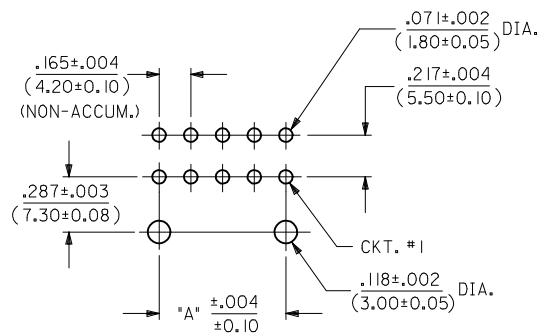


NOTES:

- MATERIAL: HOUSING: "A" = NYLON 6/6, U.L. 94V-2, COLOR: NATURAL.
"B" = NYLON 6/6, U.L. 94V-0, COLOR: NATURAL.
TERMINAL: BRASS ALLOY
- TERMINAL PLATING:
1 = .000100/(.00254) MIN. MATTE TIN OVER
.000050/(.00127) MIN. NICKEL OVERALL.
5 = .000030/(.00076) MIN. SELECT GOLD AND
.000100/(.00254) MIN. SELECT MATTE TIN OVER
.000050/(.00127) MIN. NICKEL OVERALL.
- PRODUCT SPECIFICATION: PS-5556-002
- PACKAGING SPECIFICATION: PK-42404-002.
- 4-24 CKT. PARTS MATE WITH MINI-FIT JR. RECEPTACLES #5557, #42385, #44516 AND #42474. 2 CKT. PART MATES WITH #42385, #44516 AND #42474 ONLY.
- PART ALLOWS FOR UP TO .100/(2.54) MISALIGNMENT WITH MATING RECEPTACLE IN ANY DIRECTION. SEE MATING CONNECTOR DRAWINGS FOR SPECIFIC ALLOWANCES.
- CONNECTOR ASSEMBLIES ARE NOT TO BE MATED OR UNMATED WHILE CIRCUITS ARE LIVE.
- A MAXIMUM TOLERANCE OF .050/(1.27) ALLOWS FOR 2 POINTS OF ELECTRICAL CONTACT. A MAXIMUM TOLERANCE OF .020/(.51) ALLOWS FOR 4 POINTS OF CONTACT.
- DISCOLORATION IN THE BANDOLIER CARRIER AREA OF THE PIN IS INHERENT TO THE PLATING PROCESS AND IS DUE TO THE MASKING EFFECT OF THE CARRIER. THIS DISCOLORATION IS IN A NON-FUNCTIONAL AREA OF THE PIN AND WILL NOT AFFECT THE PERFORMANCE OF THE HEADER ASSEMBLY.
- PART IS NOT DESIGNED FOR CURRENT SHARING.
- PART IS NOT INTENDED TO PROVIDE ANY ALIGNMENT OF CUSTOMER COMPONENTS OR MODULES, SUCH AS POWER SUPPLIES AND CHASSIS.
- PARTS CONFORM TO CLASS 'B' REQUIREMENTS OF COSMETIC SPECIFICATION PS-45499-002.*
- FORMING MARKS ARE ACCEPTABLE.
- CORNER CORE-OUTS ARE OPTIONAL AND MAY OR MAY NOT BE PRESENT
- TEXT ON PART IS FOR REFERENCE ONLY. TEXT AND TEXT LOCATION MAY VARY DEPENDING ON PART NUMBER AND/OR TOOL.

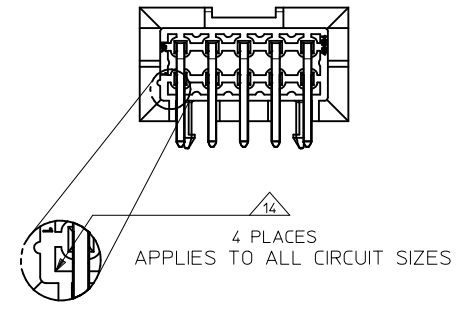
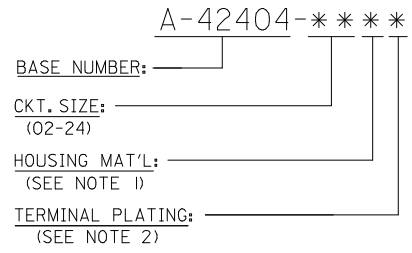


A-42404-****



RECOMMENDED HOLE LAYOUT FOR .070/(1.78) MAX. THICK P.C. BOARD VIEWED FROM COMPONENT SIDE

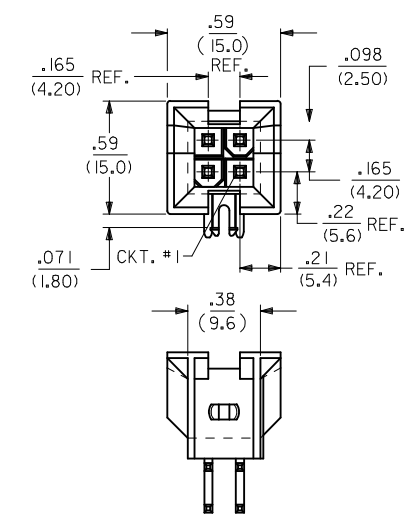
LEGEND:



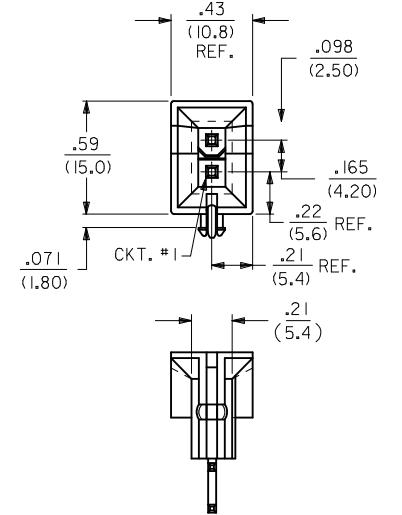
Part Number	Material	Plating	Notes
--**B2, --**B4	42474-**-21, 5556-PBGS*P	94V-0	PHOS. BRZ.
--**A2, --**A4	42474-**-11, 5556-PBGS*P	94V-2	
--**B1, --**B3	42474-**-21, 5556-PBS*P	94V-0	TIN
--**A1, --**A3	42474-**-11, 5556-PBS*P	94V-2	
--**B2, --**B4	42474-**-21, 5556-GS*P	94V-0	BRASS
--**A2, --**A4	42474-**-11, 5556-GS*P	94V-2	
--**B1, --**B3	42474-**-21, 5556-S*P	94V-0	TIN
--**A1, --**A3	42474-**-11, 5556-S*P	94V-2	
--**B2, --**B4	A-42385-**-D2	94V-0	PHOS. BRZ.
--**A2, --**A4	A-42385-**-C2	94V-2	
--**B1, --**B3	A-42385-**-D1	94V-0	TIN
--**A1, --**A3	A-42385-**-C1	94V-2	
--**B2, --**B4	A-42385-**-B2	94V-0	BRASS
--**A2, --**A4	A-42385-**-A2	94V-2	
--**B1, --**B3	A-42385-**-B1	94V-0	TIN
--**A1, --**A3	A-42385-**-A1	94V-2	

R.A. HEADER	MATING CONNECTOR	HSG. MAT'L.	TERM. MAT'L.	PLATING
A-42404				MATING CONNECTOR FEATURES

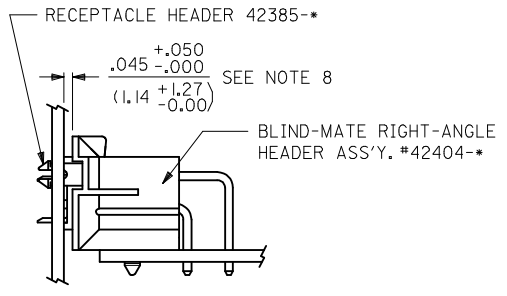
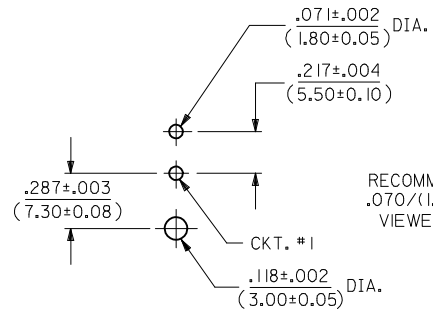
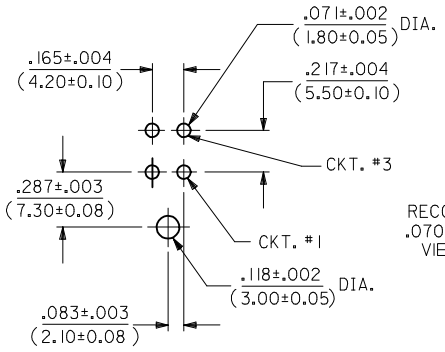
ADD BACK VIEW EC NO: UCP2017-0438 DRWNGS: LAFTER 2016/08/23 CHKD: J.BELL 2016/08/23 APPR: F.S.MITH 2016/09/121	QUALITY SYMBOLS ▽=0 ▽=0 ▽=0	GENERAL TOLERANCES (UNLESS SPECIFIED) <table border="1"> <tr> <th></th> <th>mm</th> <th>INCH</th> </tr> <tr> <td>4 PLACES ±</td> <td>---</td> <td>---</td> </tr> <tr> <td>3 PLACES ±</td> <td>---</td> <td>±.010</td> </tr> <tr> <td>2 PLACES ±</td> <td>0.25</td> <td>±.015</td> </tr> <tr> <td>1 PLACE ±</td> <td>0.38</td> <td>±---</td> </tr> </table>			mm	INCH	4 PLACES ±	---	---	3 PLACES ±	---	±.010	2 PLACES ±	0.25	±.015	1 PLACE ±	0.38	±---	DIMENSION STYLE IN/MM	SCALE 2:1	DESIGN UNITS METRIC	THIRD ANGLE PROJECTION
			mm	INCH																		
		4 PLACES ±	---	---																		
		3 PLACES ±	---	±.010																		
2 PLACES ±	0.25	±.015																				
1 PLACE ±	0.38	±---																				
DRAWN BY RWK DATE 2/7/89		CHECKED BY RJF DATE 2/7/89		TITLE MINI-FIT JR. 2-24 CKT RIGHT ANGLE HEADER ASSY (BLIND MATE)																		
APPROVED BY FSMITH DATE 2011/11/01		MATERIAL NO. SEE SHEET 3		DOCUMENT NO. SDA-42404-****																		
DRAFT WHERE APPLICABLE MUST REMAIN WITHIN DIMENSIONS		SIZE C		SHEET NO. 1 OF 3																		



A-42404-04**



A-42404-02**



SEE RECEPTACLE DRAWINGS FOR ADDITIONAL MATING CONFIGURATIONS

SEE SHEET 1 EC NO: UCP2017-0438 DRAWN:CLAFTER 2016/08/23 CHKD:JBELL 2016/08/23 APPR:FSMITH 2016/09/21	QUALITY SYMBOLS	GENERAL TOLERANCES (UNLESS SPECIFIED)	DIMENSION STYLE	SCALE	DESIGN UNITS	THIRD ANGLE PROJECTION
	▽=0	mm INCH	IN/MM	2:1	METRIC	
	▽=0	4 PLACES ± --- ± ---	DRAWN BY DATE	TITLE		
	▽=0	3 PLACES ± --- ± .010	RWK 2/7/89	MINI-FIT JR. 2-24 CKT RIGHT ANGLE HEADER ASSY (BLIND MATE)		
	2 PLACES ± 0.25 ± .015	CHECKED BY DATE	MOLEX MOLEX INCORPORATED			
	1 PLACE ± 0.38 ± ---	RJF 2/7/89	MATERIAL NO. DOCUMENT NO.			
	ANGULAR ±1/2°	APPROVED BY DATE	SEE SHEET 3			
		FSMITH 2011/11/01	SDA-42404-****			
			SHEET NO. 2 OF 3			
			THIS DRAWING CONTAINS INFORMATION THAT IS PROPRIETARY TO MOLEX INCORPORATED AND SHOULD NOT BE USED WITHOUT WRITTEN PERMISSION			

J	J	I	H	G	F	E	D	C	B	A		
13	12	11	10	9	8	7	6	5	4	3	2	1

	PART NUMBER	ENG. NUMBER	CKT. SIZE	HOUSING MATERIAL	PLATING (NOTE 2)
	NOT TOOLED	A-42404-02A1	2	94V-2	MATTE TIN OVER NICKEL
	I5-24-6040	-04A1	4		
	I5-24-6060	-06A1	6		
	NOT TOOLED	-08A1	8		
	I5-24-6100	-10A1	10		
	NOT TOOLED	-12A1	12		
	I5-24-6140	-14A1	14		
	NOT TOOLED	-16A1	16		
	I5-24-6180	-18A1	18		
	NOT TOOLED	-20A1	20		
	NOT TOOLED	-22A1	22		
	I5-24-6240	A-42404-24A1	24	94V-2	MATTE TIN OVER NICKEL
	NOT TOOLED	A-42404-02A5	02	94V-2	SELECT GOLD OVER NICKEL
	I5-24-9047	A-42404-04A5	04		
	I5-24-9067	A-42404-06A5	06		
	NOT TOOLED	A-42404-08A5	08		
	I5-24-9107	A-42404-10A5	10		
	NOT TOOLED	A-42404-12A5	12		
	I5-24-9147	A-42404-14A5	14		
	NOT TOOLED	A-42404-16A5	16		
	I5-24-9187	A-42404-18A5	18		
	NOT TOOLED	A-42404-20A5	20		
	NOT TOOLED	A-42404-22A5	22		
	I5-24-9247	A-42404-24A5	24	94V-2	SELECT GOLD OVER NICKEL
	NOT TOOLED	A-42404-02B1	2	94V-0	MATTE TIN OVER NICKEL
	I5-24-9044	-04B1	4		
	I5-24-9064	-06B1	6		
	NOT TOOLED	-08B1	8		
	I5-24-9104	-10B1	10		
	NOT TOOLED	-12B1	12		
	I5-24-9144	-14B1	14		
	I5-24-9164	-16B1	16		
	I5-24-9184	-18B1	18		
	NOT TOOLED	-20B1	20		
	NOT TOOLED	-22B1	22		
	I5-24-9244	A-42404-24B1	24	94V-0	MATTE TIN OVER NICKEL
	NOT TOOLED	A-42404-02B5	02	94V-0	SELECT GOLD OVER NICKEL
	I5-24-6043	A-42404-04B5	04		
	I5-24-6063	A-42404-06B5	06		
	NOT TOOLED	A-42404-08B5	08		
	I5-24-6103	A-42404-10B5	10		
	NOT TOOLED	A-42404-12B5	12		
	I5-24-6143	A-42404-14B5	14		
	I5-24-6163	A-42404-16B5	16		
	I5-24-6183	A-42404-18B5	18		
	NOT TOOLED	A-42404-20B5	20		
	NOT TOOLED	A-42404-22B5	22		
	I5-24-6243	A-42404-24B5	24	94V-0	SELECT GOLD OVER NICKEL

SEE SHEET 1 EC NO: UCP2017-0438 DRAWNCSL:AFTER 2016/08/23 CHKD:JBELL 2016/08/23 APPR:FSMITH 2016/09/21	QUALITY SYMBOLS	GENERAL TOLERANCES (UNLESS SPECIFIED)		DIMENSION STYLE		SCALE	DESIGN UNITS	THIRD ANGLE PROJECTION
		IN/MM		IN/MM		1:1	METRIC	
REV T3	DESCRIPTION	▽ = 0	4 PLACES ± ---	INCH ± ---	DRAWN BY	DATE	TITLE MINI-FIT JR. 2-24 CKT RIGHT ANGLE HEADER ASSY (BLIND MATE)	
		▽ = 0	3 PLACES ± ---	±.010	RWK	2/7/89		
		▽ = 0	2 PLACES ± 0.25	±.015	CHECKED BY	DATE		
		▽ = 0	1 PLACE ± 0.38	±---	RJF	2/7/89	APPROVED BY DATE FSMITH 2011/11/01	MOLEX MOLEX INCORPORATED
			ANGULAR ±1/2°		MATERIAL NO.	DOCUMENT NO.		
			DRAFT WHERE APPLICABLE MUST REMAIN WITHIN DIMENSIONS		SEE CHART		SDA-42404-****	3 OF 3
			THIS DRAWING CONTAINS INFORMATION THAT IS PROPRIETARY TO MOLEX INCORPORATED AND SHOULD NOT BE USED WITHOUT WRITTEN PERMISSION					