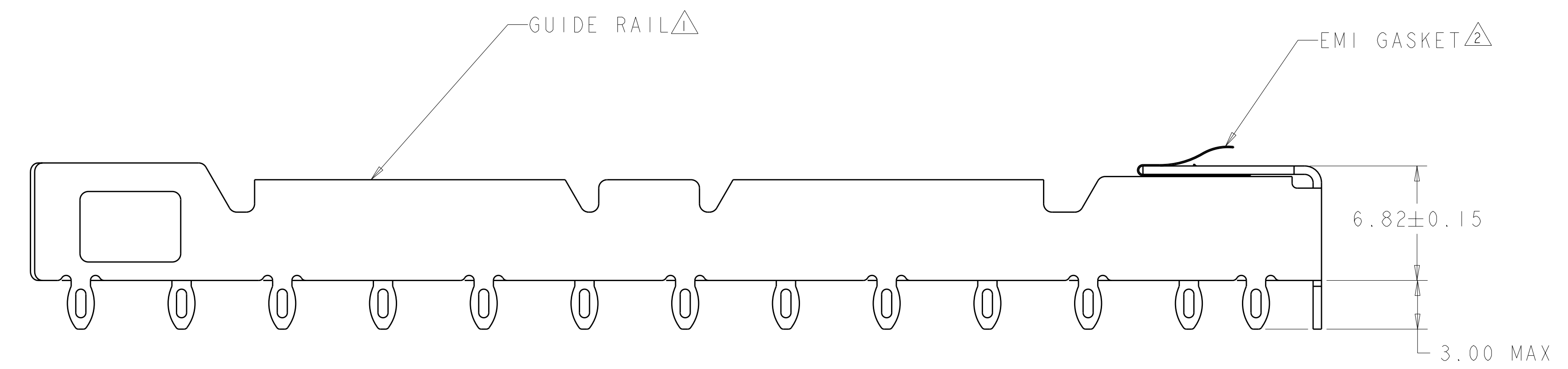
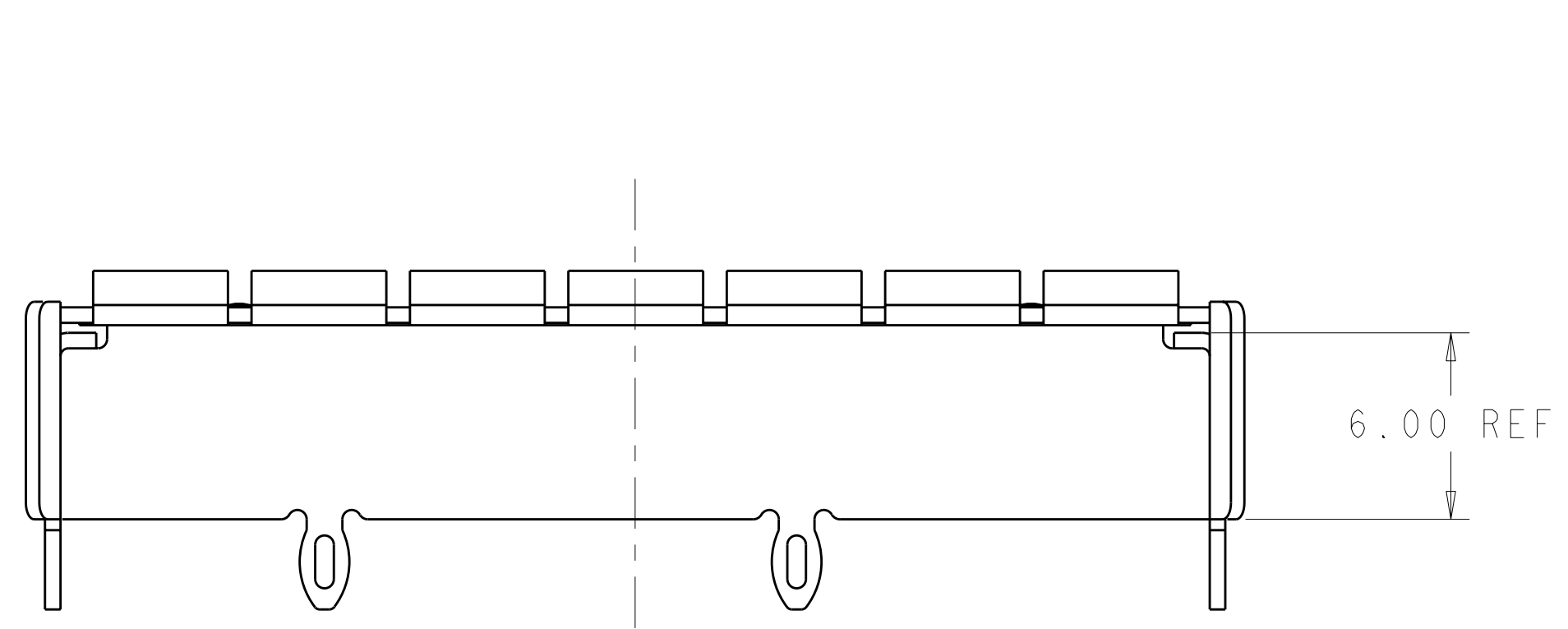
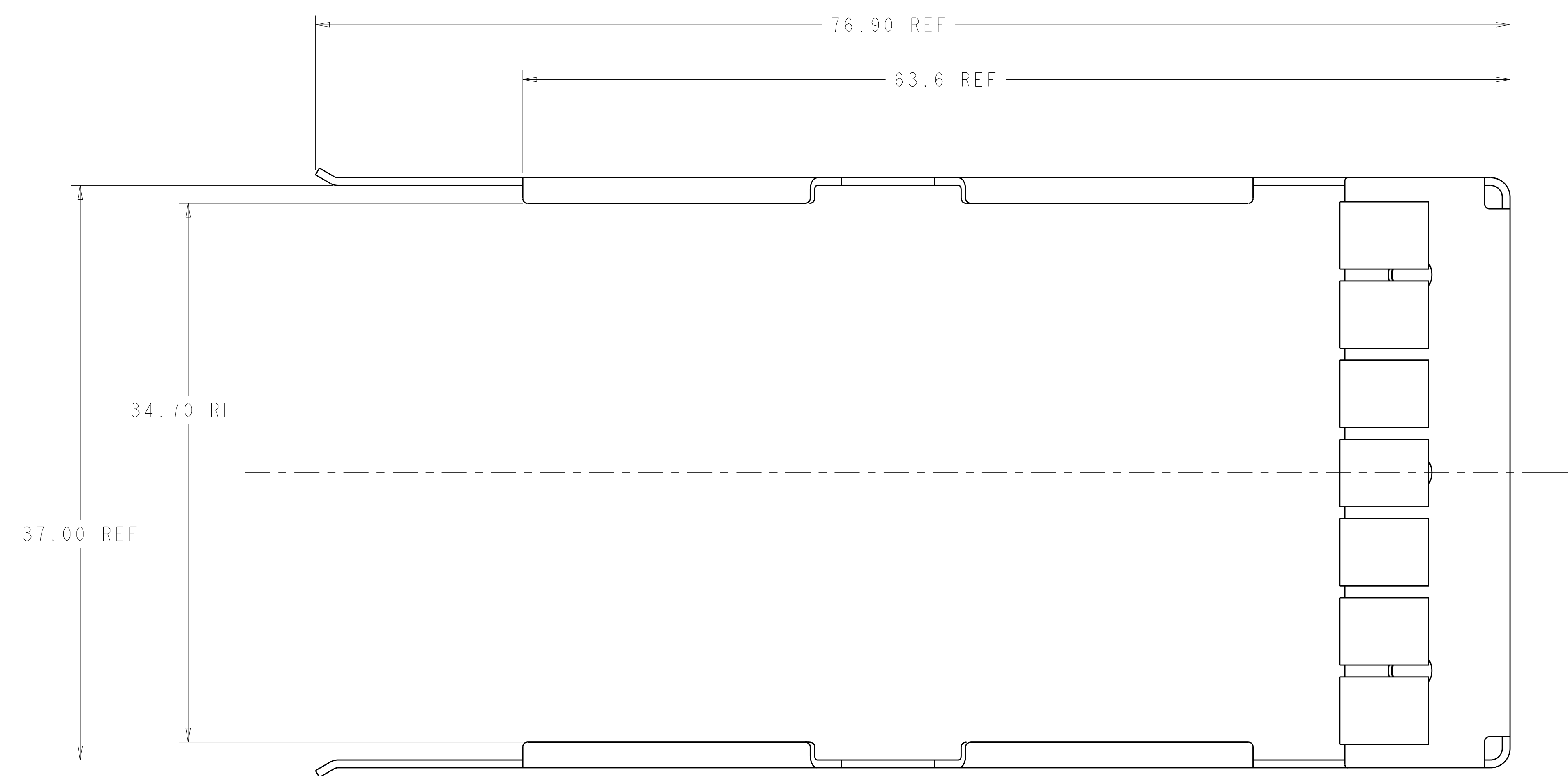


LOC	DIST	REV	DATE	BY	CHK	APPV
AG	00					

REV	DATE	DESCRIPTION	DATE	BY	CHK	APPV
5	11JUL2006	Ø 1.55±0.02 WAS Ø 1.45 ±0.02				
A	11APR07	RELEASED PER ECO-07-007698				

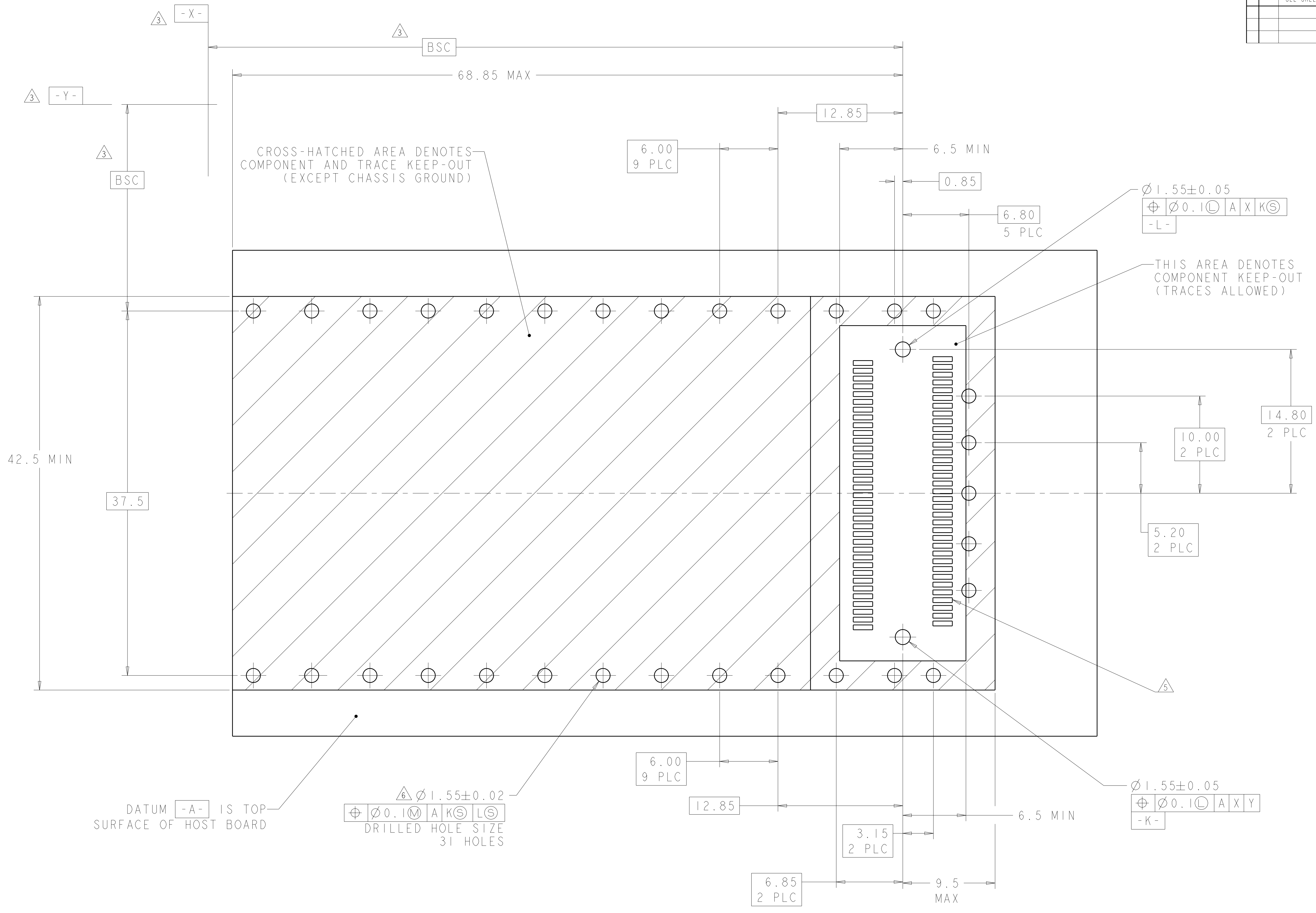
- △ GUIDE RAIL MATERIAL: COPPER ALLOY  
 GUIDE RAIL FINISH: 0.4 MICROMETERS MIN THK TIN COATING
- △ EMI GASKET MATERIAL: COPPER ALLOY  
 EMI GASKET PLATING: 2 MICROMETERS MIN THK TIN PLATE
- △ DATUMS X AND Y AND BSC DIMENSIONS TO BE ESTABLISHED BY CUSTOMER
- 4. DESIGN ACCEPTS MODULES THAT ARE COMPLIANT WITH X2 SPECIFICATION REV 2.0b
- △ SEE CUSTOMER DRAWING 1367337-1 FOR CONNECTOR PAD DIMENSIONS
- △ RECOMMENDATION FOR P.C. BOARD HOLES:  
 COPPER UNDERPLATE, 25-50 MICROMETERS THICK, FOLLOWED BY ANY OF THESE SURFACE FINISHES:
  - A. HASL SnPb: 35 MICROMETERS MAX THK
  - B. GALVANIC Au: 4-5 MICROMETERS Ni + 0.1-0.5 MICROMETERS Au
  - C. OSP: 0.2-0.5 MICROMETERS THK
  - D. IMMERSION Sn: 0.5 MICROMETERS MIN THK
  - E. IMMERSION Au: 4-5 MICROMETERS Ni + 0.1-0.5 MICROMETERS Au
  - F. IMMERSION Ag: 0.1-0.3 MICROMETERS
- 7. BARE EDGES PERMITTED
- 8. 3.0 MIN PRINTED CIRCUIT BOARD THICKNESS FOR BELLY TO BELLY APPLICATION
- 9. BEZEL REQUIREMENTS PER X2 MSA
- 10. REFERENCE INSTRUCTION SHEET 408-8997 FOR ADDITIONAL INSTRUCTIONS.



1367608-1  
 PART NUMBER

DIMENSIONS: mm 		TOLERANCES UNLESS OTHERWISE SPECIFIED: 9 PLC ±0.5 1 PLC ±0.2 5 PLC ±0.1 4 PLC ± ANGLES ±		DWN P. KERLIN 04MAR2004 CHK E. BRIGHT 04MAR2004 APVD - NAME PRODUCT SPEC APPLICATION SPEC WEIGHT CUSTOMER DRAWING		Tyco Electronics Harrisburg, PA 17105-3608 RAIL ASSY, GUIDE, X2 BELLY TO BELLY SIZE CAGE CODE DRAWING NO RESTRICTED TO A 00779 C=1367608 SCALE 5:1 SHEET 1 OF 3 REV A	
-----------------------	--	---	--	--	--	--	--

LOC	DIST	REV	DATE	BY	APPD
AG	00				
DESCRIPTION			DATE	DWN	APPD
SEE SHEET 1					



## RECOMMENDED P.C. BOARD LAYOUT FOR BELLY TO BELLY X2

DIMENSIONS:		TOLERANCES UNLESS OTHERWISE SPECIFIED:		MATERIAL:		FINISH:		MATERIAL:				
mm	9 PLC	$\pm 0.5$	1 PLC	$\pm 0.2$	2 PLC	$\pm 0.1$	3 PLC	$\pm$	4 PLC	$\pm$	ANGLES	$\pm$

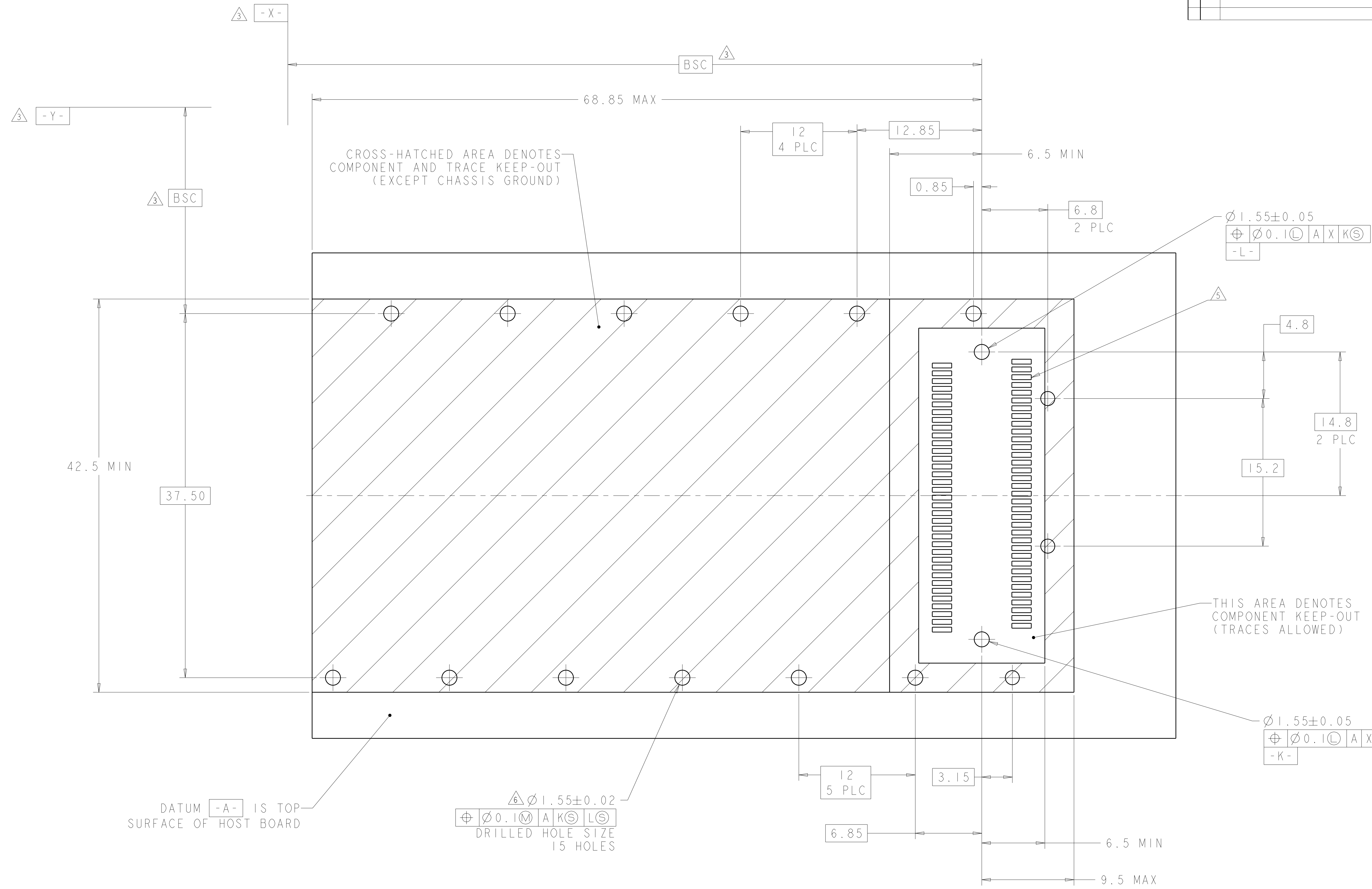
  

DWN	P. KERLIN	04MAR2004		Tyco Electronics	
CHK	E. BRIGHT	04MAR2004		Harrisburg, PA 17105-3608	
APVD			NAME		
PRODUCT SPEC			RAIL ASSY, GUIDE, X2		
APPLICATION SPEC			BELLY TO BELLY		
SIZE	CAGE CODE	DRAWING NO	RESTRICTED TO		
A	00779	C=1367608			
CUSTOMER DRAWING			SCALE	5:1	SHEET 2 OF 3
			REV	A	

LOC	DIST	REV	DATE	BY	APPD
AG	00				

REVISIONS		DATE	BY	APPD
1	SEE SHEET 1			



DATUM -A- IS TOP SURFACE OF HOST BOARD

$\phi 1.55 \pm 0.02$   
 $\phi 0.1$  M A K S L S  
 DRILLED HOLE SIZE  
 15 HOLES

## RECOMMENDED P.C. BOARD LAYOUT FOR SINGLE SIDE MOUNTED X2

<small>THIS DRAWING IS UNPUBLISHED. RELEASED FOR PUBLICATION BY TYCO ELECTRONICS CORPORATION. ALL RIGHTS RESERVED.</small>		DWN P. KERLIN 04MAR2004 CHK E. BRIGHT 04MAR2004 APVD -	<b>tyco</b> Electronics Tyco Electronics Harrisburg, PA 17105-3608
DIMENSIONS: mm 	TOLERANCES UNLESS OTHERWISE SPECIFIED: 9 PLC $\pm 0.5$ 1 PLC $\pm 0.2$ 5 PLC $\pm 0.1$ 4 PLC $\pm$ ANGLES $\pm$	PRODUCT SPEC APPLICATION SPEC WEIGHT CUSTOMER DRAWING	NAME RAIL ASSY, GUIDE, X2 BELLY TO BELLY SIZE CAGE CODE DRAWING NO RESTRICTED TO A 00779 C=1367608
MATERIAL FINISH		SCALE 5:1 SHEET 3 OF 3 REV A	