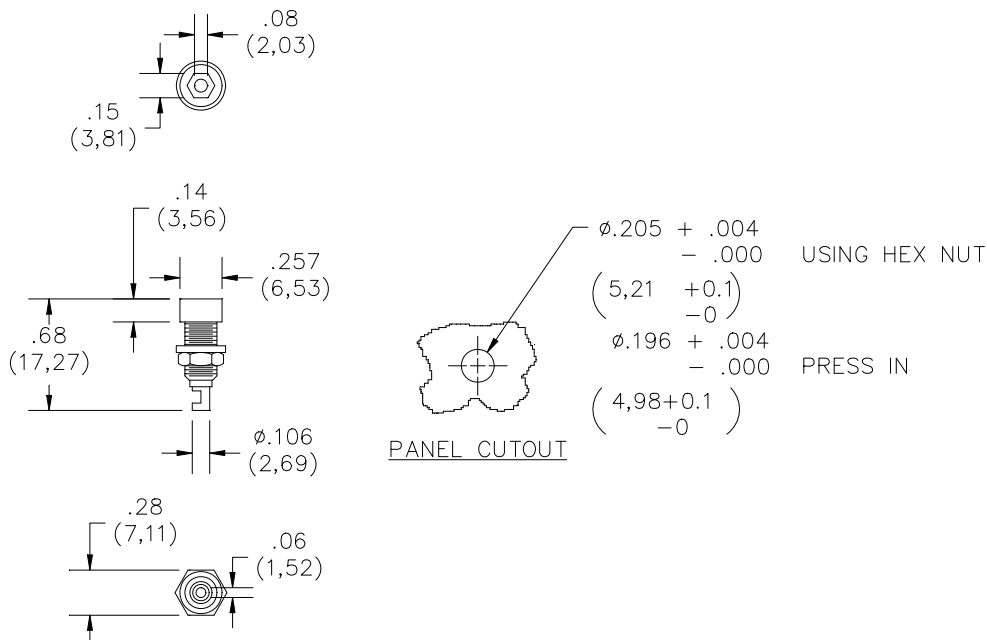


Model 5935
2mm (.080in) Insulated Banana Jack



Features

- Banana jack is insulated from the panel
- Solder hole at the bottom of the jack allows for 18 to 22 AWG wire attachment
- Recommended maximum panel thickness: $.31''$ (8,0 mm)

Materials

Banana Jack and Nut: Brass, Nickel Plated
Insulator: Nylon

Ratings

Operating Voltage: For *CE Compliance* and for personal safety, do not hold in hand when voltages exceed 30 Vrms/60 Vdc. Maximum voltage for *hands free use*: 500 Vrms.
Do not use on circuits where transient stresses can exceed the rated voltage.

Operating Current: 5 Amperes Max.

Ordering Information

Model: 5935-
* = Standard Color: -0 Black
Sold in packages of 10
Ordering Example: 5935-0, Banana Jack is Black.

USA: Sales: 800-490-2361
Technical Support: technicalsupport@pomonatest.com
Fax: 425-446-5844
Europe: 31-(0) 40 2675 150 **International:** 425-446-5500
Where to Buy: www.pomonaelectronics.com

All dimensions are in inches. Tolerances (except noted): $.xx = \pm .02''$ (.51 mm), $.xxx = \pm .005''$ (.127 mm). All specifications are to the latest revisions. Specifications are subject to change without notice. Registered trademarks are the property of their respective companies.