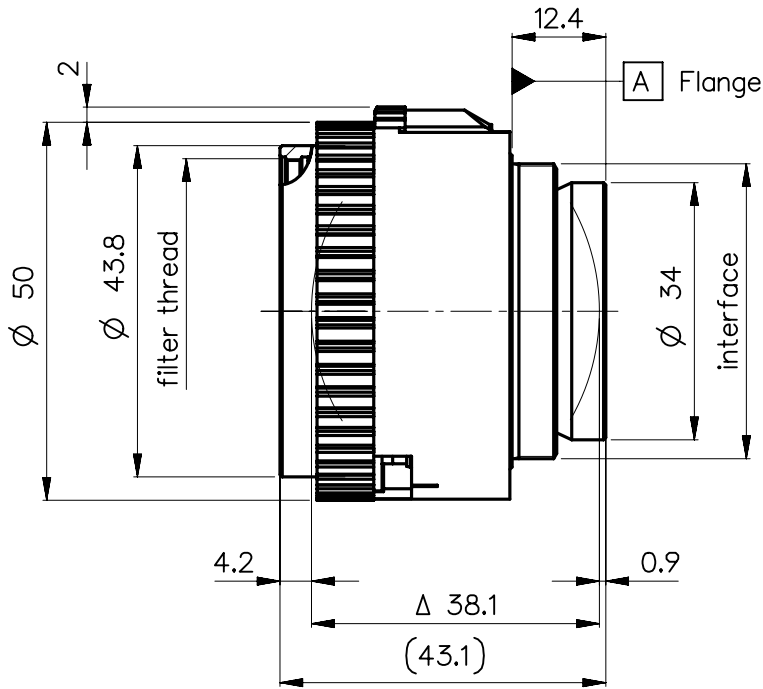
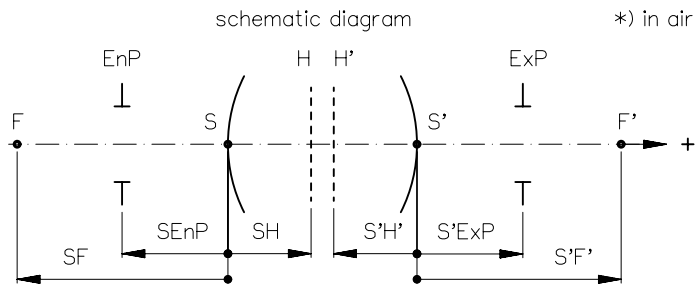


order number	lens name
0701-398-000-40	Rodagon 5.6/135



<b>Specification</b>		ON	7461-9001
image circle max. (mm)	105	working distance (mm)	385 - 1475
focal length $f'$ (mm) *	136.2	interface	M39 x1/26" (Leica)
magnification $\beta'$ [range]	-0.2 [-0.5 ... -0.1]	filter thread	M40.5 x0.5
spectral range $\lambda$ (nm)	400 - 750	weight (g)	115

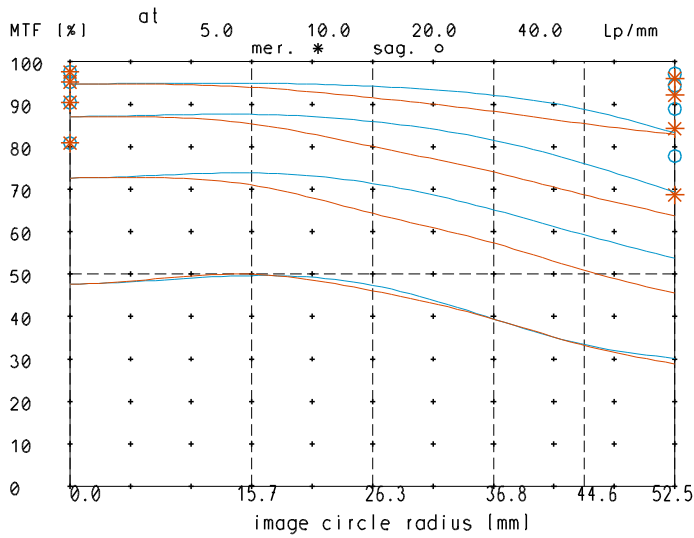


design includes CCD cover glass:	no		
SF (mm)	-117.1	f-stop	
S'F' (mm) *	117.2	$\varnothing$ EnP	23.8
HH' (mm) *	-0.1	$\varnothing$ Exp	23.3
SH (mm)	19.1		
S'H' (mm) *	-19.1		
SEnP (mm)	21.9		
S'Exp (mm) *	-16.3		

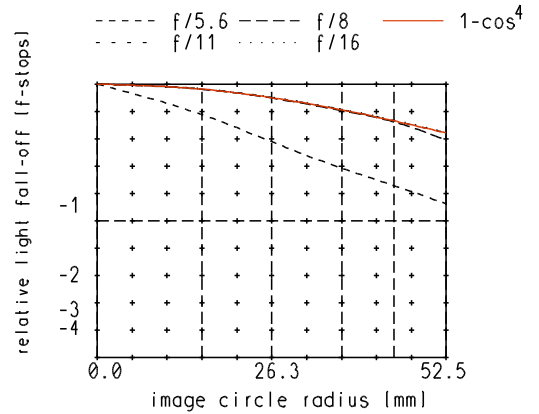
PROTECTIVE NOTE "DIN ISO 16016" TO BE OBSERVED	EU-D	AL-T1A	US-D	US-ML	not export controlled
	REV	ECC	DATE	APPROVED	PDM Status Freigabe
	a	Neuausg			-
	b	11-358	13.07.11	Kuehne	SCALE 1:1
	c	11-022	09.08.11	Denk	MATERIAL
	d	12-0185	28.03.12	Schuber	TITLE <b>Rodagon 5.6/135</b>
	e	12-0185	25.04.12	Schuber	
	f	14-0184	18.03.14	Schiffe	
g	14-0184	12.08.14	Schiffe		
h	14-0184	19.02.15	Schiffe	FIRST DATE NAME ISSUE 28.06.06 Fleck CHKD 28.06.06 Hegele	
DIN A 4	ALL DIMENSIONS ARE IN MM AND INCLUDE SURFACE TREATMENT				
				DRAWING NO.	SHEET 1
				0701-398-100-00-0001h	OF 1
				REPLACES	

# Rodagon\_135

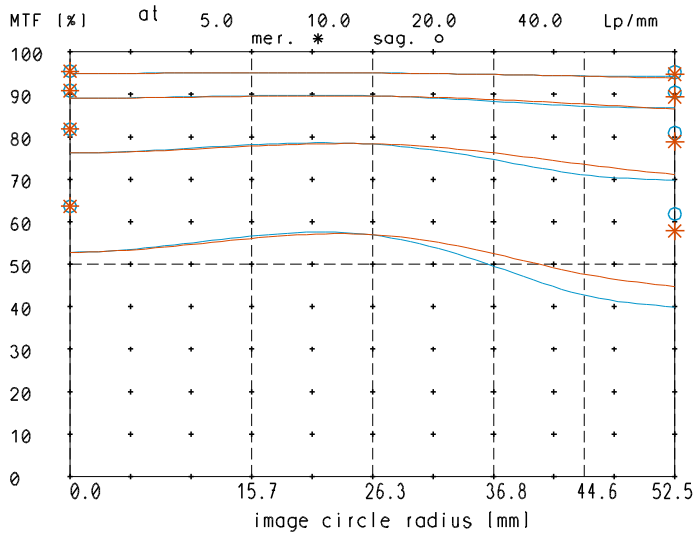
MTF at ratio 0.2x f/ 5.6



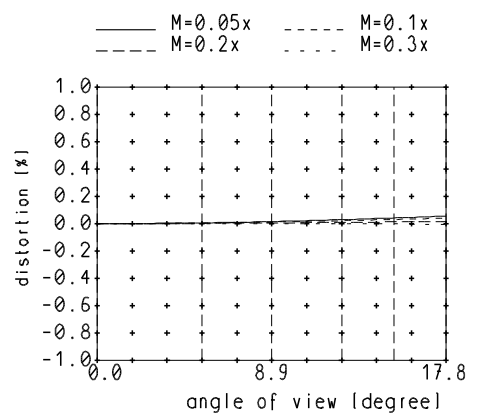
relative light fall-off at ratio 0.2x



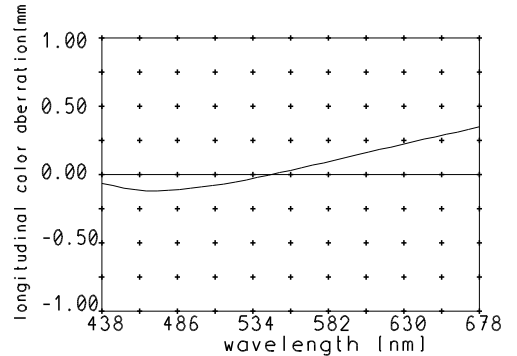
MTF at ratio 0.2x f/ 11



Distortion at ratio 0.05x to 0.3x



Longitudinal color aberration at ratio 0.2x



— sagittal. o Diffraction limited value  
 — meridional \* Diffraction limited value

Named frequencies (line pairs/mm) in modular transfer function (MTF) as well as diagrams of relative light fall-off, distortion and longitudinal color aberration refer to film plane.