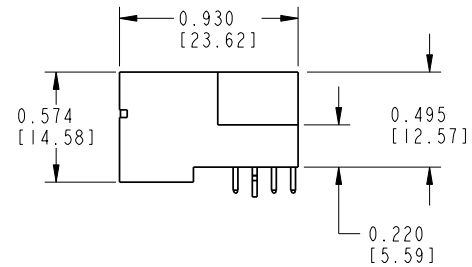
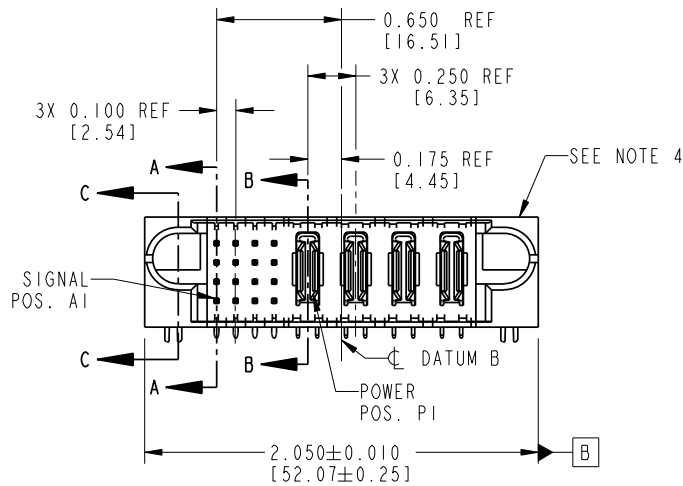
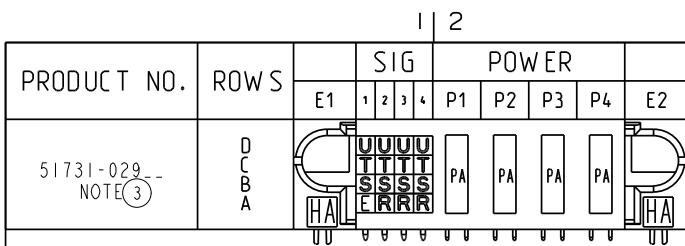


Tous droits strictement réservés. Reproduction ou communication o des liers interdite sous quelque forme que ce soit sans autorisation écrite du propriétaire. Propriété de c FCI. Droits de reproduction FCI.

All rights strictly reserved. Reproduction or issue to third parties in any form whatever is not permitted without written authority from the proprietor. Property of FCI. Copyright FCI.

**FCI**



CODE	DIM "M" MATING LENGTH	CONTACT TYPE
E	0.220 [5.59]	SIGNAL
R	0.270 [6.86]	SIGNAL
S	0.270 [6.86]	SIGNAL
T	0.270 [6.86]	SIGNAL
U	0.270 [6.86]	SIGNAL
PA	N/A [N/A]	POWER
HA	N/A [N/A]	HOLD-DOWN
X	OMITTED	OMITTED

mat'l code				tolerances unless otherwise specified		CUSTOMER	
SEE NOTE 2				.XX±.01/0.X±0.3		FCI www.fciconnect.com	
lir	ecn no.	dr	date	linear	.XXX±.005/0.XX±0.13	COPY	
A	DG05-0045	SW	03/14/05	angles	.XXXX±.0020/0.XXX±0.051	projection	
B	DG05-0531	GuoJM	12/19/05	dr	0°±2°	INCH/MM	
				enrg	STEVEN WANG 03/14/05	product family PwrBlade code 213	
				chr	VICTOR LIN 03/14/05	size dwg no	
				appd	JOSEPH HSIA 03/14/05	A 51731-029 sheet 1 of 4	
sheet index	revision sheet	B 1	B 2	B 3	B 4	scale 1:1	

Pro/E

**PDM: Rev: B**

STATUS: **Released**

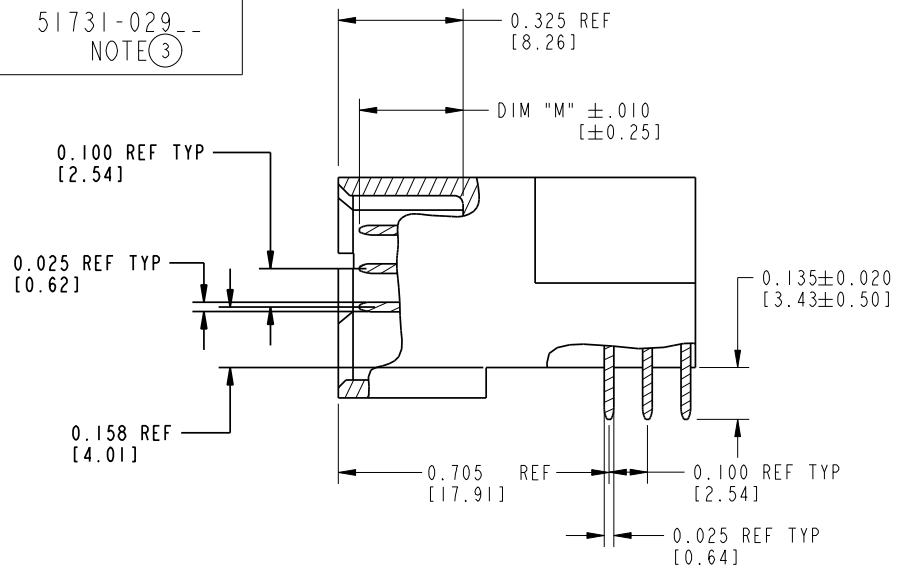
Printed: Oct 08, 2006

Tous droits strictement réservés. Reproduction ou communication a des tiers interdite sous quelque forme que ce soit sans autorisation écrite du propriétaire. Propriété de c FCI. Droits de reproduction FCI.

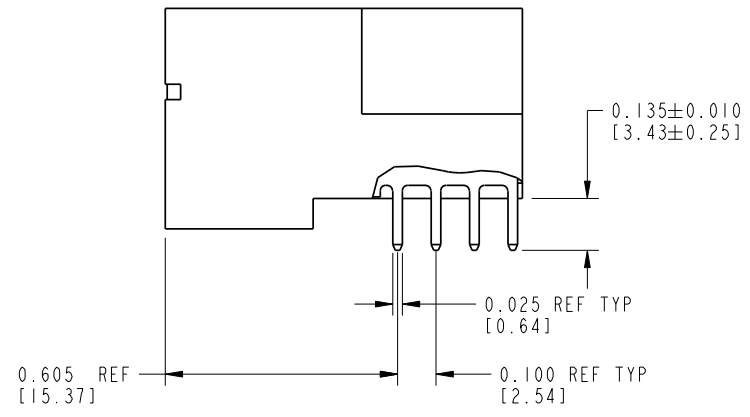
All rights strictly reserved. Reproduction or issue to third parties in any form whatever is not permitted without written authority from the proprietor. Property of FCI. Copyright FCI.

**FCI**

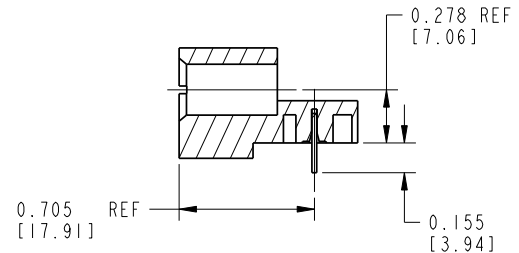
PRODUCT NUMBER  
51731-029  
NOTE ③



BROKEN-OUT SECTION A-A  
SCALE 2:1



BROKEN-OUT SECTION B-B  
SCALE 2:1



SECTION C-C

mat'l code		tolerances unless otherwise specified		CUSTOMER		<b>FCI</b>		www.fciconnect.com	
lir	ecn no.	dr	date	linear	.XX±.01/0.X±0.3	COPY		title 16S + 4P	
B				linear	.XXX±.005/0.XX±0.13	projection		RIGHT ANGLE SOLDER HEADER	
				angles	.XXX±.0020/0.XXX±0.051	INCH/MM		product family PwrBlade	
				dr	0°±2°	scale		code 213	
				engr	STEVEN WANG 03/14/05	1:1		sheet 2 of 4	
				chr	STEVEN WANG 03/14/05			size dwg no	
				chr	VICTOR LIN 03/14/05			A 51731-029	
				appd	JOSEPH HSIA 03/14/05			code code 22556	
sheet index	revision sheet								

Pro/E

**PDM: Rev: B**

STATUS: **Released**

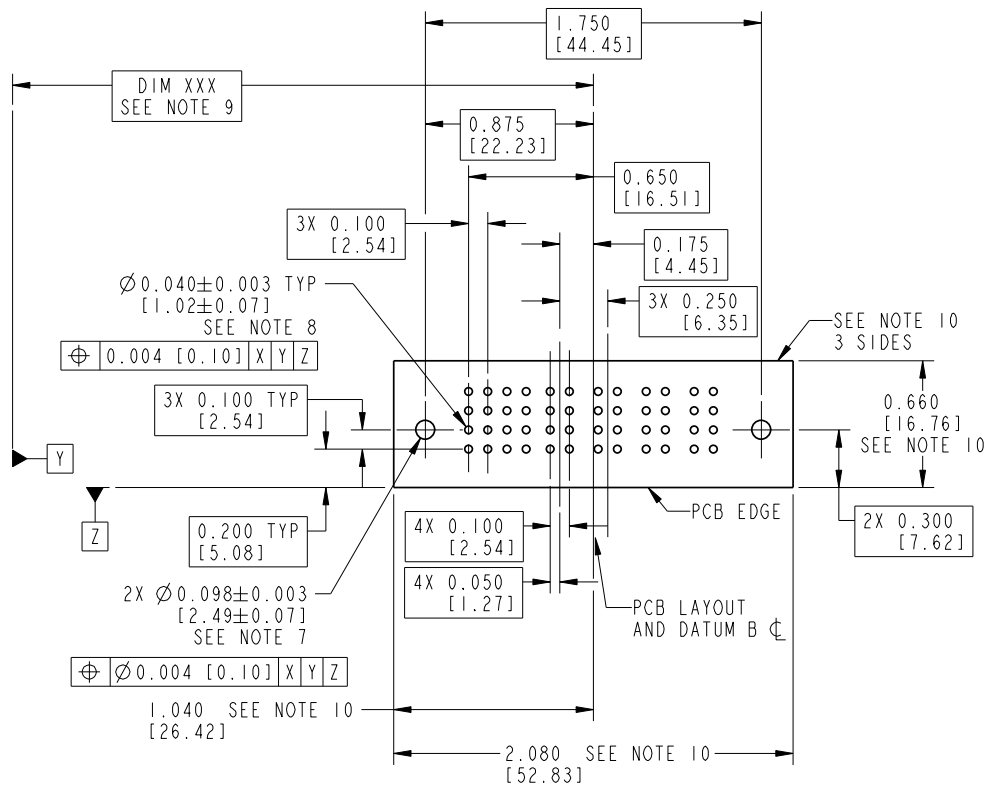
Printed: Oct 08, 2006

Tous droits strictement réservés. Reproduction ou communication o des liers interdite sous quelque forme que ce soit sans autorisation écrite du propriétaire. Propriété de c FCI. Droits de reproduction FCI.

**FCI**

All rights strictly reserved. Reproduction or issue to third parties in any form whatever is not permitted without written authority from the proprietor. Property of FCI. Copyright FCI.

PRODUCT NUMBER  
51731-029--  
NOTE ③



RECOMMENDED PCB LAYOUT

mat'l code		SEE NOTE 2		tolerances unless otherwise specified		CUSTOMER		<b>FCI</b>		www.fciconnect.com	
lir	ecn no.	dr	date	linear	.XX±.01/0.X±0.3	COPY		title		16S + 4P	
B				angles	.XXX±.005/0.XX±0.13	projection		RIGHT ANGLE SOLDER HEADER			
				dr	.XXX±.0020/0.XXX±0.051	INCH/MM		product family		PwrBlade	
				enrg	0°±2°	scale		size		213	
				chr		1:1		dwg no		sheet	
				appd				A		3 of 4	
sheet index	revision sheet							code		code	
								A		51731-029	

Pro/E

**PDM: Rev: B**

STATUS: **Released**

Printed: Oct 08, 2006

PRODUCT NUMBER

51731-029--  
NOTE ③

NOTES:

1. DIMENSIONS AND TOLERANCES ARE IN ACCORDANCE WITH ASME Y14.5M, 1994 UNLESS OTHERWISE SPECIFIED.

CONNECTOR NOTES:

HOUSING MATERIAL: UL 94 V-0 GLASS FILLED HIGH-TEMP THERMOPLASTIC  
POWER CONTACT MATERIAL: COPPER ALLOY  
SIGNAL PIN MATERIAL: COPPER ALLOY

3. PLATING:

51731-029 Signal Pin: 30u"/0.76um Au OVER 50u"/1.27um Ni ON THE CONTACT AREA.  
AND 100u"/2.54um SnPb PLATING OVER 50u"/1.27um Ni ON THE TERMINATION SECTION.  
Power Pin: 30u"/0.76um Au OVER 50u"/1.27um Ni ON THE CONTACT AREA,  
AND 100u"/2.54um SnPb PLATING OVER 50u"/1.27um Ni ON THE TERMINATION SECTION.

51731-029LF Signal Pin: 30u"/0.76um Au OVER 50u"/1.27um Ni ON THE CONTACT AREA.  
AND 78u"/2.00um Sn PLATING OVER 50u"/1.27um Ni ON THE TERMINATION SECTION.  
Power Pin: 30u"/0.76um Au OVER 50u"/1.27um Ni ON THE CONTACT AREA,  
AND 78u"/2.00um Sn PLATING OVER 50u"/1.27um Ni ON THE TERMINATION SECTION.

PART NUMBER 51731-029LF MEETS EUROPEAN UNION DIRECTIVE AND OTHER COUNTRY REGULATIONS AS DESCRIBED IN GS-22-008.

THE HOUSING WILL WITHSTAND EXPOSURE TO 260° PEAK TEMPERATURE FOR 10 SECONDS IN A WAVE SOLDER APPLICATION WITH A CIRCUIT BOARD.

4. MANUFACTURER'S NAME, P/N, AND DATE CODE TO APPEAR ON THIS SURFACE.

5. PRODUCT SPECIFICATION GS-12-149.  
APPLICATION SPECIFICATION BUS-20-067.

PCB NOTES:


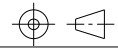
6. ALL HOLE DIAMETERS ARE FINISHED HOLE SIZE.

7. MOUNTING HOLES, WHERE APPLICABLE, ARE UNPLATED.

8. Ø.0453±.0010 [1.151±0.025] DRILLED HOLES PLATED WITH .0003 [0.008] MIN SnPb OVER .001 [0.03] TO .003 [0.08] Cu PLATING TO ACHIEVE Ø.040±.003 [1.02±.07] HOLE.

9. "DIM XXX" TO BE DETERMINED BY THE CUSTOMER.

10. CONNECTOR KEEP-OUT ZONE.

mat'l code				SEE NOTE 2		tolerances unless otherwise specified		CUSTOMER		 www.fciconnect.com	
lir	ecn no.	dr	date	linear	.XX±.01/0.X±0.3		projection	COPY		title	
B					.XXX±.005/0.XX±0.13					16S + 4P	
				angles	.XXX±.0020/0.XXX±0.051		INCH/MM	product family		code	
					0°±2°			PwrBlade		213	
				dr	STEVEN WANG	03/14/05	scale	size		sheet	
				enrg	STEVEN WANG	03/14/05		A		4 of 4	
				chr	VICTOR LIN	03/14/05		51731-029			
				appd	JOSEPH HSIA	03/14/05					
sheet index		revision sheet									

Tous droits strictement réservés. Reproduction ou communication a des tiers interdite sous quelque forme que ce soit sans autorisation écrite du propriétaire. Propriété de c FCI. Droits de reproduction FCI.

**A**  
**FCI**

All rights strictly reserved. Reproduction or issue to third parties in any form whatever is not permitted without written authority from the proprietor. Property of FCI. Copyright FCI.

**B**

**A**

**B**