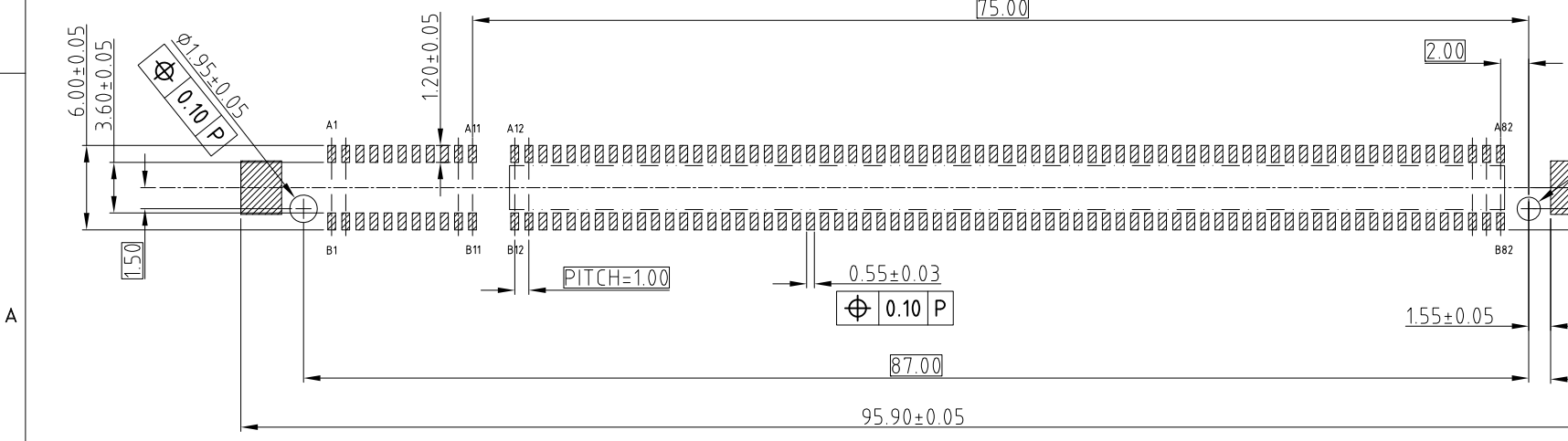
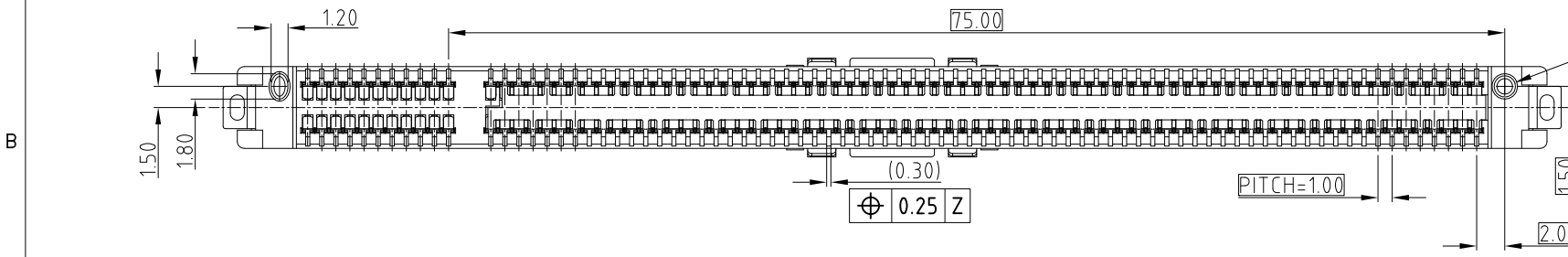
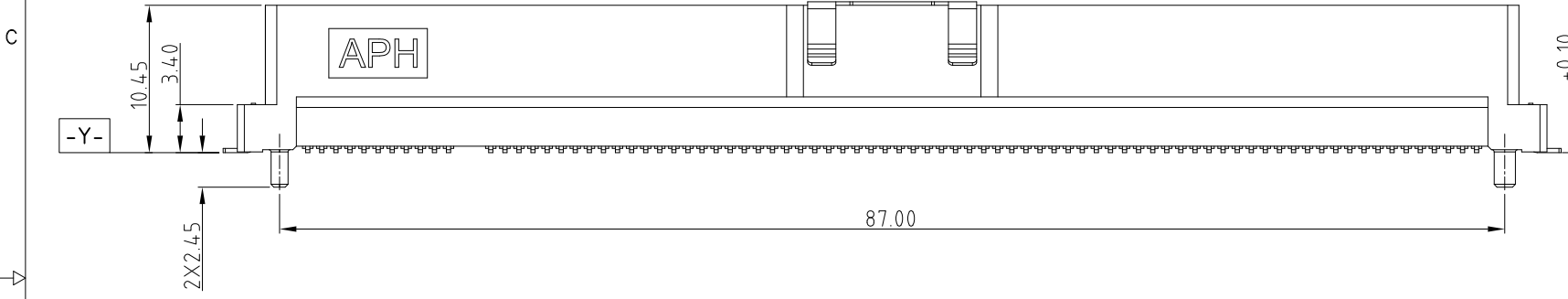
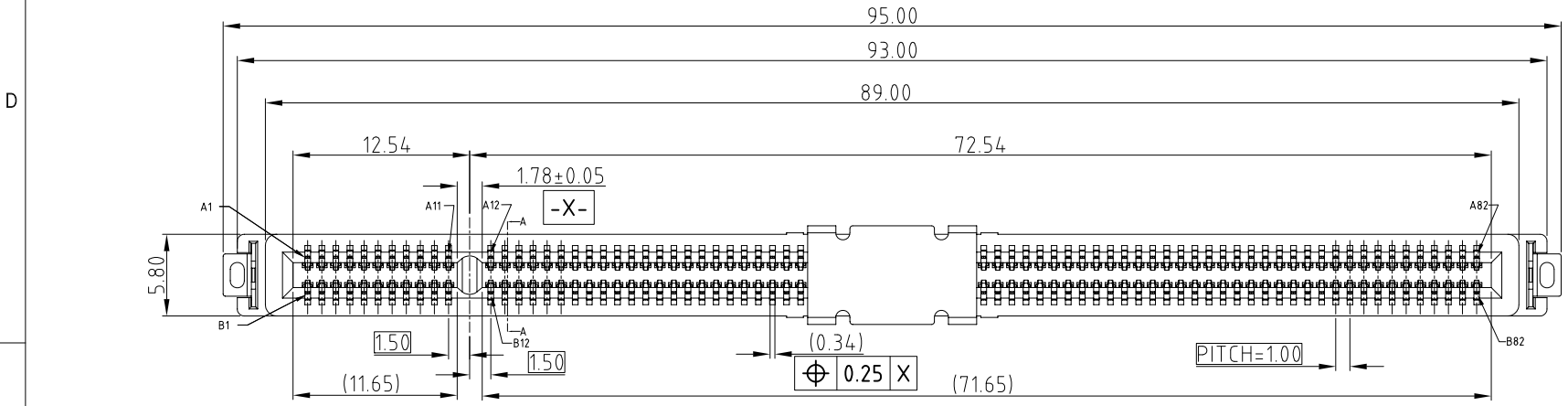


This document is the property of Amphenol Corporation and is delivered on the express condition that it is not to be disclosed, reproduced or used, in whole or in part, for manufacture or sale by anyone other than Amphenol Corporation without its prior consent, & that no right is granted to disclose or to use any information in this document.

# CUSTOMER DRAWING

REVISIONS				
SYM	ECN	DESCRIPTION	DATE	APPROVED
1	CD1445	First Proposal	Sep.06,2018	YH
2	CD1571	Change packing tray	Dec.21,2018	YH
3	CDXXXX	Update	Feb.28,2019	YH



RECOMMENDED PCB LAYOUT  
GENERAL TOLERANCE ±0.05

### PART NUMBER SYSTEM

CEE0164001403X X

- PLATING SPEC
  - 1 0.76um Au
  - 2 0.38um Au
  - 3 GOLD FLASH
- Speed
  - 0 32Gbps
  - 1 16Gbps
- Solder tails:
  - 1 STD tail and soft tray
  - 2 STD tail
  - 3 Short tail
- PIN COUNT: 164



### NOTE:

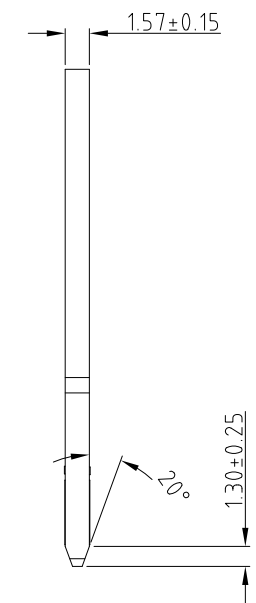
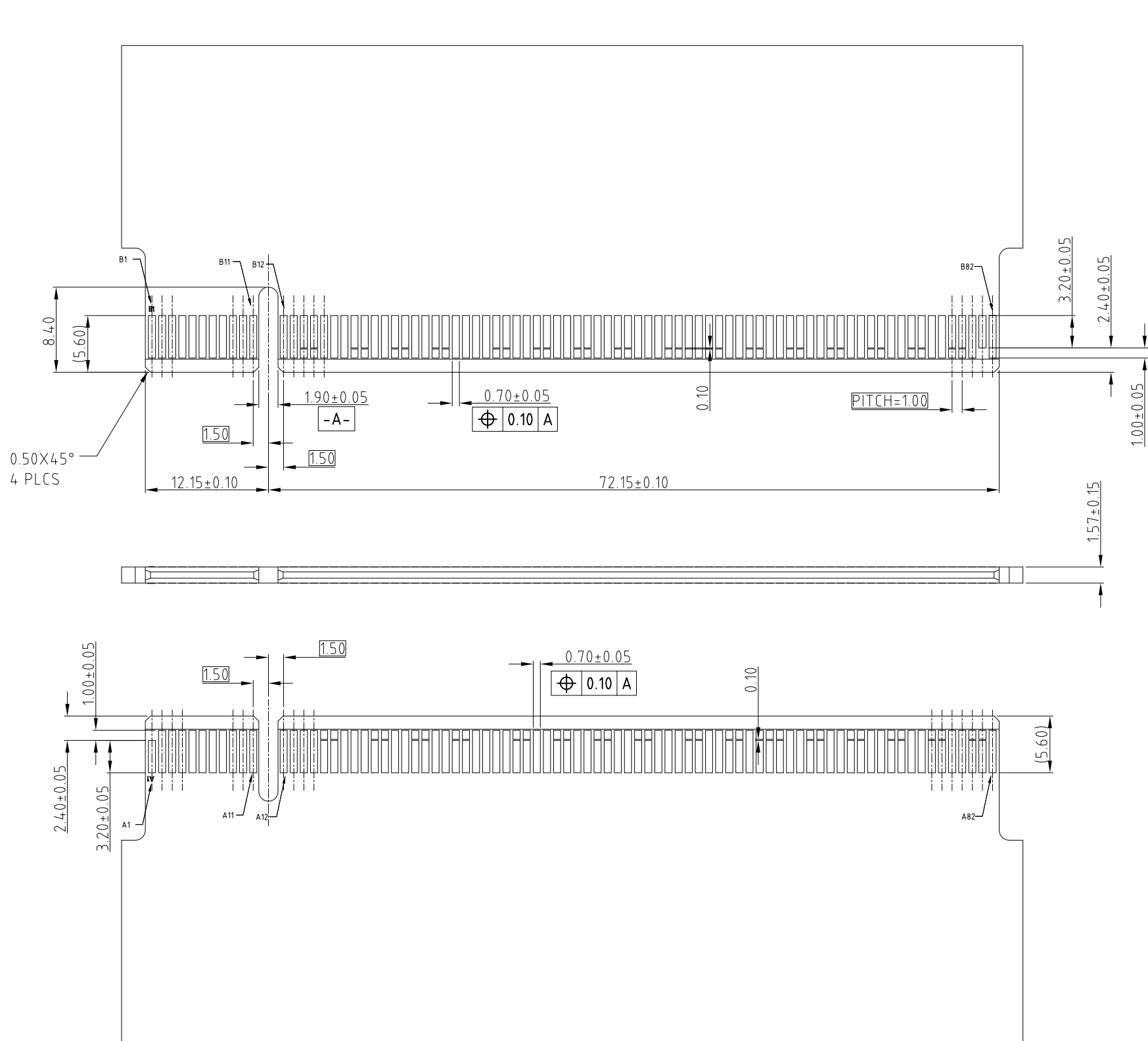
- MATERIAL:  
HOUSING: HIGH TEMPERATURE THERMOPLASTIC BLACK UL94-V0  
CONTACT: COPPER ALLOY  
BOARDLOCK: SPCC
- PLATING:  
CONTACT: MATING AREA: SEE PLATING SEPC OVER 1.27-2.54 UM NICKEL UNDERPLATED  
SOLDER AREA: 1.27 MIN TIN OVER 1.27-2.54 UM NICKEL UNDERPLATED  
BOARDLOCK: 1.27 MIN TIN OVER 1.27-2.54UM NICKEL UNDERPLATED
- ELECTRICAL PERFORMANCE:  
RATED CURRENT FOR SIGNAL PIN: 0.7A/PIN;  
RATED CURRENT FOR Power Pin:1.1A/pin(total:8pin Include:A2/A3/A9/A10/B1/B2/B3/B8 ).
- MATERIAL SHOULD BE FULLILLED AMPHENOL SPEC # SSN002
- ORDERING PN: REFER TO THE PN SYSTEM
- 25~32Gbps: THE ECB CONNECTS ALL GND PIN.  
16Gbps max: DO NOT HAVE TO CONNECTS ALL GND PIN
- MOISTURE SENSITIVITY LEVEL:1.

UNLESS OTHERWISE SPECIFIED TOLERANCES	APPROVAL	DATE	Amphenol
	DRAWN Xg.liu	Feb.28,2019	
.X +/- 0.25 .XX +/- 0.20 .XXX +/- 0.15 FRACTIONS +/- ANGLES +/- 5°	CHECKED		TITLE Cool Edge 32&16G Short tail 1.0mm pitch connector
	APPROVED		
FOR MATERIALS AND FINISHES SEE NOTES	DRAWING FILE :		SIZE
	REMOVE SHARP EDGES	INTERNAL\DRAWING\CE\ C CEE0164001403XX	DRAWING NO.
DIMENSIONS	ANGLE OF PROJECTION		REV.
—U.S.— INCHES			A3 C CEE0164001403XX 3
(METRIC) (mm)		SCALE NONE	SHEET 1 OF 3

This document is the property of Amphenol Corporation and is delivered on the express condition that it is not to be disclosed, reproduced or used, in whole or in part, for manufacture or sale by anyone other than Amphenol Corporation without its prior consent, & that no right is granted to disclose or to use any information in this document.

# CUSTOMER DRAWING

REVISIONS				
SYM	ECN	DESCRIPTION	DATE	APPROVED



GND PIN Definition	
SIDE A GND PIN	A12,A15,A18,A20,A23,A24,A27,A28,A31,A34,A37, A38,A41,A42,A45,A46,A49,A51,A54,A55,A58,A59, A62,A63,A66,A67,A70,A71,A74,A75,A78,A79,A82
SIDE B GND PIN	B13,B16,B18,B21,B22,B25,B26,B29,B32,B35,B36,B39, B40,B43,B44,B47,B49,B52,B53,B56,B57,B60,B61,B64, B65,B68,B69,B72,B73,B76,B77,B80

RECOMMENDED LAY OUT FOR MATING CARD, THICKNESS=1.57mm  
GENERAL TOLERANCE ±0.05



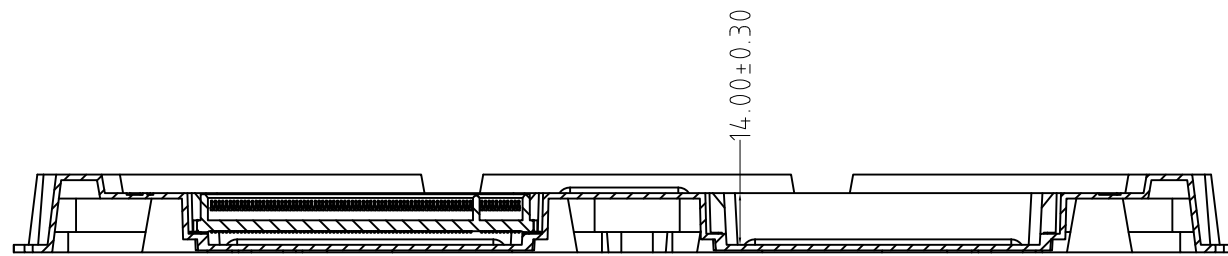
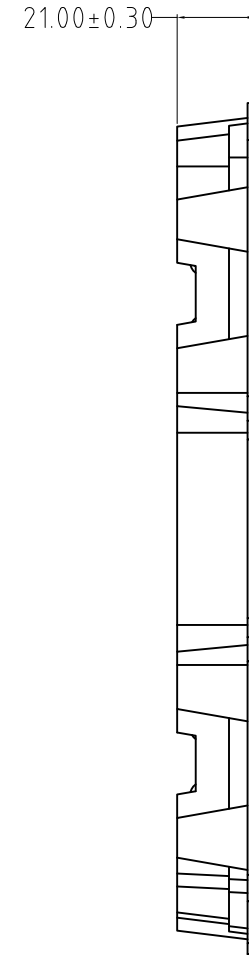
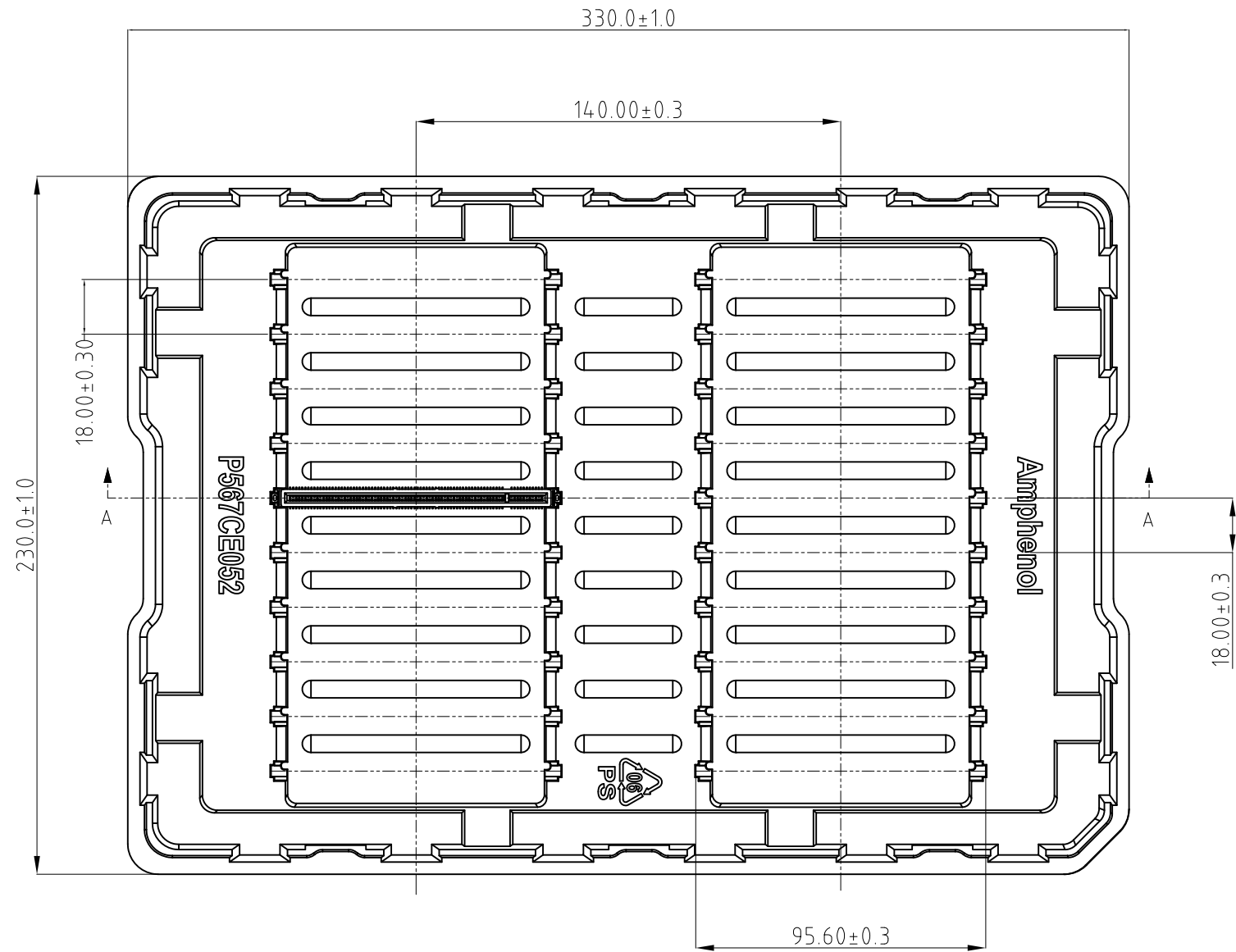
UNLESS OTHERWISE SPECIFIED TOLERANCES	
U.S.	METRIC
.X +/-	0.10
.XX +/-	0.05
.XXX +/-	0.03
FRACTIONS +/-	5°
ANGLES +/-	

APPROVAL		DATE
DRAWN	Xg.liu	Feb.28,2019
CHECKED		
APPROVED		
DRAWING FILE :		
INTERNAL\DRAWING\CE\ C CEE0164001403XX		
REMOVE SHARP EDGES		
DIMENSIONS		
—U.S.—	INCHES	
(METRIC)	(mm)	
ANGLE OF PROJECTION		

Amphenol		
TITLE		
Cool Edge 32&16G Short tail 1.0mm pitch connector		
SIZE	DRAWING NO.	REV.
A3	C CEE0164001403XX	3
SCALE	NONE	SHEET 2 OF 3

This document is the property of Amphenol Corporation and is delivered on the express condition that it is not to be disclosed, reproduced or used, in whole or in part, for manufacture or sale by anyone other than Amphenol Corporation without its prior consent, & that no right is granted to disclose or to use any information in this document.

REVISIONS				
SYM	ECN	DESCRIPTION	DATE	APPROVED



SECTION:A-A



NOTE:

1. MATERIAL: ANTI-STATIC PS ,BLACK,T=2.00±0.05mm
- △ THE MIN THICKNESS SHOULD MORE THAN 0.50mm.
3. DRAFT ANGLE 3~5°
4. NO HIT MARK,CRACK AND BRIDGE
5. INDICATE THE P/N ON THE TOP OF TRAY
6. DIMENSIONS WITH NUMBERING '⊕' MARKED SHOULD BE CHECKED IN PROCESS CONTROL (AT LEAST, NOT LIMITED TO)
7. SHOULD TO PACKING THE PRODUCT IN THE TRAY BY CHECKING
8. MATERIAL SHOULD BE FULFILLED AMPHEONL SPEC# S-SN-002
9. MATERIAL SHOULD BE FULFILLED AMPHEONL SPEC# S-SN-004

UNLESS OTHERWISE SPECIFIED TOLERANCES U.S. METRIC 16>L ±0.5 16<L<63 ±0.8 63<L<200 ±1.25 200<L<300 ±2 300<L ±3 ANGLES ±1° FOR MATERIALS AND FINISHES SEE NOTES	APPROVAL	DATE	Amphenol	
	DRAWN Xg.Ilu	Feb.28,2019		
REMOVE SHARP EDGES	CHECKED	APPROVED	TITLE	
DIMENSIONS	DRAWING FILE : INTERNAL\DRAWING\CEV C CEE0164001403XX		TRAY FOR CEE0XXX001403XX CONNECTOR	
—U.S.— INCHES (METRIC) (mm)	ANGLE OF PROJECTION		SIZE	DRAWING NO.
			A3 C	CEE0164001403XX
			SCALE	REV.
			NONE	3
			SHEET 3 OF 3	