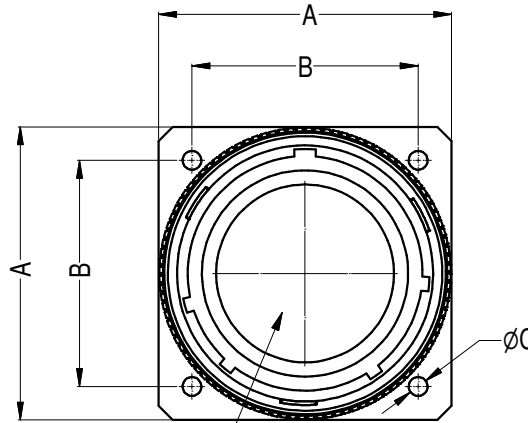
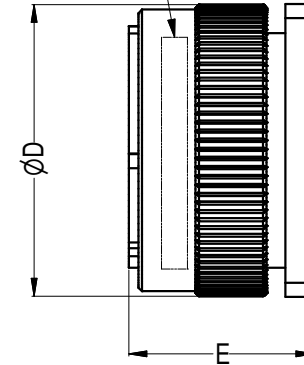


ISOMETRIC VIEW



CONTACTS NOT SHOWN
FOR No OF CONTACTS REFER TO TABLE

Amphenol LOGO & PART No.



Parts List, Dimensions in mm

ITEM	CATALOGUE P/No	Nb. OF CONTACT	A	B	DIA C	DIA D	E
1	MP-6256-39P	39	38.9	29.4	6-32UNC	39.0	26.5
2	MP-6256-61P	61	43.9	34.9	6-32UNC	45.5	26.5

NOTES:

1. MATERIAL AND FINISH: DIE CAST ALUMINUM ALLOY, BLACK FINISH
2. SUPPLIED WITH GOLD PLATED SOLDER PIN CONTACTS

CUSTOMER DRAWING

3	CHANGE FINISH TO BLACK COATING	T.N	17/02/06	8478
2	SEE CHANGE NOTE 8422	T.N	09/09/05	8422
1	CHANGE FINISH FROM PLATING TO COATING	L.V	16/04/2004	8277
0	FIRST ISSUE	T.N	6/02/2004	----
REV.	CHANGE DETAILS	BY	DATE	CHG No

UNLESS OTHERWISE SPECIFIED TOLERANCE TO BE: LINEAR: X ± N/A ANGULAR: X' ± 1		THIS DOCUMENT IS THE PROPERTY OF AMPHENOL AUSTRALIA PTY. LTD.. NO PART THEREOF MAY BE REPRODUCED AND USED WITHOUT THE PRIOR WRITTEN CONSENT OF THE OWNER				CAD FILE: 55010270000213		DRN: T.N	DATE: 6/02/2004	TITLE: PANEL PLUG WITH PIN SOLDER CONTACTS	Amphenol Amphenol Australia Pty Ltd, 2 Fiveways Blvd, Keysborough, Vic3173
BREAK ALL SHARP EDGES AND REMOVE ALL BURRS		MATL: SEE NOTE 1	CKD: P.M	DATE: 20/02/06	DO NOT SCALE		APP'D: P.M	DATE: 20/02/06			
DIMENSIONS IN MILLIMETRES		FINISH: SEE NOTE 1	SCALE: N/A	PART No: SEE TABLE	SIZE: A4		DRAWING NO: 55010270-000-2		SHEET: 2/2		
THIRD ANGLE PROJECTION		SCALE: N/A		PART No: SEE TABLE		DRAWING NO: 55010270-000-2		SHEET: 2/2			