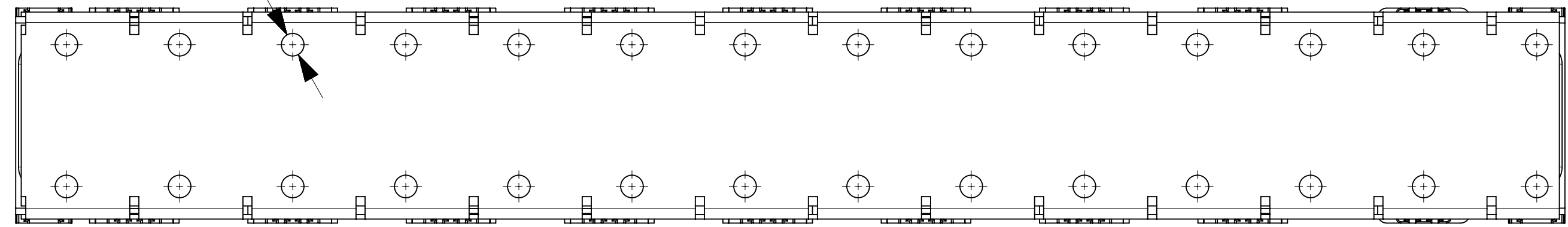
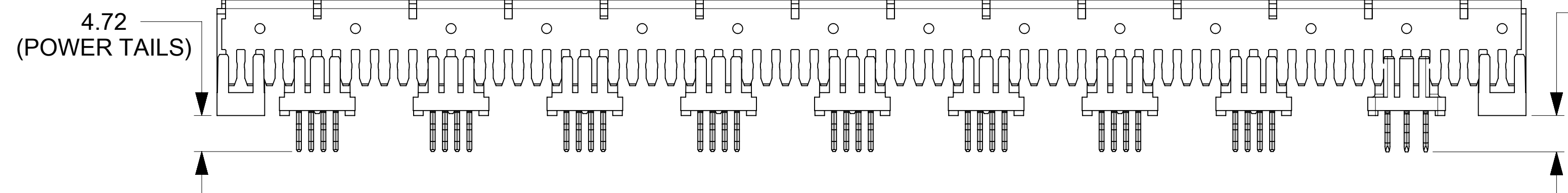


AFTER PRESS TO PCB
AND RAIL REMOVAL

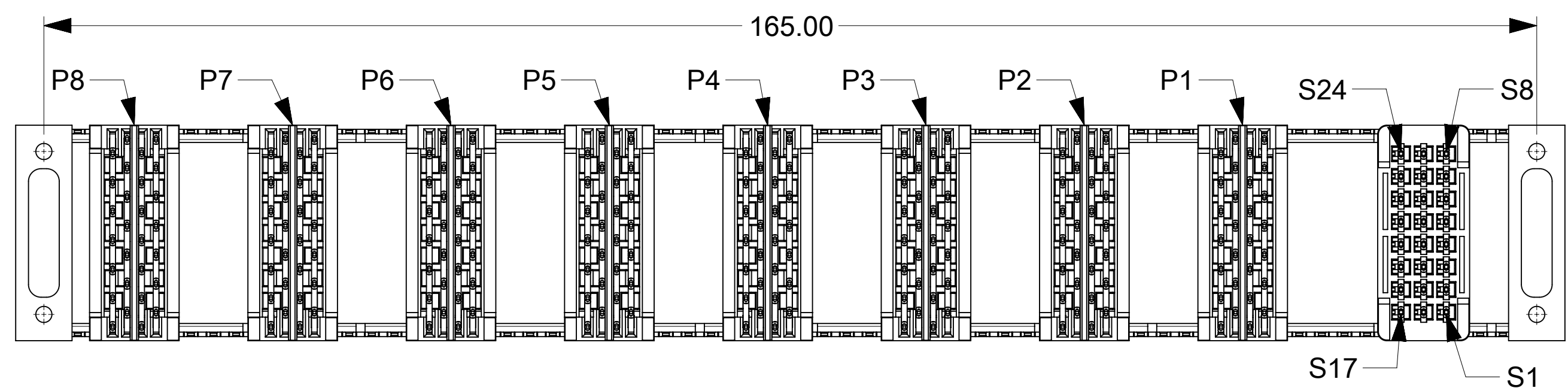
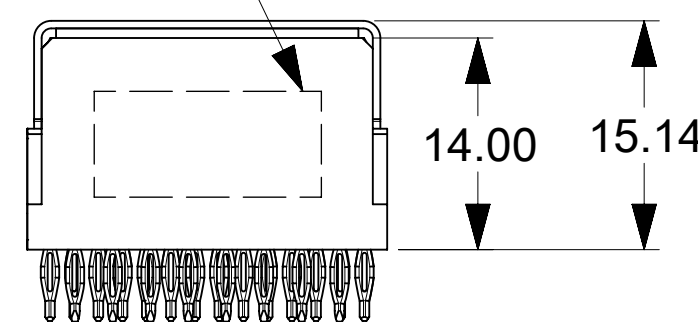
Ø2.50
PILOT HOLES FOR
MODULE MOUNTING RAIL
REMOVAL TOOL
SEE NOTE 8



BEFORE RAIL REMOVAL
(AS DELIVERED)



PART NUMBER
AND DATE CODE



NOTES:

1. MATERIAL:

- HOUSINGS: HIGH TEMPERATURE PLASTIC (LCP OR EQUIVALENT)
- TERMINALS: HIGH CONDUCTIVITY COPPER ALLOY
- PLATING: 1.27µm NICKEL OVERALL WITH
2.54µm SELECTIVE TIN ON SOLDER TAILS AND
0.76µm SELECTIVE GOLD ON CONTACT AREA
- ALIGNERS: ZINC DIE CAST WITH CLEAR CHROMATE FINISH
- RAILS: STAINLESS STEEL
- LUBRICATION: EB-1 IN CONTACT AREA

2. MODULES ARE ASSEMBLED TO RAILS

3. PACKAGING: ASSEMBLIES TO BE TRAY PACKED PER PACKAGING SPEC PK-75541-100

4. INDIVIDUAL MODULES ARE RATED FOR VOLTAGE AND CURRENT RATINGS PER PS-75431-999

5. PC BOARD REQUIRES PRESS FIT HOLES, SEE PC BOARD LAYOUT IN SHT 2.

6. RECOMMENDED PC BOARD THICKNESS, 3.18mm MIN.

7. PRODUCT TO MEET RoHS REQUIREMENTS.

8. MODULE MOUNTING RAIL TO BE REMOVED AFTER PRESSING THE ASSEMBLY
INTO THE PC BOARD WITH TOOL PER APPLICATION SPEC AS-75541-100

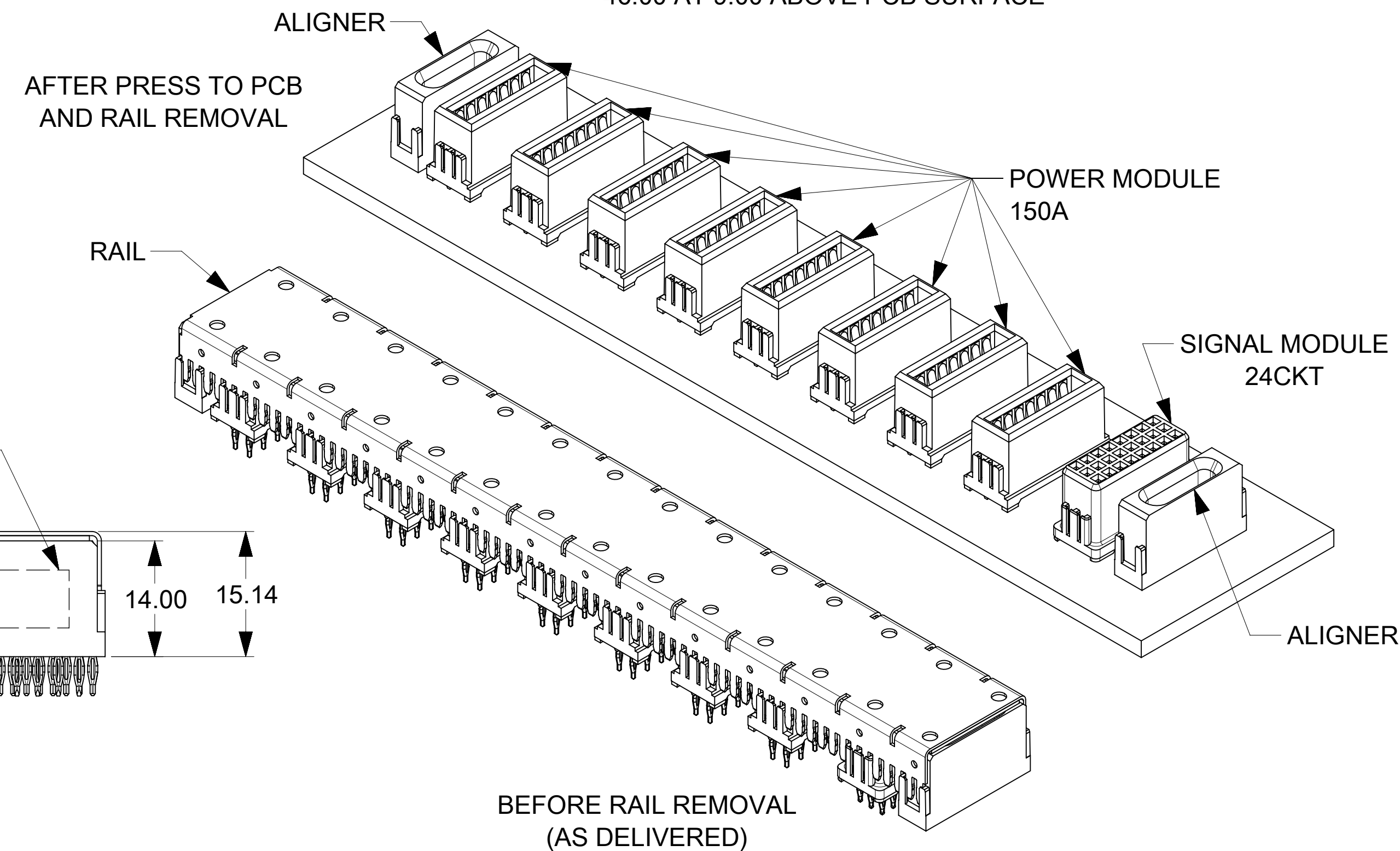
9. RECEPTACLE MATES TO MOLEX PLUG P/N 75555-1065.

10. PLATED THRU HOLE (PTH) DIMENSIONS: $\phi 1.09 \pm 0.05$ FINISHED PTH (TYP)
 $\phi 1.200 \pm 0.013$ DRILL
0.025MIN COPPER PLATE THICKNESS

11. ALIGNER MODULE SCREWS DELIVERED WITH CONNECTOR ASSEMBLY (4 PER ASSY)
#2-56UNC-2A, ZINC PLATED STEEL, 9.5 LONG, 4.2 DIA PAN HEAD TORX DRIVE.
(MOLEX P/N 73774-4005). RECOMMENDED TORQUE: 0.20 N-m.

12. THE SCREW LENGTH AND P/N IS RECOMMENDED BASED ON 3.18mm PCB THICKNESS
CONTACT MOLEX FOR SCREW LENGTH AND P/N FOR PCB THICKNESS GREATER THAN 3.18mm.

13. MINIMUM KEEP OUT ZONE DIMENSION 'A': 25.00 ON PCB SURFACE
26.00 AT 3.50 ABOVE PCB SURFACE
46.00 AT 9.00 ABOVE PCB SURFACE



BEFORE RAIL REMOVAL
(AS DELIVERED)

THIS DRAWING CONTAINS INFORMATION THAT IS PROPRIETARY TO MOLEX ELECTRONIC TECHNOLOGIES, LLC AND SHOULD NOT BE USED WITHOUT WRITTEN PERMISSION

DIMENSION UNITS	SCALE	CURRENT REV DESC: PRODUCT RELEASE						
mm	NTS							
GENERAL TOLERANCES (UNLESS SPECIFIED)				ASSEMBLY, VERT RECEP, PRESS-FIT 1X24S, 8X150A EXTREME POWERMASS				
ANGULAR TOL $\pm 0.5^\circ$				PRODUCT CUSTOMER DRAWING				
4 PLACES	\pm	EC NO: 672363	2021/07/27	DOCUMENT NUMBER				
3 PLACES	\pm	DRWN: KSUTAR	2021/08/04	DOC TYPE DOC PART REVISION				
2 PLACES	± 0.25	CHK'D: SCS02	2021/08/09	755411065 PSD 000 A				
1 PLACE	± 0.38	APPR: HTHYAGARAJ		MATERIAL NUMBER CUSTOMER				
0 PLACES	\pm	INITIAL REVISION:		SHEET NUMBER				
DRAFT WHERE APPLICABLE MUST REMAIN WITHIN DIMENSIONS		THIRD ANGLE PROJECTION	DRAWING	SERIES	755411065 GENERAL MARKET			1 OF 2
			D-SIZE	75541				

RECEPTACLE ASSEMBLY
P/N: 75541-1065

BACKPLANE

HEADER ASSEMBLY
P/N: 75555-1065

DAUGHTERCARD

DAUGHTERCARD

BACKPLANE

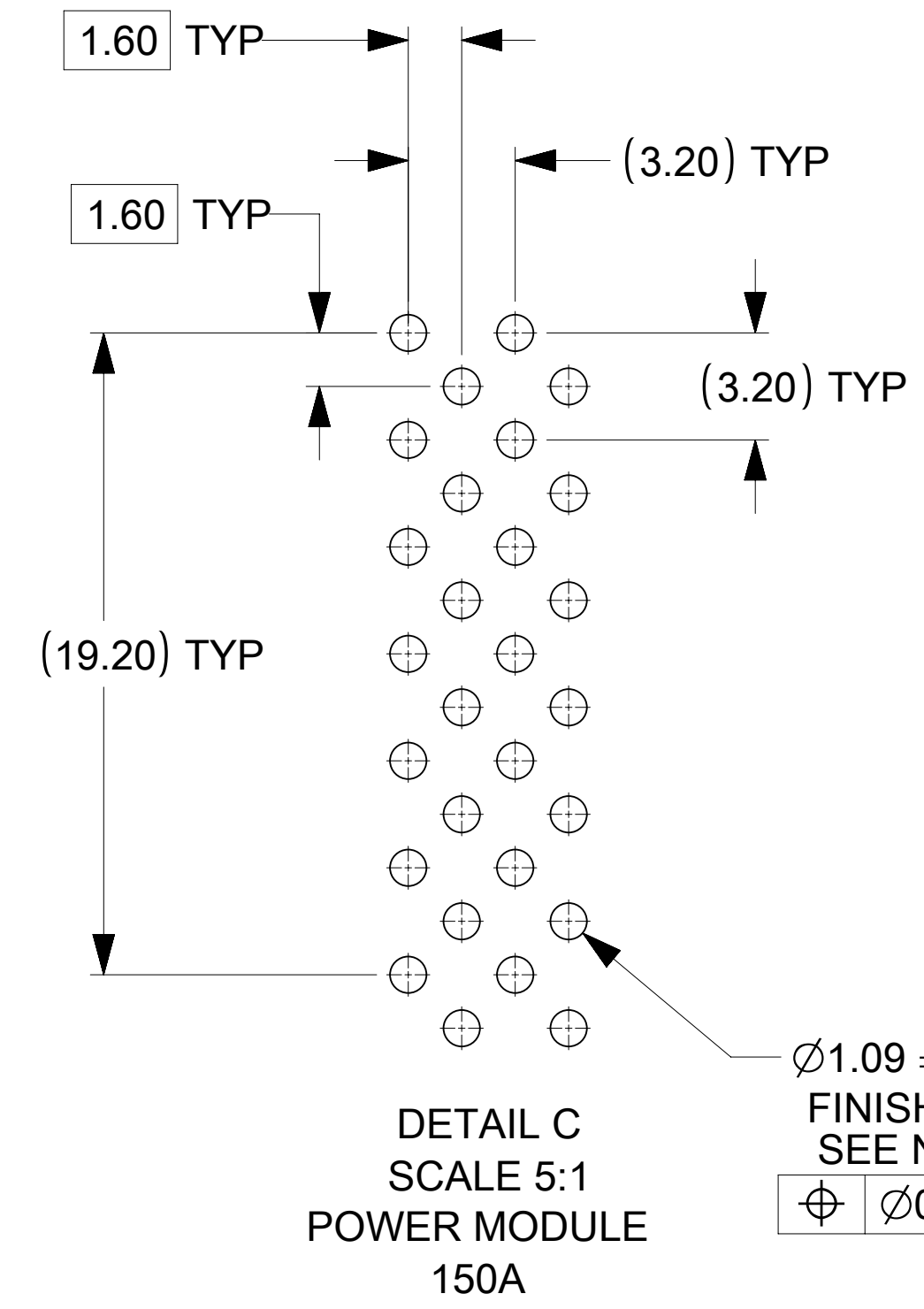
(1.60)

SECTION A-A

1.55
C OF HOLE TO
TOP OF DAUGHTERCARD

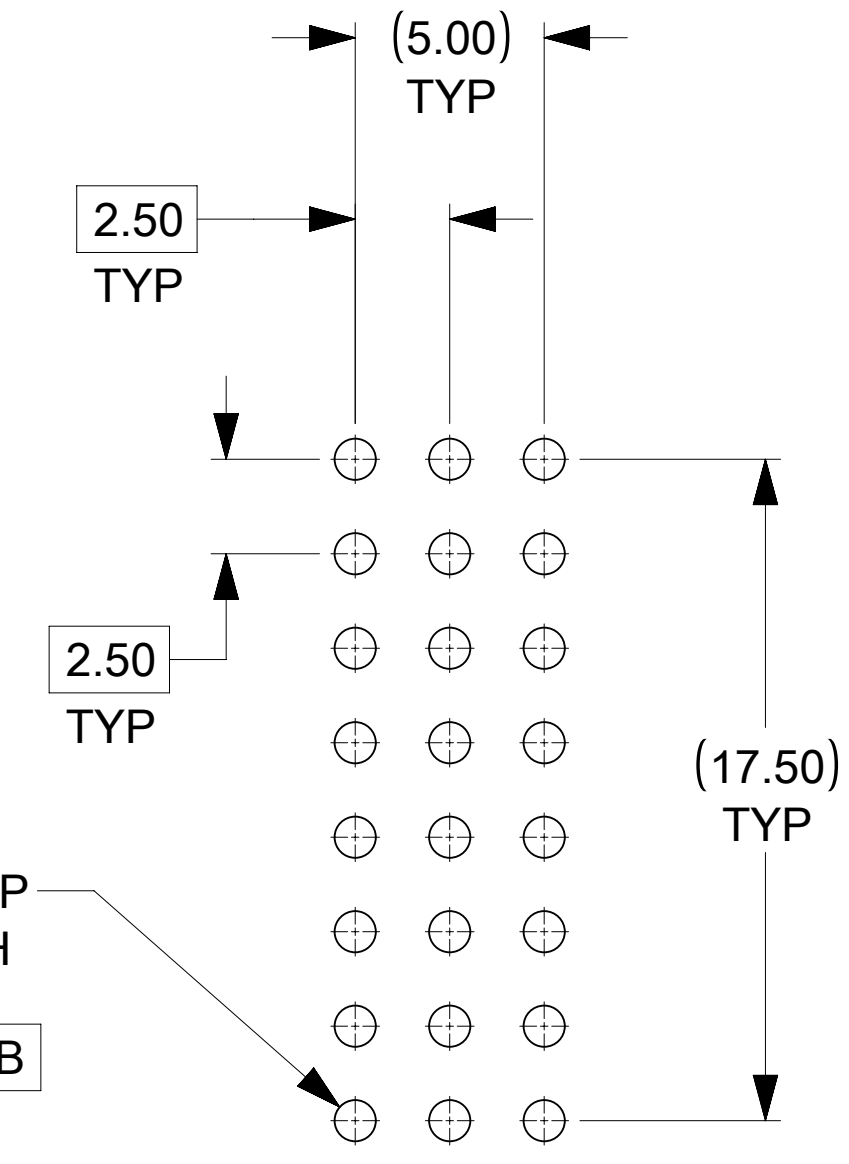
OF FIRST ROW OF
POWER PINS

17.05
(AT NOMINAL MATING DEPTH)
16.45
(AT MAX MATING DEPTH)



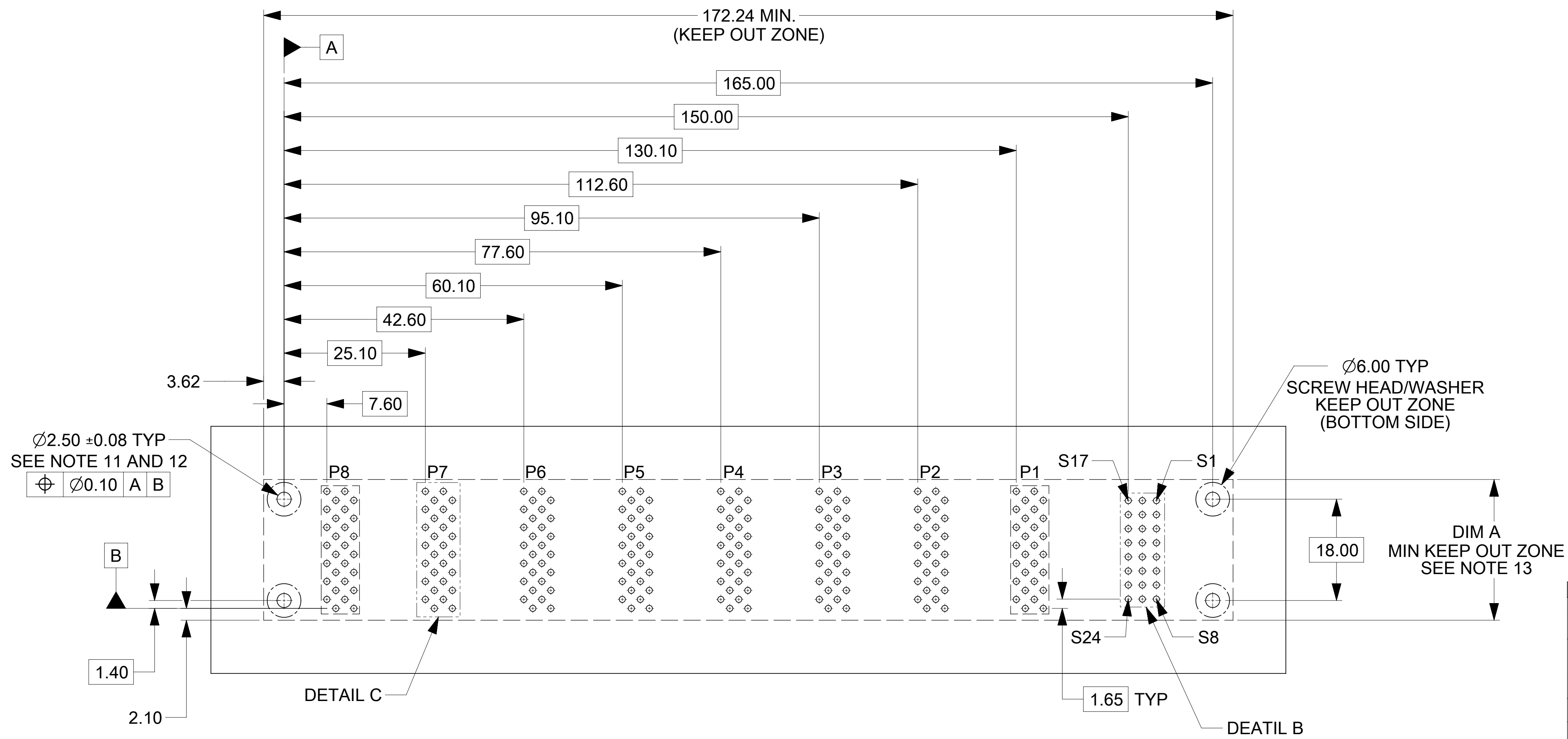
DETAIL C
SCALE 5:1
POWER MODULE
150A

Ø	Ø1.09 ±0.05 TYP	FINISHED PTH	SEE NOTE 10
Ø	Ø0.05	A	B



DETAIL B
SCALE 5:1
SIGNAL MODULE
24 PINS

Ø	Ø1.09 ±0.05 TYP	FINISHED PTH	SEE NOTE 10
Ø	Ø0.05	A	B



RECOMMENDED PCB LAYOUT AND KEEP-OUT ZONE
GENERAL TOLERANCE: ±0.05

THIS DRAWING CONTAINS INFORMATION THAT IS PROPRIETARY TO MOLEX ELECTRONIC TECHNOLOGIES, LLC AND SHOULD NOT BE USED WITHOUT WRITTEN PERMISSION															
DIMENSION UNITS		SCALE		CURRENT REV DESC: PRODUCT RELEASE											
mm		NTS													
GENERAL TOLERANCES (UNLESS SPECIFIED)															
ANGULAR TOL ± 0.5°															
4 PLACES		±		EC NO: 672363		2021/07/27									
3 PLACES		±		DRWN: KSUTAR		2021/08/04									
2 PLACES		± 0.25		APPR: HTHYAGARAJ		2021/08/09		ASSEMBLY, VERT RECEP, PRESS-FIT 1X24S, 8X150A EXTREME POWERMASS							
1 PLACE		± 0.38		INITIAL REVISION:				PRODUCT CUSTOMER DRAWING							
0 PLACES		±		DRWN: KSUTAR		2021/07/27		DOCUMENT NUMBER		DOC TYPE		DOC PART		REVISION	
				APPR: HTHYAGARAJ		2021/08/09		755411065		PSD		000		A	
DRAFT WHERE APPLICABLE MUST REMAIN WITHIN DIMENSIONS		THIRD ANGLE PROJECTION		DRAWING		SERIES		MATERIAL NUMBER		CUSTOMER		SHEET NUMBER			
				D-SIZE		75541		755411065		GENERAL MARKET		2 OF 2			