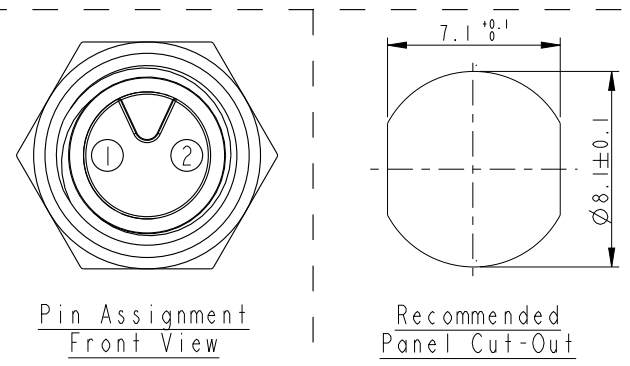
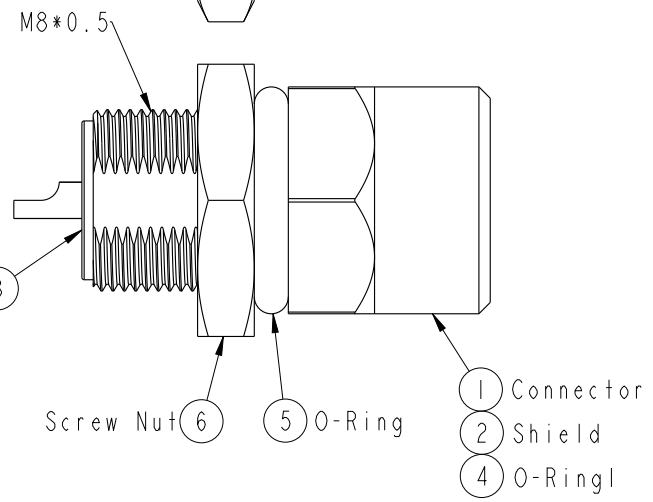
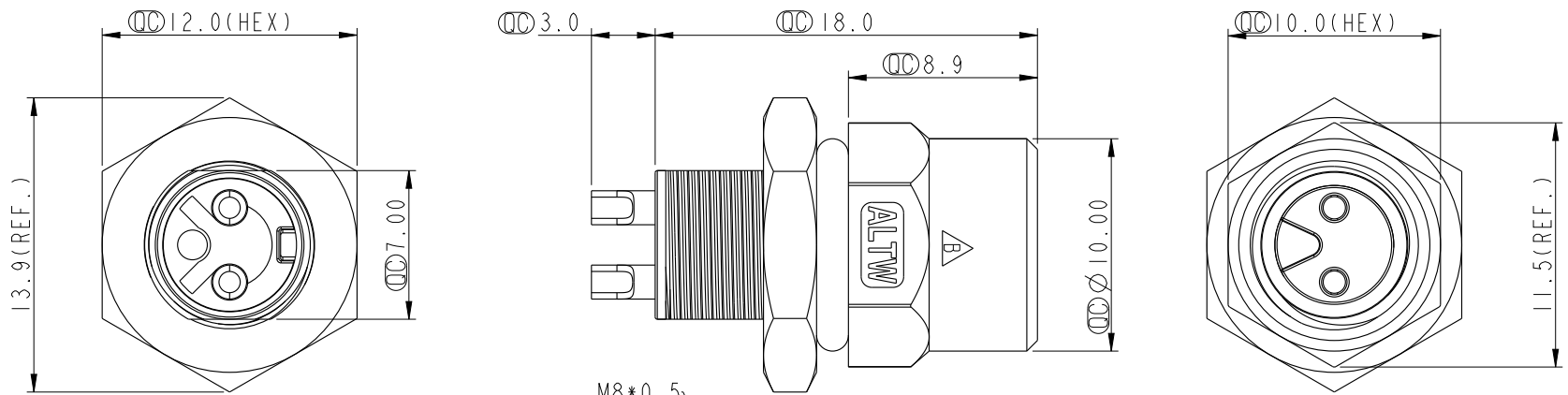


THIS DOCUMENT IS SUBJECT TO CHANGE WITHOUT NOTICE. IT IS CONFIDENTIAL AND A PROPERTY OF AMPHENOL LTW. DISCLOSURE TO THIRD PARTY HAS TO BE AUTHORIZED BY AMPHENOL LTW.

REV.	ECN NO.	DATE	SIGN	DESCRIPTION
B	C191918	2019/10/31	JC Chen	△ XI



Note:  
 \* ⌀ Important Dimension.  
 \* Waterproof Rate: IP67.  
 \* Housing: Nylon+GF, Black.  
 \* Female Pin: Copper Alloy, Gold Plated.  
 \* Shield: Zinc Alloy, Nickel Plated.  
 \* Screw Nut: Copper Alloy, Nickel Plated.  
 \* O-Ring1: Viton, Green.  
 \* O-Ring2: EPDM, Black.  
 \* For Panel Thickness Max 4.5mm.  
 \* Nut Torque: 4~6 kgf.cm.

UNIT: mm		TITLE		<b>Amphenol LTW</b> 安費諾亮泰企業股份有限公司	ITEM NO	DRAWN BY	DATE
		M8 2Pin Panel F Conn. F Pin			8A-02PFFS-SH7001	Mila	2014-02-10
TOLERANCE		SCALE	SIZE		DWG NO	CHECKED BY	DATE
.X ±0.25		3:1	A4		8A-02PFFS-SH7001	Jimmy	2014-02-10
.XX ±0.1		REV.	WC-REV.		CUSTOMER	APPROVED BY	DATE
.XXX ±0.05		B	A.6	⌀: Inspection item	ALTW	Jerry	2014-02-10
ANGLES ±1°							