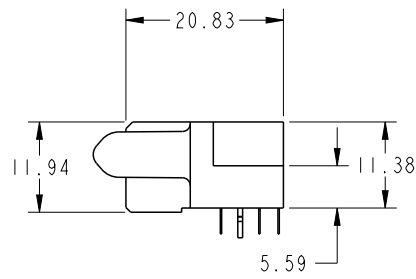
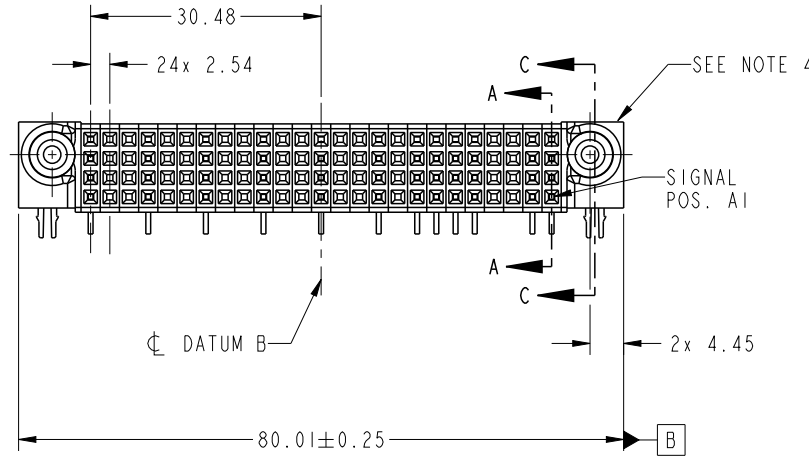
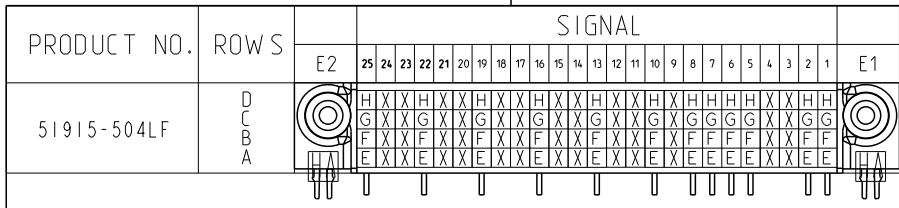


1

2

3

4



CODE	DIM "M" MATING LENGTH	CONTACT TYPE
H	[N/A]	SIGNAL
G	[N/A]	SIGNAL
F	[N/A]	SIGNAL
E	[N/A]	SIGNAL
HA	[N/A]	HOLD-DOWN
X	[N/A]	OMITTED



Copyright FCI.

spec ref	SEE NOTES		
tolerance std	TOLERANCES UNLESS OTHERWISE SPECIFIED		
SEE NOTES	linear	0.X	±0.50
		0.XX	±0.25
		0.XXX	±0.10
	angular	0°	±2°

dr	Ruan MT	2015/06/29
eng	Ruan MT	2015/07/14
chr	Fancy Zhang	2015/07/14
appr	Pei-Ming Zheng	2015/07/14



title	100S
	R/A STB RECEPTACLE
cat. no.	

projection	MM	size	A4	scale	1:1
product family	PwrBlade		rel level	Released	

dwg no	51915-504	rev	A
Product - Customer Drw		sheet 1 of 4	

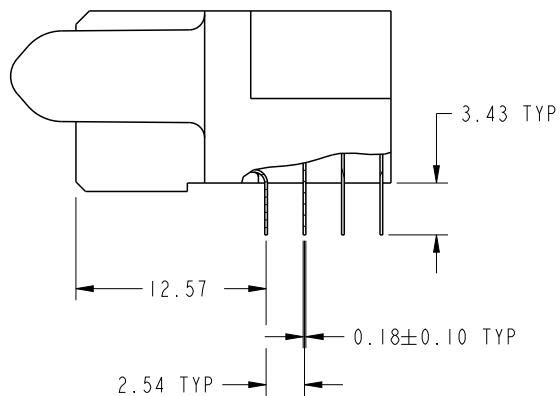
ProdE File - REV C - 2009-06-09

2

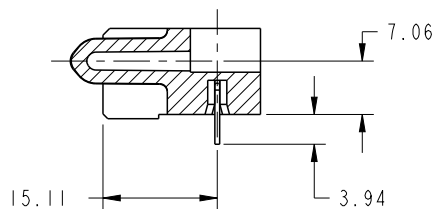
3

PRODUCT NUMBER

51915-504LF



BROKEN-OUT SECTION A-A
SCALE 2:1



SECTION C-C

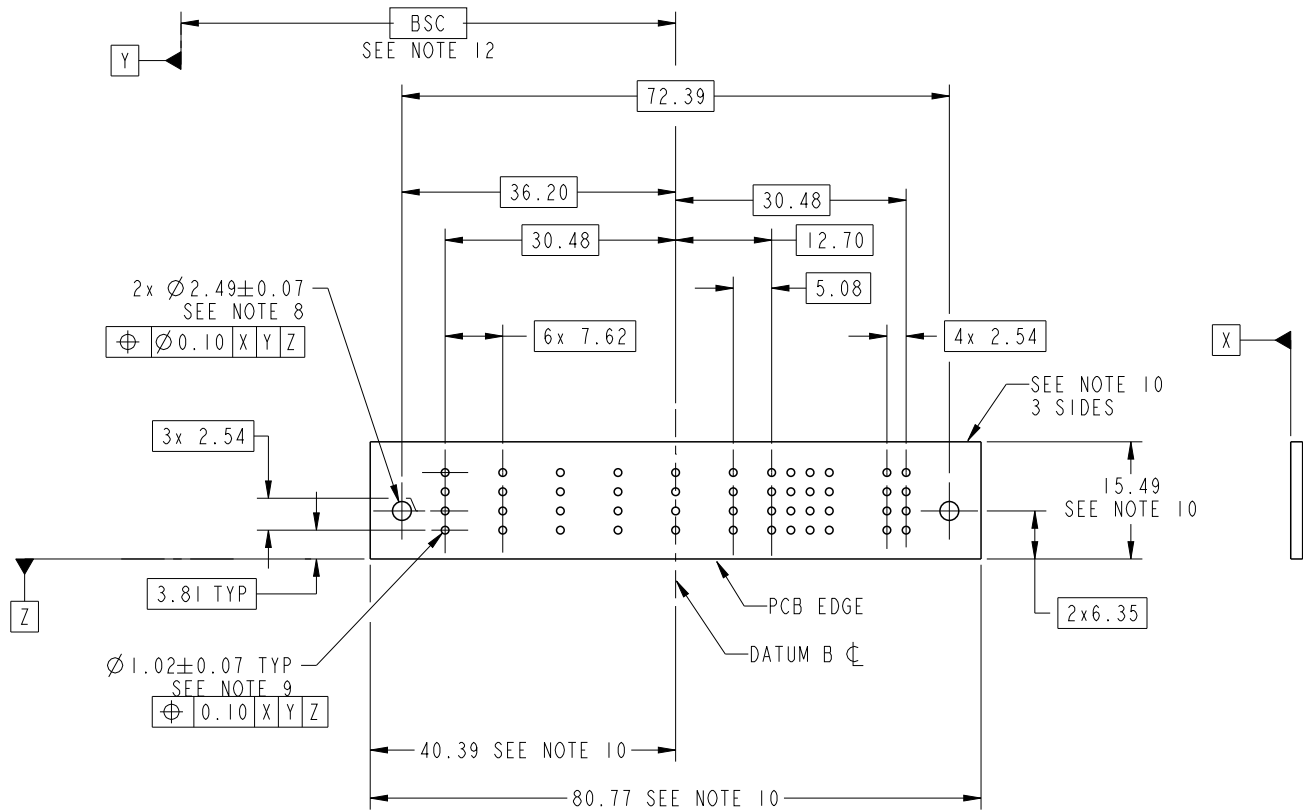
dr	Ruan MT	2015/06/29	projection 	MM ←————→	size	A4	scale	1:1		
eng	Ruan MT	2015/07/14			ecn no	-				
chr	Fancy Zhang	2015/07/14			product family	PwrBlade	rel level	Released		
appr	Pei-Ming Zheng	2015/07/14	www.fci.com		title	100S R/A STB RECEPTACLE	dwg no	51915-504	rev	A
cat. no.		Product - Customer Drw			sheet 2 of 4					



Copyright FCI.

PRODUCT NUMBER

51915-504LF



RECOMMENDED PCB LAYOUT



Copyright FCI.

dr	Ruan MT	2015/06/29	projection 	MM 	size	A4	scale	1:1
eng	Ruan MT	2015/07/14			ecn no	-		
chr	Fancy Zhang	2015/07/14			rel level	Released		
appr	Pei-Ming Zheng	2015/07/14	product family	PwrBlade				
		title 100S R/A STB RECEPTACLE	dwg no 51915-504	rev A				
www.fci.com		cat. no.	Product - Customer Drw			sheet 3 of 4		

PrdE File - REV C - 2009-06-09

PRODUCT NUMBER

51915-504LF

NOTES:

1. DIMENSIONS AND TOLERANCES ARE IN ACCORDANCE WITH ASME Y14.5M, 1994 UNLESS OTHERWISE SPECIFIED.

CONNECTOR NOTES:

2. HOUSING MATERIAL: UL 94 V-0 GLASS FILLED HIGH-TEMP THERMOPLASTIC
POWER CONTACT MATERIAL: COPPER ALLOY
SIGNAL PIN MATERIAL: COPPER ALLOY

3. SEE FCI PLATING SPEC 10064183.

4. MANUFACTURER'S NAME, DATE CODE AND OPTIONAL P/N TO APPEAR ON THIS SURFACE. THE MARK CAN BE OMITTED IF THERE IS NOT ENOUGH SPACE ON THIS SURFACE.

5. PRODUCT SPECIFICATION GS-12-149.
APPLICATION SPECIFICATION BUS-20-067.

6. PACKAGED IN TRAYS.

PCB NOTES:

7. ALL HOLE DIAMETERS ARE FINISHED HOLE SIZE.

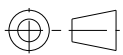
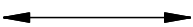

8. MOUNTING HOLES, WHERE APPLICABLE, ARE UNPLATED.

9. $\varnothing 1.151 \pm 0.025$ DRILLED HOLES PLATED WITH
0.008 MIN SnPb OR Sn OVER 0.03
TO 0.08 Cu PLATING TO ACHIEVE
 $\varnothing 1.02 \pm .07$ HOLE.

10. CONNECTOR KEEP-OUT ZONE.

11. THE VOID CORING IN BETWEEN POWER MODULES, SIGNAL MODULES AND END MODULES ARE OPTIONAL AND THE SHAPE MAY BE DIFFERENT FOR OPTIMIZE THE MOLDING PROCESS. THE VOID CORING WILL NOT EFFECT TO PRODUCT FUNCTION.

12. DATUM AND BASIC DIMENSIONS ARE ESTABLISHED BY CUSTOMER.

dr	Ruan MT	2015/06/29	projection 	MM 	size	A4	scale	1:1
eng	Ruan MT	2015/07/14			ecn no	-		
chr	Fancy Zhang	2015/07/14			product family	PwrBlade	rel level	Released
appr	Pei-Ming Zheng	2015/07/14			rev	51915-504	A	
		title	100S R/A STB RECEPTACLE		cat. no.	Product - Customer Drw		
www.fci.com				sheet 4 of 4				