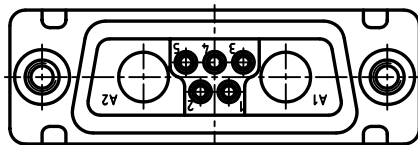
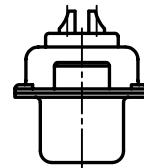
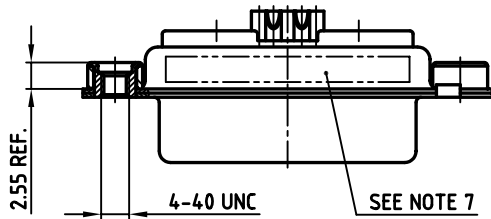
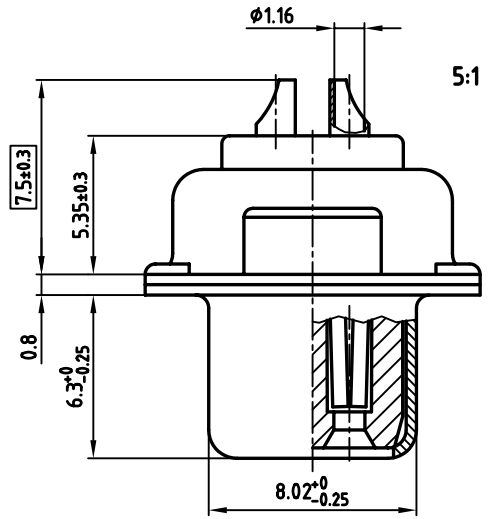
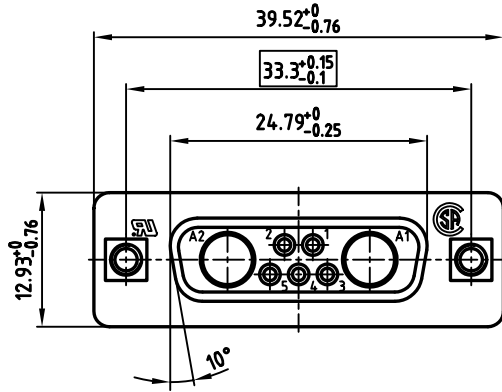


used for: D-SUB COMBINATION



NOTES:

1. METALSHELLS: STEEL; min. 320 µ" TIN
2. INSULATORS: PBT GF, UL 94 V-0; GREEN
3. CONTACTS: COPPER ALLOY
PLATING: MIN. 30µ" HARD GOLD OVER MIN. 50µ" NICKEL
SOLDER CUP ACCEPTS CABLE AWG 20
4. THREADED INSERT: COPPER ALLOY; min. 200µ" TIN over 80µ" NICKEL
5. COLLAR: COPPER ALLOY; min. 200µ" TIN over 80µ" NICKEL
6. MAXIMUM TORQUE VALUE FOR THREAD: 6" LBS
7. CONNECTOR IS PART MARKED: 3007W2SCM99A30X CONEC Y/WW
8. = CRITICAL DIMENSION

Directive 2002/95/EC
 „RoHS“
 Compliant

THIS DRAWING MAY NOT BE COPIED OR REPRODUCED IN ANY WAY, AND MAY NOT BE PASSED ON TO A THIRD PARTY, WITHOUT WRITTEN PERMISSION.
 OWNERSHIP AND COPYRIGHT OF CONEC GmbH
DO NOT ALTER CAD DRAWING BY HAND

rev.	description	date	name

tolerance		scale:	2:1 (5:1)
		material:	SEE NOTES
2002	date	name	D-SUB COMBINATION FEMALE 7W2S SOLDER CUP with threaded insert
drawn	11.11.	Parei	
appd.	11.11.	Kühle	
norm			
d-old			
dwg no:		AutoCAD 2000	DIN-A
		13K2A691	3
part no:		3007W2SCM99A30X	
		sh: 1/1	

