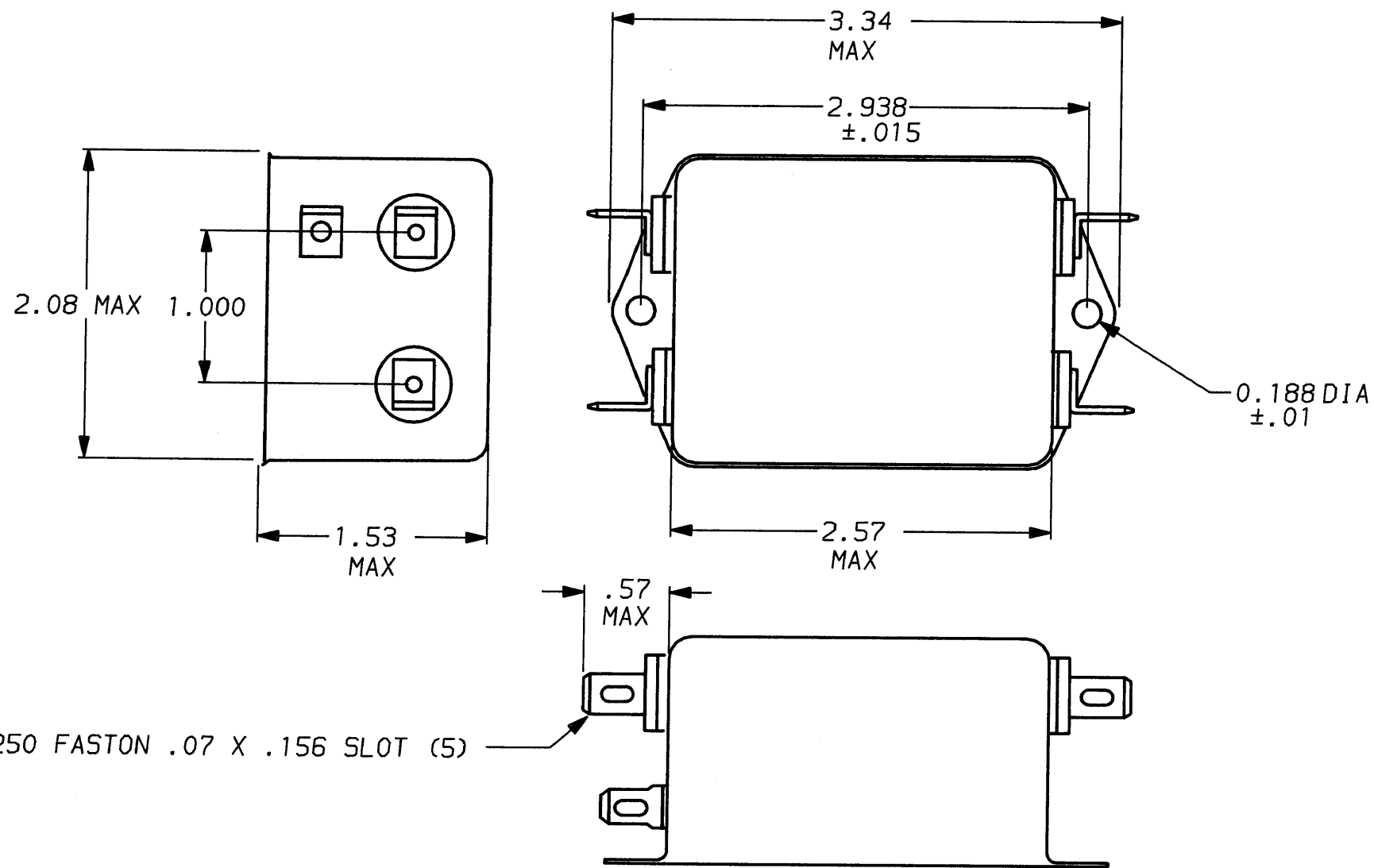


DESCRIPTION	APP'D./DATE	REV
C. Westub	8-2-90	4
ECO-09-026495	AEG/05DEC09	5



SAFETY ORGANIZATION(S):

THIS FILTER HAS BEEN FORMALLY RECOGNIZED, CERTIFIED OR APPROVED BY THE LISTED AGENCY. THEREFORE, ALL TEST/REQUIREMENTS SPECIFIED IN THE LATEST REVISION OF THE FOLLOWING AGENCY STANDARDS HAVE BEEN MET:

UL RECOGNIZED	UL 1283
OPERATING SPECIFICATIONS:	
LINE VOLTAGE/CURRENT:	10 AMP., 120/250 VAC
LINE FREQUENCY:	50-60Hz
MAX. CASE RISE @ RATED CURRENT:	40°C
MAX. LEAKAGE CURRENT, EACH LINE TO GROUND	0.5mA at 120V 60 Hz 1.0 mA at 250V 50 Hz
OPERATING AMBIENT TEMP. RANGE:	-10°C TO +40°C @ RATED CURRENT, I _r

IN AN AMBIENT, T_a, HIGHER THAN 40°C, THE MAXIMUM OPERATING CURRENT, I_o, IS AS FOLLOWS:

$$I_o = I_r \sqrt{\frac{85 - T_a}{45}}$$

RELIABILITY SPECIFICATIONS:

STORAGE TEMPERATURE:	-40°C TO +85°C
HUMIDITY:	21 DAYS @ 40°C 95% RH
CURRENT OVERLOAD TEST:	6 TIMES RATED CURRENT FOR 8 SECONDS

TEST SPECIFICATIONS:

INDUCTANCE:	1.25 mH NOMINAL
CAPACITANCE: (MEASURED @ 1 KHz, 0.25 VAC MAX., 25°C ±1°C)	
LINE TO GROUND:	.013µF ±20%
LINE TO LINE:	.813µF ±20%
DISCHARGE RESISTOR:	330 KΩ
LINE/GROUND AND LINE/LINE INSULATION RESISTANCE (W/O DISCHARGE RESISTOR)	6000 MΩ (MIN) AT 100 VDC 20°C AND 50% RH

RECOMMENDED RECEIVING INSPECTION HIPOT:

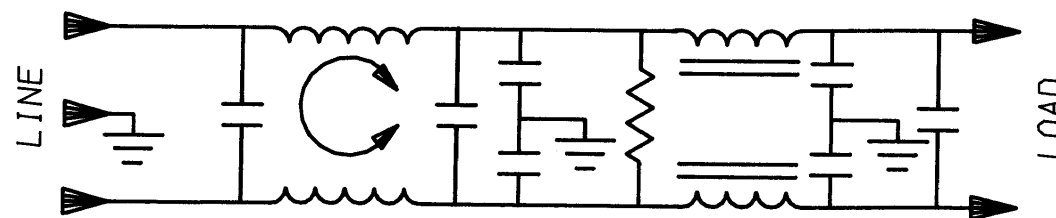
LINES TO GROUND:	2250 VDC FOR 1 MINUTE
LINE TO LINE:	1450 VDC FOR 1 MINUTE


FILTER APPROVAL:

THE BEST WAY TO SELECT AND QUALIFY A FILTER IS FOR YOUR ENGINEERING TO TEST THE UNIT IN YOUR EQUIPMENT.

⚠ OBSOLETE PARTS: OBSOLETE CIS STREAMLINING PER D.RENAUD/D.SINISI

6609041-3
~~1609041-3~~ OBSOLETE ⚠



50Ω - 50Ω (MINIMUM) INSERTION LOSS										TOLERANCE EXCEPT AS NOTED			 corcom LIBERTYVILLE, IL 60048		
FREQUENCY MHz	.15	.5	1	2	5	10	20	30				DECIMAL: .XXX .XX .X			ANGLES ± 1°
COMMON dB	18	30	35	50	65	65	63	53				METRIC: ± —			
DIFF. dB	25	65	65	65	65	55	50	50				MATERIAL:			
This document is proprietary to CORCOM INC. and is not to be reproduced nor used for manufacturing purposes except on CORCOM's order or prior written consent.												FINISH:		AS SUPPLIED	
												SCALE	DATE	DRG. NO.	REV.
												NTS	7-31-90	10W1	.05
												DRW. BY	ORIGINATOR		
												CFW	CFW		