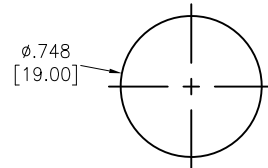
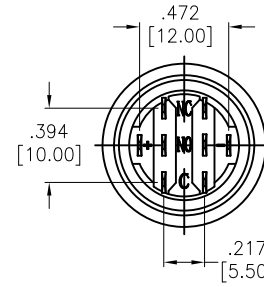
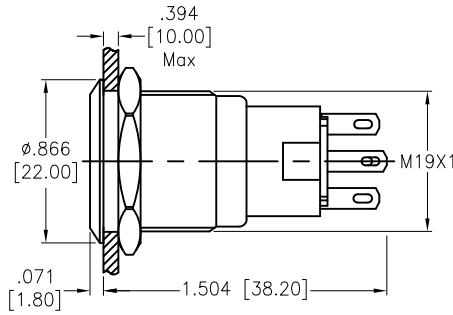
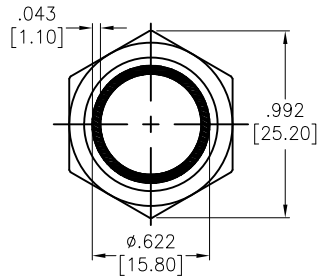


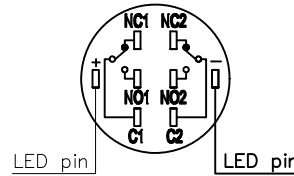
APPROVED: _____
 DATE: _____ TITLE: _____

Rev	AWO #	Description	Date	Appr
-		RELEASED	11/2/21	
A		UPDATE SPEC.	11/12/21	WX/RC

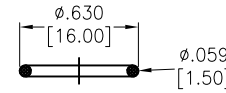
The shaded part is light design



MAX.PANEL THICKNESS
 RECOMMENDED PANEL CUT



LED pin
 Contact Composition
 LED pin



Seal Ring

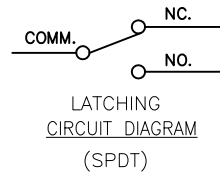
SPECIFICATIONS:

Material:
 Body: PBT, Rated UL94V-0
 Bushing: Stainless Steel, Varnish polished
 Button: Stainless Steel, Varnish polished
 Contact Material: Silver Alloy, (2.8x0.5mm)
 Nut: Brass, Nickel plated
 Electrical:

Voltage rating: 250V
 Current rating: 5A max
 Contact resistance: 50 mΩ max.
 Insulation resistance: 1000M ohms min @ 500V DC.
 Dielectric withstanding voltage: 1500V RMS, 50Hz.
 Electrical Life: 50,000 cycles min at full load.

Mechanical:
 Torque: 0.6Nm max.
 Temperature Rating:
 Operating temperature: -25°C to +55°C
 Environmental:

Sealed IP67 Rated
 Lead free, RoHS compliant



SW-PB7-03LB22CFRXXXXX

"x"	LED Color	LED Voltage	
		6V	6V AC/DC
R	Red	12V	12V AC/DC
G	Green	24V	24V AC/DC
Y	Yellow	110V	110V AC/DC
O	Orange	220V	220V AC/DC
B	Blue		
W	White		

UNLESS OTHERWISE SPECIFIED ALL DIMENSIONS ARE INCHES [MM]. TOLERANCES: EXCEPT AS NOTED

INCHES		HOLES	
.X	± .10	ØX	± .10
.XX	± .020	ØXX	± .015
.XXX	± .015	ØXXX	± .010

ADAM TECH
 909 Rahway Avenue,
 Union, NJ 07083
 Phone: 908-687-5000
 Fax: 908-687-5710

DRAWN	WX	11/2/21
CHECKED	RC	11/2/21
APPROVED		

TITLE SWITCH, ANTI-VANDAL, PUSH BUTTON,
 19mm, LIGHTED RING, SPDT,LATCHING, N.O.-N.C.

THIS DRAWING CONTAINS INFORMATION THAT IS PROPRIETARY AND SHOULD NOT BE USED WITHOUT PRIOR WRITTEN PERMISSION FROM ADAM TECH

SIZE	PART NO.	REV.
X	SW-PB7-03LB22CFRXXXXX	A

REF: S00198T SCALE: NTS SHEET 1 OF 1