

DO NOT SCALE FROM THIS PRINT

NOTES:

1. Ⓢ REPRESENTS A CRITICAL DIMENSION.
2. MINIMUM PUSHOUT FORCE: 16 OZ FOR TERMINALS, 12 OZ FOR WELD TABS, AND 8 OZ FOR LOCKING CLIPS.
3. MEASURED FROM BEND.
4. MAXIMUM TERMINAL BURR: .003 [.08].
5. MAXIMUM HEIGHT VARIATION BETWEEN ANY TWO PINS: .005 [.13].
6. DUE TO THE HIGH AMOUNT OF INSERTION FORCE NEEDED, THE -LC OPTION IS NOT COMPATIBLE WITH AUTO PLACEMENT. SAMTEC RECOMMENDS MANUAL PLACEMENT FOR ALL ASSEMBLIES WITH THE -LC OPTION.
7. TUBES ARE STANDARD PACKAGING.
8. ORDERS WILL BE PACKAGED ACCORDING TO THE SAMTEC PACKAGING EFFICIENCY STANDARDS (SPES) FOUND ON WWW.SAMTEC.COM.
9. ATTACH LABEL TO EACH REEL.

TFM-1XX-XX-X-S-XX-X-XX

No OF POSITIONS
ALL POSITIONS AVAILABLE
-02 THRU -50

LEAD STYLE
-01: T-1R16-01-X-2 THROUGH HOLE
-02: T-1R16-01-X-2 SURFACE MOUNT
-03: T-1R16-10-X THROUGH HOLE

PACKAGING
BLANK: TUBES (SEE NOTE 7)
-TR: TAPE & REEL (SEE NOTES 8 & 9) (SEE SHT 3, TAPE & REEL VIEW)
-FR: FULL REEL QTY TAPE & REEL (SEE NOTES 8 & 9) (SEE SHT 3, TAPE & REEL VIEW)

PICK & PLACE OPTION
-P: PICK AND PLACE PAD (USE PPP-15) (SEE FIG 6, SHT 2)
(ONLY AVAILABLE ON -08 THRU -50 POSITIONS, -07 THRU -50 POSITIONS WITH -WT OPTION)
-K: POLYIMIDE FILM (SEE FIG 3, SHT 2) (USE K-DOT-.217-.313-.005)

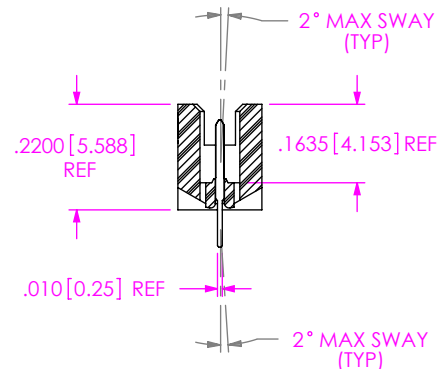
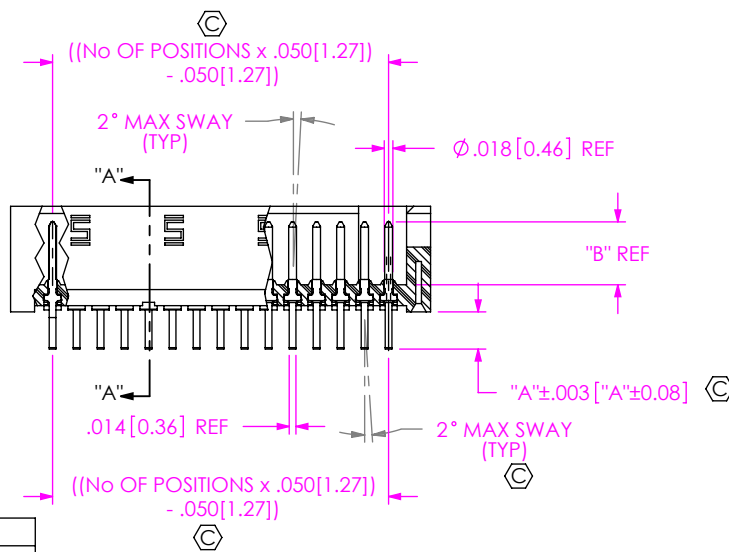
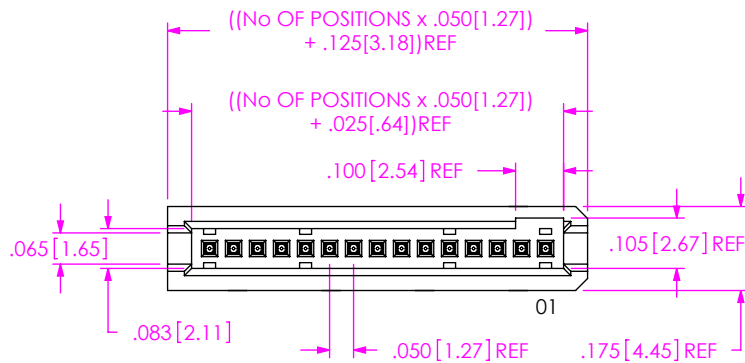
OPTION
-A: ALIGNMENT PIN (USE TFM-XX-S-01-A) (NOT AVAILABLE WITH -WT OPTION) (SEE FIG 5, SHEET 2)
-LC: LOCKING CLIP (USE LC-05-TM) (NOT AVAILABLE WITH -WT OPTION) (SEE FIG 7, SHEET 3) (SEE NOTE 6)
-WT: WELD TABS (USE WT-25-07-T) (SEE FIG 4, SHEET 2) (AVAILABLE ON -02 THRU -30 POS ONLY) (NOT AVAILABLE WITH -A OR -LC OPTIONS)
** -SN: SOLDER NAIL (USE WT-27-03) (NOT AVAILABLE WITH -A, -LC, OR -WT OPTIONS) (SEE FIG 8, SHEET 3)

** NOT TOOLED

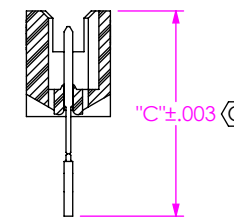
PLATING SPECIFICATIONS

- S: 30μ" SELECTIVE GOLD IN CONTACT AREA, MATTE TIN ON TAIL
- F: 3μ" FLASH GOLD IN CONTACT AREA, MATTE TIN ON TAIL
- L: 15μ" LIGHT GOLD IN CONTACT AREA, MATTE TIN ON TAIL
- H: 30μ" HEAVY GOLD IN CONTACT AREA, 3μ" GOLD ON TAIL

BODY SPECIFICATION
-S: SINGLE ROW (USE TFM-XX-S-XX-XX)



SECTION "A"-"A"



IN-PROCESS

FIG 1 (TFM-115-01-X-S-XX SHOWN)

POSITION	COPLANARITY
-02 THRU -29	.004 [.10]
-030 THRU -39	.006 [.15]
-40 THRU -50	.008 [.20]

LEAD STYLE	BODY	"A"	"B"	"C"	"E"
-01	TFM-XX-S-01-XX	.078 [1.98]	.131 [3.33]	.428 [10.87]	.303 [7.70]
-02	TFM-XX-S-01-XX	N/A	.131 [3.33]	.428 [10.87]	.231 [5.87]
-03	TFM-XX-S-01-XX	.111 [3.33]	.139 [3.53]	.645 [16.83]	.356 [9.04]

UNLESS OTHERWISE SPECIFIED, DIMENSIONS ARE IN INCHES.
TOLERANCES ARE:
DECIMALS ANGLES
.XX: ±.01 [.3] 2°
.XXX: ±.005 [.13]
.XXXX: ±.0020 [.051]

PROPRIETARY NOTE
THIS DOCUMENT CONTAINS CONFIDENTIAL AND PROPRIETARY INFORMATION AND ALL DESIGN, MANUFACTURING, REPRODUCTION, USE, PATENT RIGHTS AND SALES RIGHTS ARE EXPRESSLY RESERVED BY SAMTEC, INC. THIS DOCUMENT SHALL NOT BE DISCLOSED, IN WHOLE OR PART, TO ANY UNAUTHORIZED PERSON OR ENTITY NOR REPRODUCED, TRANSFERRED OR INCORPORATED IN ANY OTHER PROJECT IN ANY MANNER WITHOUT THE EXPRESS WRITTEN CONSENT OF SAMTEC, INC.

MATERIAL: DO NOT SCALE DRAWING SHEET SCALE: 1:0.4
INSULATOR: LCP, UL 94 V0, COLOR: BLACK
TERMINAL: PHOSPHOR BRONZE

DESCRIPTION:
.050 C.L. SINGLE ROW SHROUDED TERMINAL STRIP
DWG. NO.

TFM-1XX-XX-X-S-XX-X-XX

BY: D. SCHMELZ 8/21/2008 SHEET 1 OF 3



520 PARK EAST BLVD, NEW ALBANY, IN 47150
PHONE: 812-944-6733 FAX: 812-948-5047
e-Mail info@SAMTEC.com code 55322

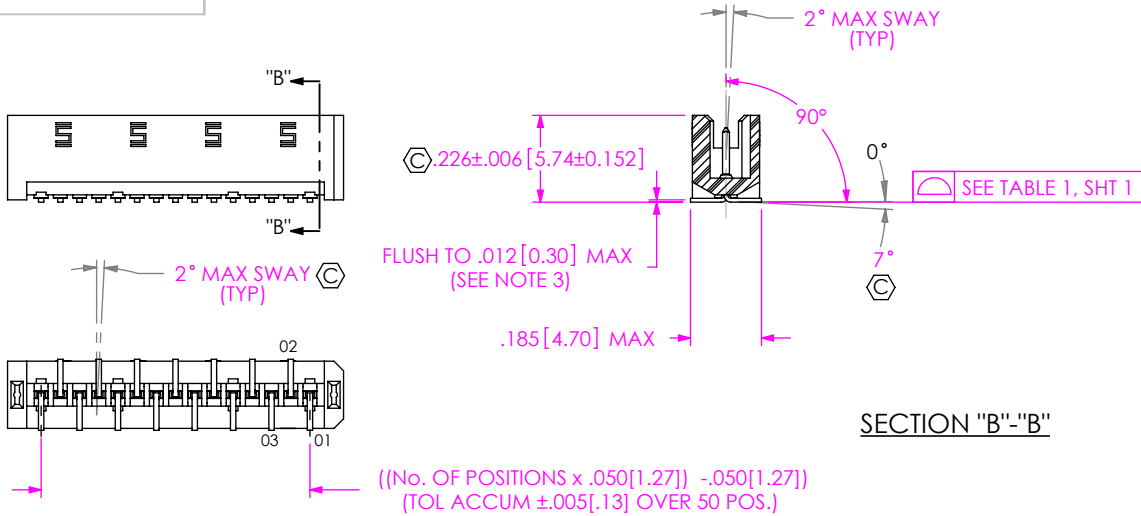


FIG 2
SURFACE MOUNT
(TFM-115-02-X-S-XX SHOWN)
(DIFFERENT AS SHOWN, OTHERWISE SAME AS FIG 1)

NOTE: "R" = OVERALL LENGTH REF
"S" = ((("R" - .216[5.49]) / 2) ±.020[.51])

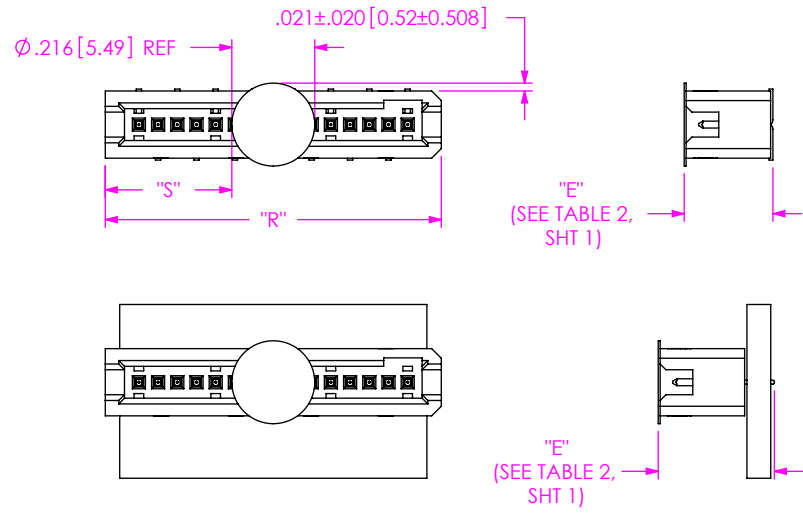


FIG 3
-K: POLYIMIDE FILM PAD
(TFM-115-02-X-S-K SHOWN)

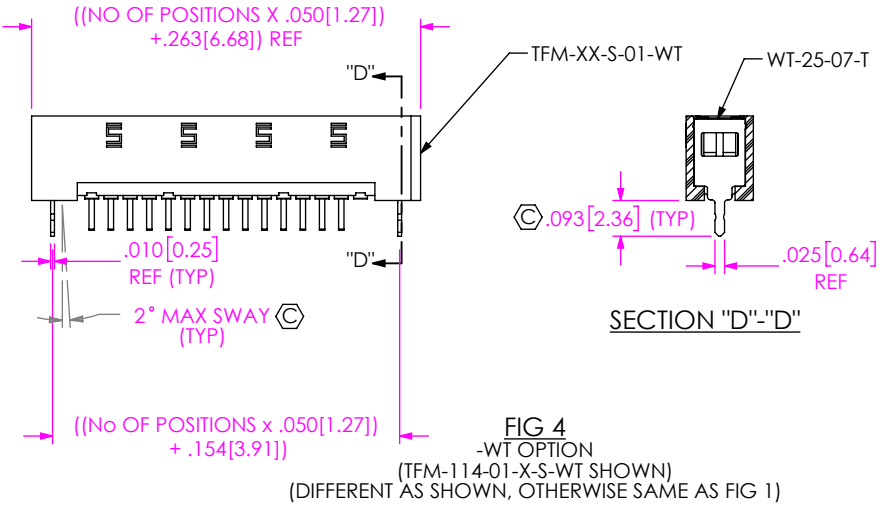


FIG 4
-WT OPTION
(TFM-114-01-X-S-WT SHOWN)
(DIFFERENT AS SHOWN, OTHERWISE SAME AS FIG 1)

NOTE: "M" = (No. OF POSITIONS X .050[1.27]) + .125[3.18] REF
WITH -WT "M" = (No. OF POSITIONS X .050[1.27]) + .263[6.68] REF
"P" = ((("M" - .375[9.53]) / 2) ±.020[.51])

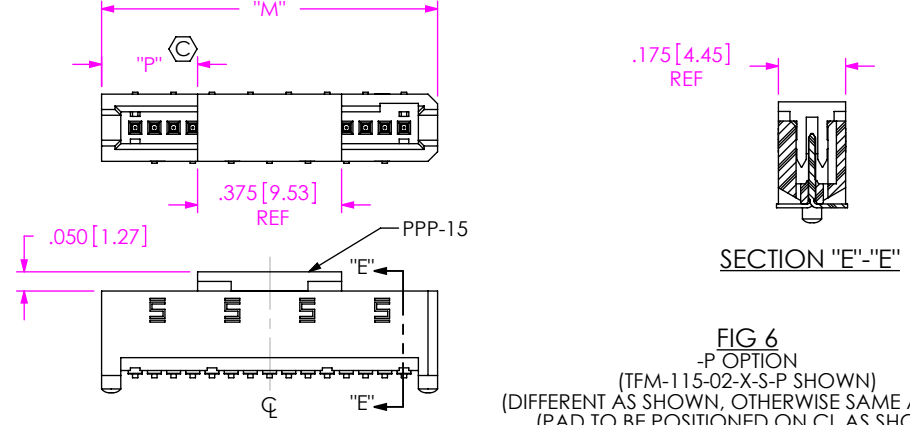


FIG 6
-P OPTION
(TFM-115-02-X-S-P SHOWN)
(DIFFERENT AS SHOWN, OTHERWISE SAME AS FIG 1)
(PAD TO BE POSITIONED ON CL AS SHOWN)

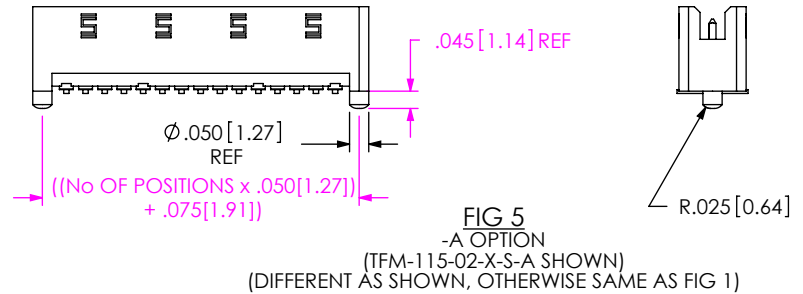


FIG 5
-A OPTION
(TFM-115-02-X-S-A SHOWN)
(DIFFERENT AS SHOWN, OTHERWISE SAME AS FIG 1)

F:\DWG\MISC\MKTG\TFM-1XX-XX-X-XX-MKT.SLDDRW

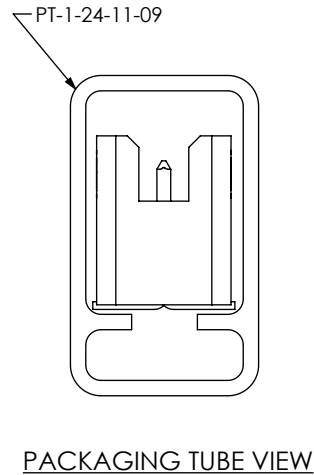
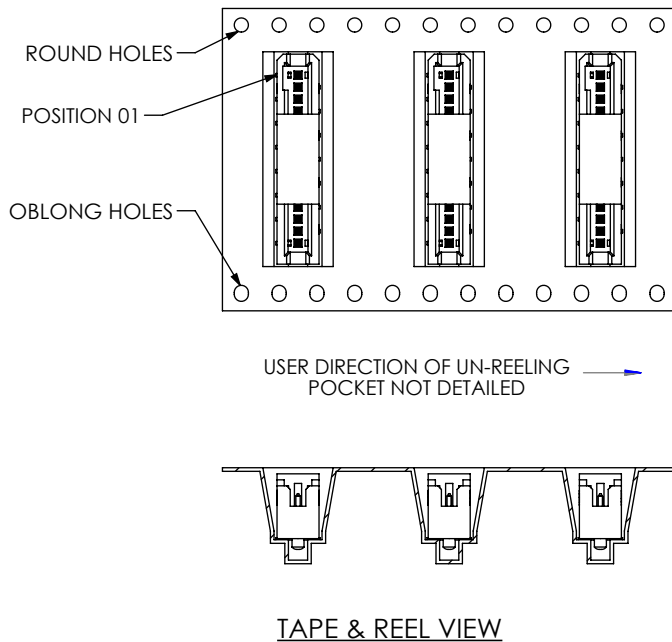
PROPRIETARY NOTE
THIS DOCUMENT CONTAINS CONFIDENTIAL AND PROPRIETARY INFORMATION AND ALL DESIGN, MANUFACTURING, REPRODUCTION, USE, PATENT RIGHTS AND SALES RIGHTS ARE EXPRESSLY RESERVED BY SAMTEC, INC. THIS DOCUMENT SHALL NOT BE DISCLOSED, IN WHOLE OR PART, TO ANY UNAUTHORIZED PERSON OR ENTITY NOR REPRODUCED, TRANSFERRED OR INCORPORATED IN ANY OTHER PROJECT IN ANY MANNER WITHOUT THE EXPRESS WRITTEN CONSENT OF SAMTEC, INC.

DO NOT SCALE DRAWING
SHEET SCALE: 2:1



520 PARK EAST BLVD. NEW ALBANY, IN 47150
PHONE: 812-944-6733 FAX: 812-948-5047
e-Mail info@SAMTEC.com code 55322

DESCRIPTION:
.050 C.L. SINGLE ROW SHROUDED TERMINAL STRIP
DWG. NO.
TFM-1XX-XX-X-S-XX-X-XX
BY: D. SCHMELZ 8/21/2008 SHEET 2 OF 3



- NOTES:
1. USE PT-1-24-11-09 TUBE AND (2) TP-09.
 2. USE PT-1-24-03-09 TUBE AND (2) TP-09 FOR -P AND -K OPTIONS.
 3. LOAD TUBE WITH 1ST POSITION IN SAME DIRECTION AS ARROW

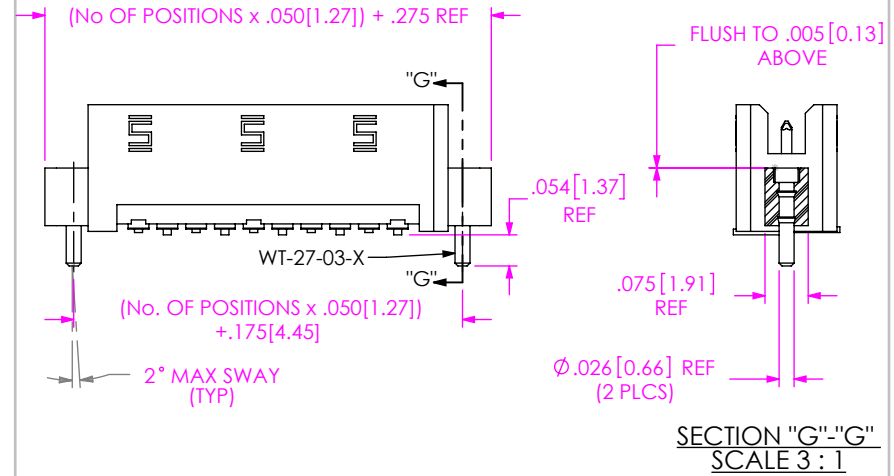


FIG 8
-SN OPTION
(TFM-110-02-X-S-SN SHOWN)
(DIFFERENT AS SHOWN, OTHERWISE SAME AS FIG 1)

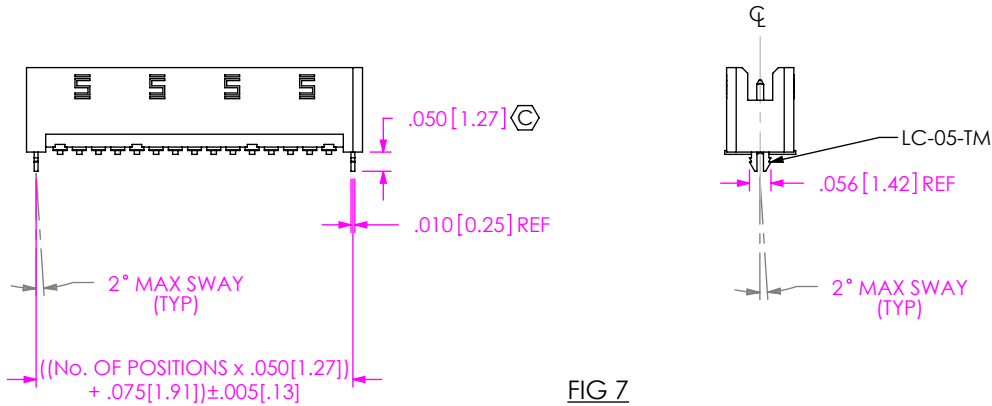


FIG 7
-LC OPTION
(TFM-115-02-X-S-LC SHOWN)
(DIFFERENT AS SHOWN, OTHERWISE SAME AS FIG 2)

*
*
*

* INSPECT ONLY WHEN APPLICABLE WITH RESPECT TO ASSEMBLY OPTION

PROPRIETARY NOTE
THIS DOCUMENT CONTAINS CONFIDENTIAL AND PROPRIETARY INFORMATION AND ALL DESIGN, MANUFACTURING, REPRODUCTION, USE, PATENT RIGHTS AND SALES RIGHTS ARE EXPRESSLY RESERVED BY SAMTEC, INC. THIS DOCUMENT SHALL NOT BE DISCLOSED, IN WHOLE OR PART, TO ANY UNAUTHORIZED PERSON OR ENTITY NOR REPRODUCED, TRANSFERRED OR INCORPORATED IN ANY OTHER PROJECT IN ANY MANNER WITHOUT THE EXPRESS WRITTEN CONSENT OF SAMTEC, INC.



520 PARK EAST BLVD, NEW ALBANY, IN 47150
PHONE: 812-944-6733 FAX: 812-948-5047
e-Mail info@SAMTEC.com code 55322

DO NOT SCALE DRAWING

SHEET SCALE: 2:1

DESCRIPTION:
.050 C.L. SINGLE ROW SHROUDED TERMINAL STRIP

DWG. NO.
TFM-1XX-XX-X-S-XX-X-XX

BY: D. SCHMELZ 8/21/2008 SHEET 3 OF 3