

THIS DRAWING IS UNPUBLISHED.

RELEASED FOR PUBLICATION

ALL RIGHTS RESERVED.

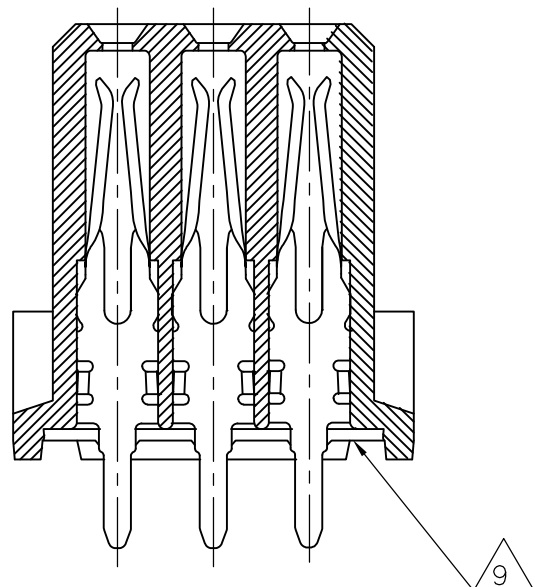
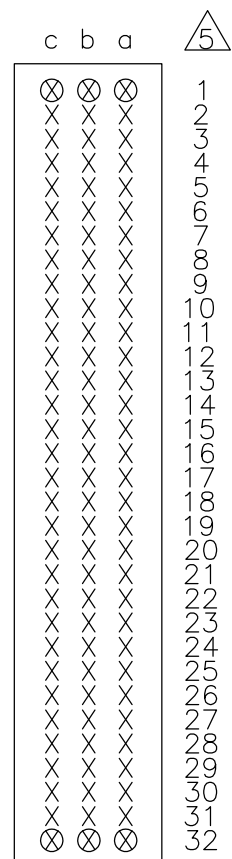
© COPYRIGHT - By -

LOC

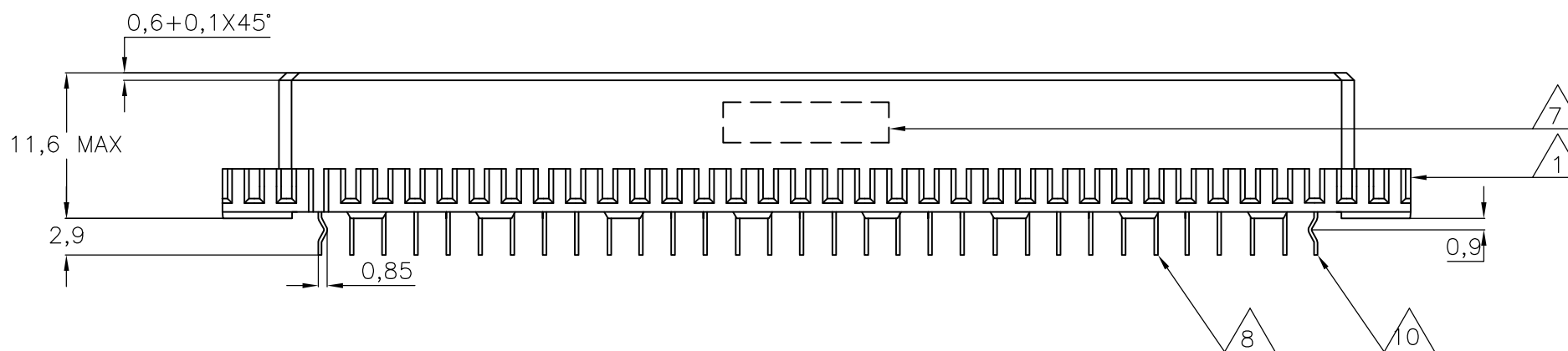
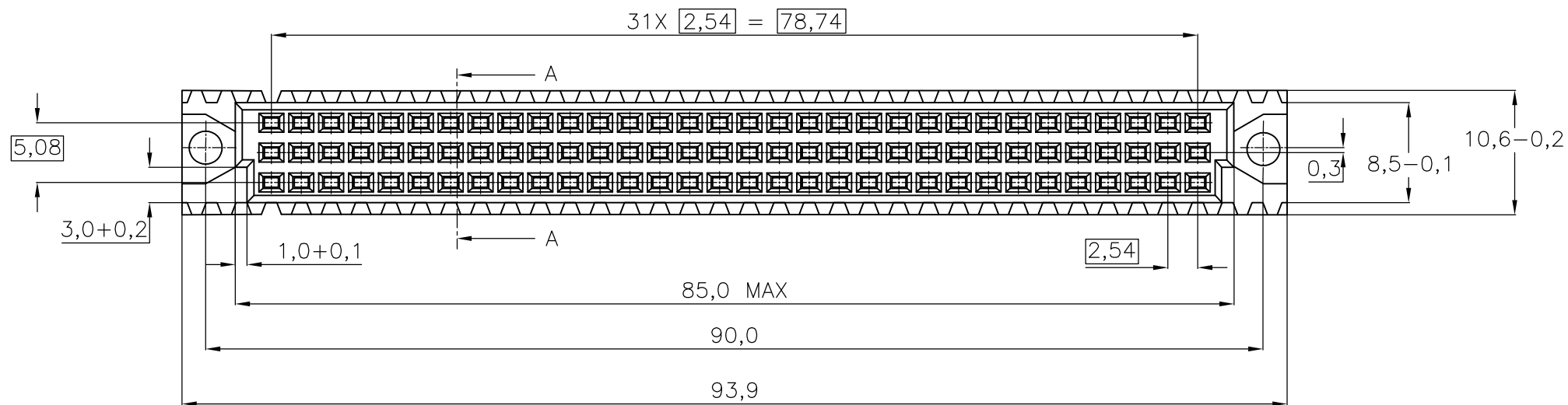
DIST

REVISIONS

P	LTR	DESCRIPTION	DATE	DWN	APVD
	L1	EH-1209-00	23-11-00	RvH	-
	M	ECR-07-011431	05-06-07	BSV	MKO
	M1	ECR-11-008320	18NOV11	RK	MKO



SECTION A-A



NOTES:

- 1 CONNECTOR MEETS THE REQUIREMENTS ACC. DIN 41613,PART 5.
- 2 MATERIAL CONTACT: PHOSPHORBRONZE. MATERIAL HOUSING: GLASSFILLED THERM. POLYESTER. COLOR:GREY
- 3 AT CONTACTAREA 1,25 μm GOLD OVER 1,25 μm NICKEL AT SOLDER POST AREA 1,25 μm TIN.
- 4 AT CONTACTAREA 0,8 μm GOLD OVER 1,25 μm NICKEL AT SOLDER POST AREA 1,25 μm TIN.
- 5 CONTACT ARRANGEMENTS; AN AN ASTERISK " X " DENOTES A SIGNAL CONTACT. AN ASTERISK " ⊗ " DENOTES A KINKED SIGNAL CONTACT.
- 6 AT CONTACTAREA 0,4 μm GOLD OVER 1,25 μm NICKEL AT SOLDER POST AREA 1,25 μm TIN.
- 7 CONNECTOR PRINTED WITH PARTNUMBER AND DATECODE ON OUTSIDE OF MATING AREA AT SIDE OF ROW c.
- 8 SOLDER POSTS SUITABLE FOR 1,0 NOM. P.C.B. HOLES.
- 9 FLUX RESISTANCE STRIP.
- 10 KINKED POSTS.
- 11 AT CONTACTAREA 0,1μm GOLD OVER 0,7μm PALLADIUM (DURAGOLD) OVER 1,25μm NICKEL, AT SOLDERPOST AREA 1,25μm TIN.

SUPERSEDED BY 2173044-4

WITH	WITHOUT	11	2	OBSOLETE	7-216081-4
WITH	WITH	11	2	OBSOLETE	6-216081-4
WITHOUT	WITHOUT	4	2	OBSOLETE	3-216081-4
WITH	WITHOUT	4	2	OBSOLETE	1-216081-4
WITH	WITH	6	2	OBSOLETE	216081-8
WITH	WITH	4	2		216081-4
WITH	WITH	3	2	OBSOLETE	216081-1
10	9	FINISH	MATERIAL	PARTNUMBER	

THIS DRAWING IS A CONTROLLED DOCUMENT.		DWN J.v.LIEMPT. 19JUN91	TE Connectivity 96 POS C FEMALE B.T.B.CONN. ACC. DIN 41612 WITH SOLDER POSTS FOR 1,6mm. P.C.BOARD THK'S.					
DIMENSIONS: mm		CHK J.v.GRUNSVEN. 19JUN91				NAME	SIZE	CAGE CODE
TOLERANCES UNLESS OTHERWISE SPECIFIED:		APVD L.v.SOEST. 19JUN91				PRODUCT SPEC	DRAWING NO	RESTRICTED TO
MATERIAL		FINISH				APPLICATION SPEC	WEIGHT	
0 PLC ± - 1 PLC ± - 2 PLC ± - 3 PLC ± - 4 PLC ± - ANGLES ± -		CUSTOMER DRAWING			SCALE NTS SHEET 1 OF 1 REV M1			