

## Crimp contact - SF-10KS320 - 1607031

Please be informed that the data shown in this PDF Document is generated from our Online Catalog. Please find the complete data in the user's documentation. Our General Terms of Use for Downloads are valid (<http://download.phoenixcontact.com>)



Crimp contact, Rolled, Taped articles, Contact diameter: 1 mm, Crimp range: 0.06 mm<sup>2</sup>...0.25 mm<sup>2</sup>



### Key commercial data

Packing unit	1 1
Weight per Piece (excluding packing)	0.2 GRM
Custom tariff number	85389099
Country of origin	Germany

### Technical data

#### General

Contact type	Rolled
Contact diameter	1 mm
Contact type	Socket
Connection type	Crimp connection
Insertion/withdrawal cycles mechanical	500
Litz wire cross section min.	0.06 mm <sup>2</sup>
Litz wire cross section max.	0.25 mm <sup>2</sup>

### Classifications

#### eCl@ss

eCl@ss 4.0	272607xx
eCl@ss 4.1	27260701
eCl@ss 5.0	27260701
eCl@ss 5.1	27260701
eCl@ss 6.0	27260708

# Crimp contact - SF-10KS320 - 1607031

## Classifications

### eCl@ss

eCl@ss 7.0	27440312
eCl@ss 8.0	27440312

### ETIM

ETIM 3.0	EC001121
ETIM 4.0	EC000796
ETIM 5.0	EC000796

### UNSPSC

UNSPSC 6.01	43172015
UNSPSC 7.0901	43201404
UNSPSC 11	43172015
UNSPSC 12.01	43201404
UNSPSC 13.2	43201404

## Approvals

### Approvals

---

Approvals

GOST

---

Ex Approvals

---

Approvals submitted

---

### Approval details

GOST 
--

## Accessories

- Accessories
- Crimping tool

## Crimp contact - SF-10KS320 - 1607031

### Accessories

Crimping pliers - SF-Z0029 - 1607458



Crimping pliers

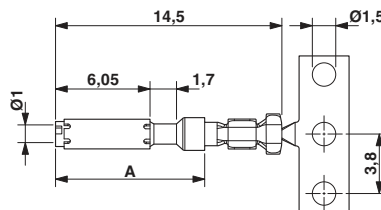
Electrical crimping tool - SF-Z0032 - 1607462



Electrical crimping tool

### Drawings

Dimensioned drawing



A = D-SUB dimensions