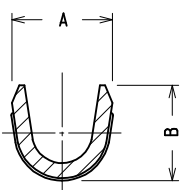
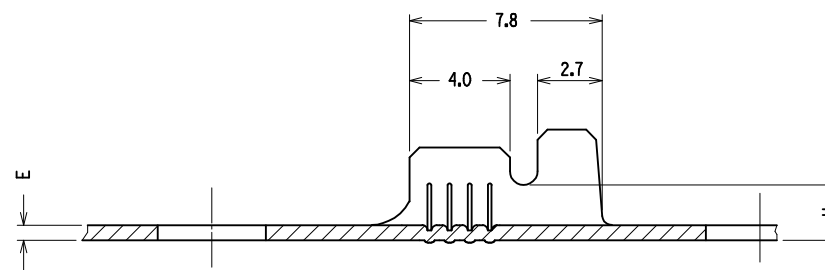
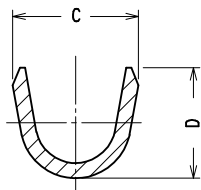


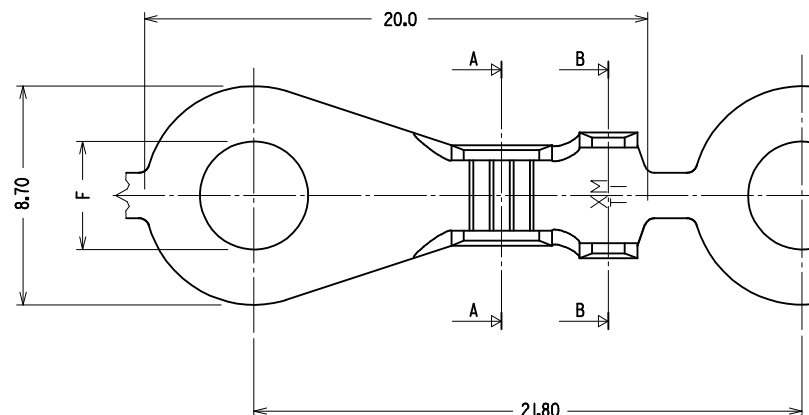
Sez. A - A



Sez. B - B



CODICE P/N	FINITURA PLATING	SEZ. RAME WIRE RANGE (mm ²)	Ø ISOLANTE INS. RANGE (mm)	DIMENSIONI / DIMENSIONS (mm)								SPQ (pcs)
				A	B	C	D	E	F	H		
94511 - 1310	greggio/ <i>pln</i>	0.5 - 2.0	2.2 - 4.0	4.0	3.7	5.0	4.4	0.6	3.10	1.7	18.000	
94511 - 1311	stagnato/ <i>fln</i>											
94511 - 1410	greggio/ <i>pln</i>	0.5 - 2.0	2.2 - 4.0	4.0	3.7	5.0	4.4	0.6	4.30	1.7	18.000	
94511 - 1411	stagnato/ <i>fln</i>											
94511 - 1420	greggio/ <i>pln</i>	0.5 - 1.5	2.2 - 3.2	4.0	3.9	5.0	4.6	0.8	4.30	1.7	18.000	
94511 - 1421	stagnato/ <i>fln</i>											
94511 - 1510	greggio/ <i>pln</i>	0.5 - 2.0	2.2 - 4.0	4.0	3.7	5.0	4.4	0.5	5.20	1.7	15.000	
94511 - 1511	stagnato/ <i>fln</i>											
94511 - 1520	greggio/ <i>pln</i>	0.5 - 2.0	2.2 - 4.0	4.0	3.7	5.0	4.4	0.6	5.20	1.7	18.000	
94511 - 1521	stagnato/ <i>fln</i>											
94511 - 1610	greggio/ <i>pln</i>	0.5 - 2.0	2.2 - 4.0	4.0	3.7	5.0	4.4	0.6	6.30	1.7	18.000	
94511 - 1611	stagnato/ <i>fln</i>											
94511 - 2310	greggio/ <i>pln</i>	1.5 - 3.5	3.2 - 4.2	4.2	4.7	6.0	6.0	0.6	3.10	2.4	15.000	
94511 - 2311	stagnato/ <i>fln</i>											
94511 - 2410	greggio/ <i>pln</i>	1.5 - 3.5	3.2 - 4.2	4.2	4.7	6.0	6.0	0.6	4.30	2.4	15.000	
94511 - 2411	stagnato/ <i>fln</i>											
94511 - 2520	greggio/ <i>pln</i>	1.5 - 3.5	3.2 - 4.2	4.2	4.7	6.0	6.0	0.6	5.20	2.4	15.000	
94511 - 2521	stagnato/ <i>fln</i>											
94511 - 2610	greggio/ <i>pln</i>	1.5 - 3.5	3.2 - 4.2	4.2	4.7	6.0	6.0	0.6	6.30	2.4	15.000	
94511 - 2611	stagnato/ <i>fln</i>											



MATERIALE: OTTONE
MATERIAL: BRASS

CONFEZIONE (SPQ) : 3 BOBINE poste in una SCATOLA di CARTONE.
PACKAGING (SPQ) : 3 REELS inside a CARTON BOX.

Added SPQ & PKG notes EC NO: Z2015-0038 DRWN:L.SANTISS 2014/09/15 CHKD:L.SANTISS 2014/09/16 APPR:P.ZANGIROLAMI 2014/09/16	QUALITY SYMBOLS $\nabla_A = 0$ $\nabla_B = 0$ $\nabla_P = 0$	GENERAL TOLERANCES (UNLESS SPECIFIED)		DIMENSION STYLE MM ONLY		SCALE 5:1	DESIGN UNITS METRIC	FIRST ANGLE PROJECTION		
		4 PLACES ± --- ± ---	3 PLACES ± --- ± ---	2 PLACES ± 0.10 ± ---	1 PLACE ± 0.20 ± ---	0 PLACE ± ±	ANGULAR ± --- °	DRAWN BY DATE FGOTTARDO 1989/06/30		
		DRAFT WHERE APPLICABLE MUST REMAIN WITHIN DIMENSIONS		(see chart)		CHECKED BY DATE MPREVIATO 1989/06/30		TITLE CAPOCORDA AD OCCHIELLO RING TONGUE TERMINAL		
		B2		MATERIAL NO.		APPROVED BY DATE PZANGIROLAMI 2014/09/16		DOCUMENT NO. SD-94511-001		SHEET NO. 1 OF 1