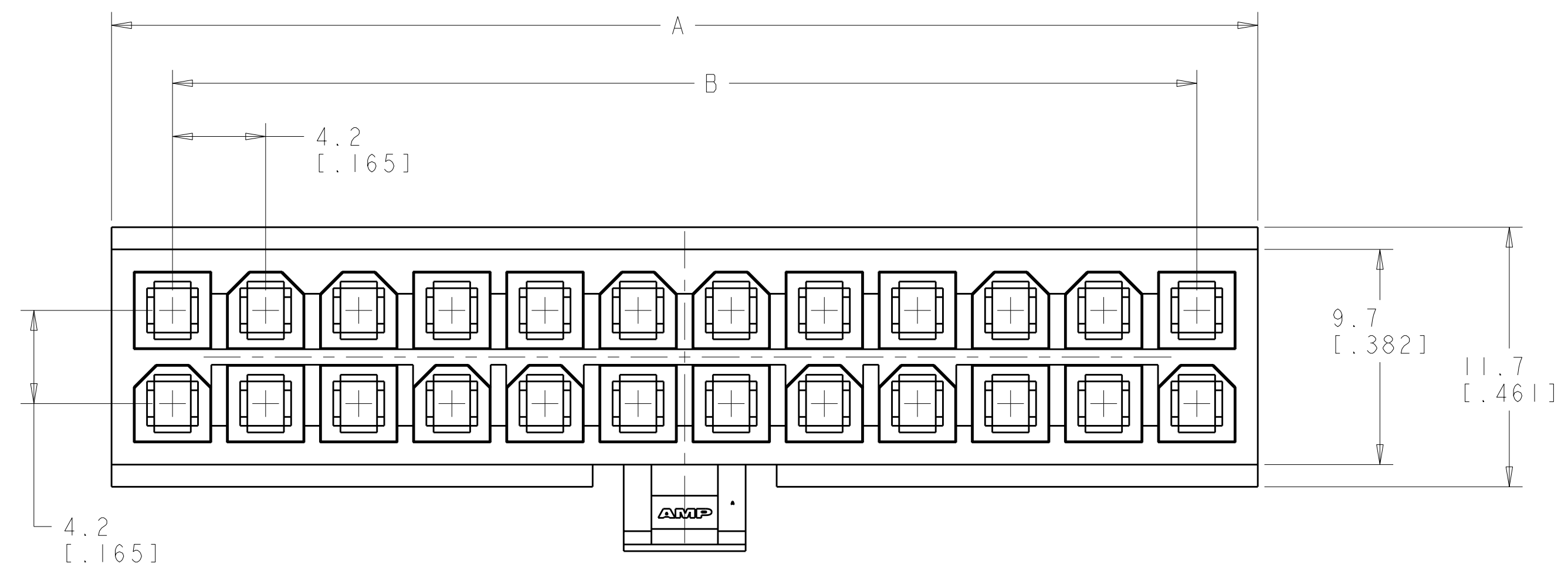
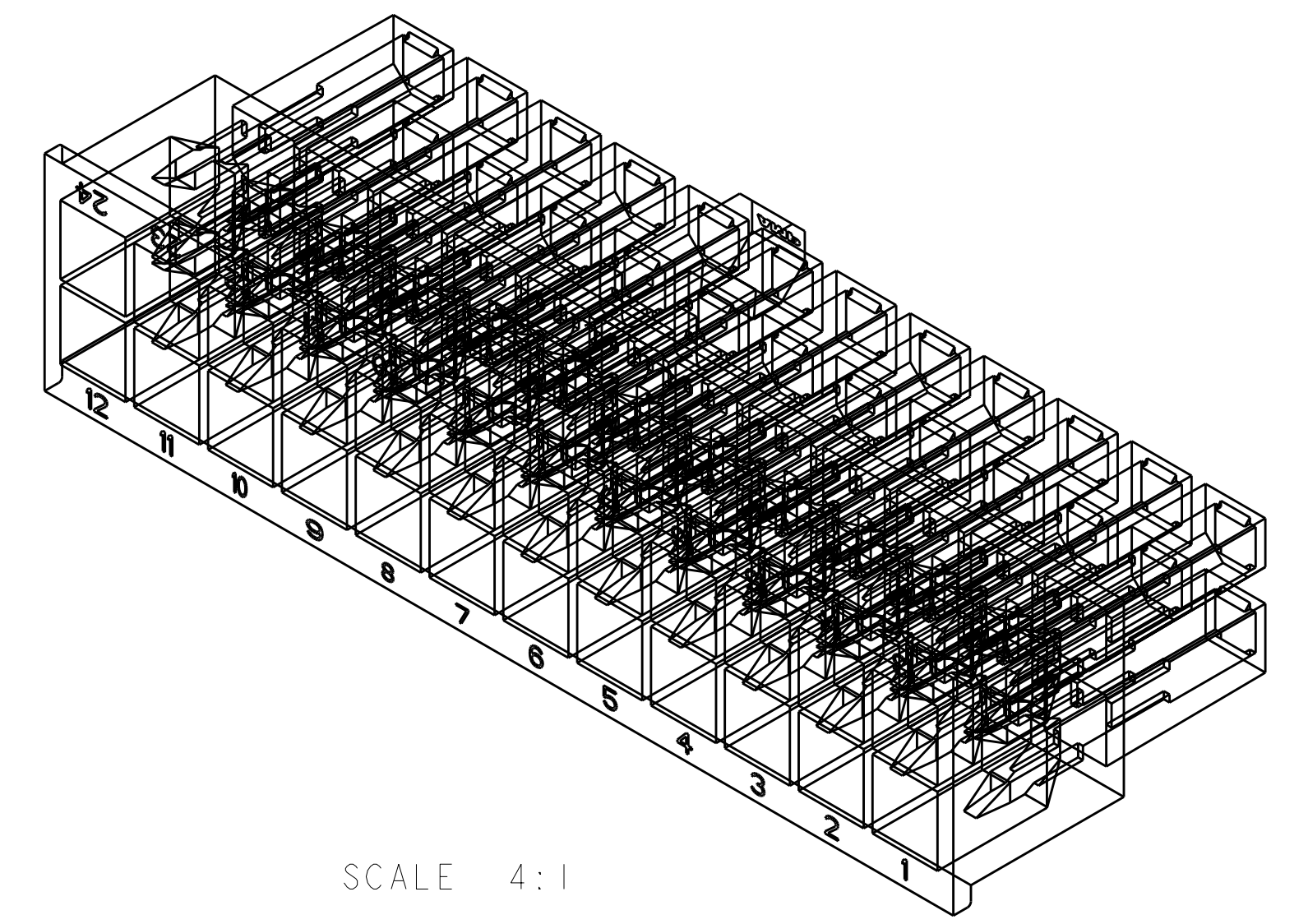
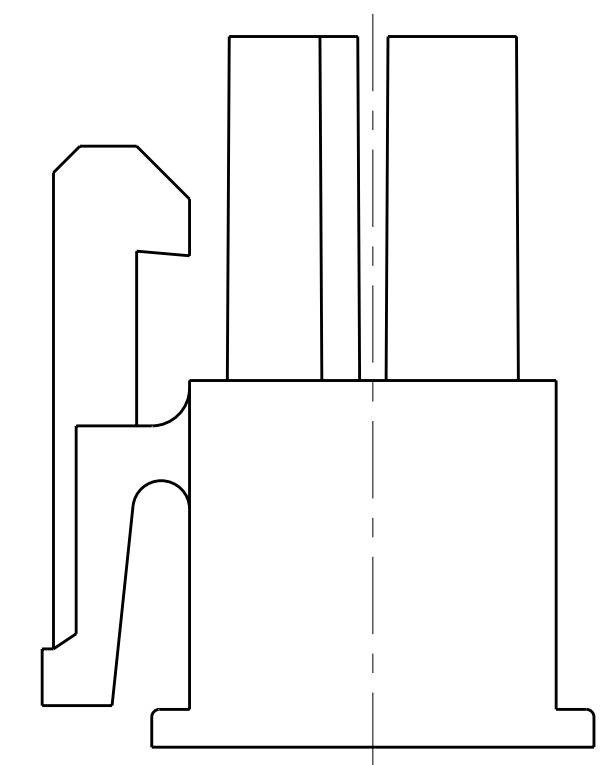
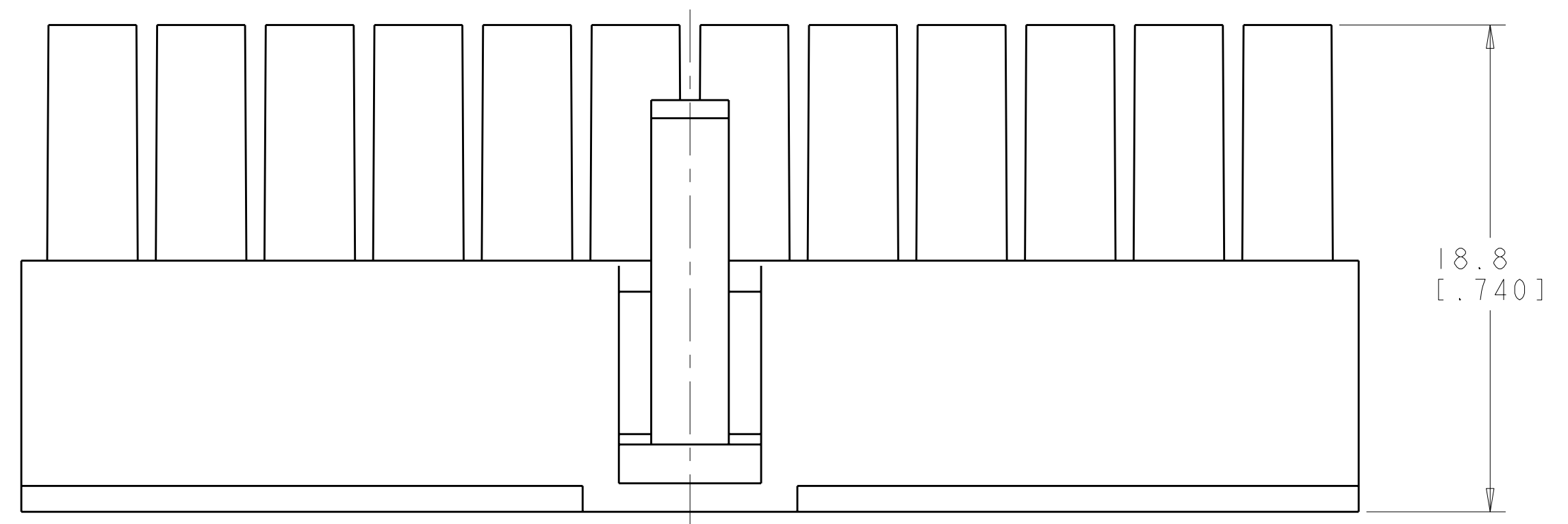


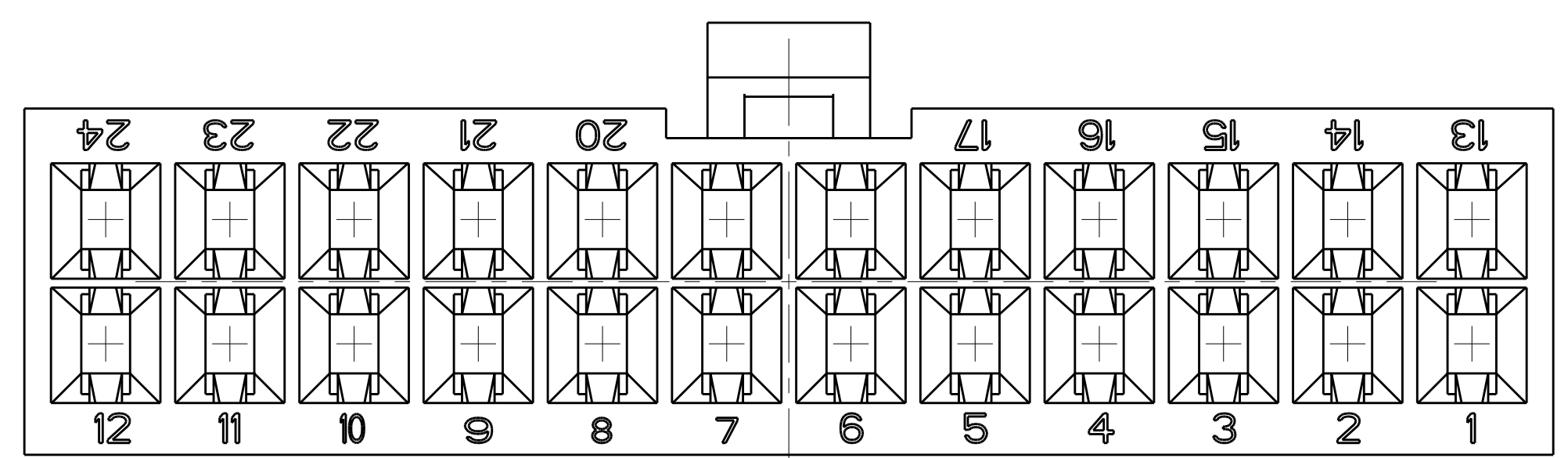
LOC	DIST	REVISIONS			
CM	00	REV	DATE	BY	APPD
		C1	REVIS PER ECO-11-005027	15MAR2011	RK HMR



- △ NYLON, UL94V-0, NATURAL.
- 2. DIMENSIONS IN BRACKETS ARE IN INCHES.
- 3. FEMALE CONTACTS MUST BE INSERTED SO THAT THE TOP OF THE WIRE AND INSULATION CRIMPS ARE FACING THE CIRCUIT NUMBER OF THE POSITION INTO WHICH IT IS BEING INSERTED OR 180° FROM THE CIRCUIT NUMBER FOR THAT POSITION.



SCALE 4:1



4032.2	24	46.2[1.82]	51.7[2.04]	2-794657-4
3717.6	22	42[1.65]	47.5[1.87]	2-794657-2
3403	20	37.8[1.49]	43.3[1.71]	2-794657-0
3088.5	18	33.6[1.32]	39.1[1.54]	1-794657-8
2774	16	29.4[1.16]	34.9[1.37]	1-794657-6
2459.5	14	25.2[0.99]	30.7[1.21]	1-794657-4
2144.9	12	21[0.83]	26.5[1.04]	1-794657-2
1830.4	10	16.8[0.66]	22.3[0.88]	1-794657-0
1515.9	8	12.6[0.5]	18.1[0.71]	794657-8
1201.3	6	8.4[0.33]	13.9[0.55]	794657-6
886.8	4	4.2[0.17]	9.7[0.38]	794657-4
575.1	2	0[0]	5.5[0.22]	794657-2
VOLUME mm ³	NO OF POSITIONS	B	A±0.2[.01]	PART NUMBER

THIS DRAWING IS A CONTROLLED DOCUMENT.		DRN	27JUN2007	TE Connectivity	
DIMENSIONS: mm [INCHES]		CHK	27JUN2007	RECEPTACLE HOUSING, 2 TO 24 POSITION, AMP-DUAC(TM) POWER CONNECTOR	
TOLERANCES UNLESS OTHERWISE SPECIFIED:		APPD	27JUN2007	SIZE CAGE CODE DRAWING NO RESTRICTED TO	
9 PLC	±0.2[.01]	MATERIAL		A100779C=794657	
3 PLC	±0.2[.01]	FINISH		SCALE 4:1 SHEET 1 OF 1 REV C1	
5 PLC	±0.13[.005]	CUSTOMER DRAWING			
4 PLC	±				
ANGLES	±				
	±0°30'				

