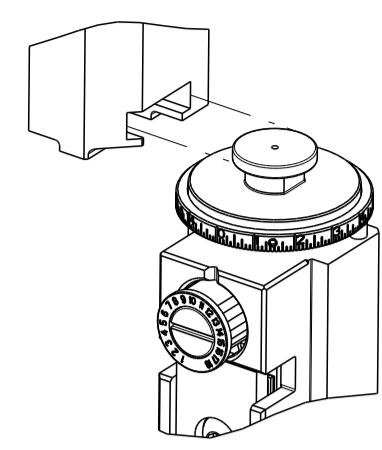


| PART NUMBER | REVISION | DESCRIPTION | FEED TYPE |
|-------------|----------|----------------------------------|------------|
| 2150450-1 | C | FINE CRIMP HEIGHT ADJUST | MECHANICAL |
| 2150450-2 | C | FINE CRIMP HEIGHT ADJUST | PNEUMATIC |
| 7-2150450-1 | C | MECHANICAL AND CRIMP TOOLING KIT | MECHANICAL |
| 7-2150450-2 | C | PNEUMATIC AND CRIMP TOOLING KIT | PNEUMATIC |
| 7-2150450-7 | B | CRIMP TOOLING KIT | - |

ATLANTIC VERSION TERMINATOR INTERFACE ADAPTER



| APPLICATOR DATA | | |
|--------------------------------|----------------|------|
| CRIMP | SIZE | TYPE |
| WIRE | 1.78 mm [.070] | F |
| INSUL | 3.56 mm [.140] | OV |
| APPL INSTRUCTIONS 408-35043 | | |

| TERMINAL DATA: TE TERMINAL | | TE CRIMP SPECIFICATION | |
|--|-------------|------------------------------|-------------|
| TERMINAL NAME: RECEPTACLE, FASTON FLAG, AMPLIVAR | | | |
| WIRE STRIP LENGTH | | INSULATION DIAMETER RANGE | |
| 4.39-5.15 mm [.173-.203 IN] | | ∅2.54-3.05 mm [.100-.120 IN] | |
| TERMINAL APPLICATION SPECIFICATION | 114-2152 | | |
| TERMINALS APPLIED | | | |
| TE TERMINAL | TE TERMINAL | TE TERMINAL | TE TERMINAL |
| 1742881-1 | | | |

| WIRE SIZE | CRIMP HEIGHT mm [INCH] | CRIMP HEIGHT REFERENCE SETTING |
|-----------|--------------------------------|--------------------------------|
| 1900 CMA | 1.45 +/- 0.000 [.057 +/- .000] | 7.0 |
| 500 CMA | 1.17 +/- 0.000 [.046 +/- .000] | 10.0 |

- RECOMMENDED SPARE PARTS
 - REFER TO SUPPLIED INSTRUCTION SHEET FOR CLEANING, LUBRICATION AND STORAGE OF APPLICATOR.
 - APPLY PART NUMBER 2-23419-6 LOCTITE TO THREADS OF ITEM 242.
 - CRIMP HEIGHT REFERENCE SETTING WAS THE SETTING USED WHEN THE APPLICATOR WAS QUALIFIED AT THE FACTORY. ADJUSTMENT MAY BE NECESSARY WHEN RUNNING APPLICATOR IN THE FIELD.
 - TERMINAL LUBRICANT IS RECOMMENDED.
6. UNLESS SPECIFIED OTHERWISE TORQUE VALUES SHALL BE USED PER DOCUMENT, 101-35000.

***WARNING**
ON INSTALLATION, SET WIRE DISC TO CRIMP HEIGHT REFERENCE SETTING FOR LARGEST WIRE SIZE. CRIMP HEIGHT REFERENCE SETTINGS GREATER THAN THE VALUE SHOWN MAY CAUSE DAMAGE TO THE CRIMP TOOLING. REFER TO THE INSTRUCTION SHEET FOR PROPER SETUP AND ADJUSTMENTS.

| LOC | DIST | REVISIONS | | | | | |
|-----|------|-----------|-----|---------------|-----------|-----|------|
| A | 66 | P | LTN | DESCRIPTION | DATE | OWN | APVD |
| | | A | | RELEASED | 30DEC2014 | KS | TE |
| | | B | | ECR-18-012732 | 10AUG2018 | FL | CT |
| | | C | | ECR-19-009185 | 11JUN2019 | TB | CT |

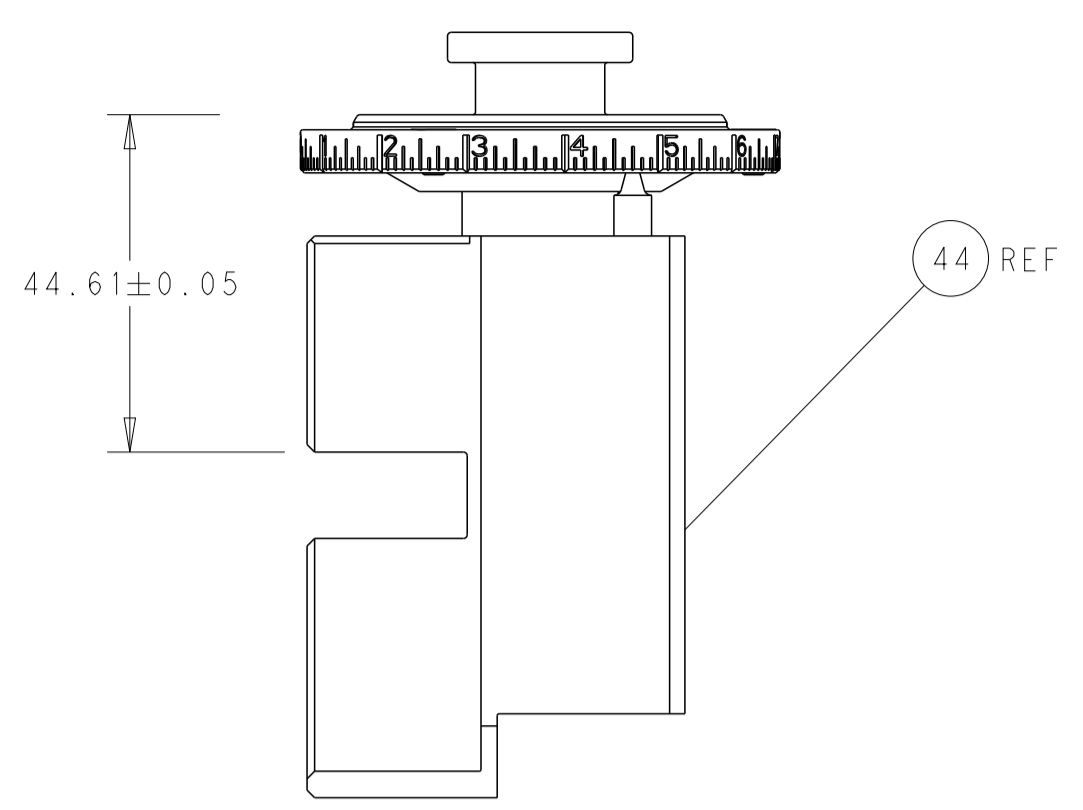
| | | | | | | | | |
|---|-----|-----|-----|-----|-------------|-------------------------------------|-------------|---------|
| - | 2 | 2 | 2 | 2 | 2168400-1 | SHCS, LOW HEAD, RoHS, M4 X 12 | 261 | |
| - | 1 | - | 1 | - | 2119640-1 | PUSH ROD, AIR FEED | 250 | |
| - | 1 | - | 1 | - | 1803259-1 | BUSHING, FLANGED | 249 | |
| - | 1 | - | 1 | - | 2119641-1 | FEED CAM, AIR FEED | 248 | |
| - | 1 | 1 | 1 | 1 | 2119082-4 | CAM, SNAIL, INSULATION ADJUSTMENT | 244 | |
| - | 1 | 1 | 1 | 1 | 2079764-1 | WASHER, WAVE SPRING, CREST-TO-CREST | 243 | |
| - | 1 | 1 | 1 | 1 | 2119083-1 | RETAINER, INSULATION DIAL | 242 | |
| - | - | 1 | - | 1 | 2119580-1 | MECHANICAL FEED ASSEMBLY | 239 | |
| - | 1 | - | 1 | - | 2063440-1 | AIR FEED MODULE | 238 | |
| - | 1 | 1 | 1 | 1 | 1-18028-0 | WASHER, FLAT, REG M8 | 192 | |
| - | 2 | 2 | 2 | 2 | 1-2168083-1 | SCR, SKT HD CAP, RoHS, M3 X 6 | 191 | |
| - | 2 | - | 2 | - | 21045-3 | RING, RETAIN, EXTERN, 3/16 CRESCENT | 172 | |
| - | REF | REF | REF | REF | 994970-2 | COUNTER, MAGNETIC | 164 | |
| - | 1 | - | 1 | - | 240638-1 | SPRING, FEED FINGER | 163 | |
| - | 1 | - | 1 | - | 3-23627-7 | PIN, RETAIN, GRVD, 3/16 X .854 | 137 | |
| - | 1 | 1 | 1 | 1 | 2119955-2 | ASSY, LUBRICATOR, END FEED | 84 | |
| - | 1 | 1 | 1 | 1 | 2-455888-3 | SPACER, CRIMPER | 82 | |
| - | 1 | 1 | 1 | 1 | 2119791-5 | DEPRESSOR, WIRE | 73 | |
| - | 1 | 1 | 1 | 1 | 1803607-2 | DOCUMENTATION PACKAGE | 71 | |
| - | 2 | 2 | 2 | 2 | 3-18032-3 | SCR, SET, FLT PNT, M3 X 20.0 | 70 | |
| - | 1 | 1 | 1 | 1 | 2119943-1 | WASHER, SPACER | 69 | |
| - | 1 | 1 | 1 | 1 | 2119740-1 | TAG, IDENTIFICATION | 67 | |
| - | 2 | 2 | 2 | 2 | 2168078-1 | SCREW, DRIVE, RH, RoHS, 2 x .188 | 66 | |
| - | 1 | 1 | 1 | 1 | 2168083-2 | SCR, SKT HD CAP, RoHS, M4 X 8.0 | 60 | |
| - | - | 1 | - | 1 | 5-18022-5 | SCR, HEX HD CAP, M4 X 6.0 | 59 | |
| - | - | 1 | - | 1 | 2063961-5 | FEED FINGER | 58 | |
| - | 2 | 2 | 2 | 2 | 2168400-4 | SHCS, LOW HEAD, RoHS, M4 X 8 | 57 | |
| - | 2 | 2 | 2 | 2 | 5018030-1 | NUT, HEX, REG, RoHS, M3 | 54 | |
| - | 2 | 2 | 2 | 2 | 986965-8 | NUT, LOCK, HEX, TORQUE (M4) | 53 | |
| - | 1 | - | 1 | - | 2119792-9 | PAWL, EF, AIR | 51 | |
| - | 1 | 2 | 1 | 2 | 18023-9 | SCR, SKT HD CAP M4 X 6.0 | 49 | |
| - | - | 1 | - | 1 | 2119652-1 | FEED CAM, PRE FEED | 48 | |
| - | - | 1 | - | 1 | 2119653-1 | FEED CAM, POST FEED | 47 | |
| - | 1 | 1 | 1 | 1 | 2119655-5 | APPLICATOR BASIC ASSEMBLY, EF | 46 | |
| - | 1 | 1 | 1 | 1 | 1803517-2 | RAM ASSEMBLY, EF ATLANTIC | 44 | |
| - | 1 | 1 | 1 | 1 | 1803602-2 | SCR, BHSC, RoHS (M8 X 40) | 41 | |
| - | 8 | 8 | 8 | 8 | 1-18028-2 | WASHER, FLAT, REG M4 | 33 | |
| - | 2 | 2 | 2 | 2 | 2168083-9 | SCR, SKT HD CAP, RoHS, M4 X 20 | 31 | |
| - | 2 | 2 | 2 | 2 | 2168083-2 | SCR, SKT HD CAP, RoHS, M4 X 8.0 | 29 | |
| - | 1 | 1 | 1 | 1 | 240639-3 | STRIPPER (MACHINING) | 27 | |
| - | 2 | 2 | 2 | 2 | 1-2168083-6 | SCR, SKT HD CAP, RoHS, M4 X 35 | 25 | |
| - | 1 | 1 | 1 | 1 | 2161922-5 | PLATE, STRIP GUIDE | 24 | |
| - | 2 | 2 | 2 | 2 | 22281-8 | SPRING, COMPRESSION | 22 | |
| - | 1 | 1 | 1 | 1 | 1-1633168-0 | ARM, STOCK DRAG | 21 | |
| - | 1 | 1 | 1 | 1 | 464452-2 | DRAG, STOCK | 20 | |
| - | 1 | 1 | 1 | 1 | 1-1901259-2 | GUIDE, LOWER STRIP | 19 | |
| - | 1 | 1 | 1 | 1 | 3-1901695-2 | STRIP GUIDE, FRONT | 18 | |
| - | 4 | 4 | 4 | 4 | 1-2079383-1 | SCR, BHSC, RoHS (M6 X 12) | 17 | |
| - | 1 | 1 | 1 | 1 | 461160-3 | PLATE, REAR SHEAR | 11 | |
| - | 4 | 4 | 4 | 4 | 7-240645-4 | SPACER, SHEAR PLATE | 10 | |
| - | 1 | 1 | 1 | 1 | 455961-5 | PLATE, FRONT SHEAR | 9 | |
| - | 1 | 2 | 2 | 1 | 1803645-1 | ANVIL, COMBINATION | 8 | |
| - | 1 | 1 | 1 | 1 | 2-459722-8 | BLADE, SHEAR | 7 | |
| - | - | - | - | - | - | - | 6 | |
| - | 1 | 1 | 1 | 1 | 1-238011-0 | BLOCK, CRIMPER SPACER | 4 | |
| - | 1 | 2 | 2 | 1 | 2119785-6 | CRIMPER, INSULATION OVERLAP PREMIUM | 3 | |
| - | 1 | 1 | 1 | 1 | 1-455888-8 | SPACER, CRIMPER | 2 | |
| - | 1 | 2 | 2 | 1 | 7-456404-3 | CRIMPER, WIRE PREMIUM | 1 | |
| - | 77 | 72 | 71 | 2 | -1 | PART NO | DESCRIPTION | ITEM NO |

ATLANTIC VERSION
Shown on sheets 1 of 4 & 2 of 4
(Pacific version shown on sheets 3 of 4 & 4 of 4)

| DIMENSIONS: | | TOLERANCES UNLESS OTHERWISE SPECIFIED: | | MATERIAL: | | FINISH: | |
|-------------|---------|--|---------|-----------|---------|---------|--------|
| mm | 0 PLC ± | 1 PLC ± | 2 PLC ± | 3 PLC ± | 4 PLC ± | ANGLES | FINISH |
| MATERIAL | | FINISH | | WEIGHT | | SCALE | |
| - | | - | | - | | 1:1 | |

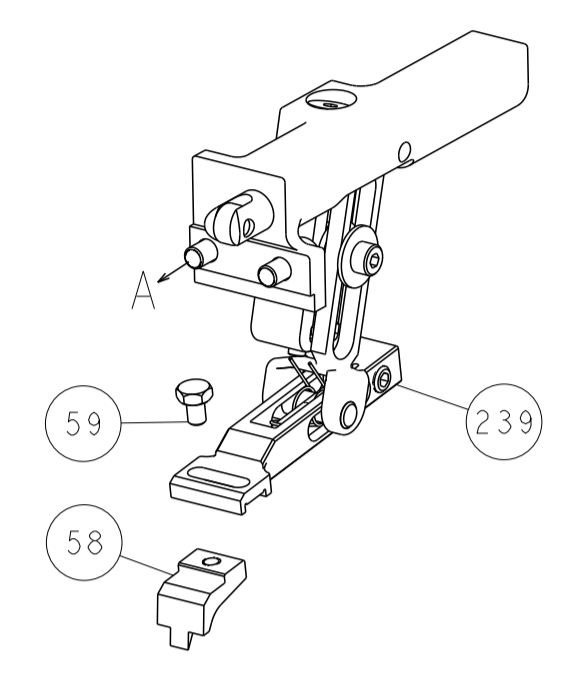
| | | | |
|--|-----------|------------|--|
| CHK | STAKEM | 07JULY2014 | TE Connectivity Harrisburg, PA 17105-3608 |
| CHK | G. BAILEY | 07JULY2014 | |
| APVD | T. ELBIN | 07JULY2014 | NAME |
| PRODUCT SPEC | | | Ocean End Feed Applicator |
| APPLICATION SPEC | | | |
| SIZE | CAGE CODE | DRAWING NO | RESTRICTED TO |
| A1 | 00779 | 2150450 | - |
| Customer Accessible Production Drawing | | | SHEET 1 OF 4 REV C |

| LOC | | DIST | | REVISIONS | | | |
|-----|----|------|-----|-------------|------|-----|------|
| A | 66 | P | LTM | DESCRIPTION | DATE | DWN | APVD |
| | | - | | SEE SHEET 1 | | | |

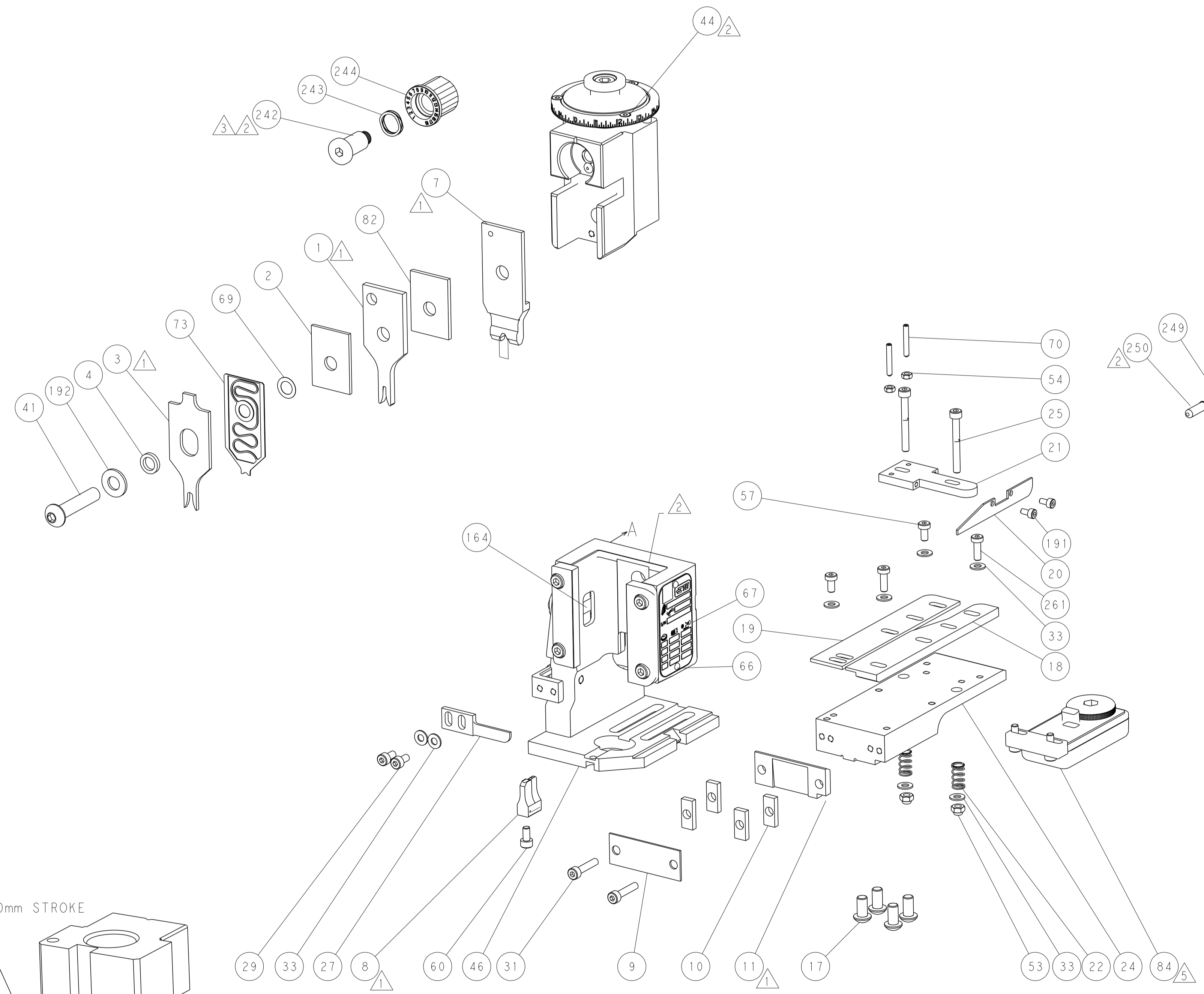
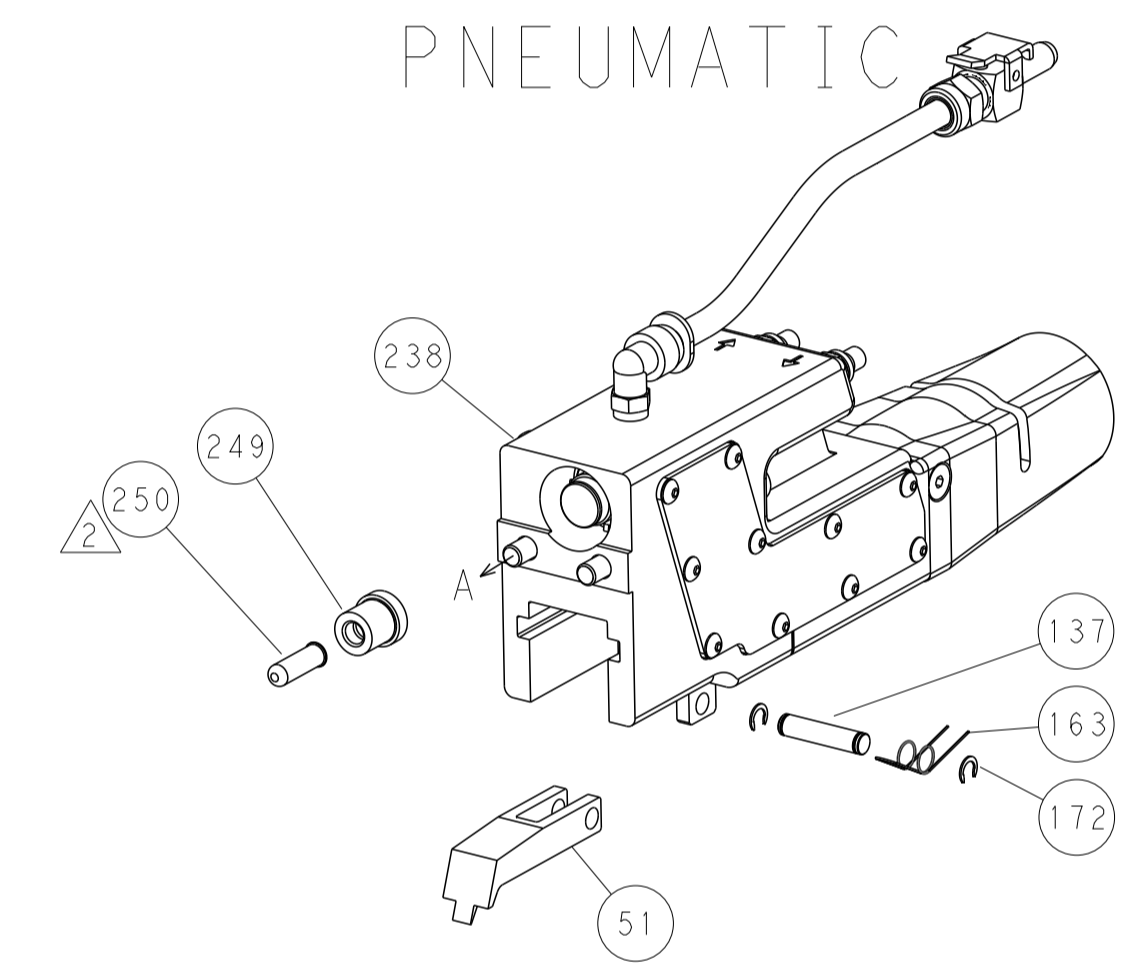


RAM SET-UP

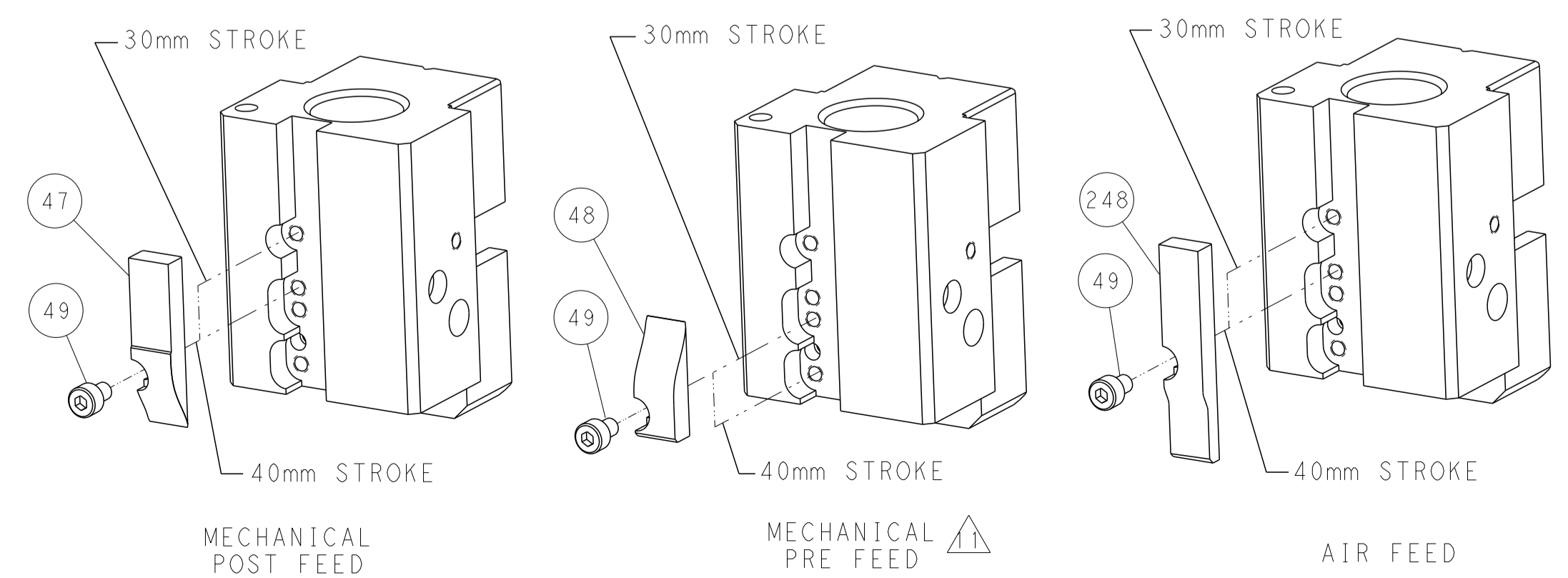
FEED TYPE
MECHANICAL



PNEUMATIC



CAM POSITIONS

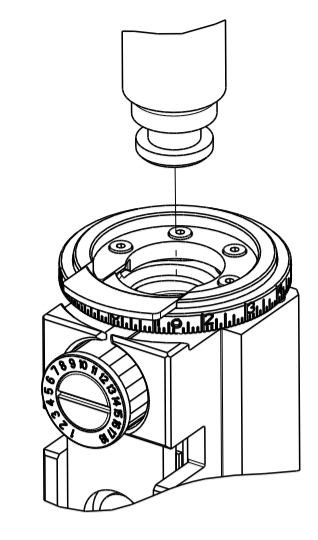


ATLANTIC VERSION
 Shown on sheets 1 of 4 & 2 of 4
 (Pacific version shown on sheets 3 of 4 & 4 of 4)

| | | | | |
|---|--|--|--|--|
| <small>THIS DRAWING IS UNPUBLISHED. RELEASED FOR PUBLICATION BY TYCO ELECTRONICS CORPORATION. ALL RIGHTS RESERVED.</small> | | DWN: K. STAKEM 07JULY2014 CHK: G. BAILEY 07JULY2014 APVD: T. ELRLIN 07JULY2014 | NAME: Ocean End Feed Applicator SIZE: A1 CAGE CODE: 00779 DRAWING NO: 2150450 | TE Connectivity Harrisburg, PA 17105-3608 |
| DIMENSIONS: mm TOLERANCES UNLESS OTHERWISE SPECIFIED: 0 PLC ± 1 PLC ± 2 PLC ± 3 PLC ± 4 PLC ± ANGLES ± FINISH | WEIGHT: - SCALE: 1:1 SHEET: 2 of 4 REV: C | RESTRICTED TO: - Customer Accessible Production Drawing | | |

| PART NUMBER | REVISION | DESCRIPTION | FEED TYPE |
|-------------|----------|--------------------------|------------|
| 2-2150450-1 | C | FINE CRIMP HEIGHT ADJUST | MECHANICAL |
| 2-2150450-2 | C | FINE CRIMP HEIGHT ADJUST | PNEUMATIC |
| 7-2150450-7 | B | CRIMP TOOLING KIT | - |

PACIFIC VERSION TERMINATOR
 INTERFACE ADAPTER



APPLICATOR DATA

| CRIMP | SIZE | TYPE |
|-------|----------------|------|
| WIRE | 1.78 mm [.070] | F |
| INSUL | 3.56 mm [.140] | OV |

APPL INSTRUCTIONS
 408-35043

TERMINAL DATA: TE TERMINAL TE CRIMP SPECIFICATION

TERMINAL NAME: RECEPTACLE, FASTON FLAG, AMPLIVAR

| WIRE STRIP LENGTH | INSULATION DIAMETER RANGE |
|-----------------------------|------------------------------|
| 4.39-5.15 mm [.173-.203 IN] | Ø2.54-3.05 mm [1.00-.120 IN] |

TERMINAL APPLICATION SPECIFICATION 114-2152

TERMINALS APPLIED 5

| TE TERMINAL | TE TERMINAL | TE TERMINAL | TE TERMINAL |
|-------------|-------------|-------------|-------------|
| 1742881-1 | | | |

| WIRE SIZE | CRIMP HEIGHT mm [INCH] | CRIMP HEIGHT REFERENCE SETTING |
|-----------|-----------------------------|--------------------------------|
| 1900 CMA | 1.45+/-0.000 [.057+/- .000] | 7.0 |
| 500 CMA | 1.17+/-0.000 [.046+/- .000] | 10.0 |



- RECOMMENDED SPARE PARTS
- REFER TO SUPPLIED INSTRUCTION SHEET FOR CLEANING, LUBRICATION AND STORAGE OF APPLICATOR.
- APPLY PART NUMBER 2-23419-6 LOCTITE TO THREADS OF ITEM 242.
- CRIMP HEIGHT REFERENCE SETTING WAS THE SETTING USED WHEN THE APPLICATOR WAS QUALIFIED AT THE FACTORY. ADJUSTMENT MAY BE NECESSARY WHEN RUNNING APPLICATOR IN THE FIELD.
- TERMINAL LUBRICANT IS RECOMMENDED.
- UNLESS SPECIFIED OTHERWISE TORQUE VALUES SHALL BE USED PER DOCUMENT, 101-35000.

***WARNING**
 ON INSTALLATION, SET WIRE DISC TO CRIMP HEIGHT REFERENCE SETTING FOR LARGEST WIRE SIZE. CRIMP HEIGHT REFERENCE SETTINGS GREATER THAN THE VALUE SHOWN MAY CAUSE DAMAGE TO THE CRIMP TOOLING. REFER TO THE INSTRUCTION SHEET FOR PROPER SETUP AND ADJUSTMENTS.

| LOC | DIST | REVISIONS | | | | | |
|-----|------|-----------|-----|-------------|------|-----|------|
| | | P | LTN | DESCRIPTION | DATE | OWN | APVD |
| A | 66 | - | - | SEE SHEET 1 | - | - | - |

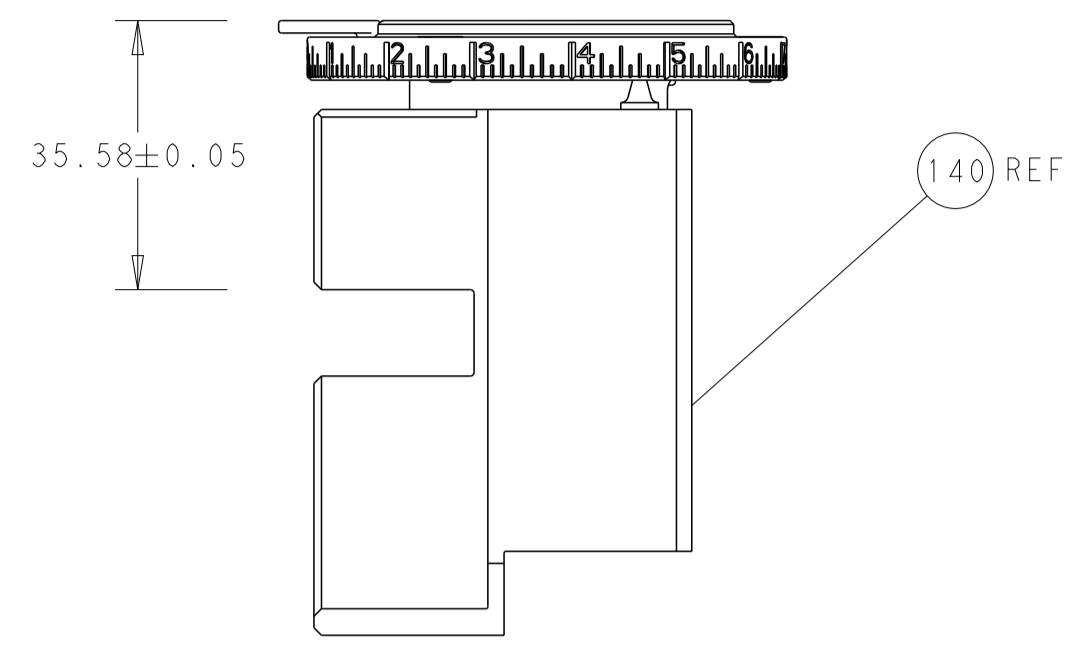
| | | | | | | |
|---|-----|-----|-------------|-------------------------------------|-------------|---------|
| - | 2 | 2 | 2168400-1 | SHCS, LOW HEAD, RoHS, M4 X 12 | 261 | |
| - | 1 | - | 2119640-1 | PUSH ROD, AIR FEED | 250 | |
| - | 1 | - | 1803259-1 | BUSHING, FLANGED | 249 | |
| - | 1 | 1 | 2119082-4 | CAM, SNAIL, INSULATION ADJUSTMENT | 244 | |
| - | 1 | 1 | 2079764-1 | WASHER, WAVE SPRING, CREST-TO-CREST | 243 | |
| 3 | - | 1 | 2119083-1 | RETAINER, INSULATION DIAL | 242 | |
| - | - | 1 | 2119580-1 | MECHANICAL FEED ASSEMBLY | 239 | |
| - | 1 | - | 2063440-1 | AIR FEED MODULE | 238 | |
| - | 1 | 1 | 1-18028-0 | WASHER, FLAT, REG M8 | 192 | |
| - | 2 | 2 | 1-2168083-1 | SCR, SKT HD CAP, RoHS, M3 X 6 | 191 | |
| - | 4 | 4 | 2079383-9 | SCR, BHSC, RoHS (M6 X 20) | 186 | |
| - | 2 | - | 21045-3 | RING, RETAIN, EXTERN, 3/16 CRESCENT | 172 | |
| - | REF | REF | 994970-2 | COUNTER, MAGNETIC | 164 | |
| - | 1 | - | 240638-1 | SPRING, FEED FINGER | 163 | |
| - | 1 | - | 2119641-2 | FEED CAM, AIR FEED | 152 | |
| - | 1 | 1 | 2168083-8 | SCR, SKT HD CAP, RoHS, M4 X 16 | 144 | |
| - | - | 1 | 2119653-2 | FEED CAM, POST FEED | 142 | |
| - | 1 | 1 | 2119655-6 | APPLICATOR BASIC ASSEMBLY, EF | 141 | |
| - | 1 | 1 | 1803518-2 | RAM ASSEMBLY, EF PACIFIC | 140 | |
| - | 1 | - | 3-23627-7 | PIN, RETAIN, GRVD, 3/16 X .854 | 137 | |
| 5 | - | 1 | 2119955-2 | ASSY, LUBRICATOR, END FEED | 84 | |
| - | 1 | 1 | 2-455888-3 | SPACER, CRIMPER | 82 | |
| - | 1 | 1 | 2119791-5 | DEPRESSOR, WIRE | 73 | |
| - | 1 | 1 | 1803607-2 | DOCUMENTATION PACKAGE | 71 | |
| - | 2 | 2 | 3-18032-3 | SCR, SET, FLT PNT, M3 X 20.0 | 70 | |
| - | 1 | 1 | 2119943-1 | WASHER, SPACER | 69 | |
| - | 1 | 1 | 2119740-1 | TAG, IDENTIFICATION | 67 | |
| - | 2 | 2 | 2168078-1 | SCREW, DRIVE, RH, RoHS, 2 x .188 | 66 | |
| - | - | 1 | 5-18022-5 | SCR, HEX HD CAP, M4 X 6.0 | 59 | |
| - | - | 1 | 2063961-5 | FEED FINGER | 58 | |
| - | 2 | 2 | 2168400-4 | SHCS, LOW HEAD, RoHS, M4 X 8 | 57 | |
| - | 2 | 2 | 5018030-1 | NUT, HEX, REG, RoHS, M3 | 54 | |
| - | 2 | 2 | 986965-8 | NUT, LOCK, HEX, TORQUE (M4) | 53 | |
| - | 1 | - | 2119792-9 | PAWL, EF, AIR | 51 | |
| - | 1 | 2 | 18023-9 | SCR, SKT HD CAP M4 X 6.0 | 49 | |
| - | - | 1 | 2119652-1 | FEED CAM, PRE FEED | 48 | |
| - | 1 | 1 | 1803602-2 | SCR, BHSC, RoHS (M8 X 40) | 41 | |
| - | 8 | 8 | 1-18028-2 | WASHER, FLAT, REG M4 | 33 | |
| - | 2 | 2 | 2168083-9 | SCR, SKT HD CAP, RoHS, M4 X 20 | 31 | |
| - | 2 | 2 | 2168083-2 | SCR, SKT HD CAP, RoHS, M4 X 8.0 | 29 | |
| - | 1 | 1 | 240639-3 | STRIPPER (MACHINING) | 27 | |
| - | 2 | 2 | 1-2168083-6 | SCR, SKT HD CAP, RoHS, M4 X 35 | 25 | |
| - | 1 | 1 | 2161922-5 | PLATE, STRIP GUIDE | 24 | |
| - | 2 | 2 | 22281-8 | SPRING, COMPRESSION | 22 | |
| - | 1 | 1 | 1-1633168-0 | ARM, STOCK DRAG | 21 | |
| - | 1 | 1 | 464452-2 | DRAG, STOCK | 20 | |
| - | 1 | 1 | 1-1901259-2 | GUIDE, LOWER STRIP | 19 | |
| - | 1 | 1 | 3-1901695-2 | STRIP GUIDE, FRONT | 18 | |
| 1 | - | 1 | 461160-3 | PLATE, REAR SHEAR | 11 | |
| - | 4 | 4 | 7-240645-4 | SPACER, SHEAR PLATE | 10 | |
| 1 | - | 1 | 455961-5 | PLATE, FRONT SHEAR | 9 | |
| 1 | 1 | 1 | 1803645-1 | ANVIL, COMBINATION | 8 | |
| 1 | - | 1 | 2-459722-8 | BLADE, SHEAR | 7 | |
| - | - | - | - | - | 6 | |
| - | 1 | 1 | 1-238011-0 | BLOCK, CRIMPER SPACER | 4 | |
| 1 | 1 | 1 | 2119785-6 | CRIMPER, INSULATION OVERLAP PREMIUM | 3 | |
| - | 1 | 1 | 1-455888-8 | SPACER, CRIMPER | 2 | |
| 1 | 1 | 1 | 7-456404-3 | CRIMPER, WIRE PREMIUM | 1 | |
| - | 77 | 22 | 21 | PART NO | DESCRIPTION | ITEM NO |

PACIFIC VERSION
 Shown on sheets 3 of 4 & 4 of 4
 (Atlantic version shown on sheets 1 of 4 & 2 of 4)

| | | | | | | | | | | | |
|----------------|--|--|--|------------------------|--|---------------------------|--|---------------------------|--|---------------------------------|--|
| DIMENSIONS: mm | | TOLERANCES UNLESS OTHERWISE SPECIFIED: | | DWN: STAKEM 07JULY2014 | | CHK: G. BAILEY 07JULY2014 | | APVD: T. ELBIN 07JULY2014 | | NAME: Ocean End Feed Applicator | |
| 0 PLC ± | | 1 PLC ± | | 2 PLC ± | | 3 PLC ± | | 4 PLC ± | | RESTRICTED TO | |
| MATERIAL: | | FINISH: | | WEIGHT: | | SCALE: 1:1 | | SHEET 3 OF 4 | | REV C | |

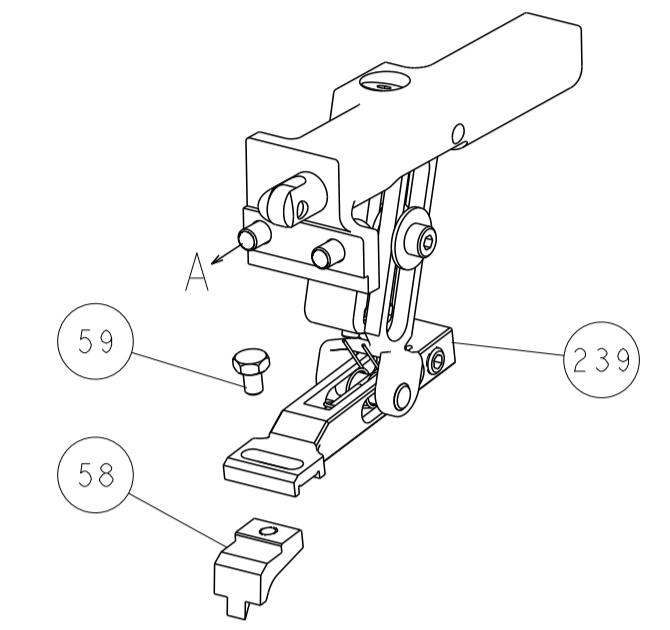
Customer Accessible Production Drawing

| LOC | | DIST | | REVISIONS | | | |
|-----|----|------|-----|-------------|------|-----|------|
| A | 66 | P | LTM | DESCRIPTION | DATE | OWN | APVD |
| | | - | | SEE SHEET 1 | | | |

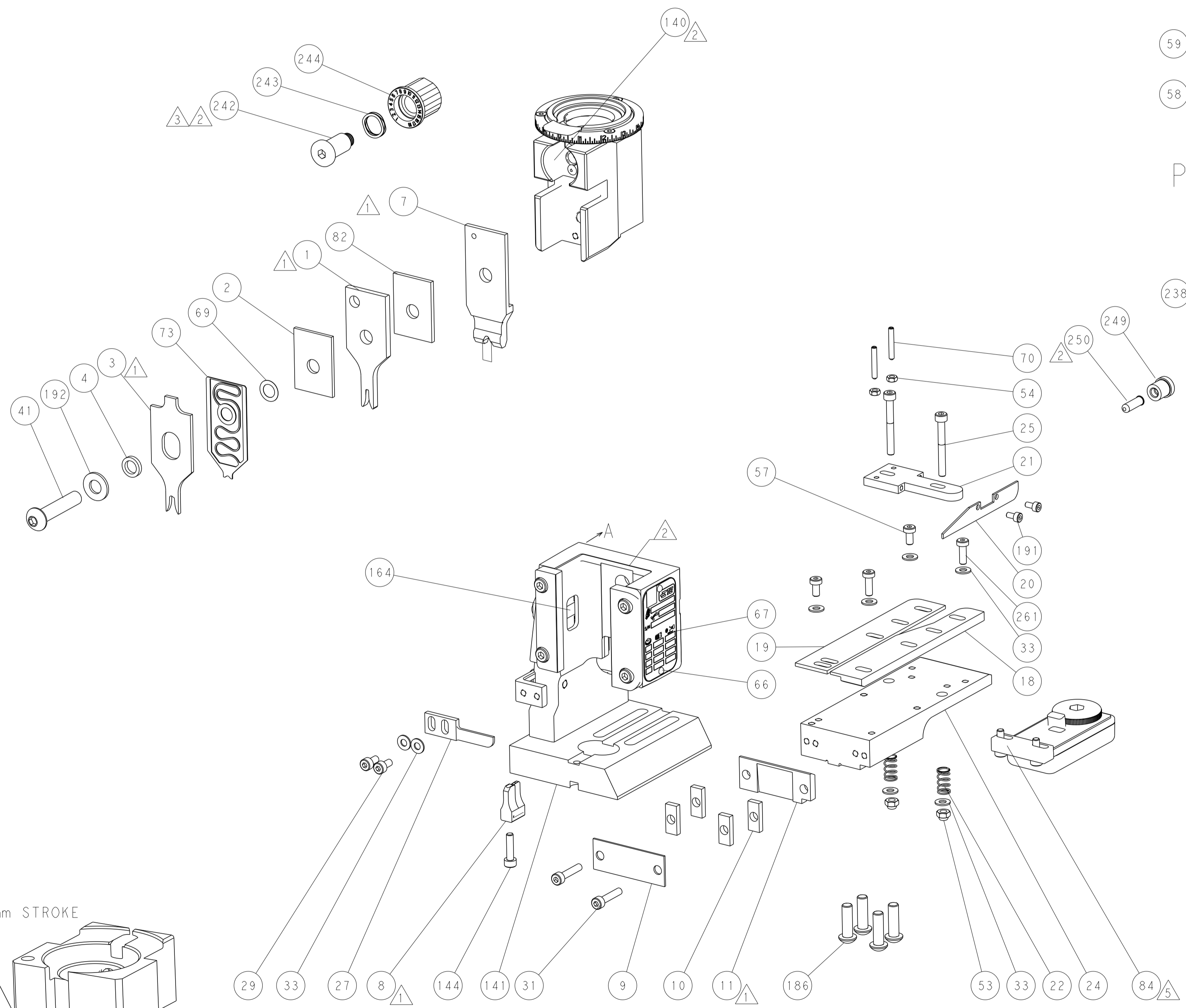
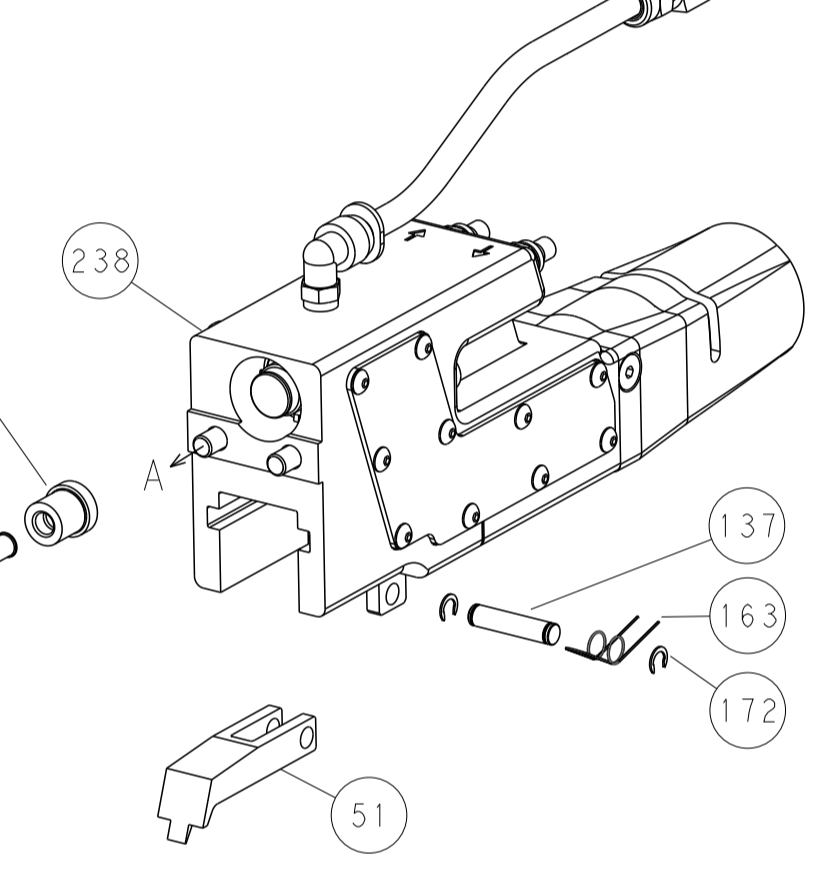


RAM SET-UP

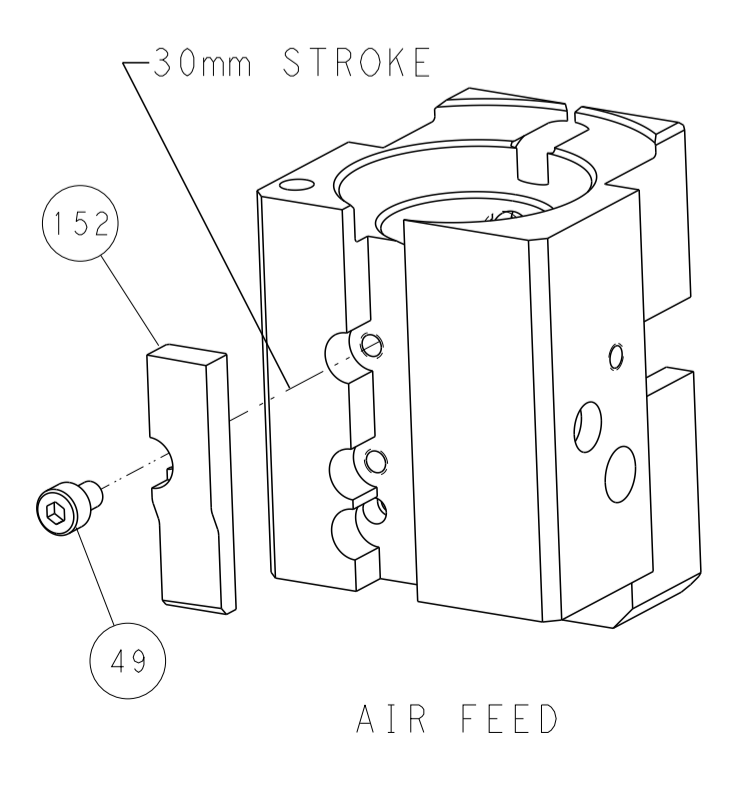
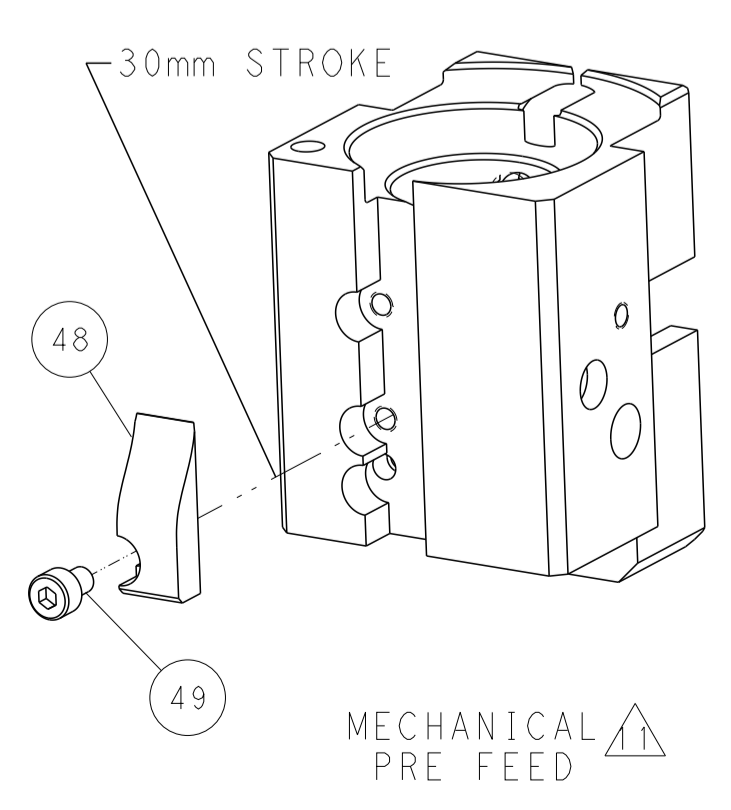
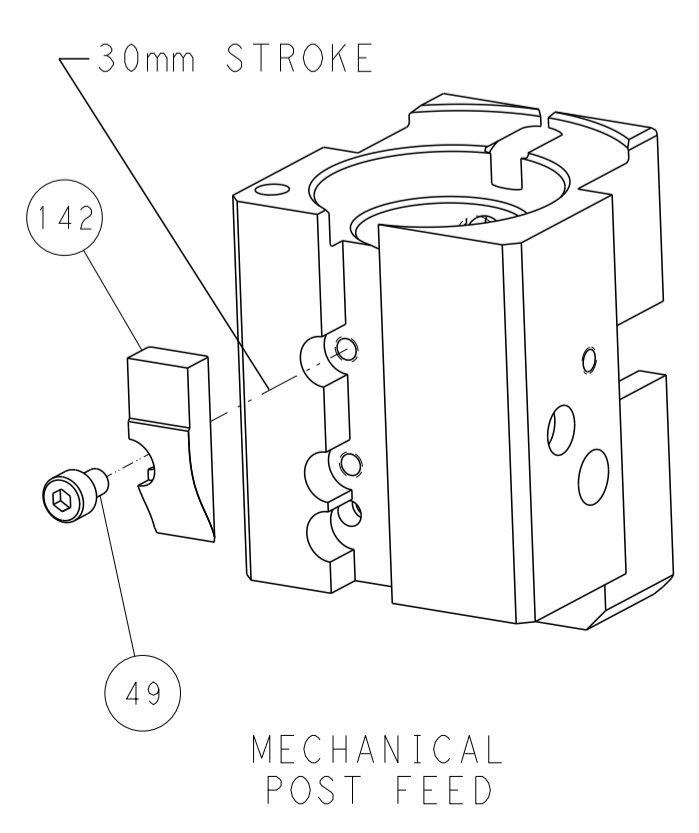
FEED TYPE
MECHANICAL



PNEUMATIC



CAM POSITIONS



PACIFIC VERSION
 Shown on sheets 3 of 4 & 4 of 4
 (Atlantic version shown on sheets 1 of 4 & 2 of 4)

| | | | | | | | | | |
|-----------------------|--|---|--|--|--|---|--|--------------------|--|
| DIMENSIONS: mm | | TOLERANCES UNLESS OTHERWISE SPECIFIED: 0 PLC ± 1 PLC ± 2 PLC ± 3 PLC ± 4 PLC ± ANGLES ± FINISH | | DWN K. STAKEM 07JULY2014 CHK G. BAILEY 07JULY2014 APVD T. ELBIN 07JULY2014 PRODUCT SPEC APPLICATION SPEC WEIGHT Customer Accessible Production Drawing | | NAME Ocean End Feed Applier SIZE CAGE CODE DRAWING NO A1 00779 C-2150450 SCALE 1:1 SHEET 4 OF 4 REV C | | RESTRICTED TO - | |
|-----------------------|--|---|--|--|--|---|--|--------------------|--|