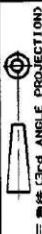
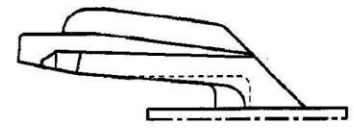
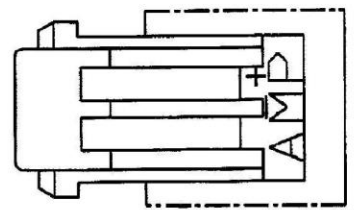
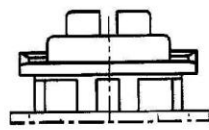


NUMBER C-177901

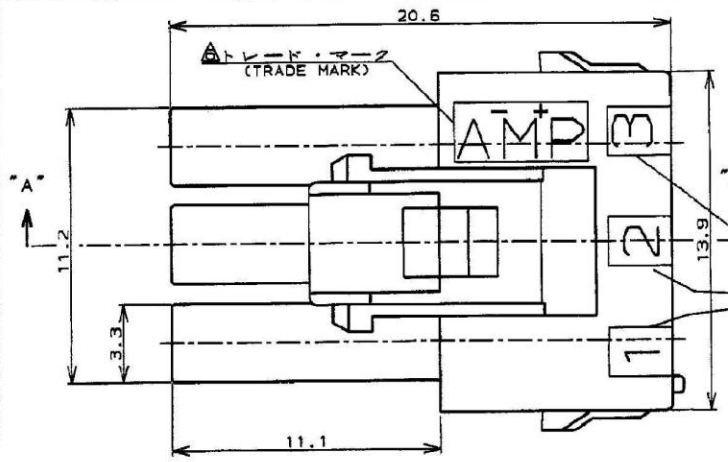


METRIC

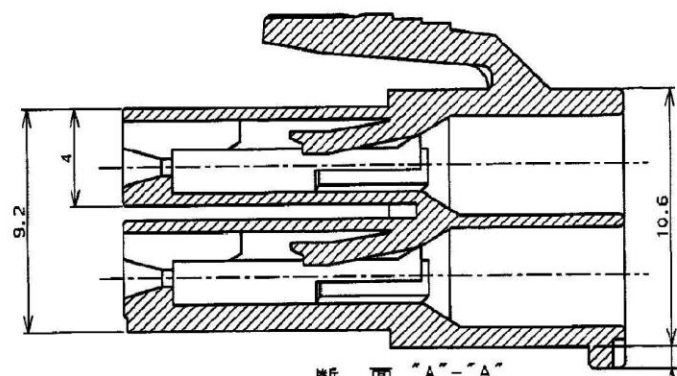
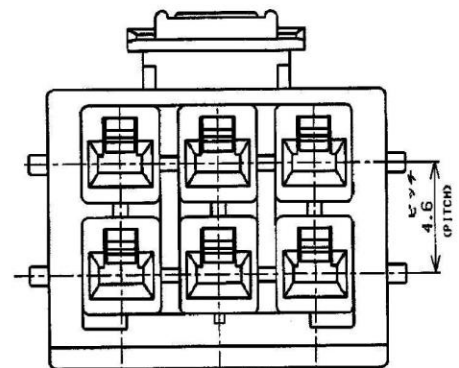
ロックタイプII
LOCK TYPE II



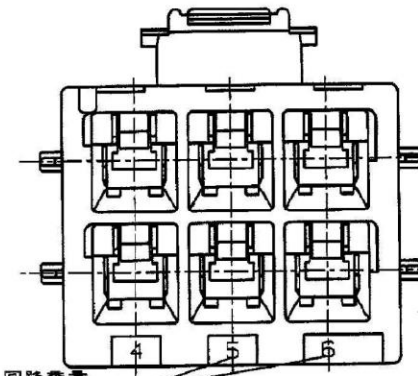
本図ロックタイプIを示す
AS SHOWN LOCK TYPE I



回路番号
(CIRCUIT No.)



断面 "A-A"
(SECT)



回路番号
(CIRCUIT No.)

表1 (TABLE 1)

トレードマーク (TRADE MARK)	生産場所 (MANUFACTURING PLACE)
— AMP OR AMP	日本 (JAPAN)
—+ AMP OR AMP	中国 (CHINA(PRC))
— AMP OR AMP	韓国 (KOREA)

表1 (TABLE 1)

- ALL PARTS MEET RTI ELECTRICAL RATING OF 105C ACCORDING TO UL 1977
 - PART 1-177901-5 MEET BELOW REQUIREMENT. MATERIAL: NYLON UL 94-V0 BLACK. MAXIMUM RATING TEMPERATURE 150C
 - PART 5-177901-1 COMPLY WITH GLOW WIRE REQUIREMENT FOR PARTS OF NON-METALLIC MATERIAL SUPPORTING A CURRENT-CARRYING CONNECTION DETAILED IN IEC 60335-1, SECTION 30 (GWT)
10. APPLICATION SPEC: 114-5175

- NOTES: 1. PRODUCT SPEC: 108-5410
2. APPLICABLE CONTACT P/N
REC CONTACT: 177915-□ (*20- 16AWG)
177914-□ (*26- 22AWG)
3. MATING CONN, P/N
CAP HSG: 177909-□ (PANEL MOUNT)
TAB CONTACT: 177917-□ (*20- 16AWG)
177916-□ (*26- 22AWG)
4. APPLICABLE PLATE P/N: 177919-□
5. INSTRUCTION SHEET: 411-5638

ロックタイプI	黒色 (NATURAL)	6	5-177901-1
ロックタイプII	青 (BLUE)	6	3-177901-6
ロックタイプII	黒色 (NATURAL)	6	3-177901-1
ロックタイプ	ハウジング色調	極数	型番
LOCK TYPE	(HOUSING COLOR)	(Pos.)	(P/N)

黒 (BLACK)	6	1-177901-5	
青 (BLUE)	↑	-6	
黄 (YELLOW)	↑	-4	
赤 (RED)	↓	-2	
黒色 (NATURAL)	6	177901-1	
ロックタイプI			
ロックタイプII			
ロックタイプ	ハウジング色調	極数	型番
LOCK TYPE	(HOUSING COLOR)	(Pos.)	(P/N)

R6	REVISED PER ECR-19-017851	SM	DZ	20NOV 39
R5	REVISED PER ECR-13-019881	A.Z	D.Z	20DEC12
R4	REVISED PER ECR-12-013854	A.Z	F.M	02JAN12
R3	REVISED PER ECR-12-010818	A.Z	F.M	14JUN12
R2	REVISED PER ECR-12-010382	A.Z	F.M	07JUN12
LTR	変更 (REVISION RECORD)	DR	CHK	DATE

材料 (MATERIAL)	6/6 NYLON (ULB4Y-0)
仕上げ (FINISH)	—
DR.	9. SEP '93 M. SUZUKI
DE.	9. SEP '93 M. SUZUKI
CHK.	9. SEP '93 M. SHINDO
APP.	9. SEP '93 Y. KASHIWA

名称 (NAME)	AMP POWER DOUBLE LOCK CONN.		
5極 3.96mmピッチ プラグハウジング (2列タイプ)			
AMP POWER DOUBLE LOCK CONN. 3.96mm PITCH PLUG HOUSING 5 Pos (DBL ROW)			
一般公差	SIZE LOC	番号 (No.)	
10mm: ±0.2	A3 J	C-177901	
10mm以上 30mm以下: ±0.25	尺度 (SCALE)	REV.	SHEET
30mm以上 100mm以下: ±0.3	—	R6	1 OF 1
100mm以上: ±0.5			

PRINT DIST DIMENSIONS IN MM. DO NOT SCALE PRINT

CUSTOMER DRAWING