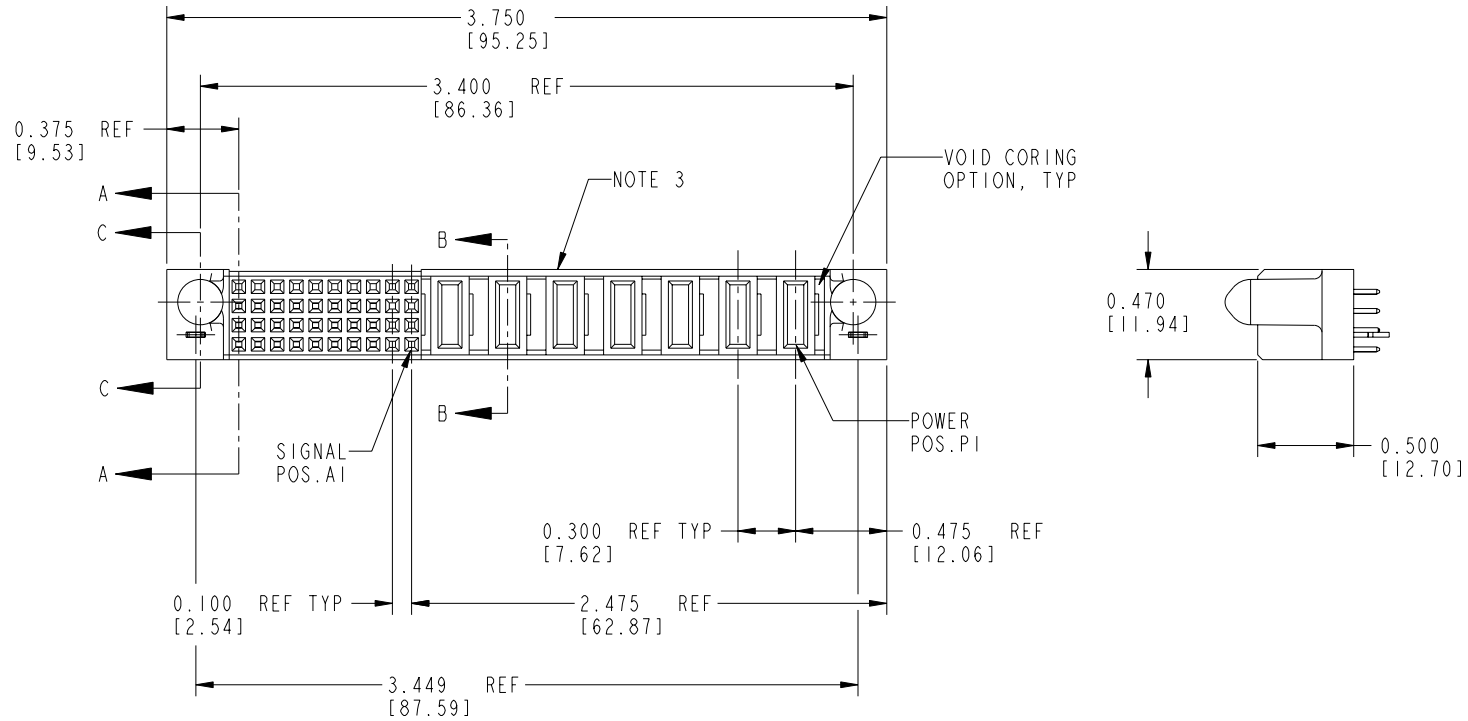


Tous droits strictement réservés. Reproduction ou communication a des tiers interdite sous quelque forme que ce soit sans autorisation écrite du propriétaire. Propriété de c FCI. Droits de reproduction FCI.

FCI

All rights strictly reserved. Reproduction or issue to third parties in any form whenever is not permitted without written authority from the proprietor. Property of FCI. Copyright FCI.

PRODUCT No.	ROWS	SIGNAL										POWER								
		E2	10	9	8	7	6	5	4	3	2	1	P7	P6	P5	P4	P3	P2	P1	E1
51658-001-- NOTE: ②	D	X	X	X	X	X	X	X	X	X	X									
	C	E	E	E	E	E	E	E	E	E	X		PD							
	B	E	E	E	E	E	E	E	E	E	X		PD		X					
	A	E	E	E	E	E	E	E	E	E	X			PD	PD		X		PA	



CONFIDENTIAL

CODE	DIM "M" ±0.010 [0.25]	CONTACT TYPE
E	N/A [N/A]	SIGNAL
PA	0.042 [1.07]	POWER
PD	0.092 [2.34]	POWER
HA	N/A [N/A]	HOLD-DOWN
X	OMITTED	OMITTED

mat'l code				SEE NOTES		tolerances unless otherwise specified		CUSTOMER	
ltr	ecn no.	dr	date	linear	.XX±.01/.X±.3	projection	COPY		
A	V02392	JRW	10-09-00	angles	.XXX±.005/.XX±.13	INCH / MM	title 7P + 40S		
B	V02939	CGD	12-19-00		.XXX±.0020/.XXX±.051	scale	VERTICAL SOLDER RECEPTACLE		
C	DG05-0301	CS	08/29/05		0°±2°	1:1	product family PwrBlade		code 213
				dr	C. BAROT 05-11-99		size	dwg no	sheet 1 of 3
				engr	J. BROWN 05-11-99		A	51658	
				chr	J. BROWN 05-11-99				
				appd	J. BROWN 05-11-99				
sheet index	revision sheet	C	C						
		1	2						

Pro/E

cage code 22526

PDM: Rev:C

STATUS: **Released**

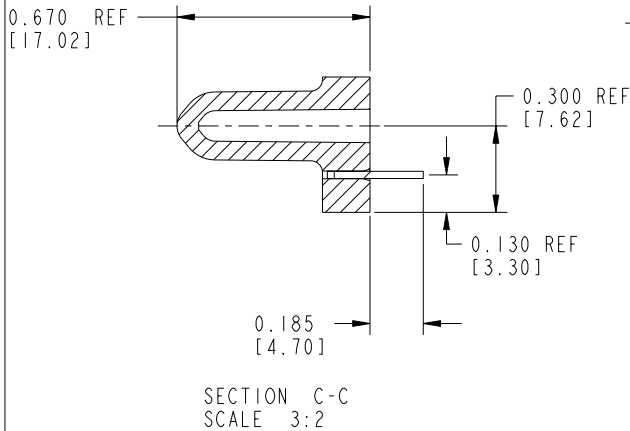
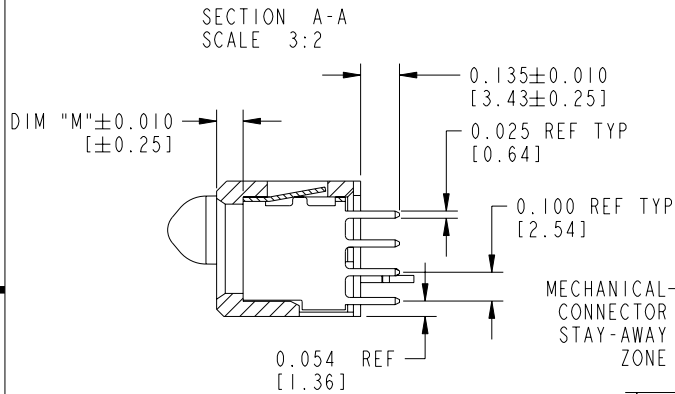
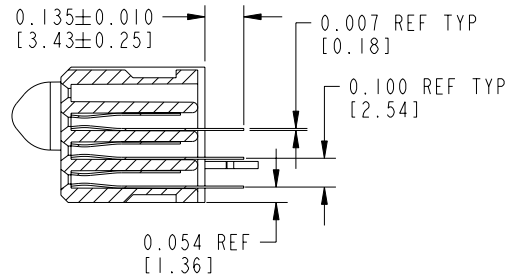
Printed: Dec 20, 2010

Tous droits strictement réservés. Reproduction ou communication a des tiers interdite sous quelque forme que ce soit sans autorisation écrite du propriétaire. Propriété de c FCI. Droits de reproduction FCI.

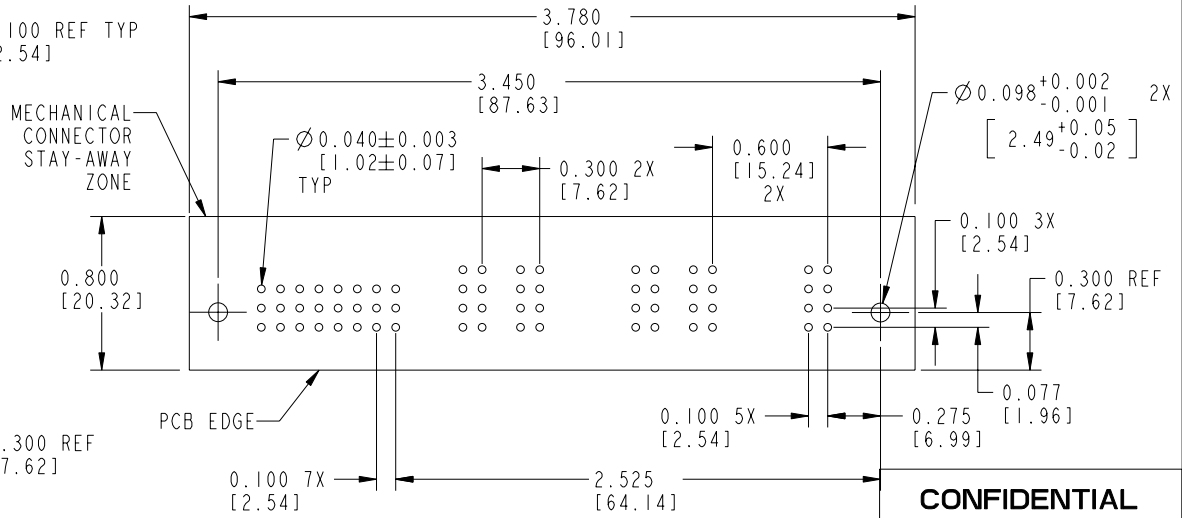
FCI

All rights strictly reserved. Reproduction or issue to third parties in any form whatever is not permitted without written authority from the proprietor. Property of FCI. Copyright FCI.

PRODUCT NUMBER
51658-001--
NOTE: ②



RECOMMENDED PCB LAYOUT



CONFIDENTIAL

mat'l code				SEE NOTES		tolerances unless otherwise specified		CUSTOMER		 www.fciconnect.com	
ltr	ecr no.	dr	date	linear	.XX±.01/.X±.3	projection	COPY		title		7P + 40S
C				angles	.XXX±.005/.XX±.13		VERTICAL SOLDER RECEPTACLE		product family		PWRBLADE
				dr	.XXX±.0020/.XXX±.051		INCH / MM		size		213
				enr	0°±2°	scale		dwg no		sheet	
				chr		2:1		A		2 of 3	
				appd				51658			
sheet index		revision sheet									

cage code 22526

Pro/E

3

4

PDM: Rev:C

STATUS: **Released**

Printed: Dec 20, 2010

Tous droits strictement réservés. Reproduction ou communication a des tiers interdite sous quelque forme que ce soit sans autorisation écrite du propriétaire. Propriété de c FCI. Droits de reproduction FCI.

A
FCI

All rights strictly reserved. Reproduction or issue to third parties in any form whatever is not permitted without written authority from the proprietor. Property of FCI. Copyright FCI.

B

PRODUCT NUMBER

51658-001__
NOTE: ②

CONNECTOR NOTES:

- ①. HOUSING MATERIAL: UL 94 V-0 GLASS FILLED HIGH TEMP THERMOPLASTIC
SIGNAL CONTACT MATERIAL: COPPER ALLOY
POWER CONTACT MATERIAL: COPPER ALLOY
- ②. PLATING:

51658-001 Singal Pin: 30u"/0.76um Au OVER 50u"/1.27um Ni ON THE CONTACT AREA,
AND 100u"/2.54um SnPb PLATING OVER 50u"/1.27um Ni ON THE TERMINATION SECTION.
Power Pin: 30u"/0.76um Au OVER 50u"/1.27um Ni ON THE CONTACT AREA,
AND 100u"/2.54um SnPb PLATING OVER 50u"/1.27um Ni ON THE TERMINATION SECTION.

51658-001LF Singal Pin: 30u"/0.76um Au OVER 50u"/1.27um Ni ON THE CONTACT AREA,
AND 78u"/2.00um Sn PLATING OVER 50u"/1.27um Ni ON THE TERMINATION SECTION.
Power Pin: 30u"/0.76um Au OVER 50u"/1.27um Ni ON THE CONTACT AREA,
AND 78u"/2.00um Sn PLATING OVER 50u"/1.27um Ni ON THE TERMINATION SECTION.

PART NUMBER 51658-001LF MEETS EUROPEAN UNION DIRECTIVE AND OTHER COUNTRY REGULATIONS AS DESCRIBED IN GS-22-008.


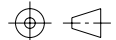
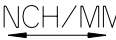
THE HOUSING WILL WITHSTAND EXPOSURE TO 260° PEAK TEMPERATURE FOR 10 SECONDS IN A WAVE SOLDER APPLICATION WITH A CIRCUIT BOARD.

- 3. MANUFACTURER NAME, P/N AND DATE CODE TO APPEAR ON THIS SURFACE.
- 4. PRODUCT SPECIFICATION GS-12-149

PCB NOTES:

- 5. ALL DIMENSIONS ARE BASIC UNLESS OTHERWISE SPECIFIED.
- 6. ALL THROUGH HOLES ARE LOCATED WITH A TRUE POSITION OF 0.004 [0.10]
- 7. ALL HOLE DIAMETERS ARE FINISHED HOLE SIZE
- 8. Ø0.098 [2.49] THROUGH HOLES ARE UNPLATED
- 9. Ø0.0453±0.0010 [1.151±0.025] DRILLED HOLES PLATED WITH 0.0003 [0.008] MIN SnPb OVER 0.001 [0.03] TO 0.003 [0.08] Cu PLATING TO ACHIEVE A Ø0.040±0.003 [1.02±0.07 HOLE]

CONFIDENTIAL

mat'l code		SEE NOTES		tolerances unless otherwise specified		CUSTOMER		 www.fciconnect.com	
ltr	ecr no.	dr	date	linear	.XX±.01/.X±.3	COPY			
C				projection	.XXX±.005/.XX±.13			title 7P + 40S VERTICAL SOLDER RECEPTACLE	
				angles	.XXX±.0020/.XX±.051			product family PwrBlade	
				dr	0°±2°	INCH/MM		code 213	
				enr	C. BAROT 05-11-99	scale 1:1		sheet 3 of 3	
				chr	J. BROWN 05-11-99	A		51658	
				appd	J. BROWN 05-11-99				
sheet index	revision sheet								

B

1 | 2

3 |

4

1 | 2

Pro/E

3 |

cage code 22526

4