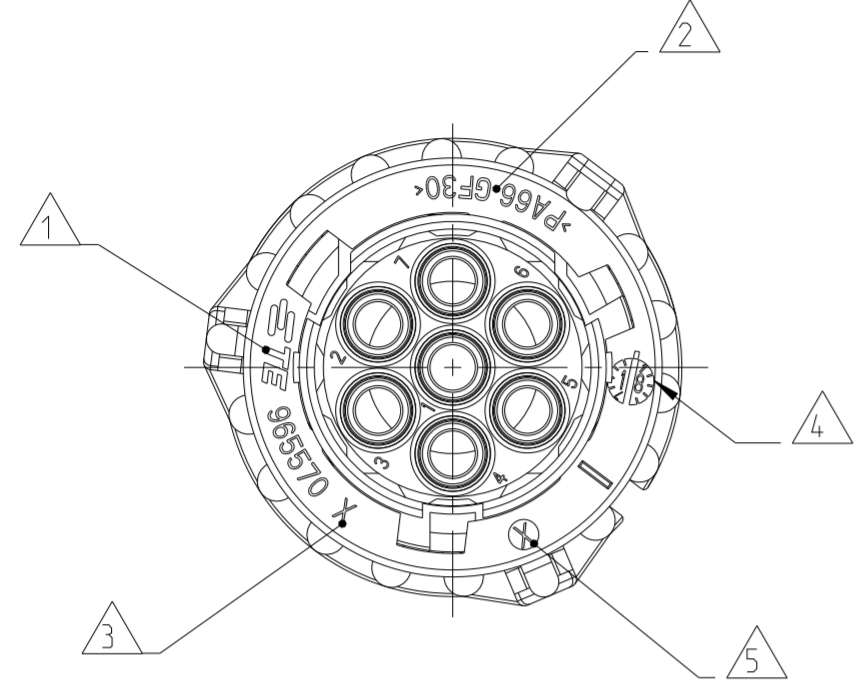
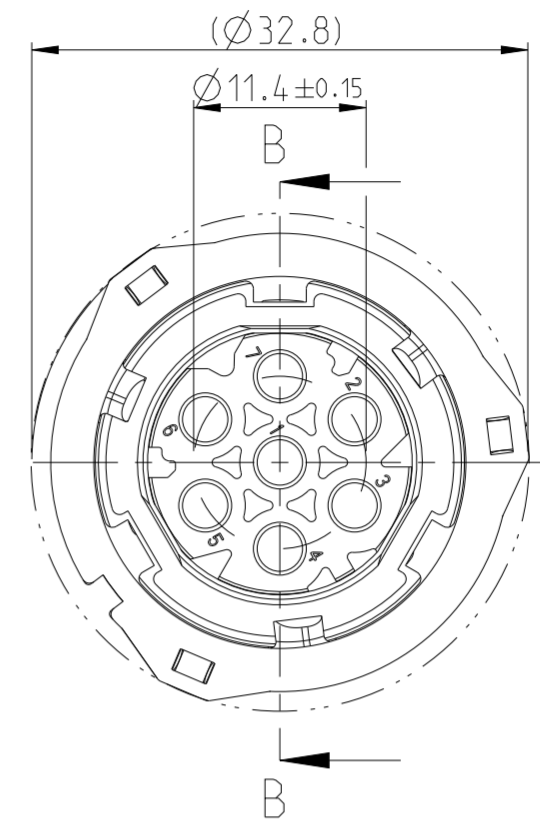
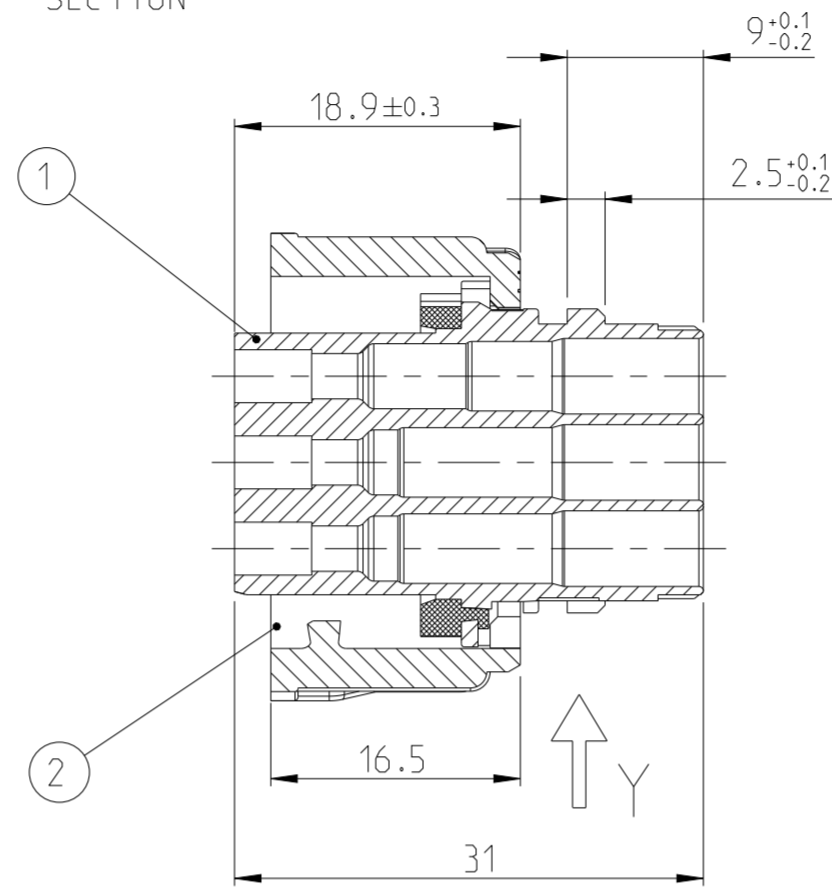


LOC	DIST	REVISIONS			
P	LTR	DESCRIPTION	DATE	DWN	APVD
A1	-	REVISED PER ECO-11-005150	30MAR2011	RK	HMR
		REVISED PER ECO-13-005564	18APR2013	RD	JG
		REVISED PER PCN-22-143834	14JUN2022	HH	AW

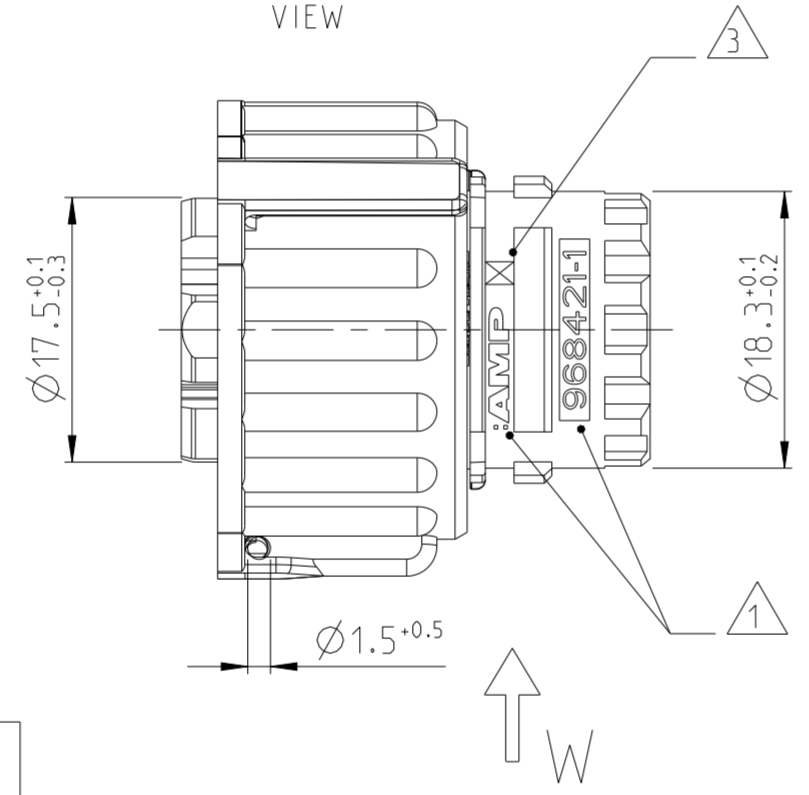
Kupplungsring in Vorraststellung  
COUPLING-RING IN PRE-LOCKED POSITION



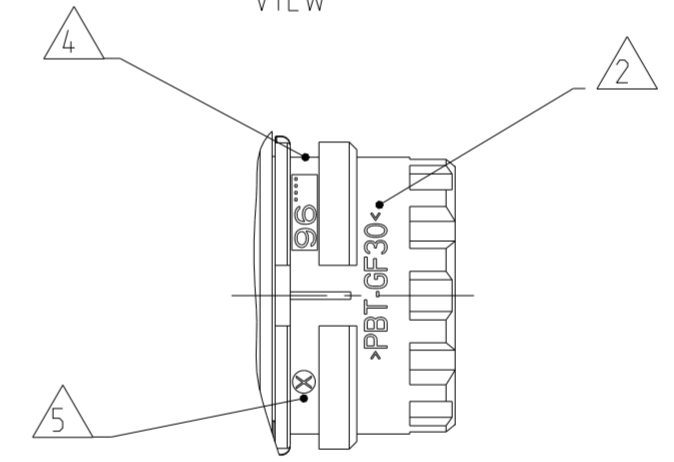
Schnitt B-B SECTION



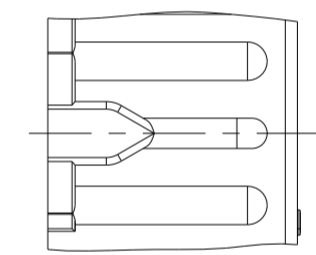
Ansicht X VIEW



Ansicht Y VIEW

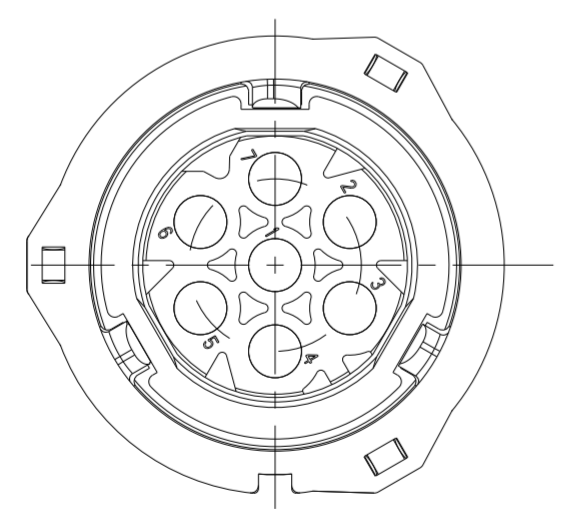


Ansicht W VIEW (2x)

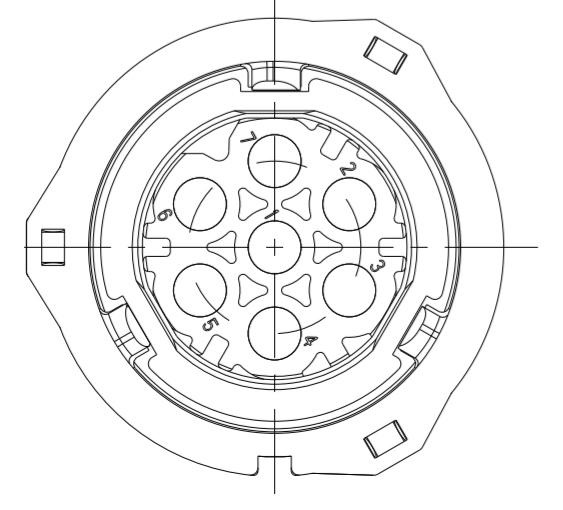


FURTHER CODINGS: weitere Kodierungen

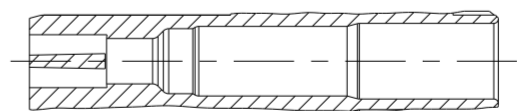
CODING C Kodierung



CODING B Kodierung



Verschlossene Kammer in der 5pol. bzw. 6pol. Variante  
CLOSED CAVITY IN THE 5POS. AND 6POS. CONNECTOR



Bestell-Nr. ORDER-NO.	REV.	Bestückbare Kammer USED CONTACT CAVITIES	POS.	Stueck QTY	Benennung Einzelteil DESCRIPTION SINGLE PART	Werkstoff MATERIAL	Oberflaeche/Farbe SURFACE/COLOR
3-967650-1	H	1-7	2	1	Kupplungsring COUPLING RING	PBT-GF30	BLACK/schwarz
			1	1	7pol. Bu.geh. m. Dichtung Kodierung C 7POS. HSG. W. SEALING CODE C	PBT-GF30/Silicone	GREEN/gruen ORANGE
2-967650-1	H	1-7	2	1	Kupplungsring COUPLING RING	PBT-GF30	BLACK/schwarz
			1	1	7pol. Bu.geh. m. Dichtung Kodierung B 7POS. HSG. W. SEALING CODE B	PBT-GF30/Silicone	GREY/grau ORANGE
1-967650-1	H	1-7	2	1	Kupplungsring COUPLING RING	PBT-GF30	BLACK/schwarz
			1	1	7pol. Bu.geh. m. Dichtung Kodierung A 7POS. HSG. W. SEALING CODE A	PBT-GF30/Silicone	BLUE/blau ORANGE
967650-4	H	2-7	2	1	Kupplungsring COUPLING RING	PBT-GF30	BLACK/schwarz
			1	1	6pol. Bu.geh. m. Dichtung Kodierung A 6POS. HSG. W. SEALING CODE A	PBT-GF30/Silicone	BLACK/schwarz ORANGE
967650-3	H	1-5	2	1	Kupplungsring COUPLING RING	PBT-GF30	BLACK/schwarz
			1	1	5pol. Bu.geh. m. Dichtung Kodierung A 5POS. HSG. W. SEALING CODE A	PBT-GF30/Silicone	BLACK/schwarz ORANGE
967650-2	H	1-6	2	1	Kupplungsring COUPLING RING	PBT-GF30	BLACK/schwarz
			1	1	6pol. Bu.geh. m. Dichtung Kodierung A 6POS. HSG. W. SEALING CODE A	PBT-GF30/Silicone	BLACK/schwarz ORANGE
967650-1	H	1-7	2	1	Kupplungsring COUPLING RING	PA66-GF30	BLACK/schwarz
			2	1	Kupplungsring COUPLING RING	PBT-GF30	BLACK/schwarz
			1	1	7pol. Bu.geh. m. Dichtung Kodierung A 7POS. HSG. W. SEALING CODE A	PBT-GF30/Silicone	BLACK/schwarz ORANGE

THIS DRAWING IS A CONTROLLED DOCUMENT. DIESE ZEICHNUNG IST EIN KONTROLLIERTES DOKUMENT.

DIMENSIONS: MASSEINHEITEN: (MM)

TOLERANCES UNLESS OTHERWISE SPECIFIED: ALLGEMEINTOLERANZEN ACC. TO ISO 8015

1 PLC ± ±0.2  
2 PLC ± ±0.2  
3 PLC ± ±0.2  
4 PLC ± ±0.2

ANGLES/WINKEL ±2°  
FINISH/OBERFLAECHE/FARBE SEE TABLE

MATERIAL SEE TABLE  
siehe Tabelle

DWN J. Granzow 07MAR1996	NAME	1.5mm SOCKET CONNECTOR, 5-7POS 1.5mm Buchsenstecker, 5-7pol.
CHK J. Hass 08MAR1996		
APVD Ch. Eberwein 10MAY2010	SIZE	A2
PRODUCT SPEC 108-18622	CAGE CODE	00779
APPLICATION SPEC 114-18255	DRAWING NO. ZEICHNUNGS-NR.	C-967650
WEIGHT 12.32g	SCALE MASSSTAB	2:1
CUSTOMER DRAWING	SHEET BLATT	1 OF 2
	REV	H

THIS DRAWING IS UNPUBLISHED. RELEASED FOR PUBLICATION  
 © COPYRIGHT ALL RIGHTS RESERVED.

LOC		DIST		REVISIONS			
P	LTR	DESCRIPTION		DATE	DWN	APVD	
		SEE SHEET 1					

NOTES  
Bemerkungen

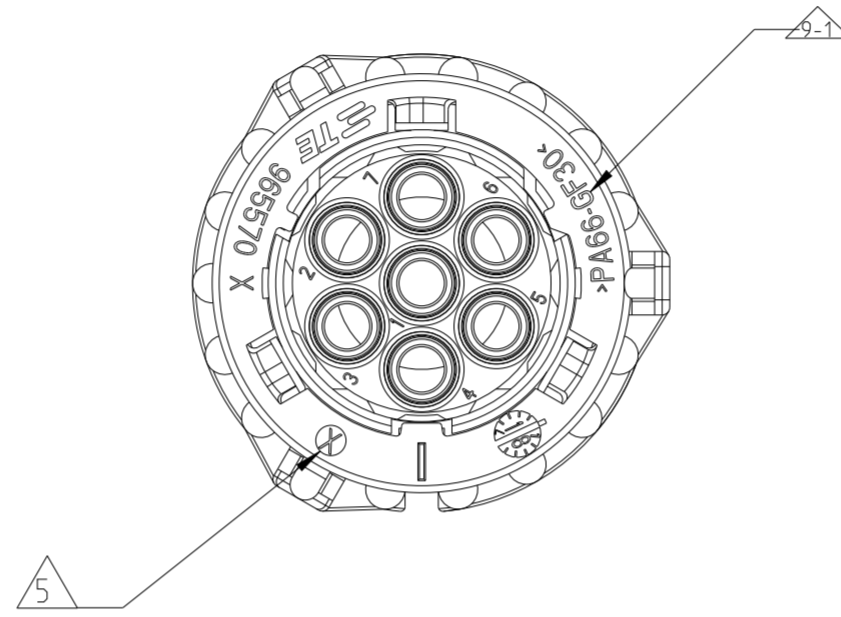
- 1 AMP oder TE CONNECTIVITY (TE) Logo und TE CONNECTIVITY Einzelteilnummer  
AMP OR TE CONNECTIVITY (TE) LOGO AND TE CONNECTIVITY SINGLE PART NUMBER
  - 2 Werkstoffkennzeichnung  
MATERIAL MARKING
  - 3 Werkzeugaenderungsindex  
REVISION OF THE MOULD
  - 4 Produktionsdatum  
PRODUCTION DATE
  - 5 Nestmarkierung  
CAVITY MARKING
- 6 Passend zu Geraeteanschluss 7pol. nach TE CONNECTIVITY-Zeichnung 114-18060-011 und Stiftgehaeuse 7pol. TE CONNECTIVITY-PN 1718230  
 FITS TO COMPONENT INTERFACE 7POS. ACC. TO TE CONNECTIVITY -DRAWING 114-18060-011 AND PIN-HOUSING 7POS. TE CONNECTIVITY-PN 1718230
- 7 Zu verwendende Kontakte und Einzeldichtungen siehe Tabellenzeichnungen:  
 FOR SUITABLE CONTACTS AND SEALS SEE DRAWINGS:
- TE CONNECTIVITY 1355063
- max. Drahtgroesse: 2.5 mm<sup>2</sup> FLR  
 MAX. WIRE THICKNESS:

Es sind nur Kontakte mit Einzeldichtungen einzusetzen!  
 USE ONLY CONTACTS WITH SINGLE WIRE SEALS!

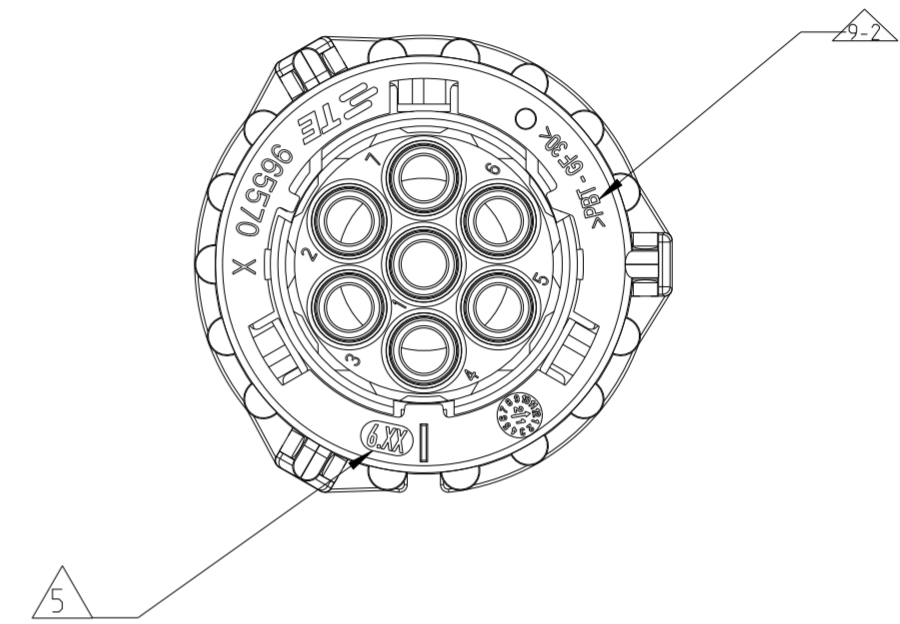
- 8 Vorstrichzahl 1- nicht auf Teil  
DASH-NO. 1- NOT ON PART
- 9 DIFFERENT COUPLING RING COMPONENT USED ACCORDING TO ASSEMBLY REGION:

	REGION	COUPLING RING MATERIAL	CAVITY MARKING
9-1	SOUTH AMERICA - BRAZIL	PA66-GF30	X
9-2	EMEA	PBT-GF30	6.XX

ASSEMBLY USING PA66 COUPLING RING



ASSEMBLY USING PBT COUPLING RING



THIS DRAWING IS A CONTROLLED DOCUMENT.		DWN	<b>STE</b> TE Connectivity			
DIMENSIONS:		CHK				
	TOLERANCES UNLESS OTHERWISE SPECIFIED:	APVD	NAME			
	0 PLC ±	PRODUCT SPEC	APPLICATION SPEC			
	1 PLC ±	APPLIC. SPEC	SIZE	CAGE CODE	DRAWING NO	RESTRICTED TO
	2 PLC ±	WEIGHT	A2	G-		
3 PLC ±	FINISH		SCALE	SHEET	OF	REV
4 PLC ±						
ANGLES ±						