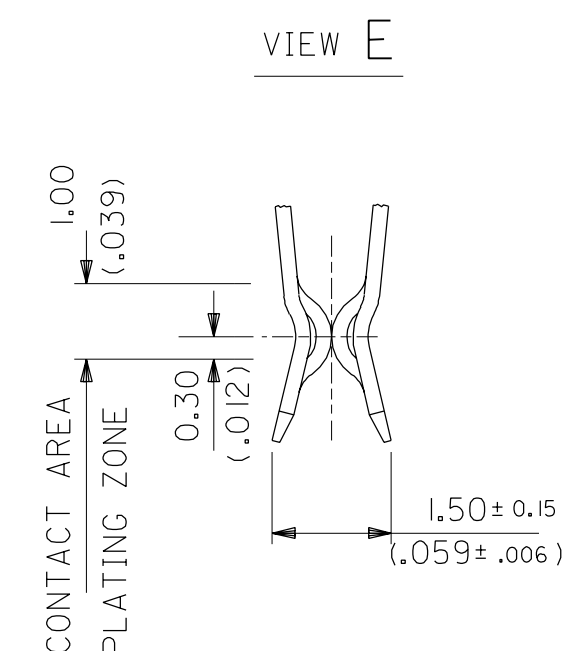
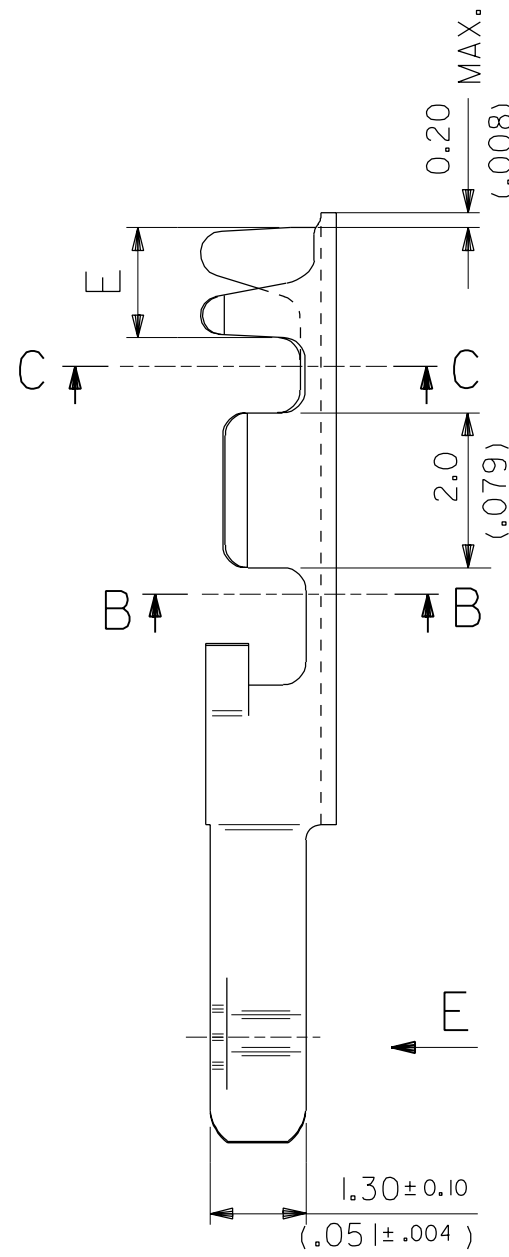


- NOTES :
- MATERIAL : PHOSPHOR BRONZE CuSn6 FB370 (DIN 1777), THICKNESS : (.020) / .008 REF.
 - FOR UNSTATED DIMENSIONS AND PLATING DETAILS, SEE SHEET 2.
 - FOR PART NUMBERS, SEE SHEET 2.
 - FOR WIRE SIZE AND INSULATION DIAMETER, SEE SHEET 2.
 - PRODUCT SPECIFICATION No : PS-99020-0026
CRIMP SPECIFICATION No : AS-90670



ECN 2588 sheet 2 97-09-15 Er	REVISIONS FOR PREVIOUS REVISIONS SEE MRL LIST	UNLESS OTHERWISE SPECIFIED TOLERANCES: ANGULAR ± 2°		DRWG BY POB	SIGN
		3 PLACE ± .	±		
		2 PLACE ± .	± 0.15	CHK'D BY KN	SIGN
		1 PLACE ±	± 0.20	APP'D BY JB	SIGN
		DRAFT WHERE APPLICABLE MUST REMAIN WITHIN DIMENSIONS		SCALE	10:1
		DESIGN DIMENSION	<input checked="" type="checkbox"/> MM <input type="checkbox"/> IN.		
		EQUIVALENT DIMENSION	<input type="checkbox"/> MM <input checked="" type="checkbox"/> IN.		
		IF TWO DIMENSIONS ARE SHOWN THE UPPER IS THE DESIGN DIMENSION, LOWER IS SECONDARY			

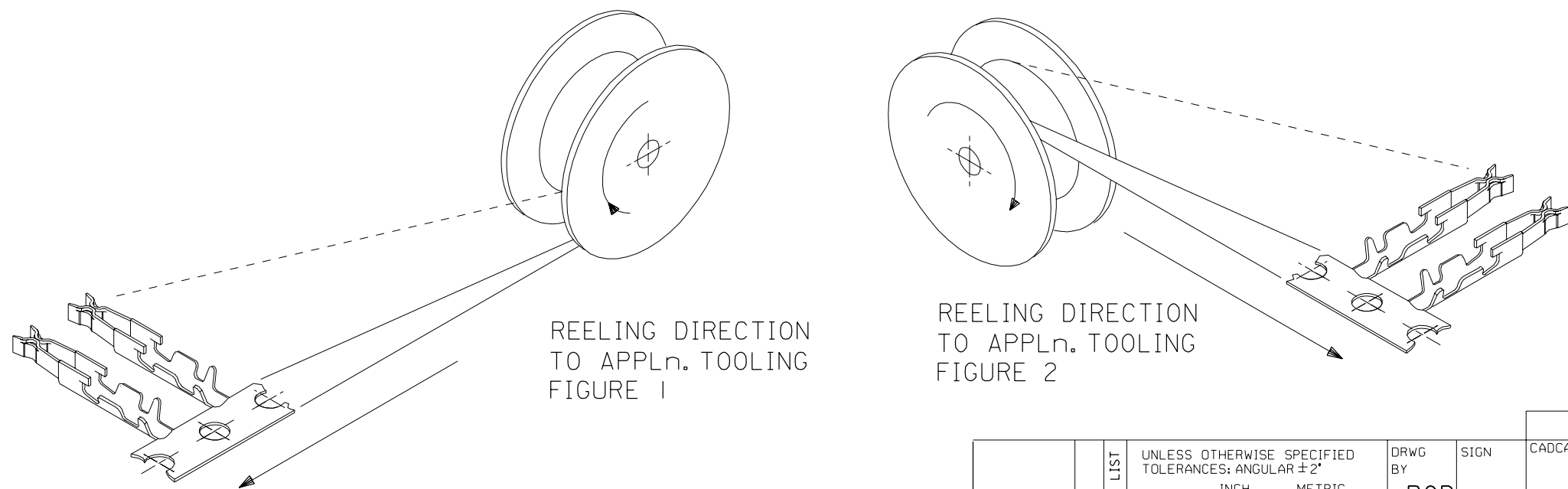
REVISE ONLY ON CAD SYSTEM			
CAD/CAM PROJECT NAME S90670X1 DCN	THIS DRAWING CONTAINS INFORMATION THAT IS PROPRIETARY TO MOLEX INC. & SHOULD NOT BE USED WITHOUT WRITTEN PERMISSION		
TITLE CRIMP CONTACT			
MOLEX MOLEX EUROPE		SHEET NO. 10F2	DATE 9/1/05/30
PART NO. SEE CHART	DWG NO. SD-90670	SIZE B	

2	E2
1	E2
	SH.
	REV.

PART No	WIRE SIZE			INSULATION RANGE	CRIMP DIMENSIONS								CONT.per REEL REELING DIRECTION FIGURE
	STRANDED WIRE CROSS SECTIONS (mm ²)	SOLID WIRE DIAMETER (mm)	(AWG)		WIRE BARREL			INSULATION BARREL					
					A REF.	B ± 0.10 (.004)	G ± 0.10 (.004)	C REF.	D ± 0.10 (.004)	F ± 0.10 (.004)	E ± 0.15 (.006)		
90670-1003 (C17)	0.05 - 0.18	0.25 - 0.4	26-30	0.60-1.10 (.024-.043)	1.50 (.059)	1.50 (.059)	0.30 (.012)	1.80 (.071)	1.80 (.071)	0.40 (.016)	1.50 (.059)	20 000 2	
90670-2003 (C16)	0.12 - 0.35	0.45 - 0.6	22-26	0.90-1.80 (.035-.071)	1.90 (.075)	1.70 (.067)	0.40 (.016)	2.80 (.110)	2.50 (.098)	0.80 (.031)	1.60 (.063)	15 000 2	
90670-1013 (C17)	0.05 - 0.18	0.25 - 0.4	26-30	0.60-1.10 (.024-.043)	1.50 (.059)	1.50 (.059)	0.30 (.012)	1.80 (.071)	1.80 (.071)	0.40 (.016)	1.50 (.059)	20 000 1	
90670-2013 (C16)	0.12 - 0.35	0.45 - 0.6	22-26	0.90-1.80 (.035-.071)	1.90 (.075)	1.70 (.067)	0.40 (.016)	2.80 (.110)	2.50 (.098)	0.80 (.031)	1.60 (.063)	15 000 1	
90670-3003 (C35)	0.034		32	0.48-0.62 (.019-.024)	1.50 (.059)	1.50 (.059)	0.30 (.012)	1.20 (.047)	1.05 (.041)	0.25 (.010)	1.50 (.059)	20 000 2	
90670-3013 (C35)	0.034		32	0.48-0.62 (.019-.024)	1.50 (.059)	1.50 (.059)	0.30 (.012)	1.20 (.047)	1.05 (.041)	0.25 (.010)	1.50 (.059)	20 000 1	

PLATING

1.5um/(59uin.) MIN. NICKEL ALL OVER.
0.1um/(4uin.) MIN. GOLD FLASH OVER 1.5 um/(59uin.) MIN. Pd-Ni 80/20 ALLOY IN CONTACT AREA.
0.1um/(4uin.) MIN. GOLD FLASH ON WIRE CRIMP AREA (outer side of the barrel).



ECN 2588 P/N 90670-3013 97-09-15 Er		REVISIONS FOR PREVIOUS REVISIONS SEE MRI LIST	UNLESS OTHERWISE SPECIFIED TOLERANCES: ANGULAR ± 2°		DRWG BY	SIGN	REVISE ONLY ON CAD SYSTEM		SH.	REV.	
3 PLACE ± .			INCH METRIC		POB		CADCAM PROJECT NAME S90670X2 DCN		THIS DRAWING CONTAINS INFORMATION THAT IS PROPRIETARY TO MOLEX INC. & SHOULD NOT BE USED WITHOUT WRITTEN PERMISSION		
2 PLACE ± .				CHK'D BY	SIGN	TITLE CRIMP CONTACT					
1 PLACE ±				KN		Molex MOLEX EUROPE					
DRAFT WHERE APPLICABLE MUST REMAIN WITHIN DIMENSIONS				APP'D BY	SIGN	SHEET NO. DATE		20F2 91/05/30			
DESIGN DIMENSION <input checked="" type="checkbox"/> MM <input type="checkbox"/> IN.				JB		PART NO.		DWG NO.		SIZE	
EQUIVALENT DIMENSION <input type="checkbox"/> MM <input checked="" type="checkbox"/> IN.				SCALE	---		SEE CHART		SD-90670 B		
IF TWO DIMENSIONS ARE SHOWN THE UPPER IS THE DESIGN DIMENSION, LOWER IS SECONDARY											