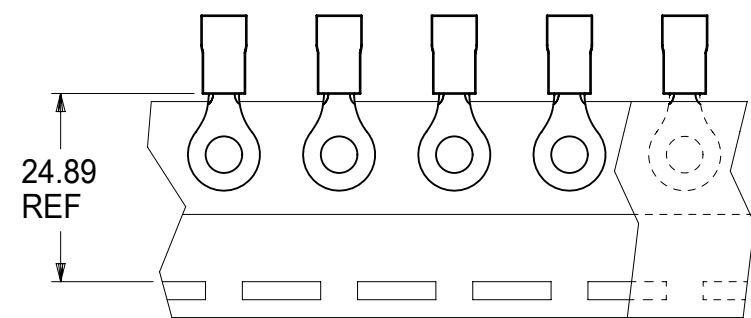
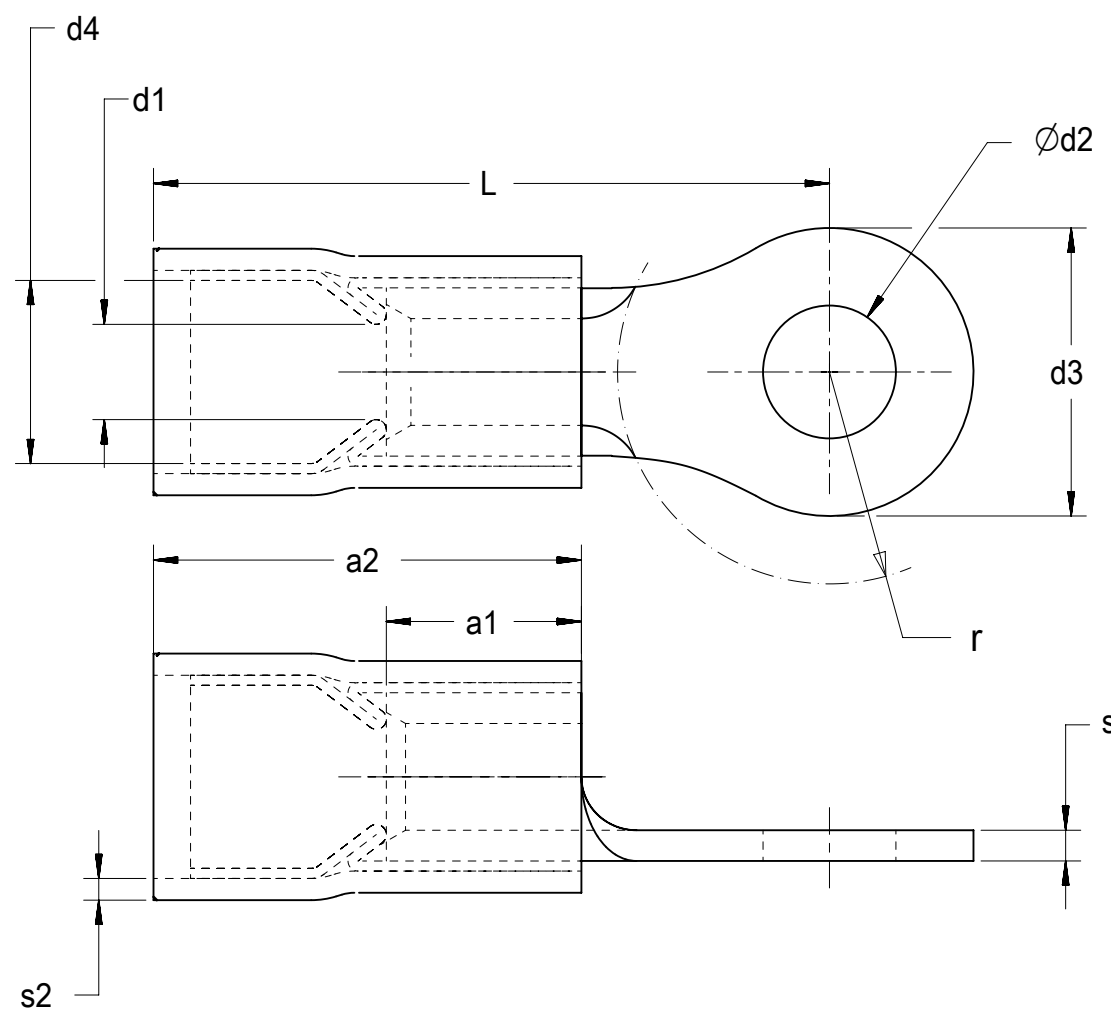


10	9	8	7	6	5	4						3		2	1	
						DIMENSIONS						L MAX	r MIN			s1 NOM
MATERIAL NUMBER	ENGINEERING PART NUMBER	MATERIAL NUMBER TAPED MOUNTED	ENGINEERING TAPE NUMBER	NOM WIRE SIZE AND RANGE (MM <sup>2</sup> )	NOM BOLT SIZE (MM)	INSULATION COLOR (REF)	a1 MIN	a2 ±1,0	d1 MIN	d2 ±0,7	d3 ±0,25			d4 +0,5/-0		
193240001	AA1-832-M2,5	193240020	AA1-832-M2,5T	1 (0,5 - 1)	2,5	RED	4,25	10,0	1,6	2,77	6,45	3,2	17,3	4	0,71	0,4
193240002	AA1-832-M3	193240022	AA1-832-M3T	1 (0,5 - 1)	3		4,25	10,0	1,6	3,29	6,45	3,2	17,3	4,5	0,71	0,4
193240003	AA1-832-M3,5	193240024	AA1-832-M3,5T	1 (0,5 - 1)	3,5		4,25	10,0	1,6	3,79	6,4	3,2	17,3	4,5	0,71	0,4
193240004	AA1-821-M4	193240026	AA1-821-M4T	1 (0,5 - 1)	4		4,25	10,0	1,6	4,39	7,92	3,2	18,1	6	0,71	0,4
193240005	AA1-822-M5	193240028	AA1-822-M5T	1 (0,5 - 1)	5	BLUE	4,25	10,0	1,6	5,39	11,86	3,2	21,0	6,5	0,71	0,4
193240006	BB2,5-823-M3	193240030	BB2,5-823-M3T	2,5 (1 - 2,5)	3		4,25	10,5	2,1	3,29	6,35	4,1	16,8	4,5	0,79	0,4
193240007	BB2,5-823-M3,5	193240032	BB2,5-823-M3,5T	2,5 (1 - 2,5)	3,5		4,25	10,5	2,1	3,79	6,35	4,1	16,8	4,5	0,79	0,4
193240008	BB2,5-837-M4	193240034	BB2,5-837-M4T	2,5 (1 - 2,5)	4		4,25	10,5	2,1	4,39	7,92	4,1	18,5	6	0,79	0,4
193240009	BB2,5-839-M5	193240036	BB2,5-839-M5T	2,5 (1 - 2,5)	5	YELLOW	4,25	10,5	2,1	5,39	8,69	4,1	19,2	6,5	0,79	0,4
193240010	BB2,5-825-M6	193240040	BB2,5-825-M6T	2,5 (1 - 2,5)	6		4,25	10,5	2,1	6,61	11,86	4,1	21,3	7,5	0,79	0,4
193240011	BB2,5-818-M8	193240038	BB2,5-818-M8T	2,5 (1 - 2,5)	8		4,25	10,5	2,1	8,51	13,56	4,1	25,1	10	0,79	0,4
193240012	C6-836-M4	193240042	C6-836-M4T	6 (2,5 - 6)	4		6,0	14,0	3,3	4,39	7,16	5,6	23,1	6	1,02	0,5
193240013	C6-828-M5	193240018	C6-828-M5T	6 (2,5 - 6)	5	YELLOW	6,0	14,0	3,3	5,39	9,53	5,6	23	6,5	1,02	0,5
193240014	C6-830-M6	193240044	C6-830-M6T	6 (2,5 - 6)	6		6,0	14,0	3,3	6,61	13,46	5,6	25,3	7,5	1,02	0,5
193240015	C6-830-M8	193240046	C6-830-M8T	6 (2,5 - 6)	8		6,0	14,0	3,3	8,51	13,46	5,6	25,3	10	1,02	0,5
193240016	C6-840-M10	193240048	C6-840-M10T	6 (2,5 - 6)	10		6,0	14,0	3,3	10,63	14,94	5,6	27,1	12	1,02	0,5



PARTS ON TAPE

NOTES:  
 1. MATERIALS  
 TERMINAL: TIN-PLATED COPPER.  
 STRAIN-RELIEF FERRULE: TIN-PLATED COPPER ALLOY  
 INSULATION: NYLON (SEE CHART FOR COLOR)  
 2. PARTS ARE RoHS COMPLIANT.

THIS DRAWING CONTAINS INFORMATION THAT IS PROPRIETARY TO MOLEX ELECTRONIC TECHNOLOGIES, LLC AND SHOULD NOT BE USED WITHOUT WRITTEN PERMISSION											
DIMENSION UNITS		SCALE		CURRENT REV DESC: NEW TAPE PN ADDED							
MM		1:1		<b>molex</b> METRIC RING TERMINALS AVIKRIMP 0,5 - 6 MM <sup>2</sup> PRODUCT CUSTOMER DRAWING DOCUMENT NUMBER: SD-19324-001   DOC TYPE: PSD   DOC PART: 001   REVISION: A EC NO: 602131   DRWN: GROJAS01   2018/05/22 CHK'D: JMACNEIL   2018/07/30 APPR: JMACNEIL   2018/07/30 INITIAL REVISION: DRWN: ETHRODAHL   2012/07/17 APPR: JMACNEIL   2012/12/11 MATERIAL NUMBER: SEE CHART   CUSTOMER: GENERAL MARKET   SHEET NUMBER: 1 OF 1							
GENERAL TOLERANCES (UNLESS SPECIFIED)											
		MM	INCH								
4 PLACES	±		±								
3 PLACES	±		±								
2 PLACES	±	0.05	±								
1 PLACE	±	0.1	±								
0 PLACES	±		±								
ANGULAR TOL		± °									
DRAFT WHERE APPLICABLE MUST REMAIN WITHIN DIMENSIONS				THIRD ANGLE PROJECTION		DRAWING		SERIES		MATERIAL NUMBER	
				B-SIZE		19324		SEE CHART		GENERAL MARKET	

DOCUMENT STATUS	P1	RELEASE DATE	2018/07/30	23:36:26
-----------------	----	--------------	------------	----------